

PRODUCT INFORMATION PACKET



Model No: 199978.00

Catalog No: 199978.00

Obsolete Replaced by B199978.00..20HP..1800RPM.256JM.TEFC.230/460V.3PH.60HZ.CONT.40C..RIGID C FACE.
.....JM PUMP.....



Regal and Leeson are trademarks of Regal Rexnord Corporation or one of its affiliated companies.

©2023 Regal Rexnord Corporation, All Rights Reserved. MC017097E





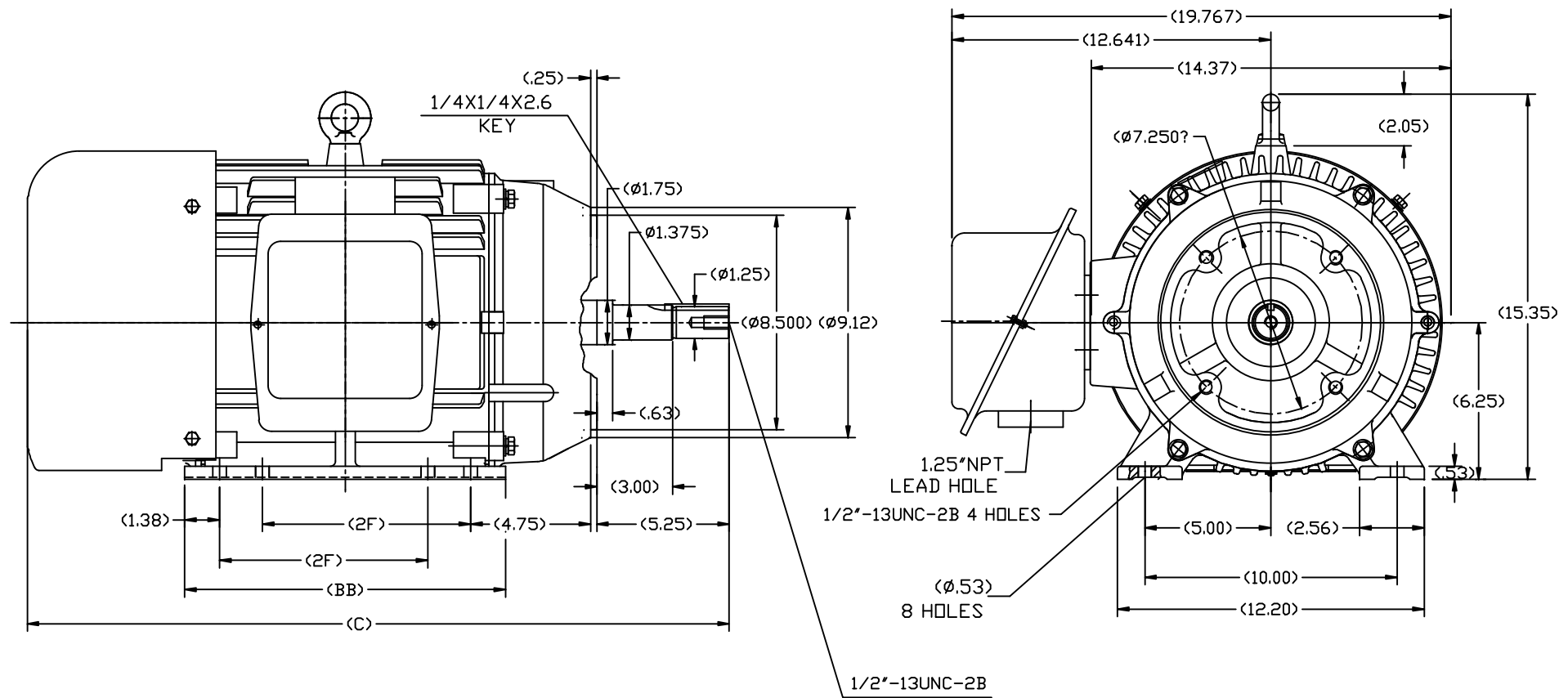
Nameplate Specifications

| | | | |
|------------------------|-------------------|----------------------------|-----------------------------|
| Phase | 3 | Output HP | 20 & 15 Hp |
| Output KW | 14.9 & 11.2 kW | Voltage | 230/460 & 190/380 V |
| Speed | 1773 & 1475 rpm | Service Factor | 1.15 & 1.15 |
| Frame | 256JM | Enclosure | Totally Enclosed Fan Cooled |
| Thermal Protection | No Protection | Efficiency | 93 & 92.4 % |
| Ambient Temperature | 40 °C | Frequency | 60 & 50 Hz |
| Current | 48/24 & 44/22.1 A | Power Factor | 82 |
| Duty | Continuous | Insulation Class | F |
| Design Code | B | KVA Code | G |
| Drive End Bearing Size | 6309 | Opp Drive End Bearing Size | 6209 |
| UL | Recognized | CSA | Y |
| CE | Y | IP Code | 43 |
| Number of Speeds | 1 | | |

Technical Specifications

| | | | |
|-----------------------|------------------------------|-----------------------|------------------|
| Electrical Type | Squirrel Cage Inverter Rated | Starting Method | Line Or Inverter |
| Poles | 4 | Rotation | Reversible |
| Resistance Main | .455 Ohms | Mounting | Rigid Base |
| Motor Orientation | Horizontal | Drive End Bearing | Ball |
| Opp Drive End Bearing | Ball | Frame Material | Cast Iron |
| Shaft Type | JM | Assembly/Box Mounting | F1/F2 CAPABLE |
| Inverter Load | VARIABLE 10:1 | | |
| Outline Drawing | SS620564-256 | Connection Drawing | EE7308K_LE |

This is an uncontrolled document once printed or downloaded and is subject to change without notice. Date Created:06/22/2023




| | | | |
|-------|-------|-------|-------|
| 254 | 26.60 | 12.80 | 8.25 |
| 256 | 27.80 | 13.98 | 10.00 |
| FRAME | C | BB | 2F |

| | | TOLERANCES UNLESS SPECIFIED | | REGAL-BELOIT CORPORATION | | DRAWN L.S.J 05-16-2012 | |
|-----|----------|--------------------------------|--------|--------------------------|------|------------------------|-------------|
| | | DEC. | INCHES | | | CHK | |
| | | .X | ±.1 | | | APPD | |
| | | .XX | ±.03 | | | SCALE | 1=4 |
| | | .XXX | ±.005 | | | REF | |
| | | .XXXX | ±.0005 | | | FMF | HWADA |
| | | | | | | PREV | |
| NO. | REVISION | BY & DATE | CHK | ANG | ±1/2 | FINISH | |
| | | | | RFP | | CAD FILE | SS620564 |
| | | | | DIST | | SIZE | DRAWING NO. |
| | | | | | | B | SS620564 |
| | | | | | | REV. | |

THIS DRAWING IN DESIGN AND DETAIL IS OUR PROPERTY AND MUST NOT BE USED EXCEPT IN CONNECTION WITH OUR WORK. ALL RIGHTS OF DESIGN AND INVENTION ARE RESERVED. THIS IS AN ELECTRONICALLY GENERATED DOCUMENT - DO NOT SCALE THIS PRINT.

LOW VOLTAGEHIGH VOLTAGE

VIEW OF TERMINAL END

| | | | | TOLERANCES UNLESS SPECIFIED | |  ELECTRIC MOTORS GEARMOTORS AND DRIVES | DRAWN KJC 01-27-2003 | | | |
|--|---------------------|----------------|-----|--------------------------------|---------------------|--|----------------------|-------------|------|----|
| | | | | DEC. | INCHES | | CHK ML 01-28-2003 | | | |
| | | | | .X | ±.1 | | APPD TB 01-28-2003 | | | |
| | | | | .XX | ±.02 | TITLE CONNECTION DIAGRAM DELTA CONN. - 3Ø - 9 LEADS | SCALE 1.5=1 | | | |
| | | | | .XXX | ±.005 | | REF | | | |
| 01 | NEW DRAWING CN36099 | KJC 01-28-2003 | TB | .XXXX | ±.0005 | MAT'L. | FMF | | | |
| NO. | REVISION | BY & DATE | CHK | ANG | ±7'30" | FINISH | PREV | | | |
| THIS DRAWING IN DESIGN AND DETAIL IS OUR PROPERTY AND MUST NOT BE USED EXCEPT IN CONNECTION WITH OUR WORK ALL RIGHTS OF DESIGN AND INVENTION ARE RESERVED THIS IS AN ELECTRONICALLY GENERATED DOCUMENT - DO NOT SCALE THIS PRINT | | | | RFP | CAD FILE EE7308K-LE | | SIZE | DRAWING NO. | PAGE | OF |
| | | | | DIST WP | | | A | EE7308K-LE | | 01 |



CERTIFICATION DATA SHEET

1051 CHEYENNE AVE.
GRAFTON, WI 53024
PH. 262-377-8810

CONN. DIAGRAM: EE7308K_LE

CATALOG #: 199978.00

OUTLINE: SS620564

MOUNTING: F1/F2 CAPABLE

WINDING #: CHT25640006 1

TYPICAL MOTOR PERFORMANCE DATA

| HP | kW | SYNC. RPM | F.L. RPM | FRAME | ENCLOSURE | KVA CODE | DESIGN |
|-------|-----------|-----------|-----------|-------|-----------|----------|--------|
| 20&15 | 14.9&11.2 | 1800 | 1773&1475 | 256JM | TEFC | G | B |

| PH | Hz | VOLTS | AMPS | START TYPE | DUTY | INSL | S.F. | AMB°C |
|----|-------|-----------------|---------------|------------------|------------|------|-----------|-------|
| 3 | 60/50 | 230/460&190/380 | 48/24&44/22.1 | LINE OR INVERTER | CONTINUOUS | F3 | 1.15/1.15 | 40 |

| | | | | | | | |
|----------------|---------|---------------|------|---------------|------|----------|-------------------|
| FULL LOAD EFF: | 93&92.4 | 3/4 LOAD EFF: | 93 | 1/2 LOAD EFF: | 91.7 | GTD. EFF | ELEC. TYPE |
| FULL LOAD PF: | 82&81.5 | 3/4 LOAD PF: | 77.5 | 1/2 LOAD PF: | 67 | 92.4 | SQ CAGE INV RATED |

| F.L. TORQUE | LOCKED ROTOR AMPS | L.R. TORQUE | B.D. TORQUE | F.L. RISE°C |
|-------------|-------------------|-----------------|-----------------|-------------|
| 59.2 LB-FT | 280 / 140 | 120 LB-FT 202 % | 165 LB-FT 278 % | 45 |

| SOUND PRESSURE @ 3 FT. | SOUND POWER | ROTOR WK^2 | MAX. WK^2 | SAFE STALL TIME | STARTS / HOUR | APPROX. MOTOR WGT |
|------------------------|-------------|------------|-------------|-----------------|---------------|-------------------|
| 74 dBA | 84 dBA | 3 LB-FT^2 | 125 LB-FT^2 | 20 SEC. | 2 | 325 LBS. |

*** SUPPLEMENTAL INFORMATION ***

| DE BRACKET TYPE | ODE BRACKET TYPE | MOUNT TYPE | ORIENTATION | SEVERE DUTY | HAZARDOUS LOCATION | DRIP COVER | SCREENS | PAINT |
|-----------------|------------------|------------|-------------|-------------|--------------------|------------|---------|------------------------|
| C-FACE | STANDARD | RIGID | HORIZONTAL | FALSE | NONE | FALSE | NONE | BLUE - LEESON (ENAMEL) |

| BEARINGS | | GREASE | SHAFT TYPE | SPECIAL DE | SPECIAL ODE | SHAFT MATERIAL | FRAME MATERIAL |
|----------|------|------------|------------|------------|-------------|-------------------------|----------------|
| DE | ODE | | | | | | |
| BALL | BALL | POLYREX EM | JM | NONE | NONE | 1045 HOT ROLLED (C-204) | CAST IRON |
| 6309 | 6209 | | | | | | |

| THERMO-PROTECTORS | | | | THERMISTORS | CONTROL | SPACE HEATERS |
|-------------------|------------|----------|----------|-------------|---------|---------------|
| THERMOSTATS | PROTECTORS | WDG RTDs | BRG RTDs | | | |
| NONE | NOT | NONE | NONE | NONE | FALSE | NONE VOLTS |

*

N

O

T

E

S

INVERTER TORQUE: VARIABLE 10:1

INV. HP SPEED RANGE: NONE

ENCODER: NONE

NONE NONE

NONE NONE PPR

BRAKE: NONE NONE

NONE P/N NONE

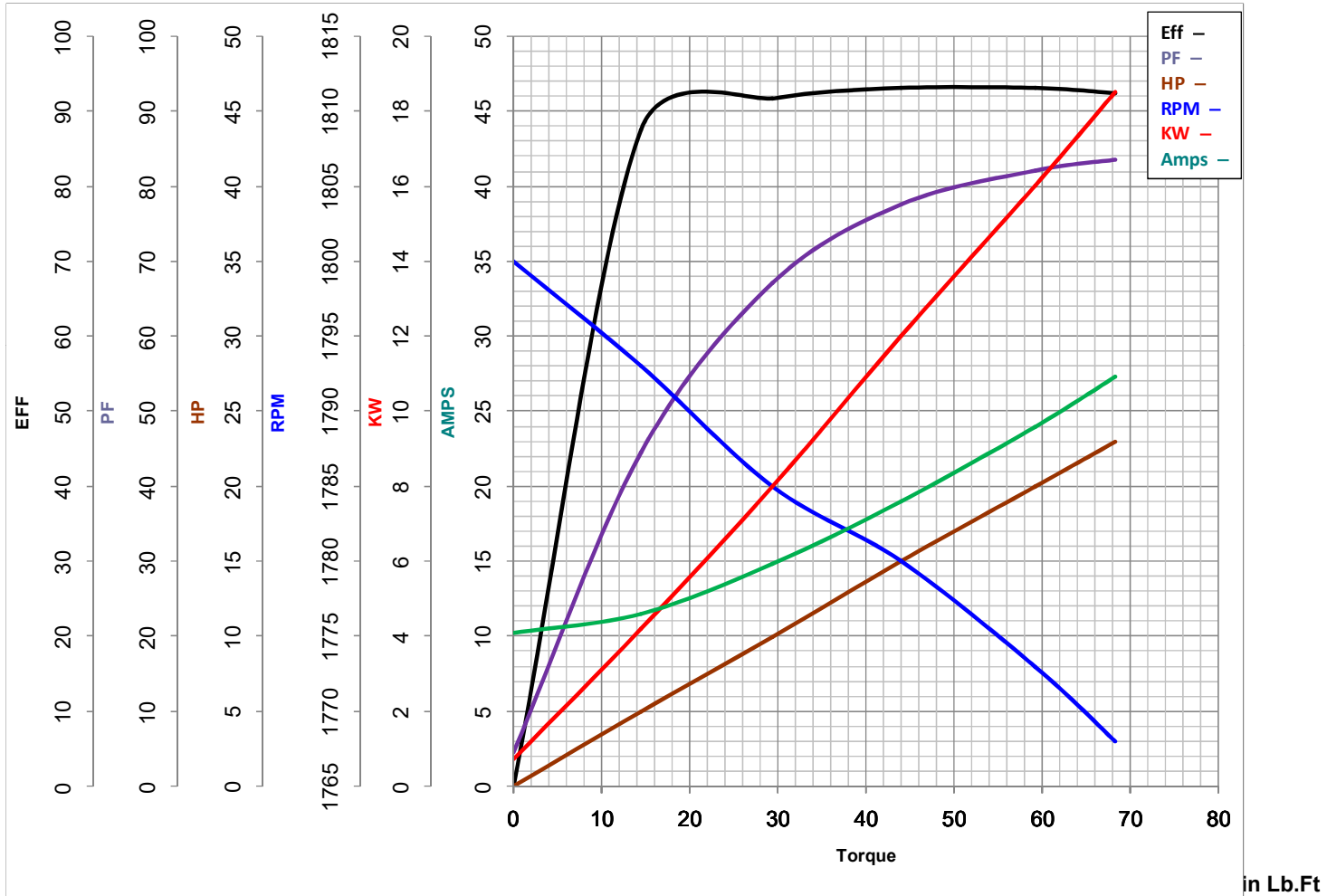
NONE NONE

FT-LB NONE V NONE Hz



LEESON ELECTRIC CORPORATION

TYPICAL PERFORMANCE CURVE for AC MOTOR

Model No 199978.00Curve at 460
60
20Volts
HZ
HPHP 20&15PHASE 3VOLTS 230/460&190/380Catalog No 199978.00HZ 60&50RPM 1773&1475

FL TORQUE 59.2 Lb.Ft
 BD TORQUE 165.0 Lb.Ft
 LR TORQUE 120 Lb.Ft

FL AMPS 48/24
 PU TORQUE 108.0 Lb.Ft
 LR AMPS 140

WINDING CHT25640006-1

Date 10/29/2018