

# PRODUCT INFORMATION PACKET



Model No: 199785.00

Catalog No: 199785.00

Obsolete Replaced by B199785.00..10..1800.215JP.ODP.230/460.3.60/50HZ.CONT.40C..RIGID C-FACE.....

.....



Regal and Leeson are trademarks of Regal Rexnord Corporation or one of its affiliated companies.

©2023 Regal Rexnord Corporation, All Rights Reserved. MC017097E





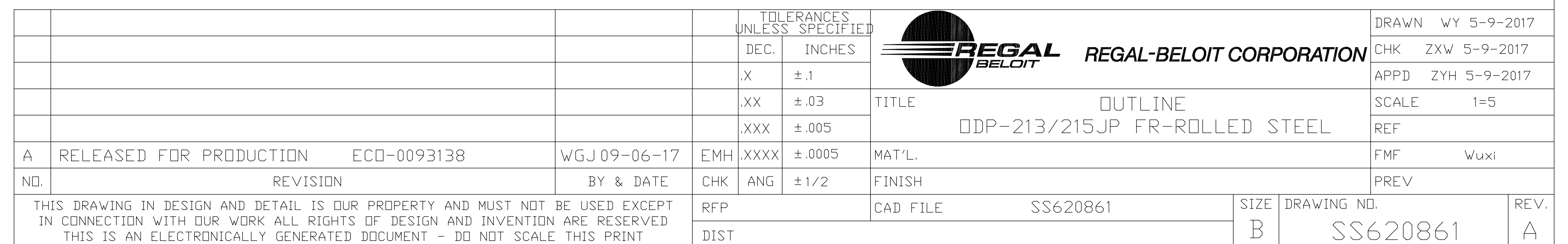
### Nameplate Specifications

|                        |                     |                            |                     |
|------------------------|---------------------|----------------------------|---------------------|
| Phase                  | 3                   | Output HP                  | 10 & 7.50 Hp        |
| Output KW              | 7.5 & 5.6 kW        | Voltage                    | 230/460 & 190/380 V |
| Speed                  | 1770 & 1475 rpm     | Service Factor             | 1.15 & 1.15         |
| Frame                  | 215JP               | Enclosure                  | Drip Proof          |
| Thermal Protection     | No Protection       | Efficiency                 | 91.7 & 91.7 %       |
| Ambient Temperature    | 40 °C               | Frequency                  | 60 & 50 Hz          |
| Current                | 25.6/12.8 & 24/12 A | Power Factor               | 79                  |
| Duty                   | Continuous          | Insulation Class           | F                   |
| Design Code            | B                   | KVA Code                   | G                   |
| Drive End Bearing Size | 6309                | Opp Drive End Bearing Size | 6206                |
| UL                     | Recognized          | CSA                        | Y                   |
| CE                     | Y                   | IP Code                    | 22                  |
| Number of Speeds       | 1                   |                            |                     |

### Technical Specifications

|                       |                              |                       |                  |
|-----------------------|------------------------------|-----------------------|------------------|
| Electrical Type       | Squirrel Cage Inverter Rated | Starting Method       | Line Or Inverter |
| Poles                 | 4                            | Rotation              | Reversible       |
| Resistance Main       | .805 Ohms                    | Mounting              | Rigid Base       |
| Motor Orientation     | Horizontal                   | Drive End Bearing     | Ball             |
| Opp Drive End Bearing | Ball                         | Frame Material        | Rolled Steel     |
| Shaft Type            | JP                           | Assembly/Box Mounting | F1/F2 CAPABLE    |
| Inverter Load         | VARIABLE 10:1                |                       |                  |
| Outline Drawing       | SS620861                     | Connection Drawing    | EE7308_LE        |

This is an uncontrolled document once printed or downloaded and is subject to change without notice. Date Created:06/22/2023

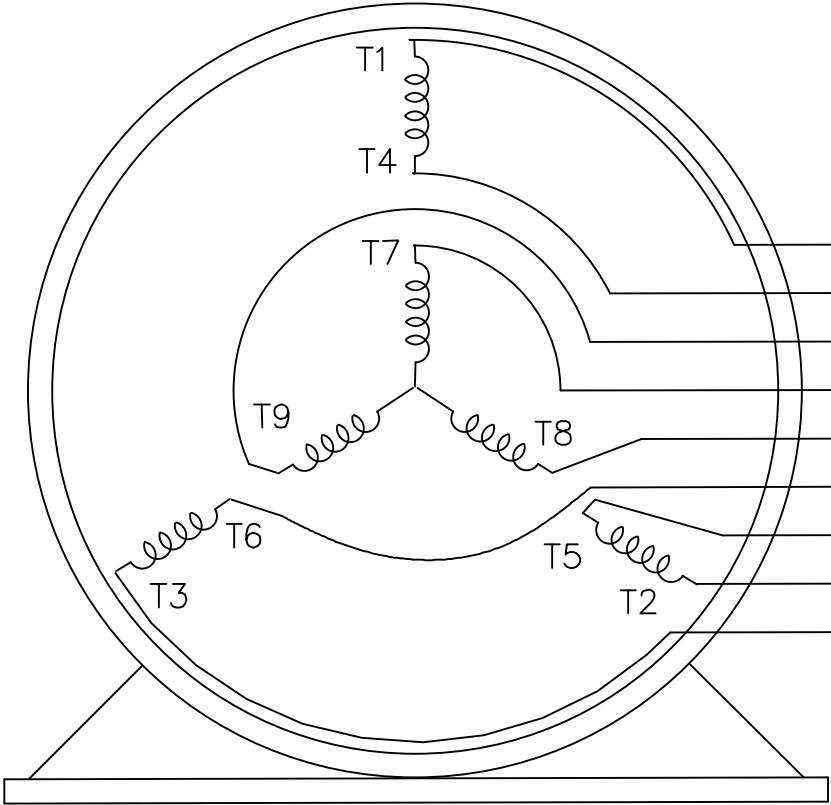


THREE PHASE  
DUAL VOLTAGE MOTOR

HIGH VOLTAGE



LOW VOLTAGE




T1 (U1)  
T4 (U2)  
T9 (W3)  
T7 (U3)  
T8 (V3)  
T6 (W2)  
T5 (V2)  
T2 (V1)  
T3 (W1)

VIEW OF TERMINAL END

REF.  
WINDING DIAGRAM

T8Y, T2Y, T2BL, T4BX, T2EC, T2G  
T6BZ, T2B, T6BL, T4AV, T6B, T4B

|  |   |                |            |                                |                    |   |   |      |             |   |    |            |       |     |            |
|--|---|----------------|------------|--------------------------------|--------------------|---|---|------|-------------|---|----|------------|-------|-----|------------|
|  |   |                |            | TOLERANCES<br>UNLESS SPECIFIED |                    |  | ELECTRIC MOTORS<br>GEARMOTORS<br>AND DRIVES |      |             | DRAWN HLB 04-29-2002                                |    |            |       |     |            |
|  |   |                |            | DEC.                           | INCHES             |   |   |      |             | CHK   | ML | 05-03-2002 |       |     |            |
|  |   |                |            | .X                             | ±.1                |   |   |      |             | TITLE CONNECTION DIAGRAM<br>3Ø - DUAL VOLTAGE MOTOR |    |            | APPD  | GK  | 05-03-2002 |
|  |   |                |            | .XX                            | ±.01               |   |   |      |             |   |    |            | SCALE | 1=1 |            |
| 2  | ADDED IEC NOTATIONS... (U1), (V1) ETC. (MU105786) | REP 01-11-2012 | DR         | .XXX                           | ±.005              | MAT'L.  |   |      | REF         |   |    |            |       |     |            |
| 1  | NEW DRAWING                                       | HLB 05-03-2002 | ML         | .XXXX                          | ±.0005             |   |   |      | FMF         |   |    |            |       |     |            |
| NO.  | REVISION  | BY & DATE      | CHK        | ANG                            | ±1/2'              | FINISH  |   |      | PREV        |   |    |            |       |     |            |
| THIS DRAWING IN DESIGN AND DETAIL IS OUR PROPERTY AND MUST NOT BE USED EXCEPT<br>IN CONNECTION WITH OUR WORK ALL RIGHTS OF DESIGN AND INVENTION ARE RESERVED<br>THIS IS AN ELECTRONICALLY GENERATED DOCUMENT - DO NOT SCALE THIS PRINT |   |                | RFP        |                                | CAD FILE EE7308-LE |   |   | SIZE | DRAWING NO. | PAGE  | OF | REV.       |       |     |            |
|  |   |                | DIST LB-WP |                                |                    |   |   | A    | EE7308-LE   |   |    | 2          |       |     |            |



# CERTIFICATION DATA SHEET

**1051 CHEYENNE AVE.  
GRAFTON, WI 53024  
PH. 262-377-8810**

**CONN. DIAGRAM:** EE7308\_LE

**CATALOG #:** 199785.00

**OUTLINE:** SS620861

**MOUNTING:** F1/F2 CAPABLE

**WINDING #:** CHT21540008 1

## TYPICAL MOTOR PERFORMANCE DATA

| HP       | kW        | SYNC. RPM | F.L. RPM  | FRAME | ENCLOSURE | KVA CODE | DESIGN |
|----------|-----------|-----------|-----------|-------|-----------|----------|--------|
| 10&7 1/2 | 7.50&5.60 | 1800      | 1770&1475 | 215JP | DP        | G        | B      |

| PH | Hz    | VOLTS           | AMPS            | START TYPE       | DUTY       | INSL | S.F.      | AMB°C |
|----|-------|-----------------|-----------------|------------------|------------|------|-----------|-------|
| 3  | 60/50 | 230/460&190/380 | 25.6/12.8&24/12 | LINE OR INVERTER | CONTINUOUS | F5   | 1.15/1.15 | 40    |

|                       |           |                      |      |                      |      |                 |  |                   |
|-----------------------|-----------|----------------------|------|----------------------|------|-----------------|--|-------------------|
| <b>FULL LOAD EFF:</b> | 91.7&91.7 | <b>3/4 LOAD EFF:</b> | 91.7 | <b>1/2 LOAD EFF:</b> | 91   | <b>GTD. EFF</b> |  | <b>ELEC. TYPE</b> |
| <b>FULL LOAD PF:</b>  | 79&79     | <b>3/4 LOAD PF:</b>  | 76.5 | <b>1/2 LOAD PF:</b>  | 64.5 | 91              |  | SQ CAGE INV RATED |

| F.L. TORQUE | LOCKED ROTOR AMPS | L.R. TORQUE    | B.D. TORQUE    | F.L. RISE°C |
|-------------|-------------------|----------------|----------------|-------------|
| 29.7 LB-FT  | 162 / 81          | 50 LB-FT 168 % | 80 LB-FT 269 % | 55          |

| SOUND PRESSURE @ 3 FT. | SOUND POWER | ROTOR WK^2  | MAX. WK^2  | SAFE STALL TIME | STARTS / HOUR | APPROX. MOTOR WGT |
|------------------------|-------------|-------------|------------|-----------------|---------------|-------------------|
| 47 dBA                 | 57 dBA      | 0.9 LB-FT^2 | 79 LB-FT^2 | 15 SEC.         | 2             | 140 LBS.          |

## \*\*\* SUPPLEMENTAL INFORMATION \*\*\*

| DE BRACKET TYPE | ODE BRACKET TYPE | MOUNT TYPE | ORIENTATION | SEVERE DUTY | HAZARDOUS LOCATION | DRIP COVER | SCREENS | PAINT                  |
|-----------------|------------------|------------|-------------|-------------|--------------------|------------|---------|------------------------|
| C-FACE          | STANDARD         | RIGID      | HORIZONTAL  | FALSE       | NONE               | FALSE      | RODENT  | BLUE - LEESON (ENAMEL) |

| BEARINGS |      | GREASE     | SHAFT TYPE | SPECIAL DE | SPECIAL ODE | SHAFT MATERIAL          | FRAME MATERIAL |
|----------|------|------------|------------|------------|-------------|-------------------------|----------------|
| DE       | ODE  |            |            |            |             |                         |                |
| BALL     | BALL | POLYREX EM | JP         | NONE       | NONE        | 1045 HOT ROLLED (C-204) | ROLLED STEEL   |
| 6309     | 6206 |            |            |            |             |                         |                |

| THERMO-PROTECTORS |            |          |          | THERMISTORS | CONTROL | SPACE HEATERS |
|-------------------|------------|----------|----------|-------------|---------|---------------|
| THERMOSTATS       | PROTECTORS | WDG RTDs | BRG RTDs |             |         |               |
| NONE              | NOT        | NONE     | NONE     | NONE        | FALSE   | NONE VOLTS    |

\*

N

O

T

E

S

**INVERTER TORQUE:** VARIABLE 10:1

**INV. HP SPEED RANGE:** NONE

**ENCODER:** NONE

NONE NONE

NONE NONE PPR

**BRAKE:** NONE NONE

NONE P/N NONE

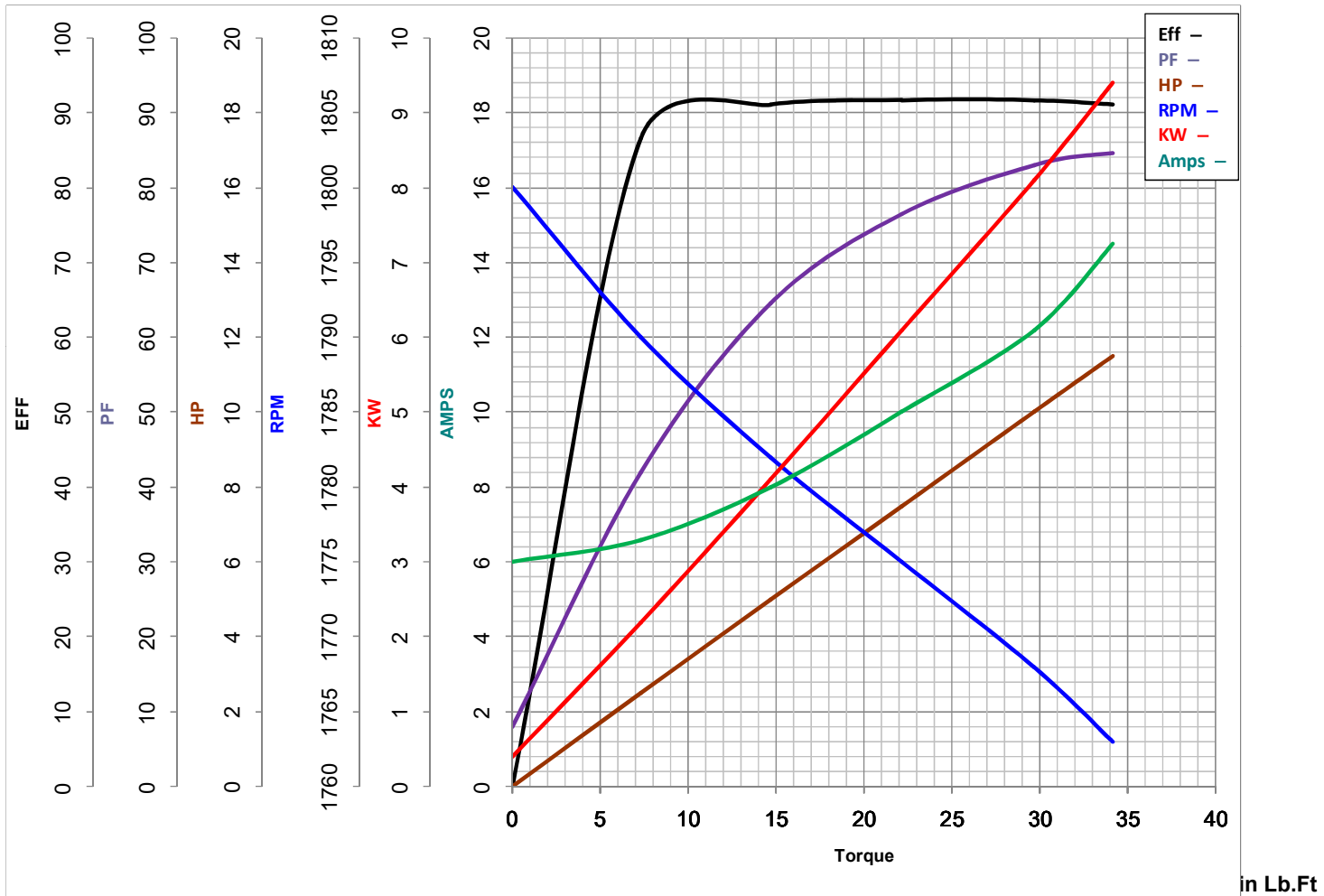
NONE NONE

NONE FT-LB NONE V NONE Hz



# LEESON ELECTRIC CORPORATION

## TYPICAL PERFORMANCE CURVE for AC MOTOR

Model No 199785.00Curve at 460  
60  
10Volts  
HZ  
HPHP 10&7.5PHASE 3VOLTS 230/460&190/380Catalog No 199785.00HZ 60&50RPM 1770&1475

FL TORQUE 29.7 Lb.Ft  
 BD TORQUE 80.0 Lb.Ft  
 LR TORQUE 50 Lb.Ft

FL AMPS 25.6/12.8  
 PU TORQUE 40.0 Lb.Ft  
 LR AMPS 81

WINDING CHT21540008-1

Date 10/26/2018