

PRODUCT INFORMATION PACKET



Model No: 199782.00

Catalog No: 199782.00

Obsolete Replaced by B199782.00..10HP..1800RPM.215JM.TEFC.230/460V.3PH.60HZ.CONT.40C..RIGID C FACE.
.....JM PUMP.....



Regal and Leeson are trademarks of Regal Rexnord Corporation or one of its affiliated companies.

©2023 Regal Rexnord Corporation, All Rights Reserved. MC017097E





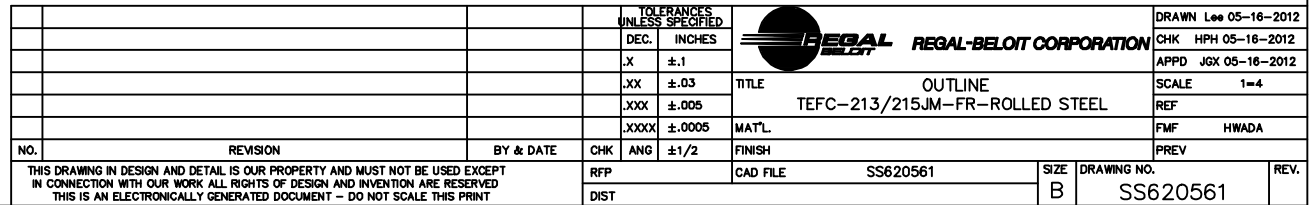
Nameplate Specifications

Phase	3	Output HP	10 & 7.50 Hp
Output KW	7.5 & 5.6 kW	Voltage	230/460 & 190/380 V
Speed	1768 & 1472 rpm	Service Factor	1.15 & 1.15
Frame	215JM	Enclosure	Totally Enclosed Fan Cooled
Thermal Protection	No Protection	Efficiency	91.7 & 91 %
Ambient Temperature	40 °C	Frequency	60 & 50 Hz
Current	24.4/12.2 & 24/12 A	Power Factor	84
Duty	Continuous	Insulation Class	F
Design Code	B	KVA Code	G
Drive End Bearing Size	6307	Opp Drive End Bearing Size	6206
UL	Recognized	CSA	Y
CE	Y	IP Code	43
Number of Speeds	1		

Technical Specifications

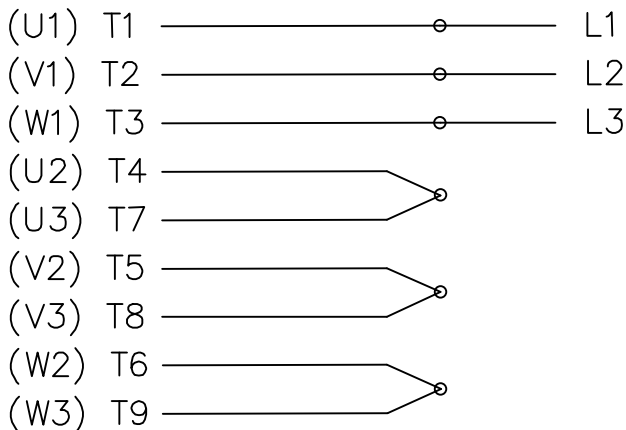
Electrical Type	Squirrel Cage Inverter Rated	Starting Method	Line Or Inverter
Poles	4	Rotation	Reversible
Resistance Main	.755 Ohms	Mounting	Rigid Base
Motor Orientation	Horizontal	Drive End Bearing	Ball
Opp Drive End Bearing	Ball	Frame Material	Rolled Steel
Shaft Type	JM	Assembly/Box Mounting	F1/F2 CAPABLE
Inverter Load	VARIABLE 10:1		
Outline Drawing	SS620561	Connection Drawing	EE7308_LE

This is an uncontrolled document once printed or downloaded and is subject to change without notice. Date Created:06/22/2023

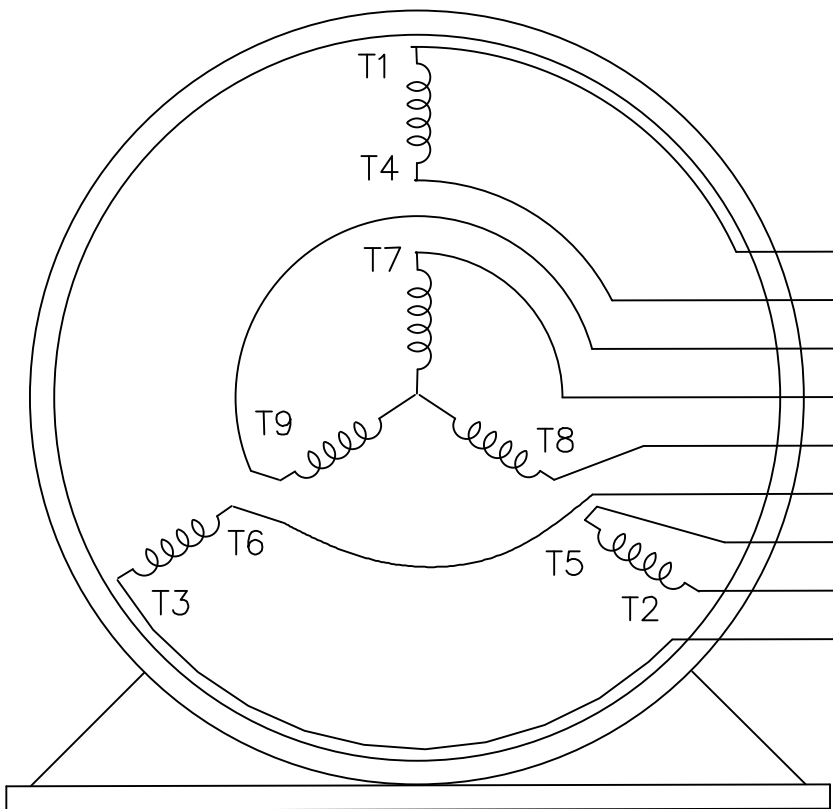
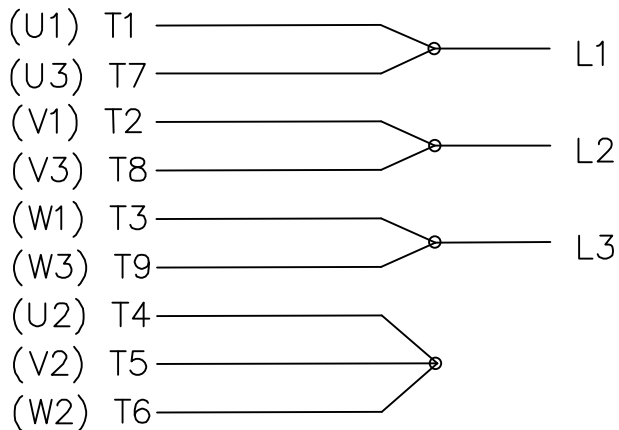


THREE PHASE DUAL VOLTAGE MOTOR

HIGH VOLTAGE



LOW VOLTAGE




VIEW OF TERMINAL END

T1 (U1)
 T4 (U2)
 T9 (W3)
 T7 (U3)
 T8 (V3)
 T6 (W2)
 T5 (V2)
 T2 (V1)
 T3 (W1)

REF.
WINDING DIAGRAM

T8Y, T2Y, T2BL, T4BX, T2EC, T2G
 T6BZ, T2B, T6BL, T4AV, T6B, T4B

				TOLERANCES UNLESS SPECIFIED		 ELECTRIC MOTORS GEARMOTORS AND DRIVES	DRAWN HLB 04-29-2002			
				DEC.	INCHES		CHK	ML	05-03-2002	
				.X	±.1	TITLE CONNECTION DIAGRAM 3Ø - DUAL VOLTAGE MOTOR	APPD	GK	05-03-2002	SCALE 1=1
				.XX	±.01					REF
2	ADDED IEC NOTATIONS... (U1), (V1) ETC. (MU105786)	REP 01-11-2012	DR	.XXX	±.005					FMF
1	NEW DRAWING	HLB 05-03-2002	ML	.XXXX	±.0005	MAT'L.				PREV
NO.	REVISION	BY & DATE	CHK	ANG	±1/2'	FINISH				
THIS DRAWING IN DESIGN AND DETAIL IS OUR PROPERTY AND MUST NOT BE USED EXCEPT IN CONNECTION WITH OUR WORK ALL RIGHTS OF DESIGN AND INVENTION ARE RESERVED THIS IS AN ELECTRONICALLY GENERATED DOCUMENT - DO NOT SCALE THIS PRINT				RFP		CAD FILE EE7308-LE	SIZE A	DRAWING NO.	PAGE OF	REV.
				DIST LB-WP				EE7308-LE		2



CERTIFICATION DATA SHEET

1051 CHEYENNE AVE.
GRAFTON, WI 53024
PH. 262-377-8810

CONN. DIAGRAM: EE7308_LE

CATALOG #: 199782.00

OUTLINE: SS620561

MOUNTING: F1/F2 CAPABLE

WINDING #: CHT21540007 1

TYPICAL MOTOR PERFORMANCE DATA

HP	kW	SYNC. RPM	F.L. RPM	FRAME	ENCLOSURE	KVA CODE	DESIGN
10&7 1/2	7.50&5.60	1800	1768&1472	215JM	TEFC	G	B

PH	Hz	VOLTS	AMPS	START TYPE	DUTY	INSL	S.F.	AMB°C
3	60/50	230/460&190/380	24.4/12.2&24/12	LINE OR INVERTER	CONTINUOUS	F3	1.15/1.15	40

FULL LOAD EFF:	91.7&91	3/4 LOAD EFF:	91.7	1/2 LOAD EFF:	91	GTD. EFF	ELEC. TYPE
FULL LOAD PF:	84&78	3/4 LOAD PF:	75	1/2 LOAD PF:	61	91	SQ CAGE INV RATED

F.L. TORQUE	LOCKED ROTOR AMPS	L.R. TORQUE	B.D. TORQUE	F.L. RISE°C
29.8 LB-FT	174 / 87	50 LB-FT 168 %	85 LB-FT 285 %	70

SOUND PRESSURE @ 3 FT.	SOUND POWER	ROTOR WK^2	MAX. WK^2	SAFE STALL TIME	STARTS / HOUR	APPROX. MOTOR WGT
62 dBA	72 dBA	1.2 LB-FT^2	85 LB-FT^2	25 SEC.	2	210 LBS.

*** SUPPLEMENTAL INFORMATION ***

DE BRACKET TYPE	ODE BRACKET TYPE	MOUNT TYPE	ORIENTATION	SEVERE DUTY	HAZARDOUS LOCATION	DRIP COVER	SCREENS	PAINT
C-FACE	STANDARD	RIGID	HORIZONTAL	FALSE	NONE	FALSE	NONE	BLUE - LEESON (ENAMEL)

BEARINGS		GREASE	SHAFT TYPE	SPECIAL DE	SPECIAL ODE	SHAFT MATERIAL	FRAME MATERIAL
DE	ODE						
BALL	BALL	POLYREX EM	JM	NONE	NONE	1045 HOT ROLLED (C-204)	ROLLED STEEL
6307	6206						

THERMO-PROTECTORS				THERMISTORS	CONTROL	SPACE HEATERS
THERMOSTATS	PROTECTORS	WDG RTDs	BRG RTDs			
NONE	NOT	NONE	NONE	NONE	FALSE	NONE VOLTS

*

N

O

T

E

S

INVERTER TORQUE: VARIABLE 10:1

INV. HP SPEED RANGE: NONE

ENCODER: NONE

NONE NONE

NONE NONE PPR

BRAKE: NONE NONE

NONE P/N NONE

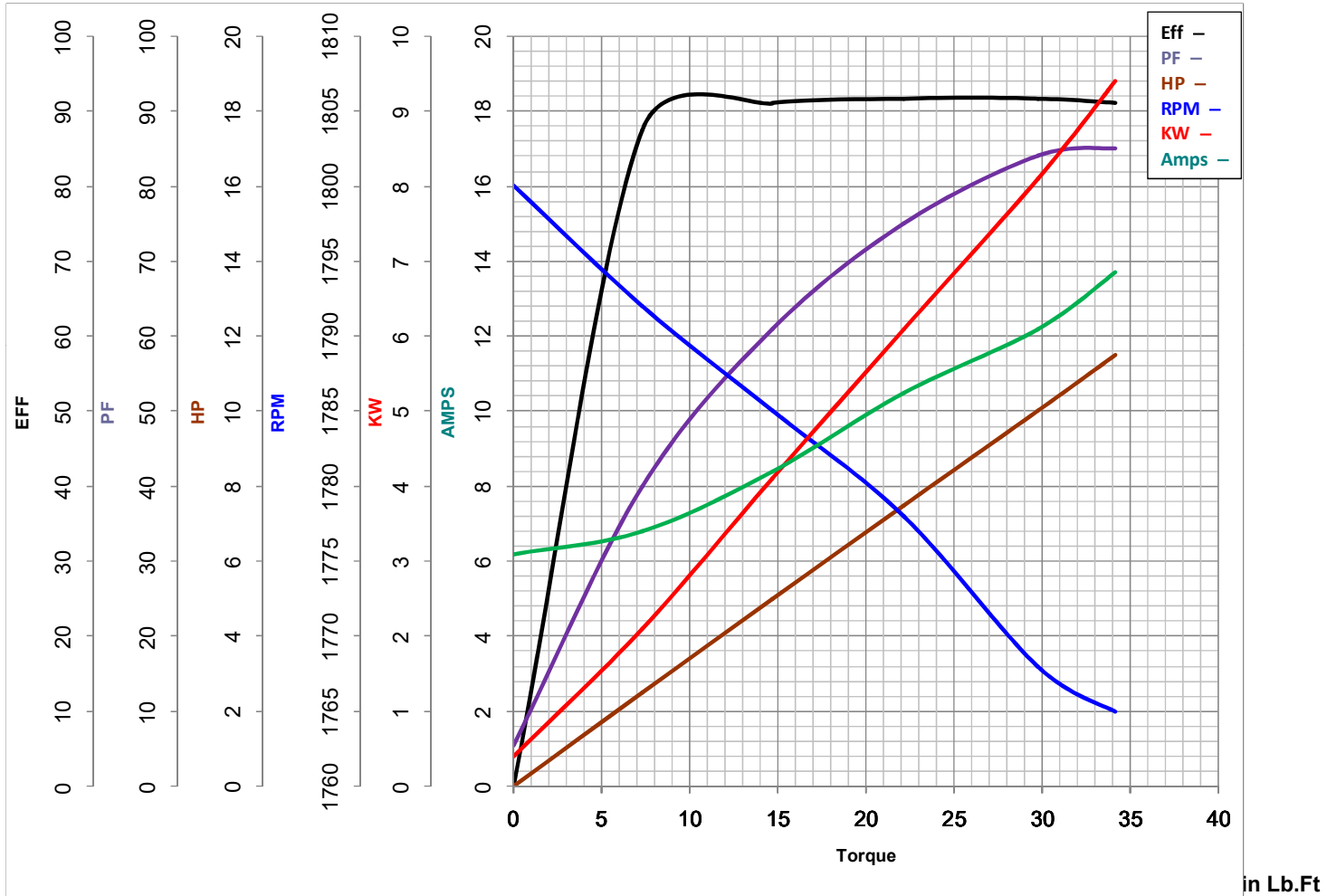
NONE NONE

FT-LB NONE V NONE Hz



LEESON ELECTRIC CORPORATION

TYPICAL PERFORMANCE CURVE for AC MOTOR

Model No 199782.00Curve at 460
60
10Volts
HZ
HPHP 10&7.5PHASE 3VOLTS 230/460&190/380Catalog No 199782.00HZ 60&50RPM 1768&1472

FL TORQUE 29.8 Lb.Ft
 BD TORQUE 85.0 Lb.Ft
 LR TORQUE 50 Lb.Ft

FL AMPS 24.4/12.2
 PU TORQUE 44.0 Lb.Ft
 LR AMPS 87

WINDING CHT21540007-1

Date 10/29/2018