

PRODUCT INFORMATION PACKET



Model No: 199745.00

Catalog No: 199745.00

Obsolete Replaced by B199745.00..20HP..1800RPM.256TC.ODP.230/460V.3PH.60HZ.CONT.40C.1.15SF.RIGID C
FACE.....GEN PURPOSE.....

Regal and Leeson are trademarks of Regal Rexnord Corporation or one of its affiliated companies.

©2023 Regal Rexnord Corporation, All Rights Reserved. MC017097E





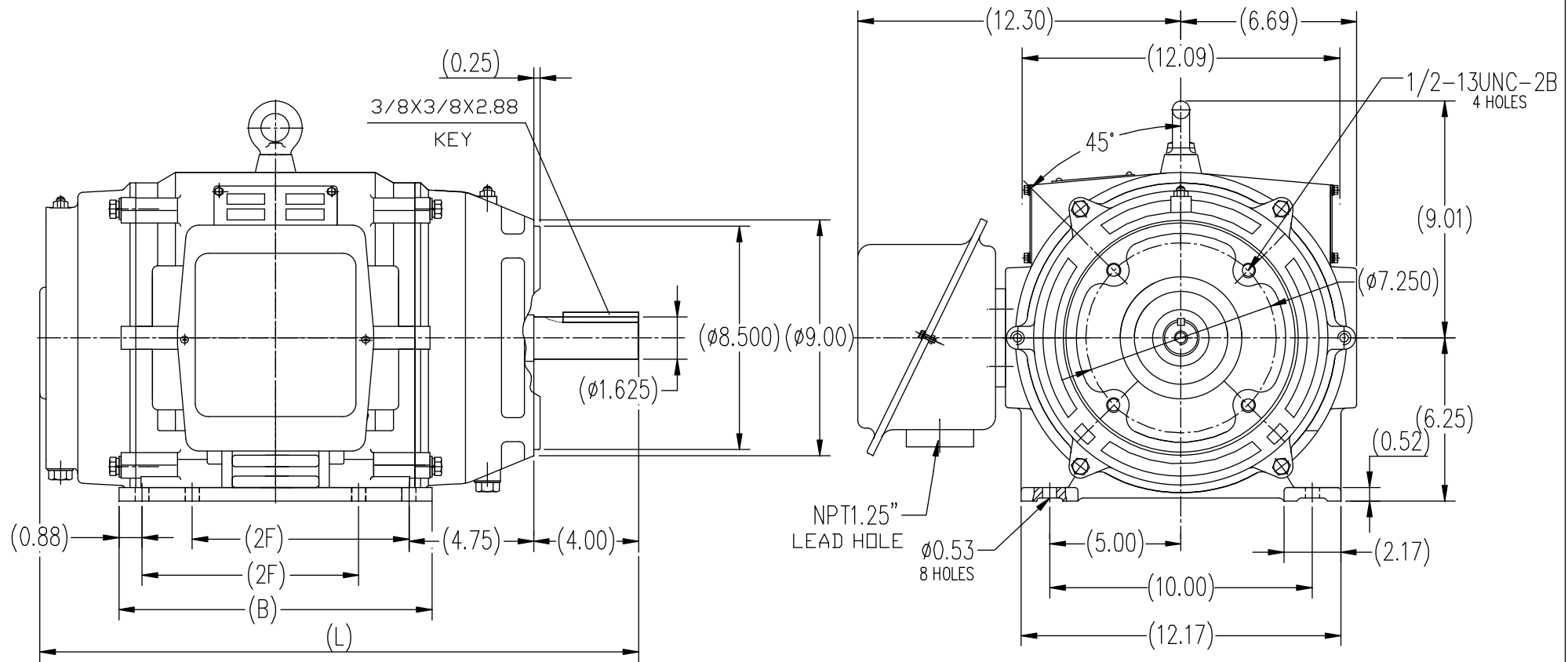
Nameplate Specifications

Phase	3	Output HP	20 & 15 Hp
Output KW	14.9 & 11.2 kW	Voltage	230/460 & 190/380 V
Speed	1773 & 1475 rpm	Service Factor	1.15 & 1.0
Frame	256TC	Enclosure	Drip Proof
Thermal Protection	No Protection	Efficiency	93 & 92.4 %
Ambient Temperature	40 °C	Frequency	60 & 50 Hz
Current	48/24 & 44/22 A	Power Factor	82
Duty	Continuous	Insulation Class	F
Design Code	B	KVA Code	G
Drive End Bearing Size	6309	Opp Drive End Bearing Size	6208
UL	Recognized	CSA	N
CE	Y	IP Code	22
Number of Speeds	1		


Technical Specifications

Electrical Type	Squirrel Cage Inverter Rated	Starting Method	Line Or Inverter
Poles	4	Rotation	Reversible
Resistance Main	.455 Ohms	Mounting	Rigid Base
Motor Orientation	Horizontal	Drive End Bearing	Ball
Opp Drive End Bearing	Ball	Frame Material	Cast Iron
Shaft Type	T	Assembly/Box Mounting	F1/F2 CAPABLE
Inverter Load	VARIABLE 10:1		
Outline Drawing	SS620658	Connection Drawing	EE7308K-LE

This is an uncontrolled document once printed or downloaded and is subject to change without notice. Date Created:06/22/2023




254TC	8.25	12.00	23
256TC	10.00	13.59	24.6
FRAME	2F	BB	C

		TOLERANCES UNLESS SPECIFIED		 Regal-Beloit Corporation		DRAWN ZYH 11-05-2013	
		DEC.	INCHES			CHK	
		.X	±.1	TITLE OUTLINE 254/256TC FR-ODP-CAST IRON		APPD	
		.XX	±.03			SCALE	1=6
		.XXX	±.005			REF	
		.XXXX	±.0005	MAT'L. FINISH		FMF	HWADA
						PREV	
NO.	REVISION	BY & DATE	CHK	ANG	±1/2	RFP CAD FILE SS620658	
THIS DRAWING IN DESIGN AND DETAIL IS OUR PROPERTY AND MUST NOT BE USED EXCEPT IN CONNECTION WITH OUR WORK ALL RIGHTS OF DESIGN AND INVENTION ARE RESERVED THIS IS AN ELECTRONICALLY GENERATED DOCUMENT - DO NOT SCALE THIS PRINT				DIST		SIZE B DRAWING NO. SS620658	REV.

LOW VOLTAGEHIGH VOLTAGE

VIEW OF TERMINAL END

				TOLERANCES UNLESS SPECIFIED		 ELECTRIC MOTORS GEARMOTORS AND DRIVES	DRAWN KJC 01-27-2003					
				DEC.	INCHES		CHK ML 01-28-2003					
				.X	±.1		APPD TB 01-28-2003					
				.XX	±.02		SCALE 1.5=1					
				.XXX	±.005	TITLE CONNECTION DIAGRAM DELTA CONN. – 3Ø – 9 LEADS	REF					
01	NEW DRAWING CN36099	KJC 01-28-2003	TB	.XXXX	±.0005	MAT'L.	FMF					
NO.	REVISION	BY & DATE	CHK	ANG	±7'30"	FINISH	PREV					
THIS DRAWING IN DESIGN AND DETAIL IS OUR PROPERTY AND MUST NOT BE USED EXCEPT IN CONNECTION WITH OUR WORK ALL RIGHTS OF DESIGN AND INVENTION ARE RESERVED THIS IS AN ELECTRONICALLY GENERATED DOCUMENT – DO NOT SCALE THIS PRINT				RFP		CAD FILE EE7308K-LE		SIZE	DRAWING NO.	PAGE	OF	REV.
				DIST WP				A	EE7308K-LE			