

# PRODUCT INFORMATION PACKET



Model No: 199743.00

Catalog No: 199743.00

Obsolete Replaced by B199743.00..15HP..1800RPM.254TC.ODP.230/460V.3PH.60HZ.CONT.40C.1.15SF.RIGID...  
...GEN PURPOSE.....

Regal and Leeson are trademarks of Regal Rexnord Corporation or one of its affiliated companies.

©2023 Regal Rexnord Corporation, All Rights Reserved. MC017097E





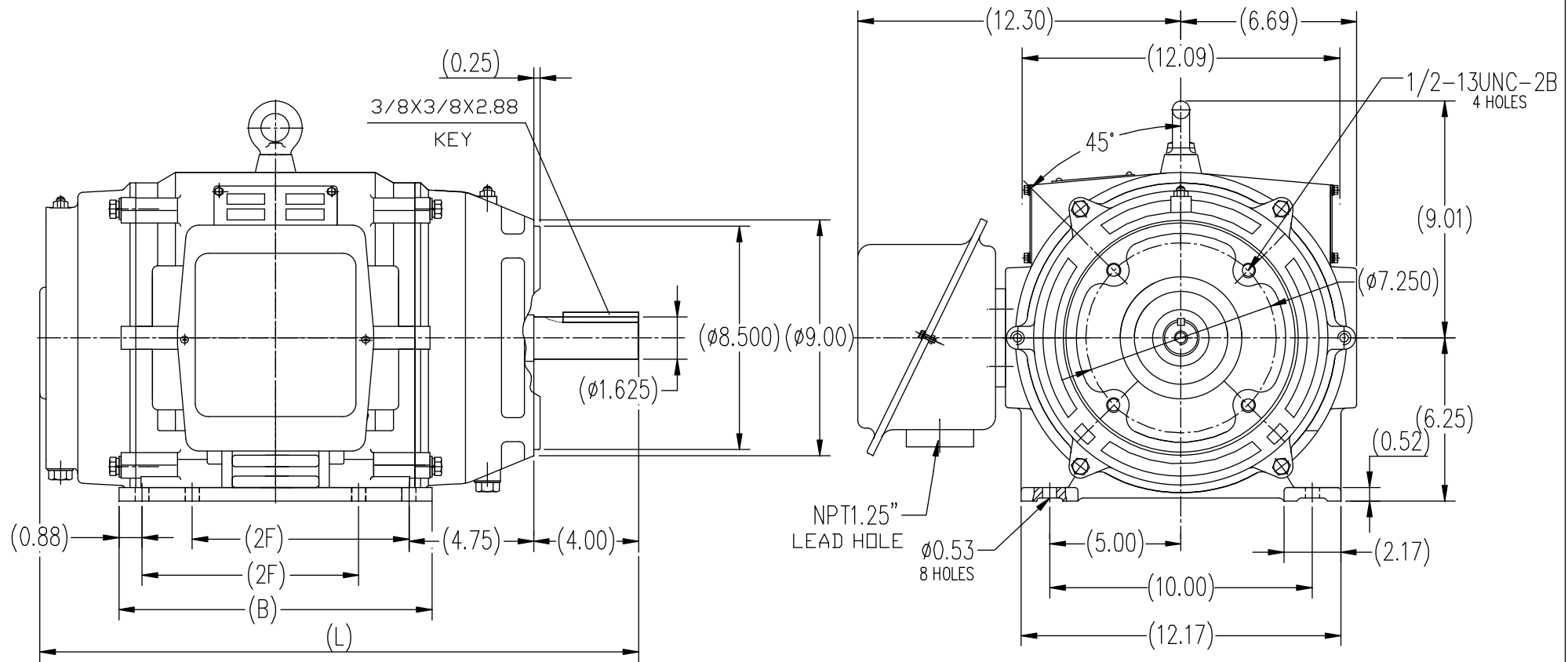
### Nameplate Specifications

|                        |                       |                            |                     |
|------------------------|-----------------------|----------------------------|---------------------|
| Phase                  | 3                     | Output HP                  | 15 & 10 Hp          |
| Output KW              | 11.2 & 7.5 kW         | Voltage                    | 230/460 & 190/380 V |
| Speed                  | 1773 & 1480 rpm       | Service Factor             | 1.15 & 1.0          |
| Frame                  | 254TC                 | Enclosure                  | Drip Proof          |
| Thermal Protection     | No Protection         | Efficiency                 | 93 & 92.4 %         |
| Ambient Temperature    | 40 °C                 | Frequency                  | 60 & 50 Hz          |
| Current                | 36.5/18.3 & 31/15.4 A | Power Factor               | 81                  |
| Duty                   | Continuous            | Insulation Class           | F                   |
| Design Code            | B                     | KVA Code                   | G                   |
| Drive End Bearing Size | 6309                  | Opp Drive End Bearing Size | 6208                |
| UL                     | Recognized            | CSA                        | N                   |
| CE                     | Y                     | IP Code                    | 22                  |
| Number of Speeds       | 1                     |                            |                     |

### Technical Specifications

|                       |                              |                       |                  |
|-----------------------|------------------------------|-----------------------|------------------|
| Electrical Type       | Squirrel Cage Inverter Rated | Starting Method       | Line Or Inverter |
| Poles                 | 4                            | Rotation              | Reversible       |
| Resistance Main       | .6729 Ohms                   | Mounting              | Rigid Base       |
| Motor Orientation     | Horizontal                   | Drive End Bearing     | Ball             |
| Opp Drive End Bearing | Ball                         | Frame Material        | Cast Iron        |
| Shaft Type            | T                            | Assembly/Box Mounting | F1/F2 CAPABLE    |
| Inverter Load         | VARIABLE 10:1                |                       |                  |
| Outline Drawing       | SS620658                     | Connection Drawing    | EE7308-LE        |

This is an uncontrolled document once printed or downloaded and is subject to change without notice. Date Created:06/22/2023

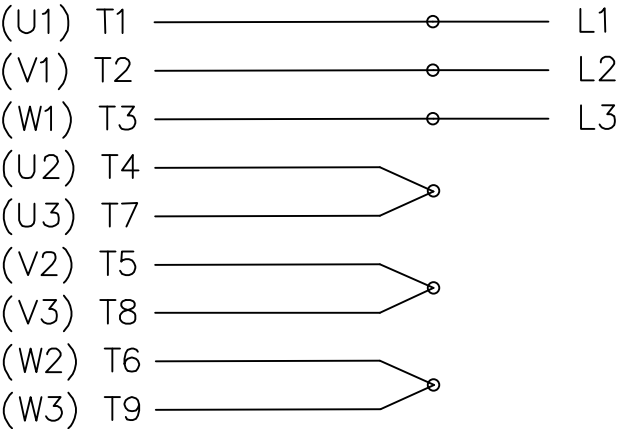


|       |       |       |      |
|-------|-------|-------|------|
| 254TC | 8.25  | 12.00 | 23   |
| 256TC | 10.00 | 13.59 | 24.6 |
| FRAME | 2F    | BB    | C    |

|  |          | TOLERANCES<br>UNLESS SPECIFIED |        | REGAL Regal-Beloit Corporation                 | DRAWN ZYH 11-05-2013 |             |
|--|----------|--------------------------------|--------|--|----------------------|-------------|
|  |          | DEC.                           | INCHES |  | CHK                  |             |
|  |          | .X                             | ±.1    | TITLE<br>OUTLINE<br>254/256TC FR-ODP-CAST IRON | APPD                 |             |
|  |          | .XX                            | ±.03   |  | SCALE                | 1=6         |
|  |          | .XXX                           | ±.005  |  | REF                  |             |
|  |          | .XXXX                          | ±.0005 | MAT'L.   | FMF                  | HWADA       |
| NO.  | REVISION | BY & DATE                      | CHK    | ANG  | FINISH               | PREV        |
| THIS DRAWING IN DESIGN AND DETAIL IS OUR PROPERTY AND MUST NOT BE USED EXCEPT IN CONNECTION WITH OUR WORK. ALL RIGHTS OF DESIGN AND INVENTION ARE RESERVED. THIS IS AN ELECTRONICALLY GENERATED DOCUMENT - DO NOT SCALE THIS PRINT |          |                                |        | RFP  | CAD FILE             | SS620658    |
|  |          |                                |        | DIST   | SIZE                 | DRAWING NO. |
|  |          |                                |        |  | B                    | SS620658    |
|  |          |                                |        |  |                      | REV.        |

THREE PHASE  
DUAL VOLTAGE MOTOR

HIGH VOLTAGE



LOW VOLTAGE




T1 (U1)  
T4 (U2)  
T9 (W3)  
T7 (U3)  
T8 (V3)  
T6 (W2)  
T5 (V2)  
T2 (V1)  
T3 (W1)

VIEW OF TERMINAL END

REF.  
WINDING DIAGRAM

T8Y, T2Y, T2BL, T4BX, T2EC, T2G  
T6BZ, T2B, T6BL, T4AV, T6B, T4B

|  |   |                |            |                                |                    |   |   |      |                      |      |            |      |
|--|---|----------------|------------|--------------------------------|--------------------|---|---|------|----------------------|------|------------|------|
|  |   |                |            | TOLERANCES<br>UNLESS SPECIFIED |                    |  | ELECTRIC MOTORS<br>GEARMOTORS<br>AND DRIVES |      | DRAWN HLB 04-29-2002 |      |            |      |
|  |   |                |            | DEC.                           | INCHES             |   |   |      | CHK                  | ML   | 05-03-2002 |      |
|  |   |                |            | .X                             | ±.1                |   |   |      | APPD                 | GK   | 05-03-2002 |      |
|  |   |                |            | .XX                            | ±.01               | TITLE CONNECTION DIAGRAM<br>3Ø – DUAL VOLTAGE MOTOR                                   |   |      | SCALE 1=1            |      |            |      |
| 2  | ADDED IEC NOTATIONS... (U1), (V1) ETC. (MU105786) | REP 01-11-2012 | DR         | .XXX                           | ±.005              |   |   |      | REF                  |      |            |      |
| 1  | NEW DRAWING                                       | HLB 05-03-2002 | ML         | .XXXX                          | ±.0005             | MAT'L.  |   |      | FMF                  |      |            |      |
| NO.  | REVISION  | BY & DATE      | CHK        | ANG                            | ±1/2'              | FINISH  |   |      | PREV                 |      |            |      |
| THIS DRAWING IN DESIGN AND DETAIL IS OUR PROPERTY AND MUST NOT BE USED EXCEPT<br>IN CONNECTION WITH OUR WORK ALL RIGHTS OF DESIGN AND INVENTION ARE RESERVED<br>THIS IS AN ELECTRONICALLY GENERATED DOCUMENT – DO NOT SCALE THIS PRINT |   |                | RFP        |                                | CAD FILE EE7308-LE |   |   | SIZE | DRAWING NO.          | PAGE | OF         | REV. |
|  |   |                | DIST LB-WP |                                |                    |   |   | A    | EE7308-LE            |      |            | 2    |