

# PRODUCT INFORMATION PACKET



Model No: 199710.00

Catalog No: 199710.00

Obsolete,

Replaced by B199710.00 - 40HP..3600RPM.286TS.ODP.230/460V.3PH.60HZ.CONT.40C.1.15SF.RIGID.....GEN PURPOSE.

Regal and Leeson are trademarks of Regal Rexnord Corporation or one of its affiliated companies.

©2023 Regal Rexnord Corporation, All Rights Reserved. MC017097E





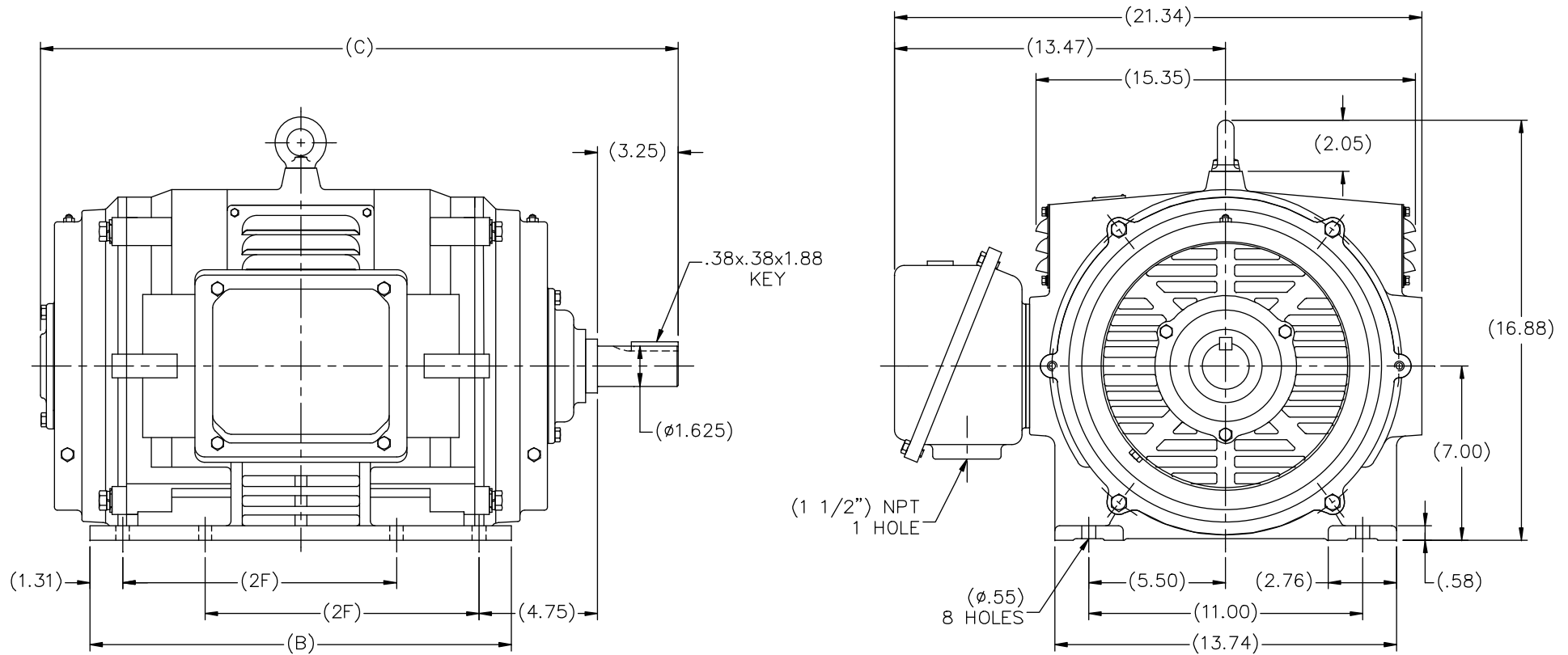
### Nameplate Specifications

Phase	3	Output HP	40 & 30 Hp
Output KW	30.0 & 22.4 kW	Voltage	230/460 & 190/380 V
Speed	3545 & 2950 rpm	Service Factor	1.15 & 1.15
Frame	286TS	Enclosure	Drip Proof
Thermal Protection	No Protection	Efficiency	92.4 & 91.7 %
Ambient Temperature	40 °C	Frequency	60 & 50 Hz
Current	89/44.5 & 81/40.5 A	Power Factor	89.5
Duty	Continuous	Insulation Class	F
Design Code	B	KVA Code	F
Drive End Bearing Size	6211	Opp Drive End Bearing Size	6211
UL	Recognized	CSA	Y
CE	Y	IP Code	12
Number of Speeds	1		

### Technical Specifications

Electrical Type	Squirrel Cage Inverter Rated	Starting Method	Line Or Inverter
Poles	2	Rotation	Reversible
Resistance Main	.187 Ohms	Mounting	Rigid Base
Motor Orientation	Horizontal	Drive End Bearing	Ball
Opp Drive End Bearing	Ball	Frame Material	Cast Iron
Shaft Type	TS	Assembly/Box Mounting	F1/F2 CAPABLE
Inverter Load	VARIABLE 10:1		
Outline Drawing	SS620239	Connection Drawing	EE7308K_LE

This is an uncontrolled document once printed or downloaded and is subject to change without notice. Date Created:06/22/2023

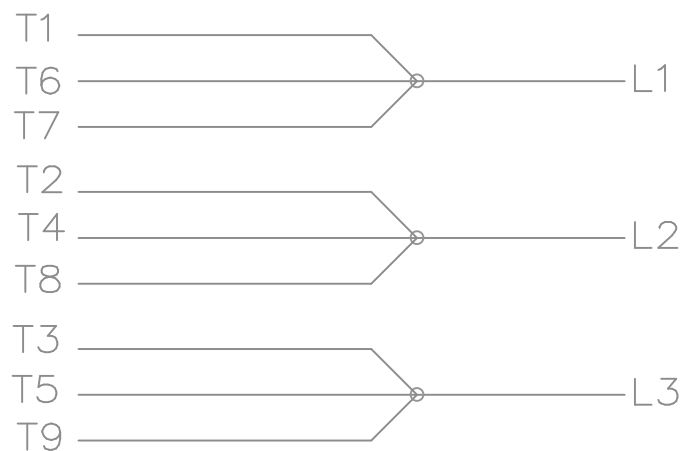
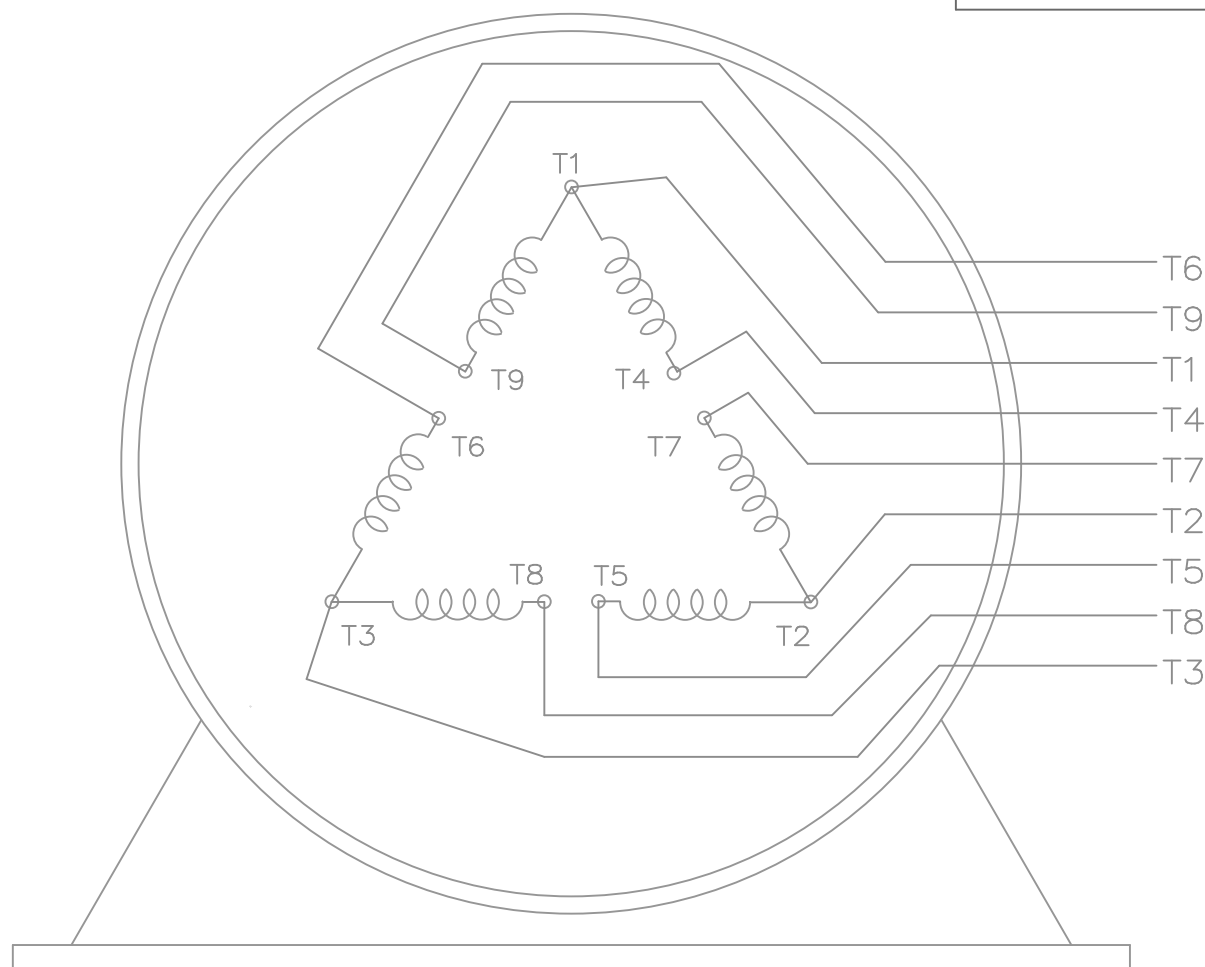
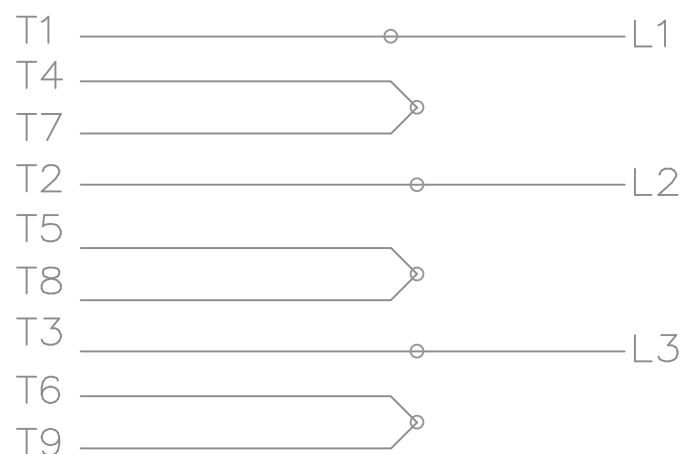


(MAY NOT BE DRAWN TO SCALE)


DIMENSIONS IN TABLE ARE CONSIDERED (REFERENCE)

284TS	24.41	15.55	9.50
286TS	25.79	16.93	11.00
FRAME	C	B	2F

		TOLERANCES UNLESS SPECIFIED		REGAL REGAL-BELOIT CORPORATION		DRAWN MSJ 12-15-2009	
NO.	REVISION	BY & DATE	CHK	ANG	FINISH	CHK	TJW 12-16-2009
						APPD	SB 12-16-2009
						SCALE	5=18
						REF	
						FMF	HWADA
						PREV	
THIS DRAWING IN DESIGN AND DETAIL IS OUR PROPERTY AND MUST NOT BE USED EXCEPT IN CONNECTION WITH OUR WORK ALL RIGHTS OF DESIGN AND INVENTION ARE RESERVED THIS IS AN ELECTRONICALLY GENERATED DOCUMENT - DO NOT SCALE THIS PRINT				RFP	CAD FILE SS620239	SIZE	DRAWING NO. PAGE OF REV.
				DIST		B	SS620239

LOW VOLTAGEHIGH VOLTAGE

VIEW OF TERMINAL END

				TOLERANCES UNLESS SPECIFIED			ELECTRIC MOTORS GEARMOTORS AND DRIVES			DRAWN KJC 01-27-2003		
				DEC.	INCHES					CHK ML 01-28-2003		
				.X	±.1					APPD TB 01-28-2003		
				.XX	±.02					SCALE 1.5=1		
				.XXX	±.005					REF		
01	NEW DRAWING CN36099	KJC 01-28-2003	TB	.XXXX	±.0005	MAT'L.					FMF	
NO.	REVISION	BY & DATE	CHK	ANG	±7'30"	FINISH					PREV	
THIS DRAWING IN DESIGN AND DETAIL IS OUR PROPERTY AND MUST NOT BE USED EXCEPT IN CONNECTION WITH OUR WORK ALL RIGHTS OF DESIGN AND INVENTION ARE RESERVED THIS IS AN ELECTRONICALLY GENERATED DOCUMENT – DO NOT SCALE THIS PRINT			RFP		CAD FILE EE7308K-LE				SIZE	DRAWING NO.	PAGE OF	REV.
			DIST WP						A	EE7308K-LE		01