

PRODUCT INFORMATION PACKET



Model No: 199709.00

Catalog No: 199709.00

Obsolete,

ced by B199709.00 - 30HP..1200RPM.326T.ODP.230/460V.3PH.60HZ.CONT.40C.1.15SF.RIGID.....GEN PURPOSE..



Regal and Leeson are trademarks of Regal Rexnord Corporation or one of its affiliated companies.

©2023 Regal Rexnord Corporation, All Rights Reserved. MC017097E





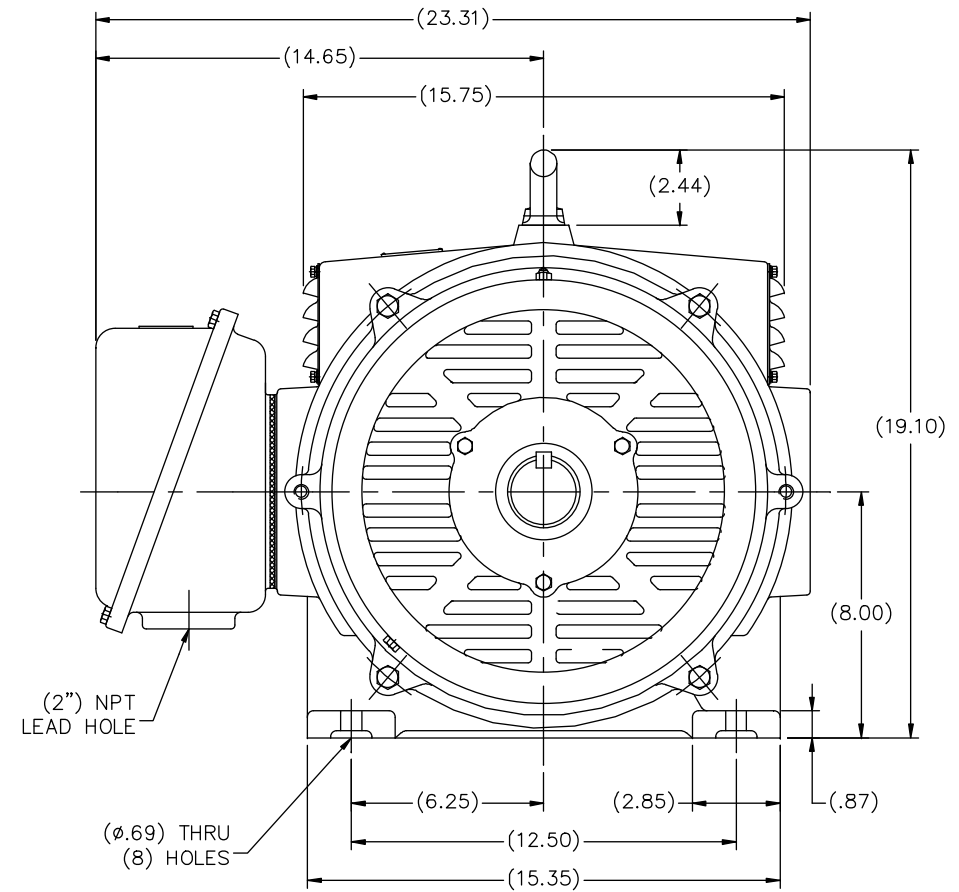
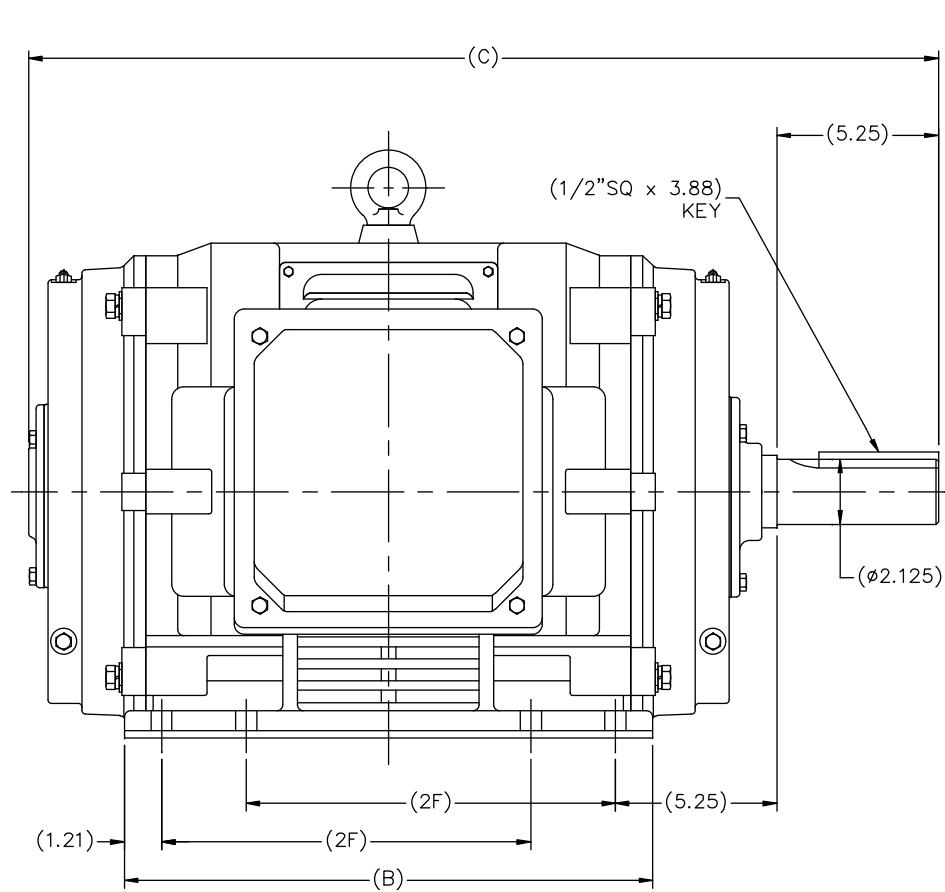
Nameplate Specifications

Phase	3	Output HP	30 & 25 Hp
Output KW	22.4 & 18.7 kW	Voltage	230/460 & 190/380 V
Speed	1188 & 990 rpm	Service Factor	1.15 & 1.15
Frame	326T	Enclosure	Drip Proof
Thermal Protection	No Protection	Efficiency	93.6 & 93 %
Ambient Temperature	40 °C	Frequency	60 & 50 Hz
Current	79/39.5 & 79/39.5 A	Power Factor	75.5
Duty	Continuous	Insulation Class	F
Design Code	B	KVA Code	G
Drive End Bearing Size	6312	Opp Drive End Bearing Size	6311
UL	Recognized	CSA	Y
CE	Y	IP Code	12
Number of Speeds	1		

Technical Specifications

Electrical Type	Squirrel Cage Inverter Rated	Starting Method	Wye Start Delta Run Or Inverter
Poles	6	Rotation	Reversible
Resistance Main	.185 Ohms	Mounting	Rigid Base
Motor Orientation	Horizontal	Drive End Bearing	Ball
Opp Drive End Bearing	Ball	Frame Material	Cast Iron
Shaft Type	T	Assembly/Box Mounting	F1/F2 CAPABLE
Inverter Load	VARIABLE 10:1		
Outline Drawing	SS620242	Connection Drawing	EE-7308AA-LE

This is an uncontrolled document once printed or downloaded and is subject to change without notice. Date Created:06/22/2023



(MAY NOT BE DRAWN TO SCALE)

(DIMENSIONS IN TABLE ARE CONSIDERED REFERENCE)

324T	28.55	15.99	10.50
326T	29.73	17.17	12.00
FRAME	C	B	2F

		TOLERANCES UNLESS SPECIFIED		<div style="display: inline-block; background-color: black; color: white; padding: 2px 5px; font-weight: bold;">REGAL</div> <div style="display: inline-block; vertical-align: middle;">REGAL-BELOIT CORPORATION</div>		DRAWN MSG 01-11-2010	
		DEC.	INCHES			CHK	MJS 01-13-2010
		.X	±.1	TITLE OUTLINE 320T FR. - ODP - CAST IRON		APPD	SB 01-13-2010
		.XX	±.03			SCALE	5=18
		.XXX	±.005			REF	
		.XXX	±.0005			FMF	HWADA
NO.	REVISION	BY & DATE	CHK	ANG	FINISH	PREV	
THIS DRAWING IN DESIGN AND DETAIL IS OUR PROPERTY AND MUST NOT BE USED EXCEPT IN CONNECTION WITH OUR WORK ALL RIGHTS OF DESIGN AND INVENTION ARE RESERVED THIS IS AN ELECTRONICALLY GENERATED DOCUMENT - DO NOT SCALE THIS PRINT				RFP	CAD FILE SS620242	SIZE	DRAWING NO. PAGE OF REV.
				DIST		B	SS620242



CERTIFICATION DATA SHEET

1051 CHEYENNE AVE.
GRAFTON, WI 53024
PH. 262-377-8810

CONN. DIAGRAM: EE-7308AA-LE

CATALOG #: 199709.00

OUTLINE: SS620242

MOUNTING: F1/F2 CAPABLE

WINDING #: CHT32660003 1

TYPICAL MOTOR PERFORMANCE DATA

HP	kW	SYNC. RPM	F.L. RPM	FRAME	ENCLOSURE	KVA CODE	DESIGN
30&25	22.4&18.7	1200	1188&990	326T	DP	G	B

PH	Hz	VOLTS	AMPS	START TYPE	DUTY	INSL	S.F.	AMB°C
3	60/50	230/460&190/380	79/39.5&79/39.5	Y START D RUN OR INV	CONTINUOUS	F1	1.15/1.15	40

FULL LOAD EFF:	93.6&93	3/4 LOAD EFF:	93.6	1/2 LOAD EFF:	91.7	GTD. EFF	ELEC. TYPE
FULL LOAD PF:	75.5&75	3/4 LOAD PF:	69	1/2 LOAD PF:	55	91.7	SQ CAGE INV RATED

F.L. TORQUE	LOCKED ROTOR AMPS	L.R. TORQUE	B.D. TORQUE	F.L. RISE°C
133 LB-FT	400 / 200	206 LB-FT 156 %	272 LB-FT 206 %	40

SOUND PRESSURE @ 3 FT.	SOUND POWER	ROTOR WK^2	MAX. WK^2	SAFE STALL TIME	STARTS / HOUR	APPROX. MOTOR WGT
69 dBA	79 dBA	13.8 LB-FT^2	500 LB-FT^2	20 SEC.	2	650 LBS.

*** SUPPLEMENTAL INFORMATION ***

DE BRACKET TYPE	ODE BRACKET TYPE	MOUNT TYPE	ORIENTATION	SEVERE DUTY	HAZARDOUS LOCATION	DRIP COVER	SCREENS	PAINT
STANDARD	STANDARD	RIGID	HORIZONTAL	FALSE	NONE	FALSE	NONE	BLUE (ENAMEL)

BEARINGS		GREASE	SHAFT TYPE	SPECIAL DE	SPECIAL ODE	SHAFT MATERIAL	FRAME MATERIAL
DE	ODE						
BALL	BALL	POLYREX EM	T	NONE	NONE	AISI 1045 (C-240)	CAST IRON
6312	6311						

THERMO-PROTECTORS				THERMISTORS	CONTROL	SPACE HEATERS
THERMOSTATS	PROTECTORS	WDG RTDs	BRG RTDs			
NONE	NOT	NONE	NONE	NONE	FALSE	NONE VOLTS

*

N

O

T

E

S

INVERTER TORQUE: VARIABLE 10:1

INV. HP SPEED RANGE: NONE

ENCODER: NONE

NONE NONE

NONE NONE PPR

BRAKE: NONE NONE

NONE P/N NONE

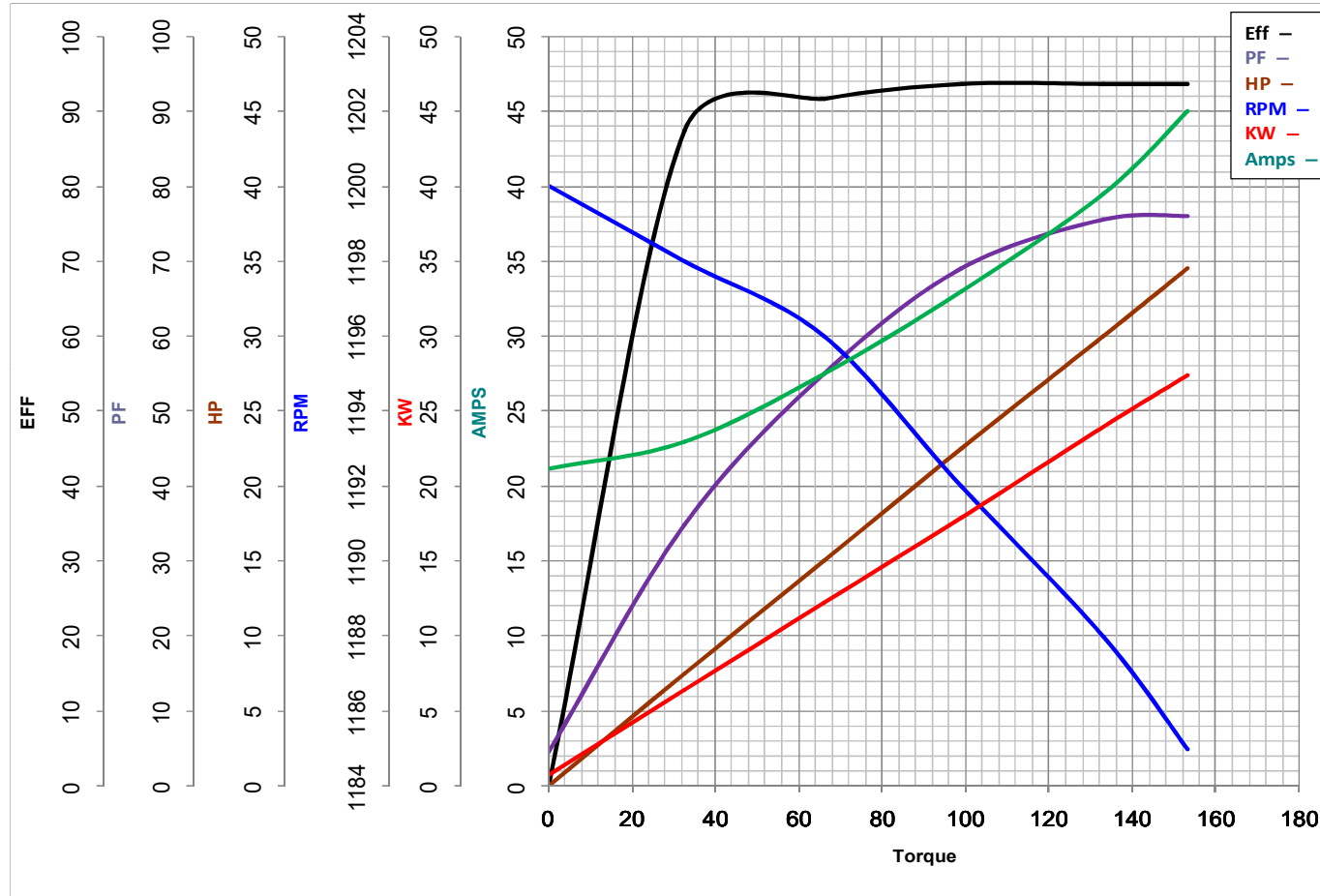
NONE NONE

NONE FT-LB NONE V NONE Hz

Model No 199709.00Catalog No 199709.00

LEESON ELECTRIC CORPORATION TYPICAL PERFORMANCE CURVE for AC MOTOR

 Curve at 460
60
30

 Volts
 HZ
 HP
 HP 30&25PHASE 3VOLTS 230/460&190/380HZ 60&50RPM 1188&990

Torque in Lb.Ft

 FL TORQUE 133 Lb.Ft
 BD TORQUE 272.0 Lb.Ft
 LR TORQUE 206 Lb.Ft

 FL AMPS 79/39.5
 PU TORQUE 240.0 Lb.Ft
 LR AMPS 200

WINDING CHT32660003-1

Date 11/13/2018

EC Declaration of Conformity

The undersigned representing
the manufacturer:

Regal Beloit America
100 East Randolph St.
Wausau, WI 54401

and the authorized representative
established within the Community:

Marathon Electric UK
6F Thistleton Road Ind. Estate
Market Overton
Oakham, Rutland LE15 7PP UK

are committed to providing customers with products that comply with applicable regulations and international protocols to which they are subject, including the requirements of the European Parliament Directive on the Harmonization of the laws relating to electrical equipment designed for use within certain voltage limits (2014/35/EU).

Regal Beloit America declares that the following product(s), to which this declaration relates, are in conformity with the relevant sections of the EC standards listed below.

This statement supersedes any statements previously issued pertaining to the product(s) listed below and is subject to change without notice.

Model No : 199709.00

(Model No. may contain prefix and/or suffix characters)

Catalog No : 199709.00

Rework No : N/A

Directives :

Low Voltage Directive 2014/35/EU

Harmonized Standards Used :

EN 60034-1: 2010 (IEC 60034-1: 2010)

EN 60034-5: 2001/A1:2007 (IEC 60034-5: 2000/A1:2006)

Authorized Representative:



Michael A. Logsdon
Vice President, Technology

Authorized Representative in the Community:



Julian Clark
Marketing Engineer

Created on 12/09/2022

CE 22