

PRODUCT INFORMATION PACKET



Model No: 199701.00
Catalog No: 199701.00

Obsolete,

ced by B199701.00 -.20HP..3600RPM.254T.ODP.230/460V.3PH.60HZ.CONT.40C.1.15SF.RIGID.....GEN PURPOSE..

Regal and Leeson are trademarks of Regal Rexnord Corporation or one of its affiliated companies.

©2023 Regal Rexnord Corporation, All Rights Reserved. MC017097E





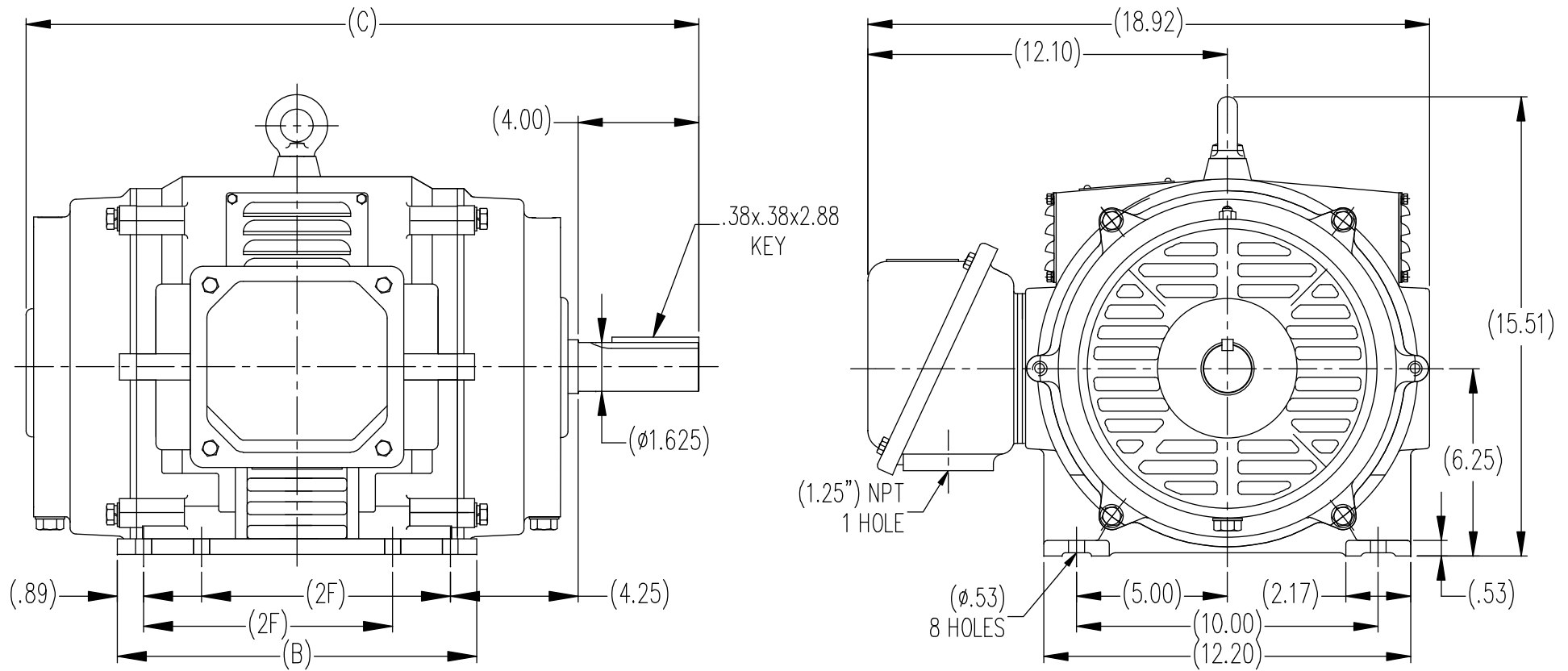
Nameplate Specifications

Phase	3	Output HP	20 & 15 Hp
Output KW	14.9 & 11.2 kW	Voltage	230/460 & 190/380 V
Speed	3540 & 2945 rpm	Service Factor	1.15 & 1.15
Frame	254T	Enclosure	Drip Proof
Thermal Protection	No Protection	Efficiency	91.7 & 91.7 %
Ambient Temperature	40 °C	Frequency	60 & 50 Hz
Current	45/22.5 & 41/20.5 A	Power Factor	89.5
Duty	Continuous	Insulation Class	F
Design Code	B	KVA Code	G
Drive End Bearing Size	6209	Opp Drive End Bearing Size	6208
UL	Recognized	CSA	Y
CE	Y	IP Code	22
Number of Speeds	1		

Technical Specifications

Electrical Type	Squirrel Cage Inverter Rated	Starting Method	Line Or Inverter
Poles	2	Rotation	Reversible
Resistance Main	.552 Ohms	Mounting	Rigid Base
Motor Orientation	Horizontal	Drive End Bearing	Ball
Opp Drive End Bearing	Ball	Frame Material	Cast Iron
Shaft Type	T	Assembly/Box Mounting	F1/F2 CAPABLE
Inverter Load	VARIABLE 10:1		
Outline Drawing	SS620237	Connection Drawing	EE7308K_LE

This is an uncontrolled document once printed or downloaded and is subject to change without notice. Date Created:06/22/2023



DIMENSIONS IN TABLE ARE CONSIDERED (REFERENCE)


(MAY NOT BE DRAWN TO SCALE)

254T	22.64	12.00	8.25
256T	24.22	13.59	10.00
FRAME	C	B	2F

				TOLERANCES UNLESS SPECIFIED		<div style="display: inline-block; background-color: black; color: white; padding: 2px 5px; font-weight: bold;">REGAL</div> REGAL-BELOIT CORPORATION	DRAWN MSG 12-25-2009
				DEC.	INCHES		
				.X	±.1	TITLE OUTLINE 254/256T FR. - ODP - CAST IRON	CHK TJW 12-16-2009
				.XX	±.03		APPD SB 12-16-2009
				.XXX	±.005		SCALE 1=1
				.XXXX	±.0005		REF
NO.	REVISION	BY & DATE	CHK	ANG	±1/2	FINISH	PREV
THIS DRAWING IN DESIGN AND DETAIL IS OUR PROPERTY AND MUST NOT BE USED EXCEPT IN CONNECTION WITH OUR WORK ALL RIGHTS OF DESIGN AND INVENTION ARE RESERVED THIS IS AN ELECTRONICALLY GENERATED DOCUMENT - DO NOT SCALE THIS PRINT						RFP	
						DIST	
						CAD FILE	SS620237
						SIZE	DRAWING NO.
						B	SS620237
							REV.

LOW VOLTAGEHIGH VOLTAGE

VIEW OF TERMINAL END

			TOLERANCES UNLESS SPECIFIED		 ELECTRIC MOTORS GEARMOTORS AND DRIVES	DRAWN KJC 01-27-2003		
			DEC.	INCHES		CHK ML 01-28-2003		
			.X	±.1		APPD TB 01-28-2003		
			.XX	±.02		SCALE 1.5=1		
			.XXX	±.005		REF		
01	NEW DRAWING CN36099	KJC 01-28-2003	TB	.XXXX ±.0005	MAT'L.	FMF		
NO.	REVISION	BY & DATE	CHK	ANG ±7'30"	FINISH	PREV		
THIS DRAWING IN DESIGN AND DETAIL IS OUR PROPERTY AND MUST NOT BE USED EXCEPT IN CONNECTION WITH OUR WORK ALL RIGHTS OF DESIGN AND INVENTION ARE RESERVED THIS IS AN ELECTRONICALLY GENERATED DOCUMENT - DO NOT SCALE THIS PRINT			RFP		CAD FILE EE7308K-LE	SIZE	DRAWING NO.	PAGE OF
			DIST	WP		A	EE7308K-LE	01