

PRODUCT INFORMATION PACKET



Model No: 199697.00

Catalog No: 199697.00

Obsolete,

ced by B199697.00 -.10HP..1200RPM.256T.ODP.230/460V.3PH.60HZ.CONT.40C.1.15SF.RIGID.....GEN PURPOSE..

Regal and Leeson are trademarks of Regal Rexnord Corporation or one of its affiliated companies.

©2023 Regal Rexnord Corporation, All Rights Reserved. MC017097E





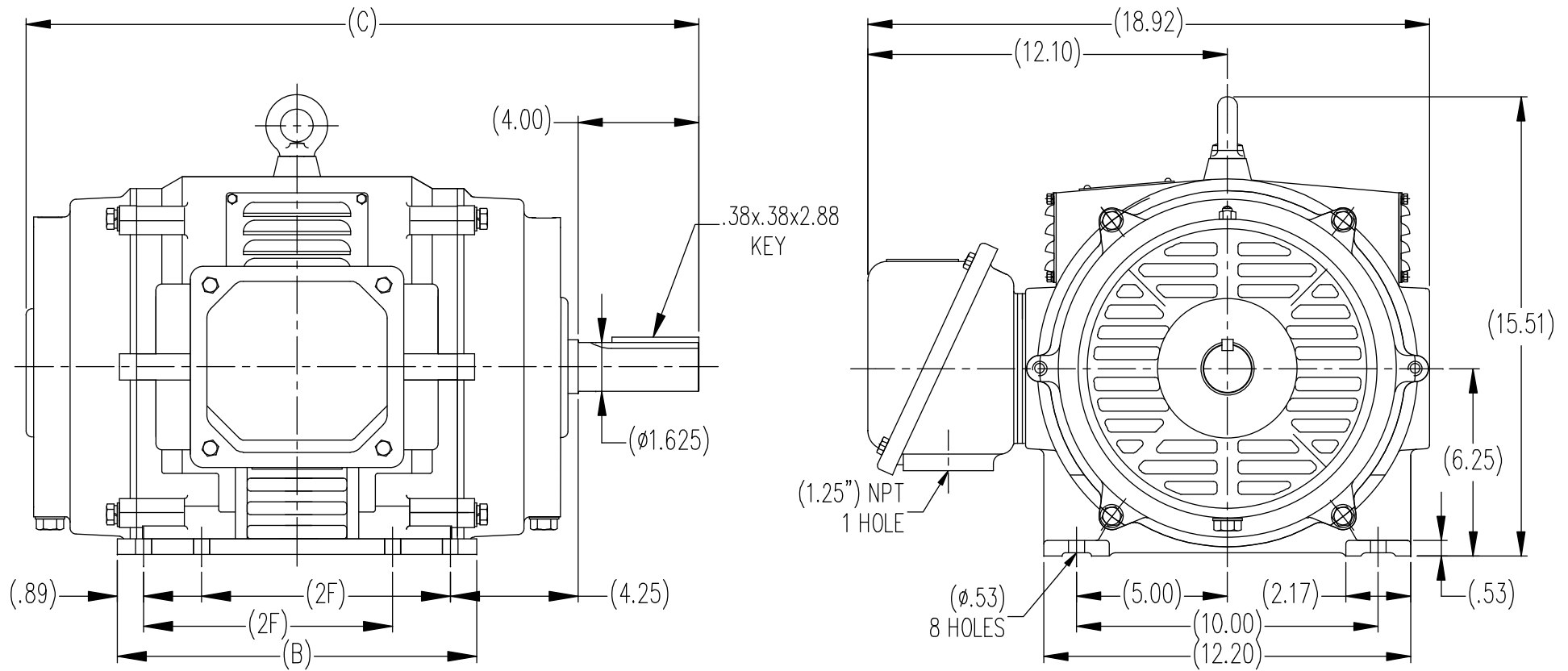
Nameplate Specifications

Phase	3	Output HP	10 & 7.50 Hp
Output KW	7.5 & 5.6 kW	Voltage	230/460 & 190/380 V
Speed	1182 & 980 rpm	Service Factor	1.15 & 1.15
Frame	254T	Enclosure	Drip Proof
Thermal Protection	No Protection	Efficiency	91.7 & 91 %
Ambient Temperature	40 °C	Frequency	60 & 50 Hz
Current	27.6/13.8 & 25.2/12.6 A	Power Factor	74
Duty	Continuous	Insulation Class	F
Design Code	B	KVA Code	G
Drive End Bearing Size	6309	Opp Drive End Bearing Size	6208
UL	Recognized	CSA	Y
CE	Y	IP Code	22
Number of Speeds	1		

Technical Specifications

Electrical Type	Squirrel Cage Inverter Rated	Starting Method	Line Or Inverter
Poles	6	Rotation	Reversible
Resistance Main	1.02 Ohms	Mounting	Rigid Base
Motor Orientation	Horizontal	Drive End Bearing	Ball
Opp Drive End Bearing	Ball	Frame Material	Cast Iron
Shaft Type	T	Assembly/Box Mounting	F1/F2 CAPABLE
Inverter Load	VARIABLE 10:1		
Outline Drawing	SS620237	Connection Drawing	EE7308K_LE

This is an uncontrolled document once printed or downloaded and is subject to change without notice. Date Created:06/22/2023



DIMENSIONS IN TABLE ARE CONSIDERED (REFERENCE)


(MAY NOT BE DRAWN TO SCALE)

254T	22.64	12.00	8.25
256T	24.22	13.59	10.00
FRAME	C	B	2F

				TOLERANCES UNLESS SPECIFIED		REGAL REGAL-BELOIT CORPORATION	DRAWN MSG 12-25-2009	
				DEC.	INCHES		CHK	TJW 12-16-2009
				.X	±.1	TITLE OUTLINE 254/256T FR. - ODP - CAST IRON	APPD SB 12-16-2009	
				.XX	±.03		SCALE 1=1	
				.XXX	±.005		REF	
				.XXXX	±.0005		FMF HUADA	
NO.	REVISION	BY & DATE	CHK	ANG	±1/2	FINISH	PREV	
THIS DRAWING IN DESIGN AND DETAIL IS OUR PROPERTY AND MUST NOT BE USED EXCEPT IN CONNECTION WITH OUR WORK ALL RIGHTS OF DESIGN AND INVENTION ARE RESERVED THIS IS AN ELECTRONICALLY GENERATED DOCUMENT - DO NOT SCALE THIS PRINT						RFP	CAD FILE	SS620237
						DIST	SIZE	DRAWING NO.
							B	SS620237
								REV.

LOW VOLTAGEHIGH VOLTAGE

VIEW OF TERMINAL END

				TOLERANCES UNLESS SPECIFIED		 ELECTRIC MOTORS GEARMOTORS AND DRIVES	DRAWN KJC 01-27-2003			
				DEC.	INCHES		CHK ML 01-28-2003			
				.X	±.1		APPD TB 01-28-2003			
				.XX	±.02	TITLE CONNECTION DIAGRAM DELTA CONN. - 3Ø - 9 LEADS	SCALE 1.5=1			
				.XXX	±.005		REF			
01	NEW DRAWING CN36099	KJC 01-28-2003	TB	.XXXX	±.0005	MAT'L.	FMF			
NO.	REVISION	BY & DATE	CHK	ANG	±7'30"	FINISH	PREV			
THIS DRAWING IN DESIGN AND DETAIL IS OUR PROPERTY AND MUST NOT BE USED EXCEPT IN CONNECTION WITH OUR WORK ALL RIGHTS OF DESIGN AND INVENTION ARE RESERVED THIS IS AN ELECTRONICALLY GENERATED DOCUMENT - DO NOT SCALE THIS PRINT				RFP	CAD FILE EE7308K-LE		SIZE	DRAWING NO.	PAGE OF	REV.
				DIST WP			A	EE7308K-LE		01