

PRODUCT INFORMATION PACKET



Model No: 199060.00

Catalog No: 199060.00

3SOLETE REPLACED BY B199060.00 ..15HP..1800RPM.254TC.TEFC.230/460V.3PH.60HZ.CONT.40C.1.15SF.RIGID
C.....GENERAL PURPOSE.....

Regal and Leeson are trademarks of Regal Rexnord Corporation or one of its affiliated companies.

©2023 Regal Rexnord Corporation, All Rights Reserved. MC017097E





Nameplate Specifications

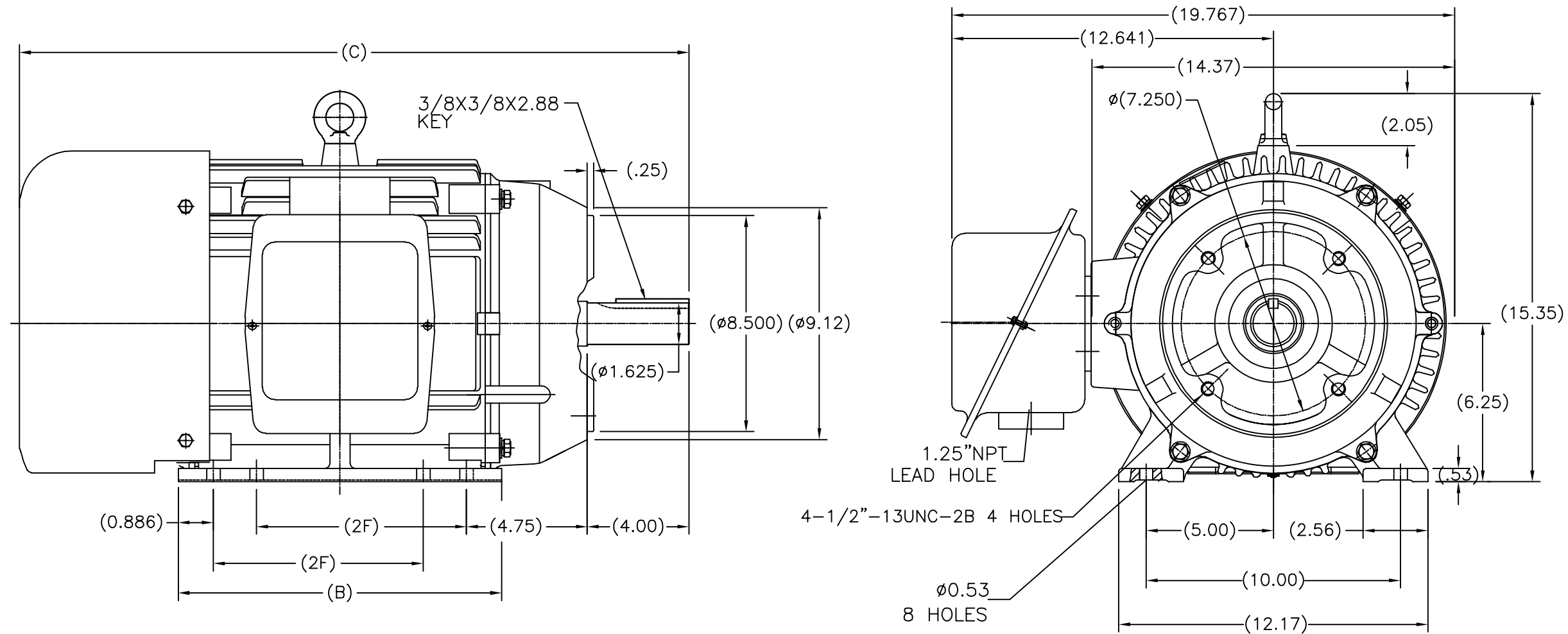
Phase	3	Output HP	15 & 10 Hp
Output KW	11.2 & 7.5 kW	Voltage	230/460 & 190/380 V
Speed	1770 & 1475 rpm	Service Factor	1.15 & 1.0
Frame	254TC	Enclosure	Totally Enclosed Fan Cooled
Thermal Protection	No Protection	Efficiency	92.4 & 93 %
Ambient Temperature	40 °C	Frequency	60 & 50 Hz
Current	37/18.5 & 31/15.5 A	Power Factor	82
Duty	Continuous	Insulation Class	F
Design Code	B	KVA Code	G
Drive End Bearing Size	6309	Opp Drive End Bearing Size	6209
UL	Recognized	CSA	Y
CE	N	IP Code	43
Number of Speeds	1		

Technical Specifications


Electrical Type	Squirrel Cage Inverter Rated	Starting Method	Line Or Inverter
Poles	2	Rotation	Reversible
Resistance Main	.555 Ohms	Mounting	Rigid Base
Motor Orientation	Horizontal	Drive End Bearing	Ball
Opp Drive End Bearing	Ball	Frame Material	Cast Iron
Shaft Type	T	Assembly/Box Mounting	F1/F2 CAPABLE
Inverter Load	CONSTANT 20:1		
Outline Drawing	B-SS620298	Connection Drawing	A-EE7308-LE

This is an uncontrolled document once printed or downloaded and is subject to change without notice. Date Created:06/22/2023

SS620298

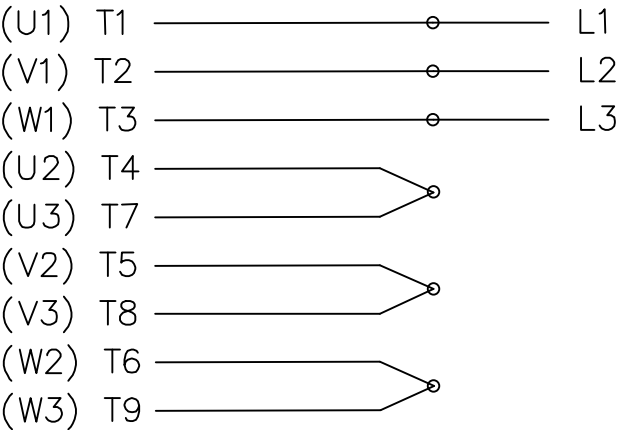


254	26.60	12.717	8.25
256	27.80	13.898	10.00
FRAME	C	B	2F

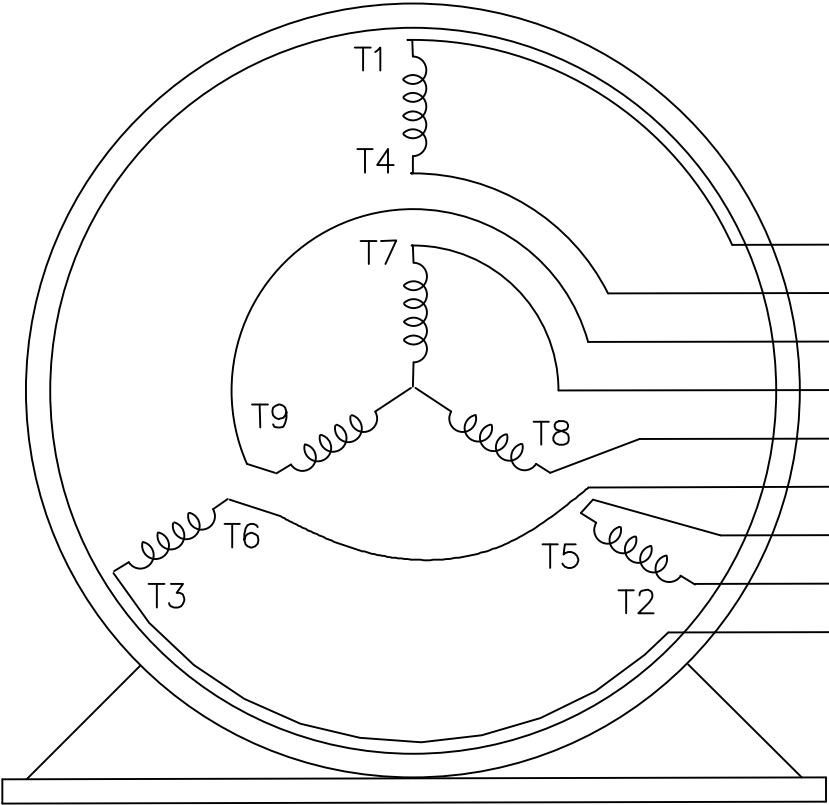
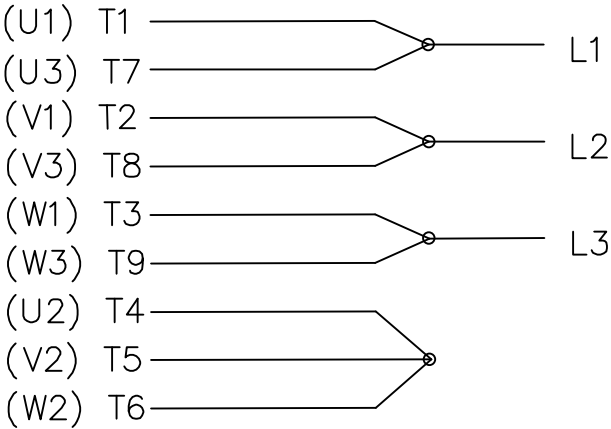
					TOLERANCES UNLESS SPECIFIED			REGAL-BELOIT CORPORATION		DRAWN ZYH 04-22-2012	
					DEC.	INCHES		CHK HZJ 04-22-2012			
					.X	±.1		APPD WGH 04-22-2012			
					.XX	±.03		SCALE 1=4			
					.XXX	±.005	TITLE OUTLINE 254/256TC FR-TEFC-CAST IRON		REF		
D	UPDATED DWG SENT FROM CHINA ECO-0074012			WGJ 5-6-2015	EMH .XXXX	±.0005	MAT'L.		FMF HWADA		
NO.	REVISION			BY & DATE	CHK	ANG	±1/2	FINISH	PREV		
THIS DRAWING IN DESIGN AND DETAIL IS OUR PROPERTY AND MUST NOT BE USED EXCEPT IN CONNECTION WITH OUR WORK ALL RIGHTS OF DESIGN AND INVENTION ARE RESERVED THIS IS AN ELECTRONICALLY GENERATED DOCUMENT - DO NOT SCALE THIS PRINT					RFP		CAD FILE SS620298		SIZE B	DRAWING NO. SS620298	REV. D
					DIST						

THREE PHASE
DUAL VOLTAGE MOTOR

HIGH VOLTAGE




LOW VOLTAGE



VIEW OF TERMINAL END

REF.
WINDING DIAGRAM

T8Y, T2Y, T2BL, T4BX, T2EC, T2G
T6BZ, T2B, T6BL, T4AV, T6B, T4B

				TOLERANCES UNLESS SPECIFIED			ELECTRIC MOTORS GEARMOTORS AND DRIVES		DRAWN HLB 04-29-2002					
				DEC.	INCHES				CHK	ML	05-03-2002			
				.X	±.1				APPD	GK	05-03-2002			
				.XX	±.01				TITLE CONNECTION DIAGRAM 3Ø – DUAL VOLTAGE MOTOR				SCALE	1=1
2	ADDED IEC NOTATIONS... (U1), (V1) ETC. (MU105786)	REP 01-11-2012	DR	.XXX	±.005	REF								
1	NEW DRAWING	HLB 05-03-2002	ML	.XXXX	±.0005	MAT'L.				FMF				
NO.	REVISION		BY & DATE	CHK	ANG	±1/2'	FINISH				PREV			
THIS DRAWING IN DESIGN AND DETAIL IS OUR PROPERTY AND MUST NOT BE USED EXCEPT IN CONNECTION WITH OUR WORK ALL RIGHTS OF DESIGN AND INVENTION ARE RESERVED THIS IS AN ELECTRONICALLY GENERATED DOCUMENT – DO NOT SCALE THIS PRINT				RFP			CAD FILE EE7308-LE			SIZE	DRAWING NO.	PAGE	OF	REV.
				DIST LB-WP						A	EE7308-LE			