

# PRODUCT INFORMATION PACKET



Model No: 199050.00

Catalog No: 199050.00

Obsolete Replaced by B199050.00..200HP..1200RPM.449T.TEFC.460V.3PH.60HZ.CONT.40C.1.15SF.RIGID.....

GENERAL PURPOSE.....



Regal and Leeson are trademarks of Regal Rexnord Corporation or one of its affiliated companies.

©2023 Regal Rexnord Corporation, All Rights Reserved. MC017097E





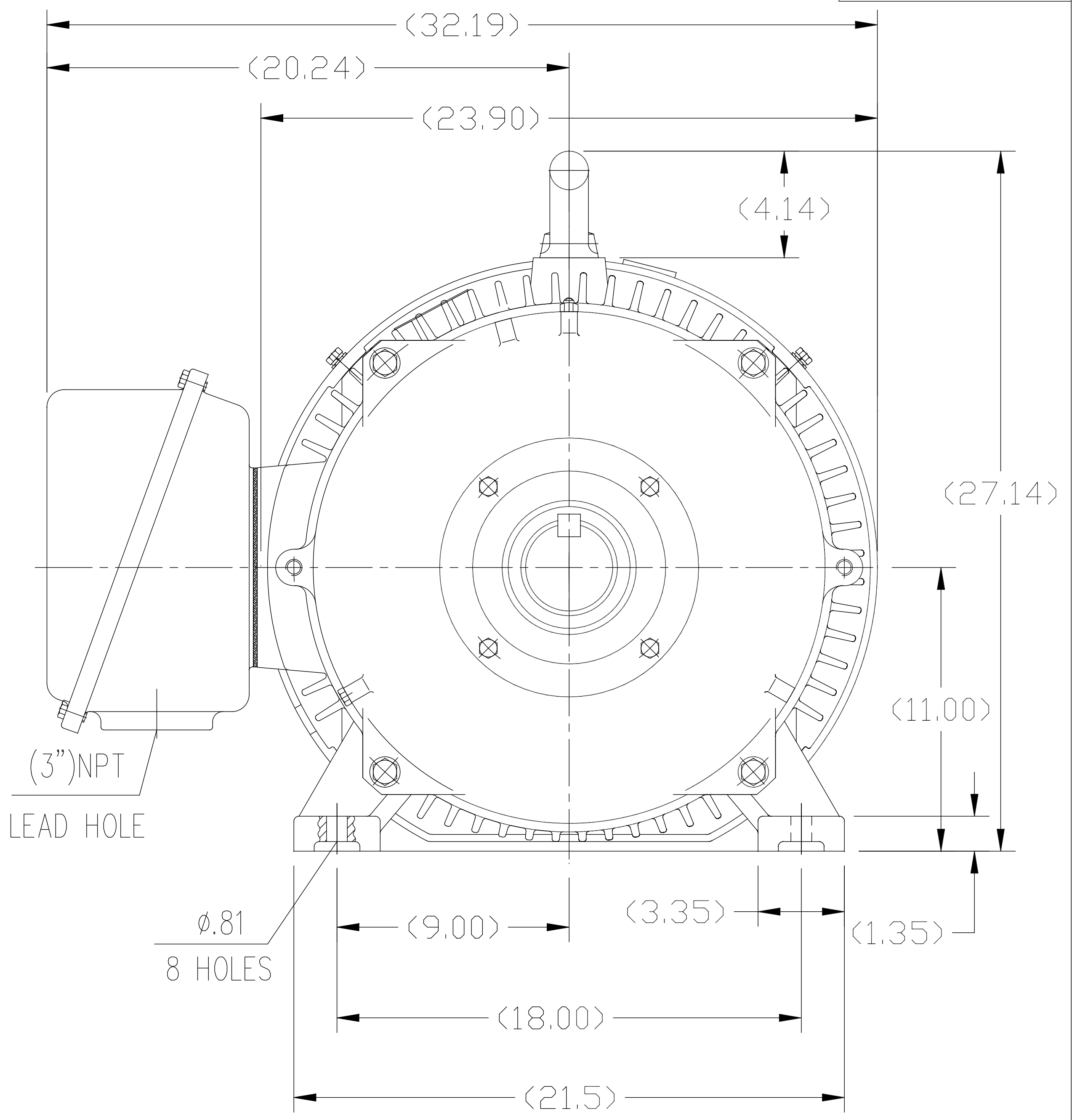
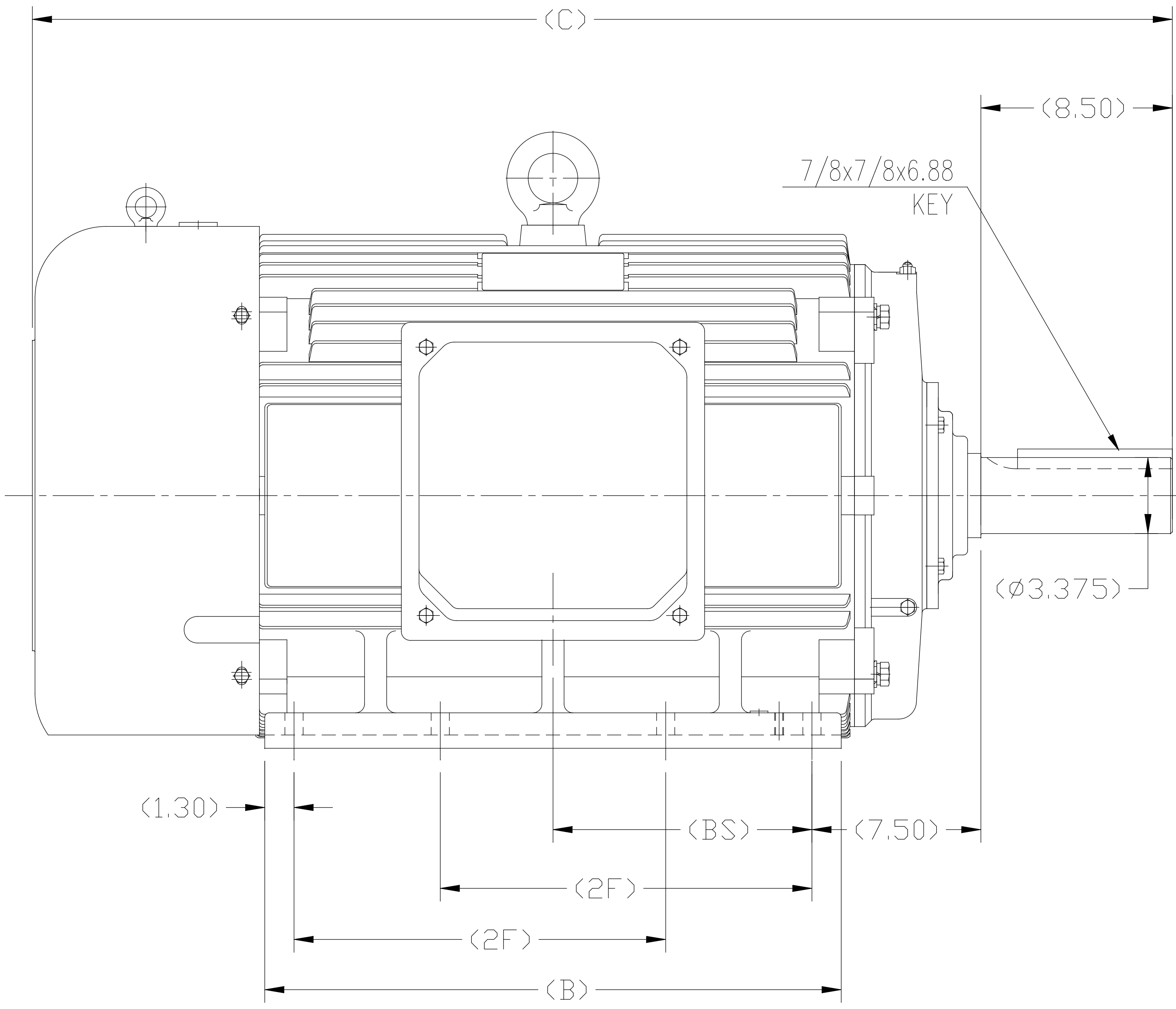
### Nameplate Specifications

Phase	3	Output HP	200 & 150 Hp
Output KW	149.0 & 112.0 kW	Voltage	460 & 380 V
Speed	1190 & 990 rpm	Service Factor	1.15 & 1.15
Frame	447/449T	Enclosure	Totally Enclosed Fan Cooled
Thermal Protection	No Protection	Efficiency	95.8 & 95.8 %
Ambient Temperature	40 °C	Frequency	60 & 50 Hz
Current	228 & 206 A	Power Factor	86
Duty	Continuous	Insulation Class	F
Design Code	B	KVA Code	G
Drive End Bearing Size	6319	Opp Drive End Bearing Size	6317
UL	Recognized	CSA	Y
CE	N	IP Code	43
Number of Speeds	1		

### Technical Specifications

Electrical Type	Squirrel Cage Inverter Rated	Starting Method	Part Wdg Start Or Inverter
Poles	6	Rotation	Reversible
Resistance Main	.018 Ohms	Mounting	Rigid Base
Motor Orientation	Horizontal	Drive End Bearing	Ball
Opp Drive End Bearing	Ball	Frame Material	Cast Iron
Shaft Type	T	Assembly/Box Mounting	F1/F2 CAPABLE
Inverter Load	CONSTANT 2:1		
Outline Drawing	SS620287-449T	Connection Drawing	A-EE7341C-LE

This is an uncontrolled document once printed or downloaded and is subject to change without notice. Date Created:06/22/2023



- 1. THIS MOTOR IS NOT DUAL DRILLED FOR 444T/445T OR 447T/449T
- 2. THIS MOTOR IS DRILLED FOR F1/F2 CAPABILITY

444T	50.79	25.60	14.50	11.50
445T	50.79	25.60	16.50	11.50
447T	55.91	30.70	20.00	14.06
449T	55.91	30.70	25.00	---
Frame	C	B	2F	BS

				TOLERANCES UNLESS SPECIFIED		<b>REGAL</b> REGAL-BELOIT CORPORATION		DRAWN ZYH 02-20-2010	
				DEC.	INCHES			CHK HZJ 02-20-2010	
				.X	±.1			APPD CL 02-20-2010	
F	UPDATED DRAWING PER MARK-UP	ECD-0108274	WGJ 7-10-16	EMH	.XX	±.03	TITLE	OUTLINE	SCALE 1=6
B	ADDED 'BS' DIM. UPDATED TITLE BLOCK	ECD-0048910	RFH 4-7-14	EH	.XXX	±.005	444/445/447/449T FR-TEFC-CAST IRON		REF
A	2 leads hole change to 1		CL 2010-9-8		.XXXX	±.0005	MAT'L.		FMF HWADA
NO.	REVISION		BY & DATE	CHK	ANG	±1/2°	FINISH		PREV
THIS DRAWING IN DESIGN AND DETAIL IS OUR PROPERTY AND MUST NOT BE USED EXCEPT IN CONNECTION WITH OUR WORK ALL RIGHTS OF DESIGN AND INVENTION ARE RESERVED THIS IS AN ELECTRONICALLY GENERATED DOCUMENT - DO NOT SCALE THIS PRINT				RFP	CAD FILE SS620287			SIZE B	DRAWING NO. SS620287
				DIST					REV. F

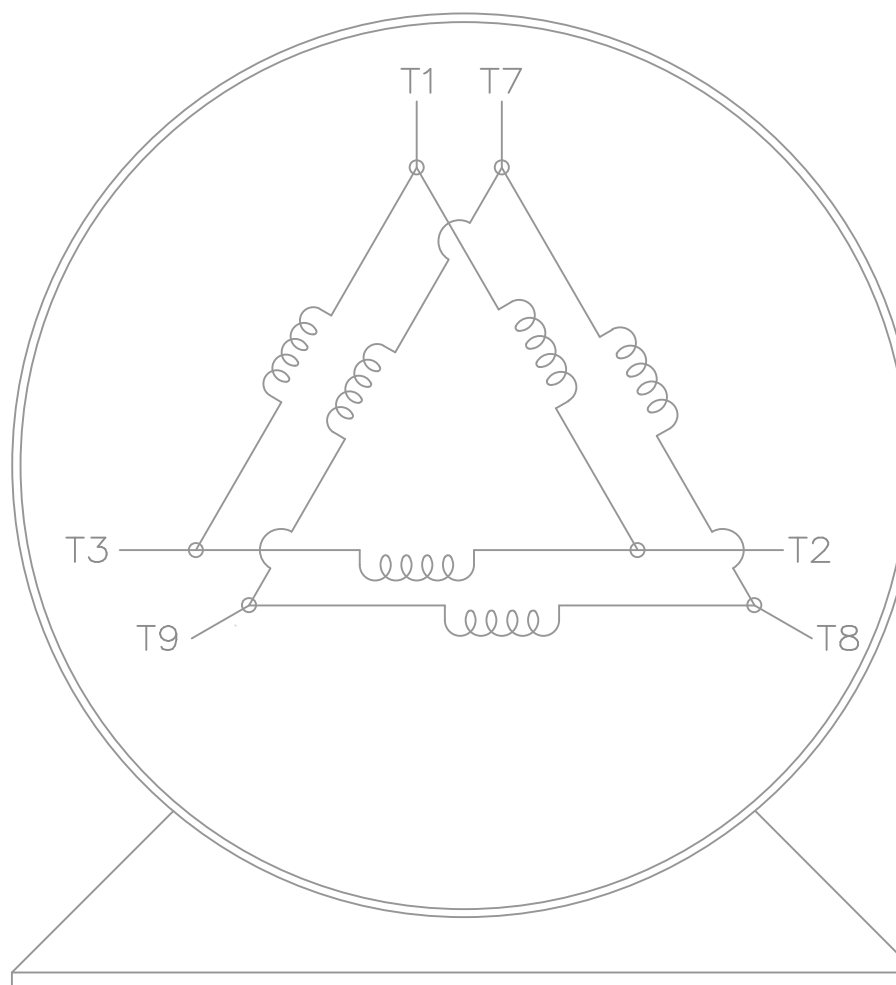
# THREE PHASE — PART WINDING START DELTA — 6 LEADS

## START


CONNECT T1 TO LINE 1  
CONNECT T2 TO LINE 2  
CONNECT T3 TO LINE 3  
T7-T8-T9 OPEN

## RUN

CONNECT T1&T7 TO LINE 1  
CONNECT T2&T8 TO LINE 2  
CONNECT T3&T9 TO LINE 3



VIEW OF TERMINAL END

				TOLERANCES UNLESS SPECIFIED		 ELECTRIC MOTORS GEARMOTORS AND DRIVES	DRAWN KL 07-23-2002						
				DEC.	INCHES		CHK DJK 07-23-2002						
				.X	± -		APPD EAB 07-23-2002						
				.XX	± -		SCALE 1=1						
				.XXX	± -	TITLE CONNECTION DIAGRAM 3ø - 6 LEADS	REF						
1	NEW DRAWING	MU42766	KL 07-23-2002	.XXXX	± -	MAT'L.	FMF						
NO.	REVISION		BY & DATE	CHK	ANG	± -	FINISH			PREV			
THIS DRAWING IN DESIGN AND DETAIL IS OUR PROPERTY AND MUST NOT BE USED EXCEPT IN CONNECTION WITH OUR WORK ALL RIGHTS OF DESIGN AND INVENTION ARE RESERVED THIS IS AN ELECTRONICALLY GENERATED DOCUMENT - DO NOT SCALE THIS PRINT				RFP		CAD FILE EE7341C-LE			SIZE	DRAWING NO.	PAGE	OF	REV.
				DIST WA-LB-LE					A	EE7341C-LE			1



# CERTIFICATION DATA SHEET

**1051 CHEYENNE AVE.  
GRAFTON, WI 53024  
PH. 262-377-8810**

**CONN. DIAGRAM:** A-EE7341C-LE

**CATALOG #:** 199050.00

**OUTLINE:** B-SS620287

**MOUNTING:** F1/F2 CAPABLE

**WINDING #:** CHT44960001 2

## TYPICAL MOTOR PERFORMANCE DATA

HP	kW	SYNC. RPM	F.L. RPM	FRAME	ENCLOSURE	KVA CODE	DESIGN
200&150	149&112	1200	1190&990	447/449T	TEFC	G	B

PH	Hz	VOLTS	AMPS	START TYPE	DUTY	INSL	S.F.	AMB°C
3	60/50	460&380	228&206	PWS OR INVERTER	CONTINUOUS	F1	1.15/1.15	40

<b>FULL LOAD EFF:</b>	95.8&95.8	<b>3/4 LOAD EFF:</b>	95.8	<b>1/2 LOAD EFF:</b>	95.4	<b>GTD. EFF</b>		<b>ELEC. TYPE</b>
<b>FULL LOAD PF:</b>	86&86	<b>3/4 LOAD PF:</b>	85	<b>1/2 LOAD PF:</b>	79	95.4		SQ CAGE INV RATED

F.L. TORQUE	LOCKED ROTOR AMPS	L.R. TORQUE	B.D. TORQUE	F.L. RISE°C
883 LB-FT	1425	1650 LB-FT 186 %	1900 LB-FT 215 %	80

SOUND PRESSURE @ 3 FT.	SOUND POWER	ROTOR WK^2	MAX. WK^2	SAFE STALL TIME	STARTS / HOUR	APPROX. MOTOR WGT
75 dBA	85 dBA	145 LB-FT^2	- LB-FT^2	25 SEC.	2	3050 LBS.

## \*\*\* SUPPLEMENTAL INFORMATION \*\*\*

DE BRACKET TYPE	ODE BRACKET TYPE	MOUNT TYPE	ORIENTATION	SEVERE DUTY	HAZARDOUS LOCATION	DRIP COVER	SCREENS	PAINT
STANDARD	STANDARD	RIGID	HORIZONTAL	FALSE	NONE	FALSE	NONE	BLUE (ENAMEL)

BEARINGS		GREASE	SHAFT TYPE	SPECIAL DE	SPECIAL ODE	SHAFT MATERIAL	FRAME MATERIAL
DE	ODE						
BALL	BALL	POLYREX EM	T	NONE	NONE	AISI 1045 (C-240)	CAST IRON
6319	6317						

THERMO-PROTECTORS				THERMISTORS	CONTROL	SPACE HEATERS
THERMOSTATS	PROTECTORS	WDG RTDs	BRG RTDs			
NONE	NOT	NONE	NONE	NONE	FALSE	NONE VOLTS

\*

N

O

T

E

S

**INVERTER TORQUE:** CONSTANT 2:1

**INV. HP SPEED RANGE:** NONE

**ENCODER:** NONE

NONE NONE

NONE NONE PPR

**BRAKE:** NONE NONE

NONE P/N NONE

NONE NONE

NONE FT-LB NONE V NONE Hz

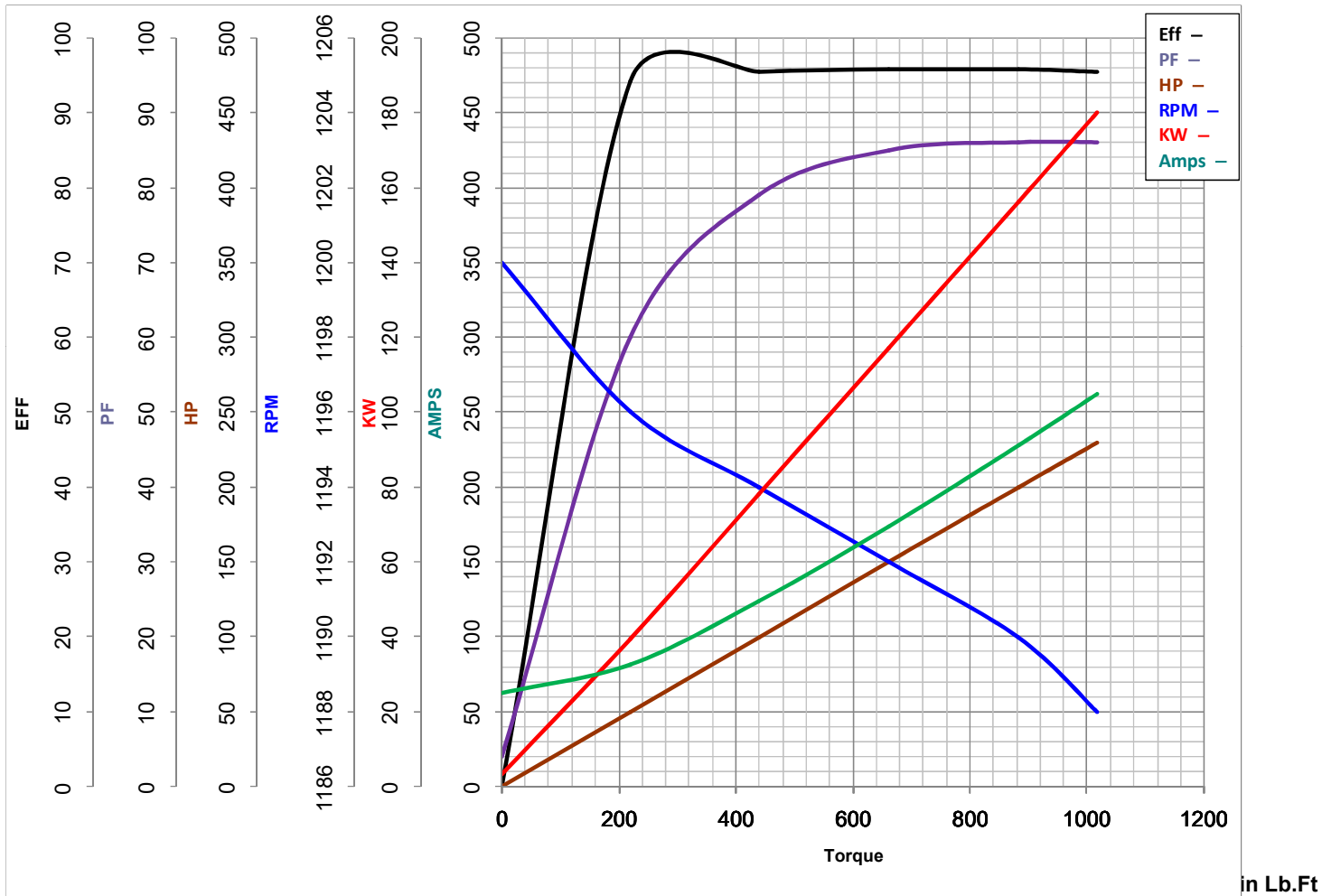


# LEESON ELECTRIC CORPORATION

## TYPICAL PERFORMANCE CURVE for AC MOTOR

Model No 199050.00

Curve at

460  
60  
200Volts  
HZ  
HPHP 200&150PHASE 3VOLTS 460&380Catalog No 199050.00HZ 60&50RPM 1190&990

FL TORQUE 883 Lb.Ft  
 BD TORQUE 1900 Lb.Ft  
 LR TORQUE 1650 Lb.Ft

FL AMPS 228  
 PU TORQUE 1450.0 Lb.Ft  
 LR AMPS 1425

WINDING CHT44960001-2

Date 11/13/2018