

# PRODUCT INFORMATION PACKET



Model No: 199044.00

Catalog No: 199044.00

Obsolete,

Replaced by B199044.00 - .125HP..1200RPM.445T.TEFC.460V.3PH.60HZ.CONT.40C.1.15SF.RIGID.....GENERAL PURPOSE



Regal and Leeson are trademarks of Regal Rexnord Corporation or one of its affiliated companies.

©2023 Regal Rexnord Corporation, All Rights Reserved. MC017097E





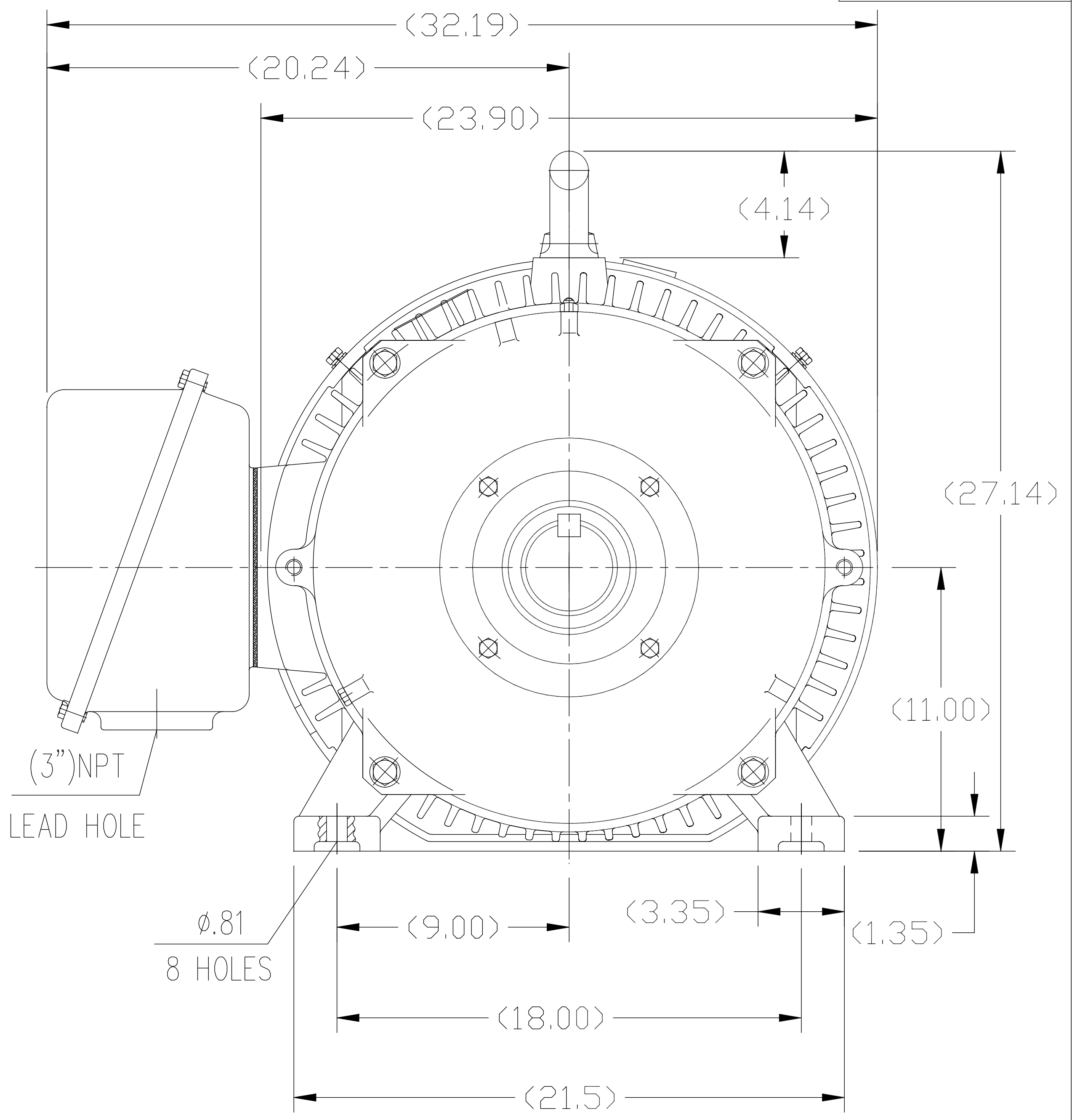
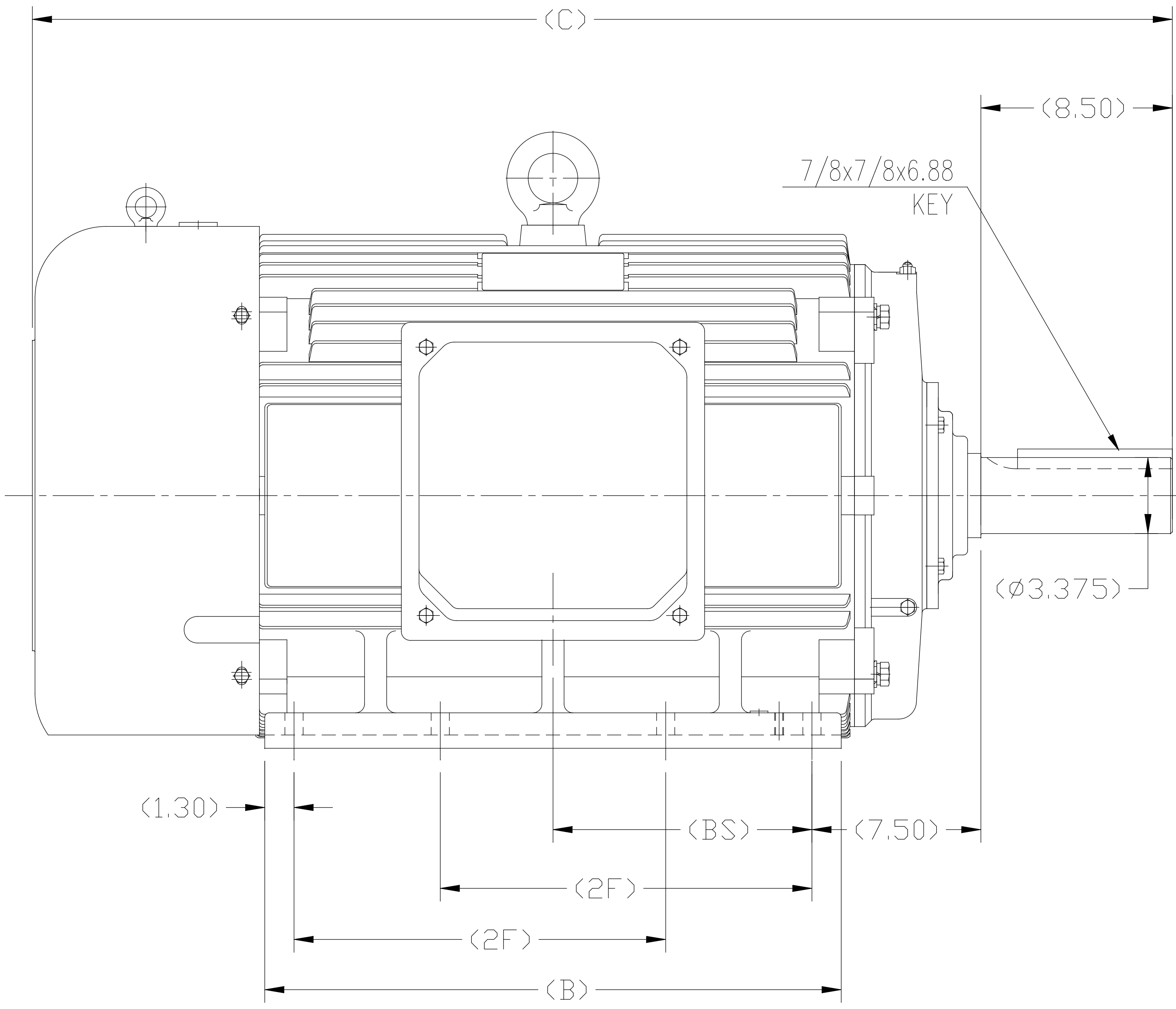
### Nameplate Specifications

Phase	3	Output HP	125 & 100 Hp
Output KW	93.0 & 75.0 kW	Voltage	460 & 380 V
Speed	1188 & 988 rpm	Service Factor	1.15 & 1.15
Frame	445T	Enclosure	Totally Enclosed Fan Cooled
Thermal Protection	No Protection	Efficiency	95 & 95 %
Ambient Temperature	40 °C	Frequency	60 & 50 Hz
Current	142 & 138 A	Power Factor	86
Duty	Continuous	Insulation Class	F
Design Code	B	KVA Code	G
Drive End Bearing Size	6319	Opp Drive End Bearing Size	6317
UL	Recognized	CSA	Y
CE	N	IP Code	43
Number of Speeds	1		

### Technical Specifications

Electrical Type	Squirrel Cage Inverter Rated	Starting Method	Part Wdg Start Or Inverter
Poles	6	Rotation	Reversible
Resistance Main	.035 Ohms	Mounting	Rigid Base
Motor Orientation	Horizontal	Drive End Bearing	Ball
Opp Drive End Bearing	Ball	Frame Material	Cast Iron
Shaft Type	T	Assembly/Box Mounting	F1/F2 CAPABLE
Inverter Load	CONSTANT 2:1		
Outline Drawing	SS620287-445T	Connection Drawing	A-EE7341C-LE

This is an uncontrolled document once printed or downloaded and is subject to change without notice. Date Created:06/22/2023



- 1. THIS MOTOR IS NOT DUAL DRILLED FOR 444T/445T OR 447T/449T
- 2. THIS MOTOR IS DRILLED FOR F1/F2 CAPABILITY

444T	50.79	25.60	14.50	11.50
445T	50.79	25.60	16.50	11.50
447T	55.91	30.70	20.00	14.06
449T	55.91	30.70	25.00	---
Frame	C	B	2F	BS

				TOLERANCES UNLESS SPECIFIED		<div>REGAL</div> REGAL - BELOIT CORPORATION		DRAWN ZYH 02-20-2010	
				DEC.	INCHES			CHK HZJ 02-20-2010	
				.X	±.1			APPD CL 02-20-2010	
F	UPDATED DRAWING PER MARK-UP ECD-0108274	WGJ 7-10-16	EMH	.XX	±.03	TITLE OUTLINE 444/445/447/449T FR-TEFC-CAST IRON		SCALE 1=6	
B	ADDED 'BS' DIM. UPDATED TITLE BLOCK ECD-0048910	RFH 4-7-14	EH	.XXX	±.005			REF	
A	2 leads hole change to 1	CL 2010-9-8		.XXXX	±.0005	MAT'L.		FMF	HWADA
NO.	REVISION	BY & DATE	CHK	ANG	±1/2°	FINISH		PREV	
THIS DRAWING IN DESIGN AND DETAIL IS OUR PROPERTY AND MUST NOT BE USED EXCEPT IN CONNECTION WITH OUR WORK ALL RIGHTS OF DESIGN AND INVENTION ARE RESERVED THIS IS AN ELECTRONICALLY GENERATED DOCUMENT - DO NOT SCALE THIS PRINT			RFP		CAD FILE SS620287		SIZE	DRAWING NO.	REV.
			DIST				B	SS620287	F

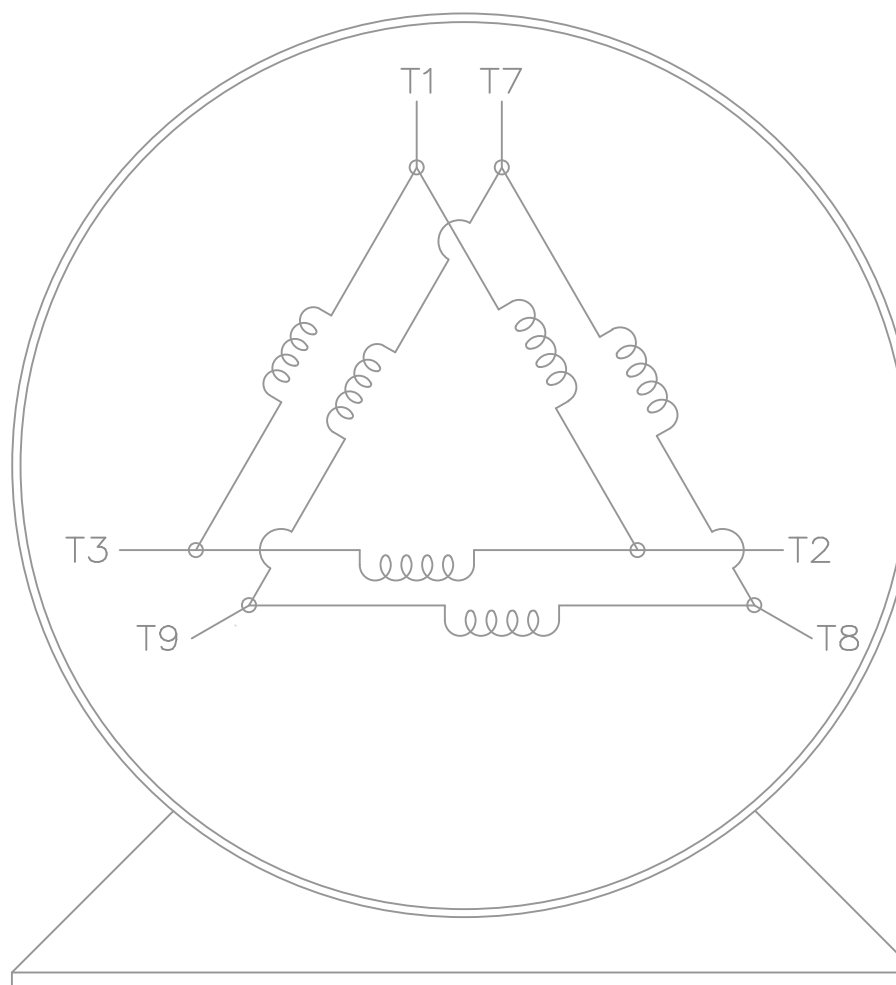
# THREE PHASE — PART WINDING START DELTA — 6 LEADS

## START


CONNECT T1 TO LINE 1  
CONNECT T2 TO LINE 2  
CONNECT T3 TO LINE 3  
T7-T8-T9 OPEN

## RUN

CONNECT T1&T7 TO LINE 1  
CONNECT T2&T8 TO LINE 2  
CONNECT T3&T9 TO LINE 3



VIEW OF TERMINAL END

				TOLERANCES UNLESS SPECIFIED		 ELECTRIC MOTORS GEARMOTORS AND DRIVES	DRAWN KL 07-23-2002						
				DEC.	INCHES		CHK DJK 07-23-2002						
				.X	± -		APPD EAB 07-23-2002						
				.XX	± -		SCALE 1=1						
				.XXX	± -	TITLE CONNECTION DIAGRAM 3ø - 6 LEADS	REF						
1	NEW DRAWING	MU42766	KL 07-23-2002	.XXXX	± -	MAT'L.	FMF						
NO.	REVISION		BY & DATE	CHK	ANG	± -	FINISH			PREV			
THIS DRAWING IN DESIGN AND DETAIL IS OUR PROPERTY AND MUST NOT BE USED EXCEPT IN CONNECTION WITH OUR WORK ALL RIGHTS OF DESIGN AND INVENTION ARE RESERVED THIS IS AN ELECTRONICALLY GENERATED DOCUMENT - DO NOT SCALE THIS PRINT				RFP		CAD FILE EE7341C-LE			SIZE	DRAWING NO.	PAGE	OF	REV.
				DIST WA-LB-LE					A	EE7341C-LE			1