

# PRODUCT INFORMATION PACKET



Model No: 199024.00

Catalog No: 199024.00

Obsolete,

by B199024.00..30HP..3600RPM.286TS.TEFC.230/460V.3PH.60HZ.CONT.40C.1.15SF.RIGID.....GENERAL PURPOSE

Regal and Leeson are trademarks of Regal Rexnord Corporation or one of its affiliated companies.

©2023 Regal Rexnord Corporation, All Rights Reserved. MC017097E





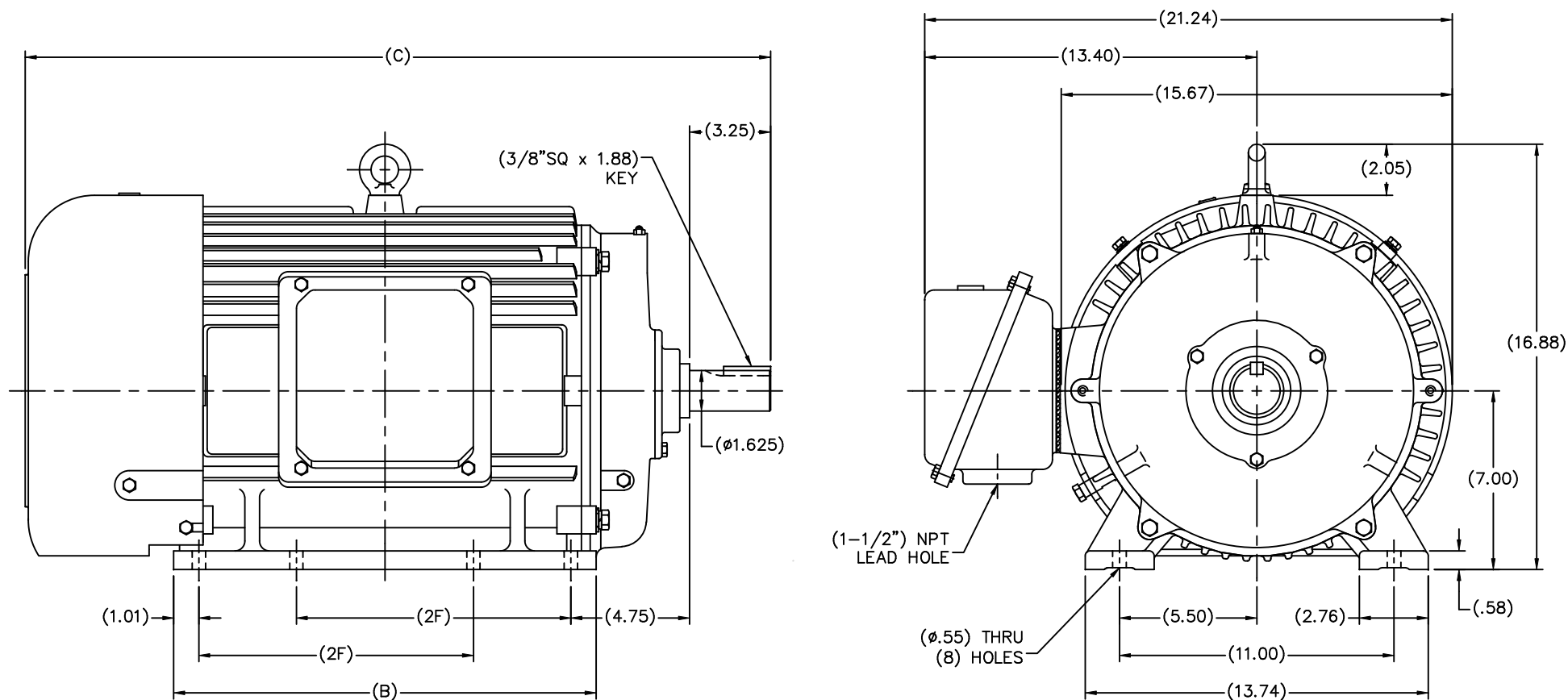
### Nameplate Specifications

Phase	3	Output HP	30 & 25 Hp
Output KW	22.4 & 18.7 kW	Voltage	230/460 & 190/380 V
Speed	3553 & 2955 rpm	Service Factor	1.15 & 1.15
Frame	286TS	Enclosure	Totally Enclosed Fan Cooled
Thermal Protection	No Protection	Efficiency	91.7 & 91.7 %
Ambient Temperature	40 °C	Frequency	60 & 50 Hz
Current	67/33.5 & 68/34 A	Power Factor	90
Duty	Continuous	Insulation Class	F
Design Code	B	KVA Code	G
Drive End Bearing Size	6211	Opp Drive End Bearing Size	6211
UL	Recognized	CSA	Y
CE	N	IP Code	43
Number of Speeds	1		

### Technical Specifications

Electrical Type	Squirrel Cage Inverter Rated	Starting Method	Line Or Inverter
Poles	2	Rotation	Reversible
Resistance Main	.25 Ohms	Mounting	Rigid Base
Motor Orientation	Horizontal	Drive End Bearing	Ball
Opp Drive End Bearing	Ball	Frame Material	Cast Iron
Shaft Type	TS	Assembly/Box Mounting	F1/F2 CAPABLE
Inverter Load	CONSTANT 20:1		
Outline Drawing	SS620246-286TS	Connection Drawing	EE7308AA-LE


This is an uncontrolled document once printed or downloaded and is subject to change without notice. Date Created:06/22/2023

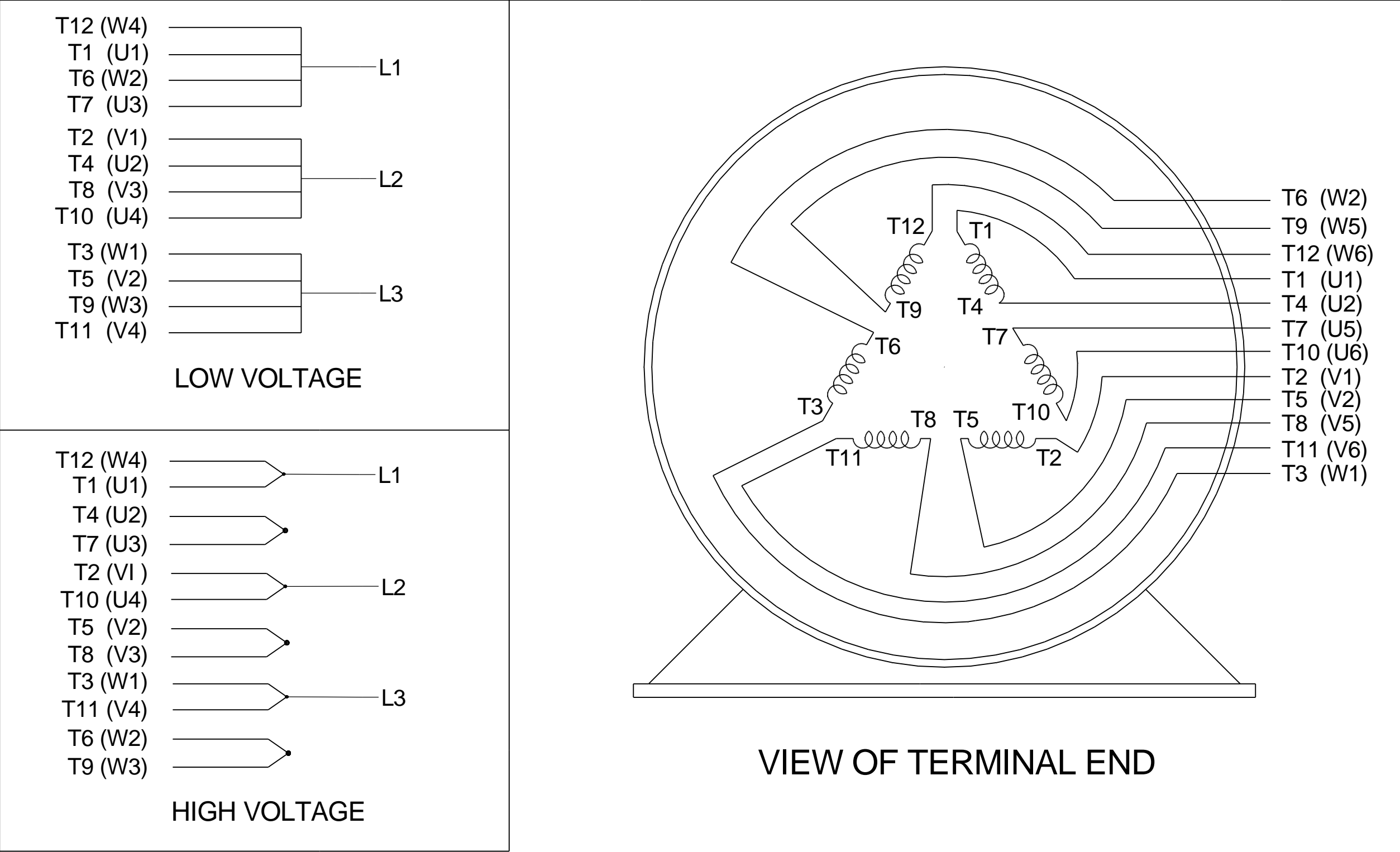


(DIMENSIONS IN TABLE ARE CONSIDERED REFERENCE)

284TS	28.82	15.75	9.50
286TS	30.00	16.93	11.00
FRAME	C	B	2F

(MAY NOT BE DRAWN TO SCALE)

		TOLERANCES UNLESS SPECIFIED			DRAWN MSG 01-12-2010		
		DEC.	INCHES		CHK	MJS	01-13-2010
		.X	±.1		APPD	SB	01-13-2010
		.XX	±.03		SCALE 1=4		
		.XXX	±.005		REF		
		.XXXX	±.0005	MAT'L	FMF	HUADA	
NO.	REVISION	BY & DATE	CHK	ANG	±7'30"	FINISH	PREV
THIS DRAWING IN DESIGN AND DETAIL IS OUR PROPERTY AND MUST NOT BE USED EXCEPT IN CONNECTION WITH OUR WORK. ALL RIGHTS OF DESIGN AND INVENTION ARE RESERVED. THIS IS AN ELECTRONICALLY GENERATED DOCUMENT - DO NOT SCALE THIS PRINT				RFP	01-14-2010	CAD FILE SS620246	SIZE B DRAWING NO. SS620246 PAGE OF REV.
				DIST			



DRAWING REVISION C		REVISION BY D.FROEHLICH	DATE 02-09-2015	TOLERANCES UNLESS OTHERWISE SPECIFIED: <div><div>DEC.</div><div>INCH</div><div>mm</div><div>ANGLE</div></div> <div><div>.X</div><div>±0.1</div><div>[±2.5]</div><div>±7° 30"</div></div> <div><div>.XX</div><div>±0.02</div><div>[±0.51]</div><div></div></div> <div><div>.XXX</div><div>±0.005</div><div>[±0.127]</div><div></div></div> <div><div>.XXXX</div><div>±0.0005</div><div>[±0.0127]</div><div></div></div> <div>REMOVE BURRS &amp; BREAK SHARP EDGES: .003/.015 [0.076/.381] CORNER FILLETS: .02 [0.51] MACHINED SURFACES: 200 INCH ✓ mm ✓ mm SHOWN IN [BRACKETS]</div>	DRAWN BY HV		<div><div><div>REGAL</div><div>Regal Beloit America, Inc.</div></div></div>		
ECO ECO-0070906		APPROVED BY MG	DATE 02-09-2015		DATE 06-08-20152				
ECO DESCRIPTION UPDATED IEC CONNECTIONS					APPROVED BY DR		DESCRIPTION CONN DIAGRAM-EXTERNAL 3 PHASE - 2/1 DELTA - 12 LEADS		
COPYRIGHT REGAL BELOIT AMERICA, INC. ALL RIGHTS RESERVED. PROPRIETARY AND CONFIDENTIAL INFORMATION - THIS DOCUMENT IS THE PROPERTY OF REGAL BELOIT AMERICA, INC. ("OWNER") AND CONTAINS OWNER'S PROPRIETARY INFORMATION. ANY PERSON, CORPORATION OR OTHER FIRM RECEIVING IT IS DEEMED, BY RECEIVING IT, TO AGREE THAT IT, AND/OR ANY PART OF IT, SHALL NOT BE DISCLOSED TO ANY PERSON, CORPORATION OR OTHER ENTITY, DUPLICATED, AND/OR USED, EXCEPT AS EXPRESSLY APPROVED IN WRITING IN ADVANCE BY OWNER. THIS DOCUMENT SHALL BE RETURNED TO OWNER UPON REQUEST. IT MAY BE SUBJECT TO CERTAIN RESTRICTIONS UNDER APPLICABLE EXPORT CONTROL LAWS AND REGULATIONS.					DATE 06-11-2012				
					REFERENCE		MATERIAL		PROCESS/FINISH
				THIRD ANGLE PROJECTION		SIZE A		DRAWING NUMBER EE7308AA-LE	SHEET 1 OF 1