

# PRODUCT INFORMATION PACKET



Model No: 199006.00

Catalog No: 199006.00

Ultimate e™ General Purpose Motor, 5 & 3 HP, 3 Ph, 60 & 50 Hz, 230/460 & 190/380 V, 3600 & 3000 RPM,  
184T Frame, TEFC



Regal and Leeson are trademarks of Regal Rexnord Corporation or one of its affiliated companies.

©2023 Regal Rexnord Corporation, All Rights Reserved. MC017097E





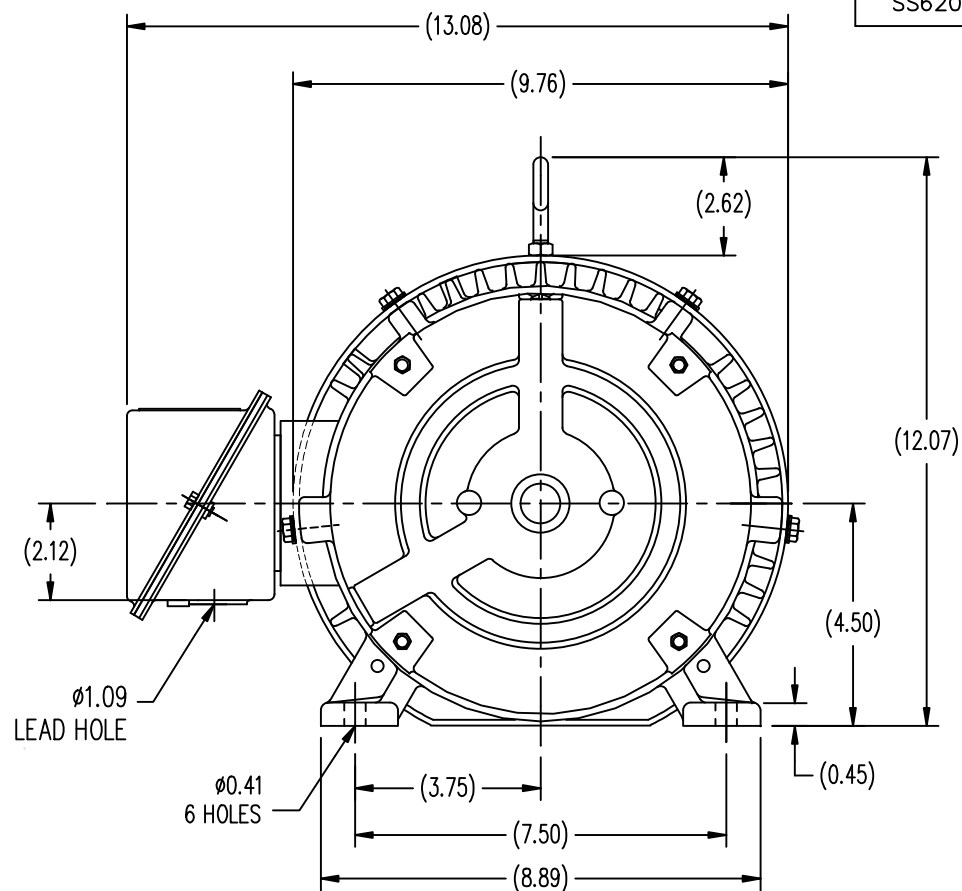
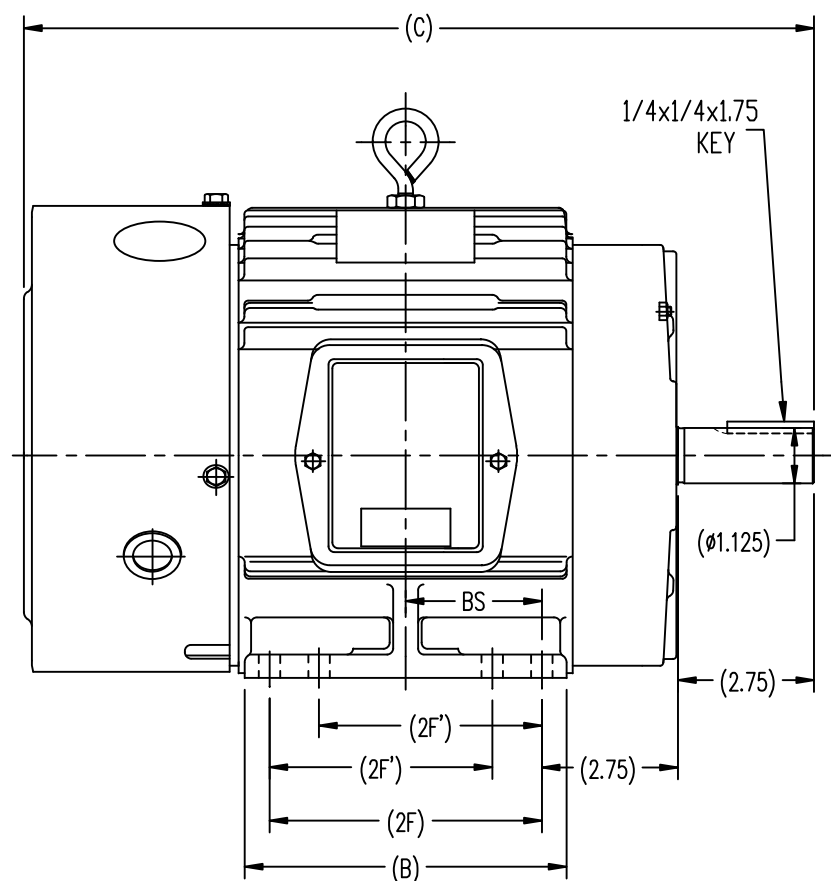
## Nameplate Specifications

Phase	3	Output HP	5 & 3 Hp
Output KW	3.7 & 2.2 kW	Voltage	230/460 & 190/380 V
Speed	3535 & 2955 rpm	Service Factor	1.15 & 1.15
Frame	184T	Enclosure	Totally Enclosed Fan Cooled
Thermal Protection	No Protection	Efficiency	91 & 91 %
Ambient Temperature	40 °C	Frequency	60 & 50 Hz
Current	12/6 & 9/4.5 A	Power Factor	88
Duty	Continuous	Insulation Class	F
Design Code	A	KVA Code	L
Drive End Bearing Size	6206	Opp Drive End Bearing Size	6305
UL	Recognized	CSA	Y
CE	N	IP Code	43
Number of Speeds	1		


## Technical Specifications

Electrical Type	Squirrel Cage Inverter Rated	Starting Method	Line Or Inverter
Poles	2	Rotation	Reversible
Resistance Main	1.98 Ohms	Mounting	Rigid Base
Motor Orientation	Horizontal	Drive End Bearing	Ball
Opp Drive End Bearing	Ball	Frame Material	Cast Iron
Shaft Type	T	Overall Length	15.81 in
Frame Length	6.73 in	Shaft Diameter	1.125 in
Shaft Extension	2.75 in	Assembly/Box Mounting	F1 ONLY
Inverter Load	CONSTANT 20:1		
Connection Drawing	EE7308-LE	Outline Drawing	SS620290-184T



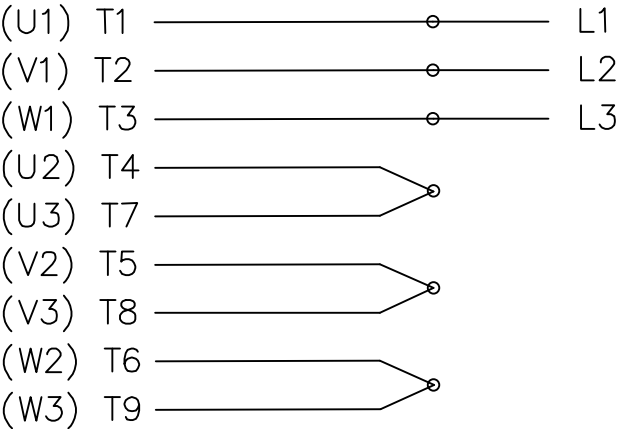


182T	14.80	5.50	4.50	/	2.25
184T	15.81	6.55	5.50	4.50	2.75
FRAME	C	B	2F	2F'	BS

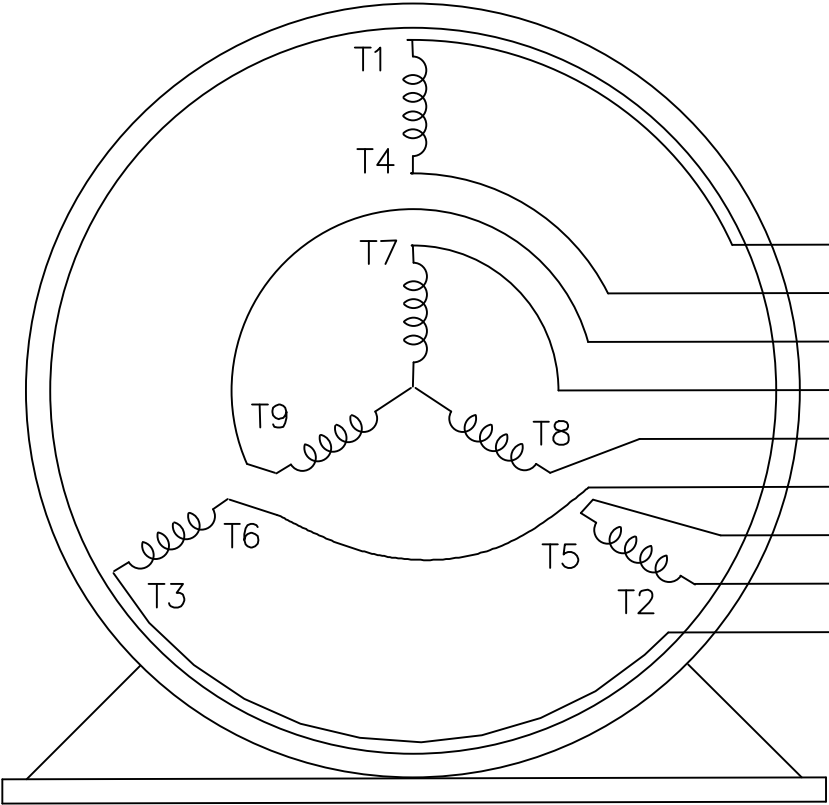
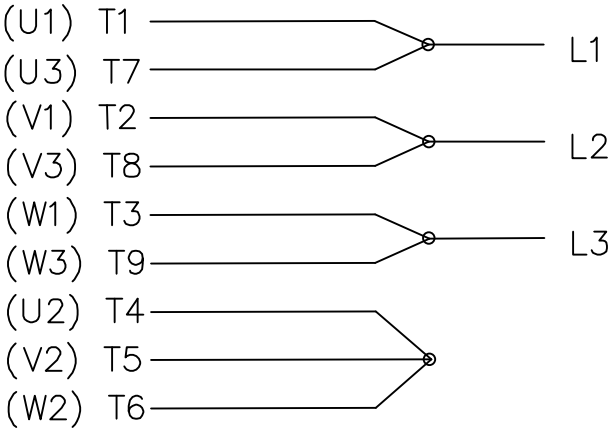
		TOLERANCES UNLESS SPECIFIED		 <b>REGAL-BELOIT CORPORATION</b>	DRAWN HZJ 03-05-2010	
		DEC.	INCHES		CHK	ZYH 03-05-2010
		.X	±.1		APPD	CL 03-05-2010
		.XX	±.03		SCALE	1=2.5
		.XXX	±.005		REF	
		.XXX	±.0005		FMF	HWADA
NO.	REVISION	BY & DATE	CHK	ANG	±1/2-	FINISH
THIS DRAWING IN DESIGN AND DETAIL IS OUR PROPERTY AND MUST NOT BE USED EXCEPT IN CONNECTION WITH OUR WORK. ALL RIGHTS OF DESIGN AND INVENTION ARE RESERVED. THIS IS AN ELECTRONICALLY GENERATED DOCUMENT - DO NOT SCALE THIS PRINT.			RFP		CAD FILE	SS620290
			DIST			
					SIZE	DRAWING NO.
					B	SS620290
					REV.	

THREE PHASE  
DUAL VOLTAGE MOTOR

HIGH VOLTAGE



LOW VOLTAGE




T1 (U1)  
T4 (U2)  
T9 (W3)  
T7 (U3)  
T8 (V3)  
T6 (W2)  
T5 (V2)  
T2 (V1)  
T3 (W1)

VIEW OF TERMINAL END

REF.  
WINDING DIAGRAM

T8Y, T2Y, T2BL, T4BX, T2EC, T2G  
T6BZ, T2B, T6BL, T4AV, T6B, T4B

				TOLERANCES UNLESS SPECIFIED			ELECTRIC MOTORS GEARMOTORS AND DRIVES			DRAWN HLB 04-29-2002			
				DEC.	INCHES					CHK	ML	05-03-2002	
				.X	±.1					APPD	GK	05-03-2002	
				.XX	±.01					SCALE 1=1			
2	ADDED IEC NOTATIONS... (U1), (V1) ETC. (MU105786)	REP 01-11-2012	DR	.XXX	±.005	TITLE CONNECTION DIAGRAM 3Ø - DUAL VOLTAGE MOTOR			REF				
1	NEW DRAWING	HLB 05-03-2002	ML	.XXXX	±.0005	MAT'L.			FMF				
NO.	REVISION	BY & DATE	CHK	ANG	±1/2'	FINISH			PREV				
THIS DRAWING IN DESIGN AND DETAIL IS OUR PROPERTY AND MUST NOT BE USED EXCEPT IN CONNECTION WITH OUR WORK ALL RIGHTS OF DESIGN AND INVENTION ARE RESERVED THIS IS AN ELECTRONICALLY GENERATED DOCUMENT - DO NOT SCALE THIS PRINT				RFP		CAD FILE EE7308-LE			SIZE	DRAWING NO.	PAGE	OF	REV.
				DIST LB-WP					A	EE7308-LE			2



## CERTIFICATION DATA SHEET

1051 CHEYENNE AVE.  
GRAFTON, WI 53024  
PH. 262-377-8810

CATALOG #: 199006.00

CONN. DIAGRAM: EE7308-LE

OUTLINE: SS620290-184T

MOUNTING: F1 ONLY

WINDING #: CHT18420001 1

## TYPICAL MOTOR PERFORMANCE DATA

HP	kW	SYNC. RPM	F.L. RPM	FRAME	ENCLOSURE	KVA CODE	DESIGN
5&3	3.70&2.24	3600	3535&2955	184T	TEFC	L	A

PH	Hz	VOLTS	AMPS	START TYPE	DUTY	INSL	S.F.	AMB°C
3	60/50	230/460&190/380	12/6&9/4.5	LINE OR INVERTER	CONTINUOUS	F3	1.15/1.15	40

FULL LOAD EFF:	91&91	3/4 LOAD EFF:	91	1/2 LOAD EFF:	90.2	GTD. EFF	ELEC. TYPE
FULL LOAD PF:	88&83	3/4 LOAD PF:	83	1/2 LOAD PF:	74	87.5	SQ CAGE INV RATED

F.L. TORQUE	LOCKED ROTOR AMPS	L.R. TORQUE	B.D. TORQUE	F.L. RISE°C
7.5 LB-FT	125 / 62.5	23 LB-FT 306 %	35.5 LB-FT 472 %	40

SOUND PRESSURE @ 3 FT.	SOUND POWER	ROTOR WK^2	MAX. WK^2	SAFE STALL TIME	STARTS / HOUR	APPROX. MOTOR WGT
72 dBA	82 dBA	0.3 LB-FT^2	5 LB-FT^2	15 SEC.	2	115 LBS.

## \*\*\* SUPPLEMENTAL INFORMATION \*\*\*

DE BRACKET TYPE	ODE BRACKET TYPE	MOUNT TYPE	ORIENTATION	SEVERE DUTY	HAZARDOUS LOCATION	DRIP COVER	SCREENS	PAINT
STANDARD	STANDARD	RIGID	HORIZONTAL	FALSE	NONE	FALSE	NONE	BLUE (ENAMEL)

BEARINGS		GREASE	SHAFT TYPE	SPECIAL DE	SPECIAL ODE	SHAFT MATERIAL	FRAME MATERIAL
DE	ODE						
BALL	BALL	POLYREX EM	T	NONE	NONE	AISI 1045 (C-240)	CAST IRON
6206	6305						

THERMO-PROTECTORS				THERMISTORS	CONTROL	SPACE HEATERS
THERMOSTATS	PROTECTORS	WDG RTDs	BRG RTDs			
NONE	NOT	NONE	NONE	NONE	FALSE	NONE VOLTS

\*

N

O

T

E

S

INVERTER TORQUE: CONSTANT 20:1

INV. HP SPEED RANGE: NONE

ENCODER: NONE

NONE NONE

NONE NONE PPR

BRAKE: NONE NONE

NONE P/N NONE

NONE NONE

NONE FT-LB NONE V NONE Hz

## Data Sheet

Date: 1/29/2018

199006.00



Data @ 460 V

## Motor Load Data

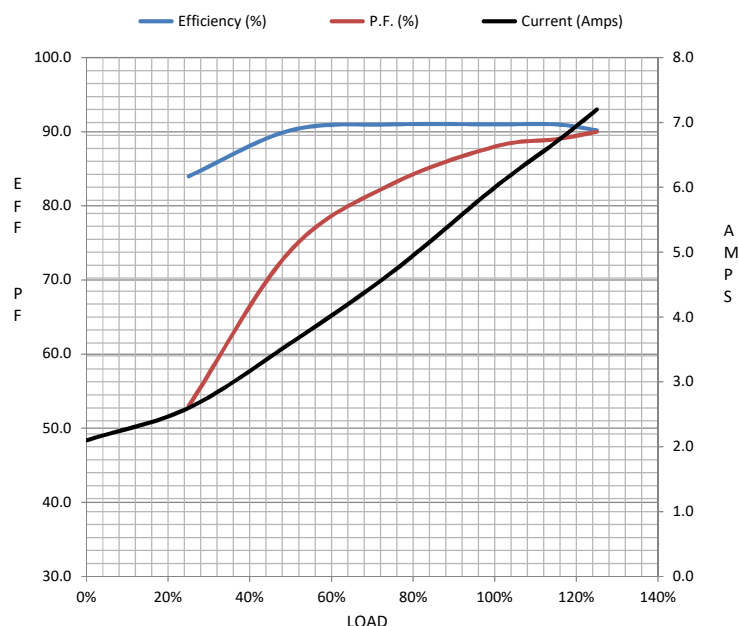
Load	0%	25%	50%	75%	100%	115%	125%	LR	
Current (Amps)	2.10	2.60	3.6	4.7	6.0	6.7	7.2	62.5	
Torque (ft-lb)	0.00	1.85	3.7	5.6	7.5	8.6	9.4	23.0	
RPM	3600	3585	3570	3552	3535	3,525	3518	0	
Efficiency (%)		84.0	90.2	91.0	91.0	91.0	90.2		
P.F. (%)	8.5	53.0	74.0	83.0	88.0	89.0	90.0	51.0	

## Motor Speed Data

	LR	Pull-Up	BD	Rated	Idle
Speed (RPM)	0	1800	2875	3535	3600
Current (Amps)	62.5	55.0	41.5	6.0	2.10
Torque (ft-lb)	23.0	20.0	35.5	7.5	0.00

## Information Block

HP	5.0			
Sync. RPM	3600			
Frame	184			
Enclosure	TEFC			
Construction	TFC			
Voltage	230/460#190/380	V		
Frequency	60	Hz		
Design	A			
LR Code letter	L			
Service Factor	1.15			
Temp Rise @ FL	40	° C		
Duty	CONT			
Ambient	40	° C		
Elevation	1,000	feet		
Rotor/Shaft wk²	0.30	Lb-Ft²		
Ref Wdg	CHT18420001 NONE			
Sound Pressure @ 1M	72	dBA		
VFD Rating	CONSTANT 20:1			
Outline Dwg	SS620290			
Conn. Diag	EE7308-LE			
Additional Specifications:				
0				
0				
EQUIV CKT (OHMS / PHASE)				
R1	R2	X1	X2	Xm
1.1930	0.9370	2.8970	1.5900	128.9360



## Speed - Torque Curve

