

PRODUCT INFORMATION PACKET



Model No: 199003.00

Catalog No: 199003.00

Ultimate e™ General Purpose Motor, 3 & 2 HP, 3 Ph, 60 & 50 Hz, 230/460 & 190/380 V, 3600 & 3000 RPM,
182T Frame, TEFC



Regal and Leeson are trademarks of Regal Rexnord Corporation or one of its affiliated companies.

©2023 Regal Rexnord Corporation, All Rights Reserved. MC017097E



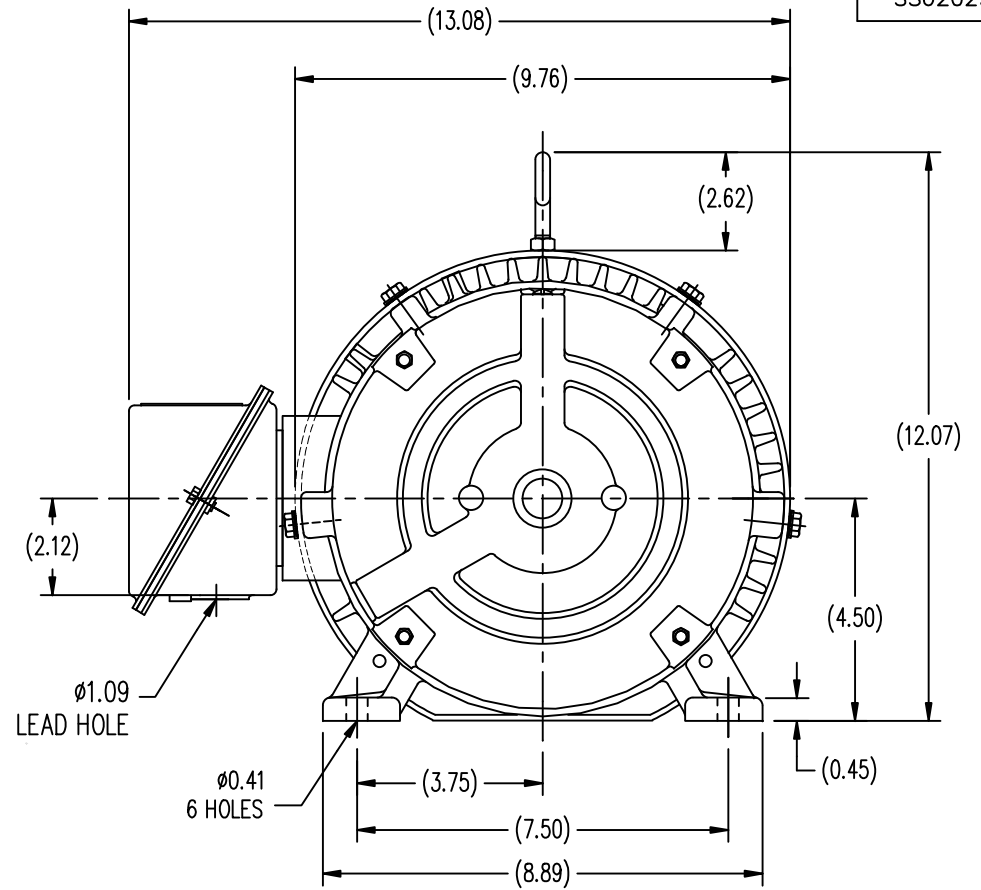
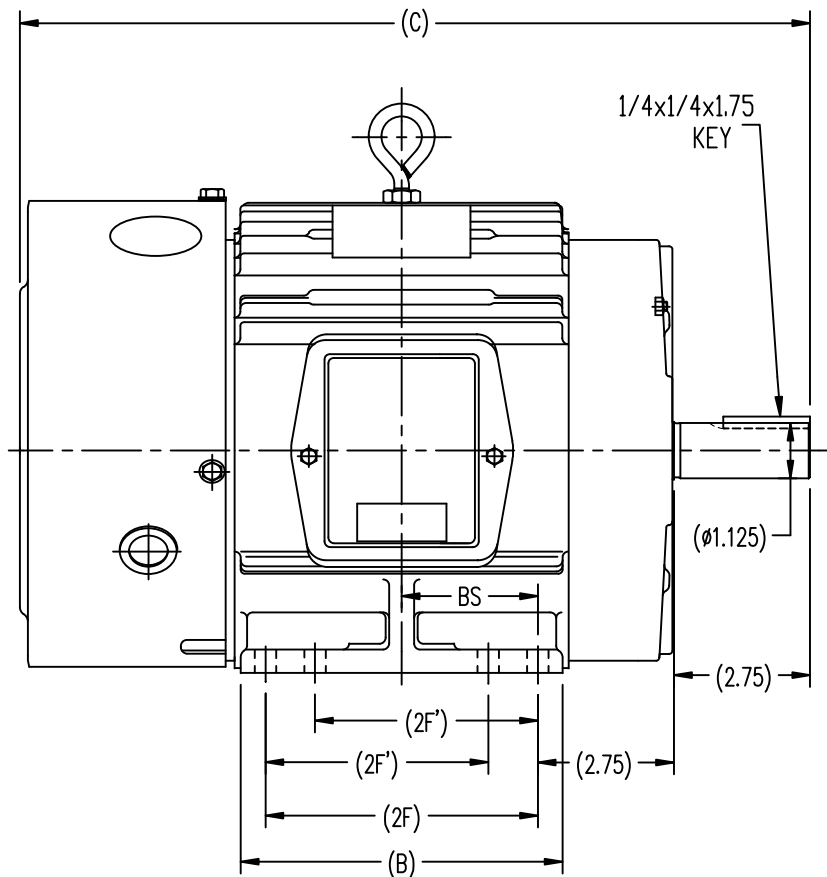


Nameplate Specifications

Phase	3	Output HP	3 & 2 Hp
Output KW	2.2 & 1.5 kW	Voltage	230/460 & 190/380 V
Speed	3535 & 2945 rpm	Service Factor	1.15 & 1.15
Frame	182T	Enclosure	Totally Enclosed Fan Cooled
Thermal Protection	No Protection	Efficiency	86.5 & 84 %
Ambient Temperature	40 °C	Frequency	60 & 50 Hz
Current	7.6/3.8 & 6.4/3.2 A	Power Factor	85
Duty	Continuous	Insulation Class	F
Design Code	A	KVA Code	L
Drive End Bearing Size	6206	Opp Drive End Bearing Size	6205
UL	Recognized	CSA	Y
CE	N	IP Code	43
Number of Speeds	1		

Technical Specifications

Electrical Type	Squirrel Cage Inverter Rated	Starting Method	Line Or Inverter
Poles	2	Rotation	Reversible
Resistance Main	3.45 Ohms	Mounting	Rigid Base
Motor Orientation	Horizontal	Drive End Bearing	Ball
Opp Drive End Bearing	Ball	Frame Material	Cast Iron
Shaft Type	T	Overall Length	14.80 in
Frame Length	5.74 in	Shaft Diameter	1.125 in
Shaft Extension	2.75 in	Assembly/Box Mounting	F1 ONLY
Inverter Load	CONSTANT 20:1		
Outline Drawing	SS620290-182T	Connection Drawing	A-EE7308-LE

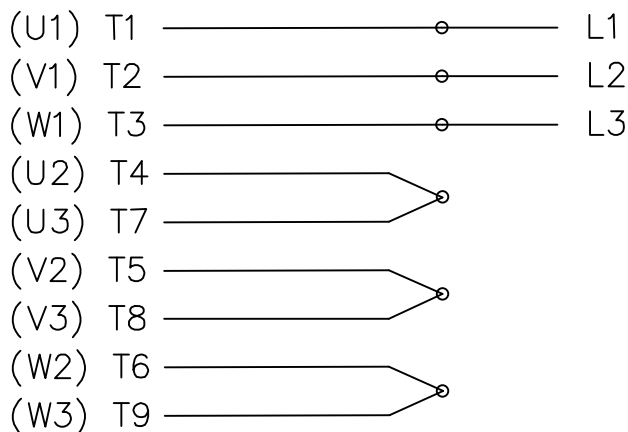


182T	14.80	5.50	4.50	/	2.25
184T	15.81	6.55	5.50	4.50	2.75
FRAME	C	B	2F	2F'	BS

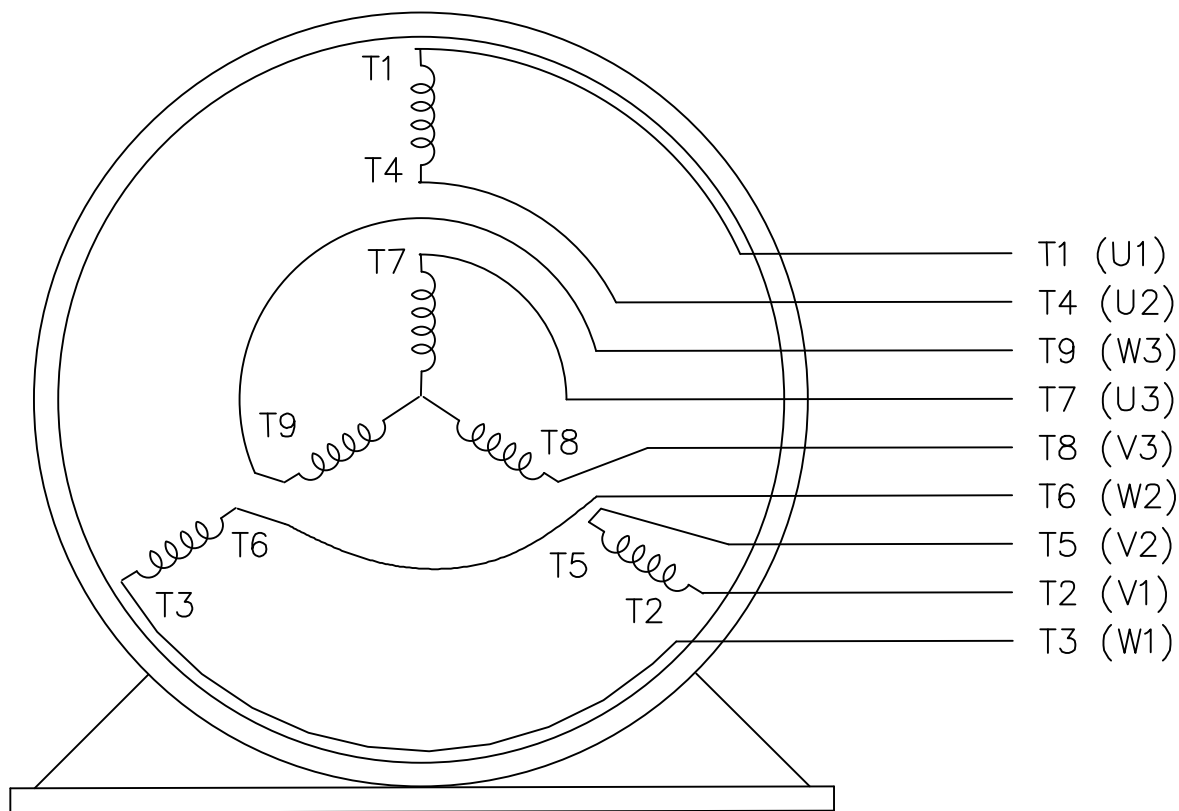
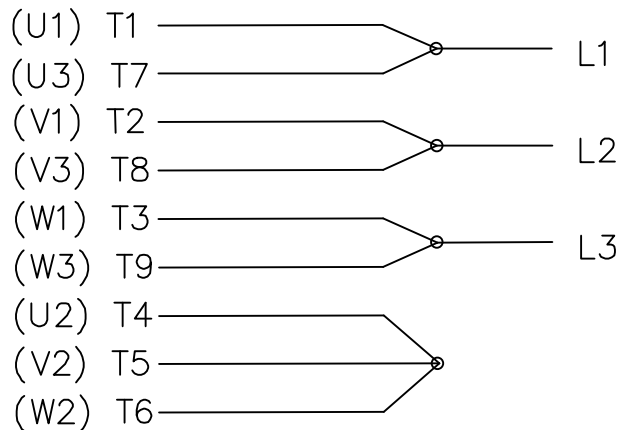
		TOLERANCES UNLESS SPECIFIED		REGAL-BELOIT CORPORATION		DRAWN HZJ 03-05-2010	
		DEC.	INCHES	REGAL-BELOIT CORPORATION		CHK ZYH 03-05-2010	
		.X	±.1	TITLE		APPD CL 03-05-2010	
		.XX	±.03	182/184T FR TEFC-CAST IRON		SCALE 1=2.5	
		.XXX	±.005	MAT'L		REF	
		.XXXX	±.0005	FINISH		FMF HWADA	
NO.	REVISION	BY & DATE	CHK	ANG	±1/2-	PREV	
THIS DRAWING IN DESIGN AND DETAIL IS OUR PROPERTY AND MUST NOT BE USED EXCEPT IN CONNECTION WITH OUR WORK. ALL RIGHTS OF DESIGN AND INVENTION ARE RESERVED. THIS IS AN ELECTRONICALLY GENERATED DOCUMENT - DO NOT SCALE THIS PRINT				RFP	CAD FILE	SS620290	SIZE B
				DIST		DRAWING NO.	REV.
						SS620290	

THREE PHASE DUAL VOLTAGE MOTOR

HIGH VOLTAGE



LOW VOLTAGE




- T1 (U1)
- T4 (U2)
- T9 (W3)
- T7 (U3)
- T8 (V3)
- T6 (W2)
- T5 (V2)
- T2 (V1)
- T3 (W1)

VIEW OF TERMINAL END

REF.
WINDING DIAGRAM

T8Y, T2Y, T2BL, T4BX, T2EC, T2G
T6BZ, T2B, T6BL, T4AV, T6B, T4B

				TOLERANCES UNLESS SPECIFIED		 ELECTRIC MOTORS GEARMOTORS AND DRIVES	DRAWN HLB 04-29-2002		
				DEC.	INCHES		CHK	ML 05-03-2002	
				.X	±.1		APPD	GK 05-03-2002	
				.XX	±.01		SCALE 1=1		
2	ADDED IEC NOTATIONS... (U1), (V1) ETC. (MU105786)	REP 01-11-2012	DR	.XXX	±.005	TITLE CONNECTION DIAGRAM 3Ø - DUAL VOLTAGE MOTOR		REF	
1	NEW DRAWING	HLB 05-03-2002	ML	.XXXX	±.0005	MAT'L.		FMF	
NO.	REVISION	BY & DATE	CHK	ANG	±1/2'	FINISH		PREV	
THIS DRAWING IN DESIGN AND DETAIL IS OUR PROPERTY AND MUST NOT BE USED EXCEPT IN CONNECTION WITH OUR WORK ALL RIGHTS OF DESIGN AND INVENTION ARE RESERVED THIS IS AN ELECTRONICALLY GENERATED DOCUMENT - DO NOT SCALE THIS PRINT				RFP	CAD FILE EE7308-LE		SIZE	DRAWING NO. PAGE OF	REV.
				DIST	LB-WP	A	EE7308-LE	2	

Data Sheet

Date: 2/1/2018

199003.00



Data @ **460 V**

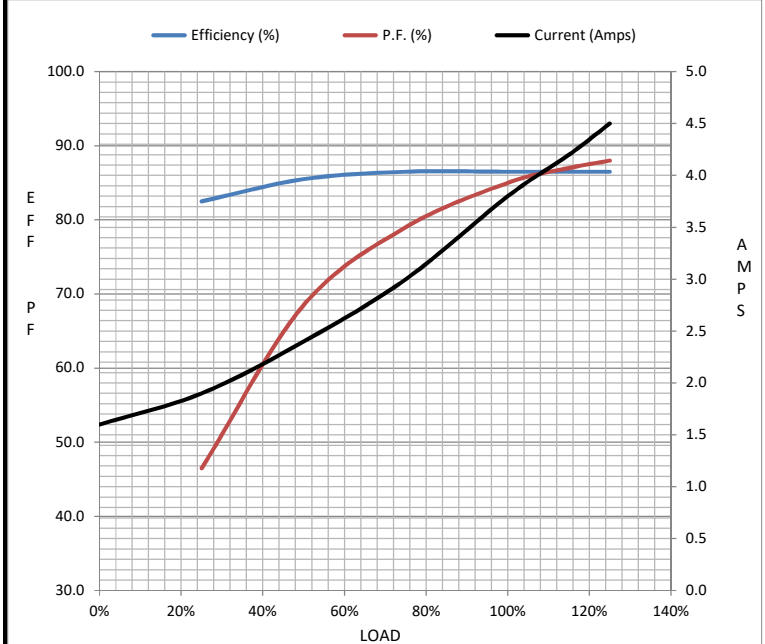
Motor Load Data

Load	0%	25%	50%	75%	100%	115%	125%	LR
Current (Amps)	1.60	1.90	2.40	3.0	3.8	4.2	4.5	38.0
Torque (ft-lb)	0.00	1.10	2.20	3.3	4.5	5.2	5.6	13.5
RPM	3600	3585	3570	3555	3535	3,525	3520	0
Efficiency (%)		82.5	85.5	86.5	86.5	86.5	86.5	
P.F. (%)	8.0	46.5	68.5	79.0	85.0	87.0	88.0	49.0

Motor Speed Data

	LR	Pull-Up	BD	Rated	Idle
Speed (RPM)	0	1800	2850	3535	3600
Current (Amps)	38.0	30.0	24.5	3.8	1.60
Torque (ft-lb)	13.5	10.0	22.5	4.5	0.00

Information Block				
HP	3.0			
Sync. RPM	3600			
Frame	182			
Enclosure	TEFC			
Construction	TFC			
Voltage	230/460#190/380 V			
Frequency	60 Hz			
Design	A			
LR Code letter	L			
Service Factor	1.15			
Temp Rise @ FL	25 °C			
Duty	CONT			
Ambient	40 °C			
Elevation	1,000 feet			
Rotor/Shaft wk ²	0.20 Lb-Ft ²			
Ref Wdg	CHT18220001 NONE			
Sound Pressure @ 1M	72 dBA			
VFD Rating	CONSTANT 20:1			
Outline Dwg	B-SS620290			
Conn. Diag	A-EE7308-LE			
Additional Specifications:				
0				
0				
EQUIV CKT (OHMS / PHASE)				
R1	R2	X1	X2	Xm
2.0810	1.4660	4.7300	2.1290	174.5370



Speed - Torque Curve

