

PRODUCT INFORMATION PACKET



Model No: 194230.00

Catalog No: 194230.00

Obsolete Replaced by B194230.00..30HP..1800RPM.286T.TEFC.230/460V.3PH.60HZ.CONT.40C.1.15SF.RIGID...
...ROLLER BRGS....



Regal and Leeson are trademarks of Regal Rexnord Corporation or one of its affiliated companies.

©2023 Regal Rexnord Corporation, All Rights Reserved. MC017097E





Nameplate Specifications

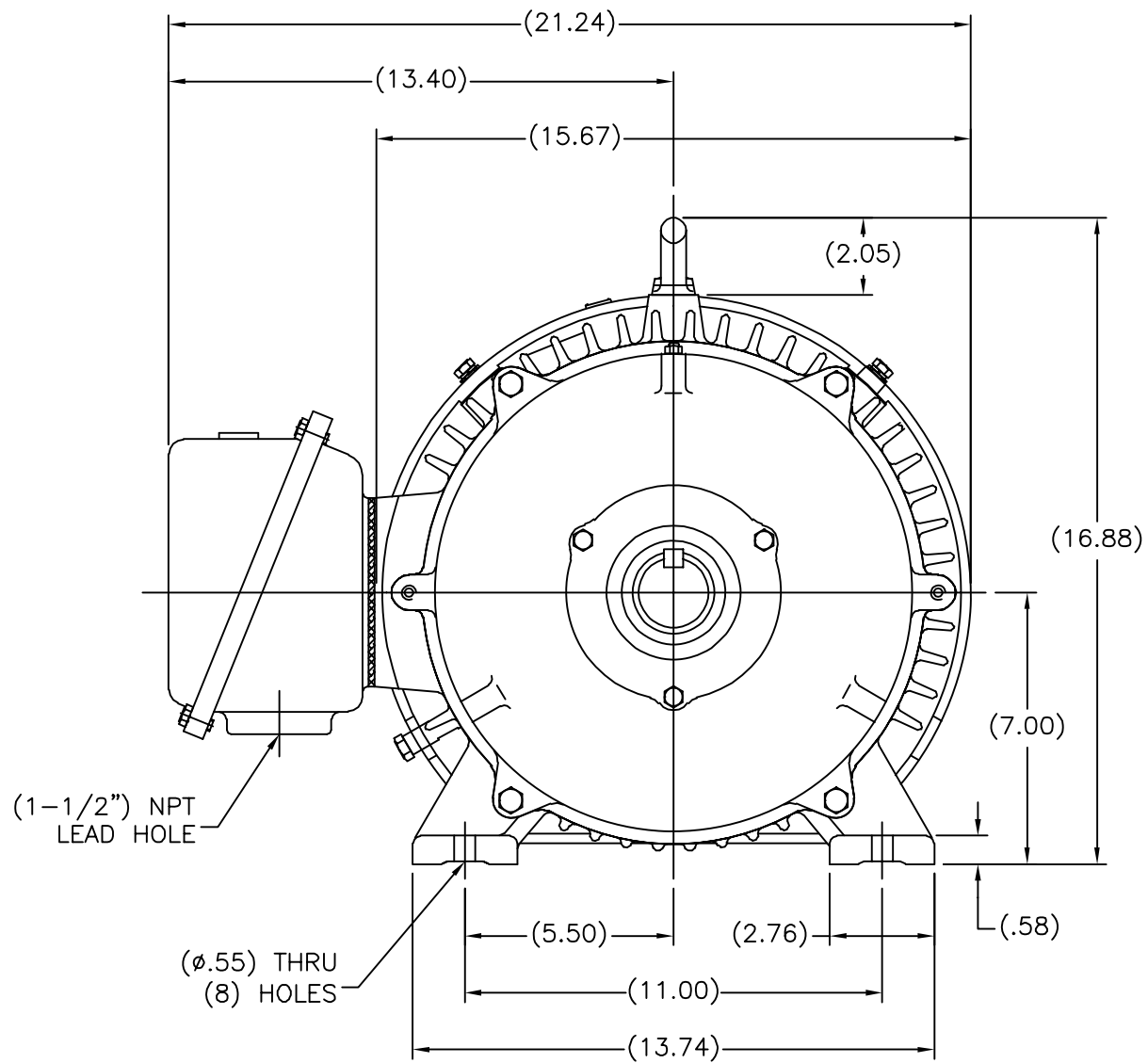
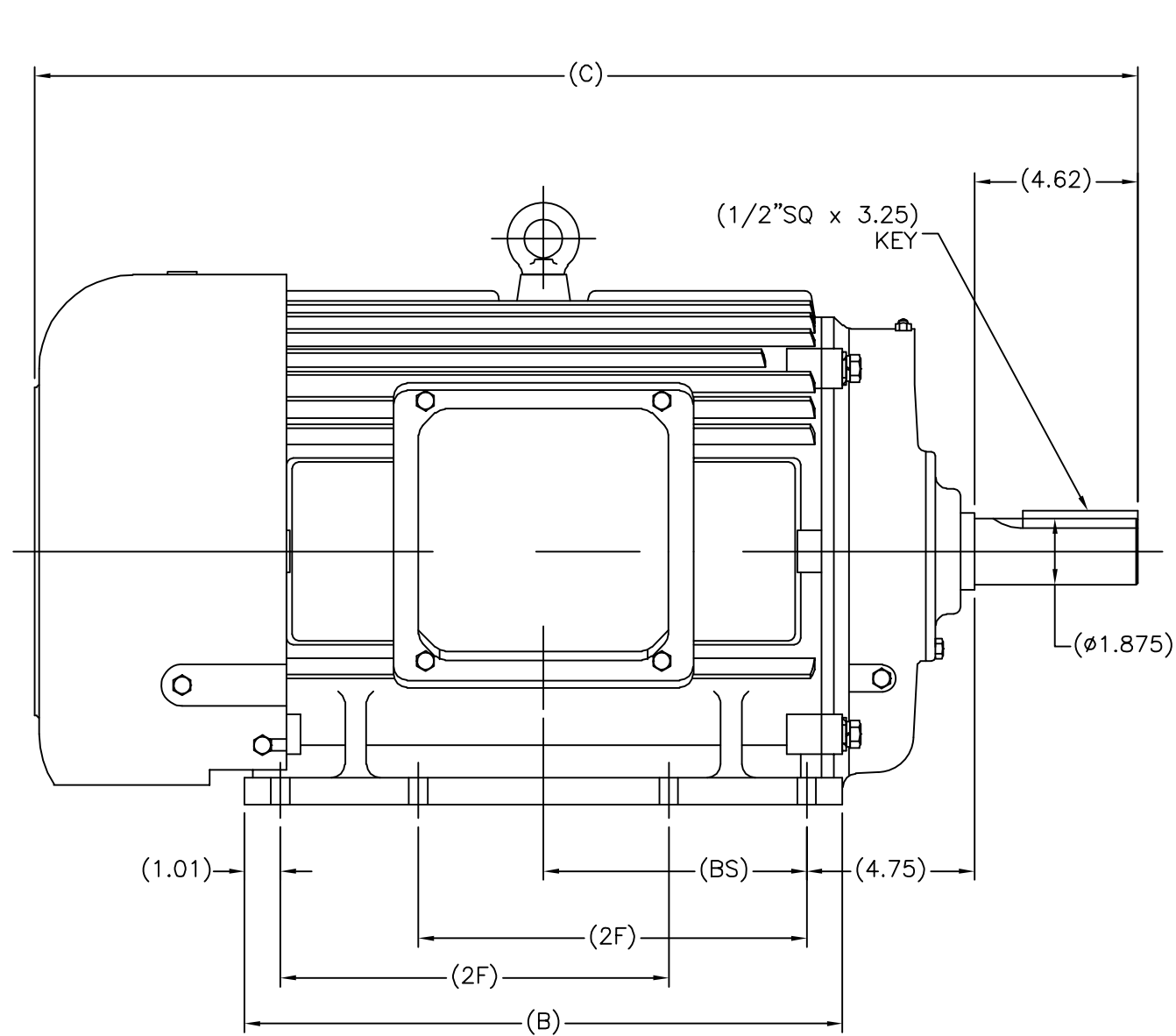
Phase	3	Output HP	30 & 25 Hp
Output KW	22.4 & 18.7 kW	Voltage	230/460 & 190/380 V
Speed	1775 & 1475 rpm	Service Factor	1.15 & 1.15
Frame	286T	Enclosure	Totally Enclosed Fan Cooled
Thermal Protection	No Protection	Efficiency	93.6 & 93 %
Ambient Temperature	40 °C	Frequency	60 & 50 Hz
Current	73/36.5 & 74/37 A	Power Factor	82
Duty	Continuous	Insulation Class	F
Design Code	B	KVA Code	G
Drive End Bearing Size	NU311	Opp Drive End Bearing Size	6210
UL	Recognized	CSA	Y
CE	Y	IP Code	43
Number of Speeds	1		

Technical Specifications

Electrical Type	Squirrel Cage Inverter Rated	Starting Method	Line Or Inverter
Poles	4	Rotation	Reversible
Resistance Main	.215 Ohms	Mounting	Rigid Base
Motor Orientation	Horizontal	Drive End Bearing	Roller
Opp Drive End Bearing	Ball	Frame Material	Cast Iron
Shaft Type	T	Assembly/Box Mounting	F1/F2 CAPABLE
Inverter Load	CONSTANT 20:1		
Outline Drawing	SS620245-286T	Connection Drawing	A-EE7308K-LE

This is an uncontrolled document once printed or downloaded and is subject to change without notice. Date Created:06/22/2023


SS620245



(MAY NOT BE DRAWN TO SCALE)

(DIMENSIONS IN TABLE ARE CONSIDERED REFERENCE)


284T	30.16	15.75	9.50	6.86
286T	31.34	16.93	11.00	7.45
FRAME	C	B	2F	BS

					TOLERANCES UNLESS SPECIFIED		 REGAL-BELOIT CORPORATION			DRAWN MSG 01-12-2010			
					DEC.	INCHES				CHK MJS 01-13-2010			
					.X	±.1				APPD SB 01-13-2010			
					.XX	±.03	TITLE OUTLINE 280T FR. — TEFC			SCALE 1=4			
					.XXX	±.005				REF			
1	ADDED 'BS' DIM. UPDATED TITLE BLOCK ECO-0048910		RFH 04/07/2014	EH	.XXXX	±.0005	MAT'L.			FMF			
NO.	REVISION		BY & DATE	CHK	ANG	±7'30"	FINISH			PREV			
THIS DRAWING IN DESIGN AND DETAIL IS OUR PROPERTY AND MUST NOT BE USED EXCEPT IN CONNECTION WITH OUR WORK ALL RIGHTS OF DESIGN AND INVENTION ARE RESERVED THIS IS AN ELECTRONICALLY GENERATED DOCUMENT — DO NOT SCALE THIS PRINT				RFP 01-14-2010		CAD FILE SS620245				SIZE	DRAWING NO.	PAGE OF	REV.
				DIST						B	SS620245		1

THIS DRAWING IN DESIGN AND DETAIL IS OUR PROPERTY AND MUST NOT BE USED EXCEPT IN CONNECTION WITH OUR WORK. ALL RIGHTS OF DESIGN AND INVENTION ARE RESERVED. THIS IS AN ELECTRONICALLY GENERATED DOCUMENT - DO NOT SCALE THIS PRINT.

LOW VOLTAGEHIGH VOLTAGE

VIEW OF TERMINAL END

				TOLERANCES UNLESS SPECIFIED		 ELECTRIC MOTORS GEARMOTORS AND DRIVES	DRAWN KJC 01-27-2003			
				DEC.	INCHES		CHK ML 01-28-2003			
				.X	±.1		APPD TB 01-28-2003			
				.XX	±.02	TITLE CONNECTION DIAGRAM DELTA CONN. - 3Ø - 9 LEADS	SCALE 1.5=1			
				.XXX	±.005		REF			
01	NEW DRAWING CN36099	KJC 01-28-2003	TB	.XXXX	±.0005	MAT'L.	FMF			
NO.	REVISION	BY & DATE	CHK	ANG	±7'30"	FINISH	PREV			
THIS DRAWING IN DESIGN AND DETAIL IS OUR PROPERTY AND MUST NOT BE USED EXCEPT IN CONNECTION WITH OUR WORK ALL RIGHTS OF DESIGN AND INVENTION ARE RESERVED THIS IS AN ELECTRONICALLY GENERATED DOCUMENT - DO NOT SCALE THIS PRINT				RFP	CAD FILE EE7308K-LE		SIZE	DRAWING NO.	PAGE	OF
				DIST WP			A	EE7308K-LE		01



CERTIFICATION DATA SHEET

1051 CHEYENNE AVE.
GRAFTON, WI 53024
PH. 262-377-8810

CONN. DIAGRAM: A-EE7308K-LE

CATALOG #: 194230.00

OUTLINE: SS620245-286T

MOUNTING: F1/F2 CAPABLE

WINDING #: CHT28640003 2

TYPICAL MOTOR PERFORMANCE DATA

HP	kW	SYNC. RPM	F.L. RPM	FRAME	ENCLOSURE	KVA CODE	DESIGN
30&25	22.4&18.7	1800	1775&1475	286T	TEFC	G	B

PH	Hz	VOLTS	AMPS	START TYPE	DUTY	INSL	S.F.	AMB°C
3	60/50	230/460&190/380	73/36.5&74/37	LINE OR INVERTER	CONTINUOUS	F7	1.15/1.15	40

FULL LOAD EFF:	93.6&93	3/4 LOAD EFF:	93.6	1/2 LOAD EFF:	93	GTD. EFF	ELEC. TYPE
FULL LOAD PF:	82&82	3/4 LOAD PF:	77	1/2 LOAD PF:	68	93	SQ CAGE INV RATED

F.L. TORQUE	LOCKED ROTOR AMPS	L.R. TORQUE	B.D. TORQUE	F.L. RISE°C
88.5 LB-FT	430 / 215	170 LB-FT 192 %	212 LB-FT 240 %	60

SOUND PRESSURE @ 3 FT.	SOUND POWER	ROTOR WK^2	MAX. WK^2	SAFE STALL TIME	STARTS / HOUR	APPROX. MOTOR WGT
68 dBA	78 dBA	5.7 LB-FT^2	225 LB-FT^2	20 SEC.	2	600 LBS.

*** SUPPLEMENTAL INFORMATION ***

DE BRACKET TYPE	ODE BRACKET TYPE	MOUNT TYPE	ORIENTATION	SEVERE DUTY	HAZARDOUS LOCATION	DRIP COVER	SCREENS	PAINT
STANDARD	STANDARD	RIGID	HORIZONTAL	FALSE	NONE	FALSE	NONE	BLUE (ENAMEL)

BEARINGS		GREASE	SHAFT TYPE	SPECIAL DE	SPECIAL ODE	SHAFT MATERIAL	FRAME MATERIAL
DE	ODE						
ROLLER	BALL	POLYREX EM	T	NONE	NONE	AISI 1045 (C-240)	CAST IRON
NU311	6210						

THERMO-PROTECTORS				THERMISTORS	CONTROL	SPACE HEATERS
THERMOSTATS	PROTECTORS	WDG RTDs	BRG RTDs			
NONE	NOT	NONE	NONE	NONE	FALSE	NONE VOLTS

*

N

O

T

E

S

INVERTER TORQUE: CONSTANT 20:1

INV. HP SPEED RANGE: NONE

ENCODER: NONE

NONE NONE

NONE NONE PPR

BRAKE: NONE NONE

NONE P/N NONE

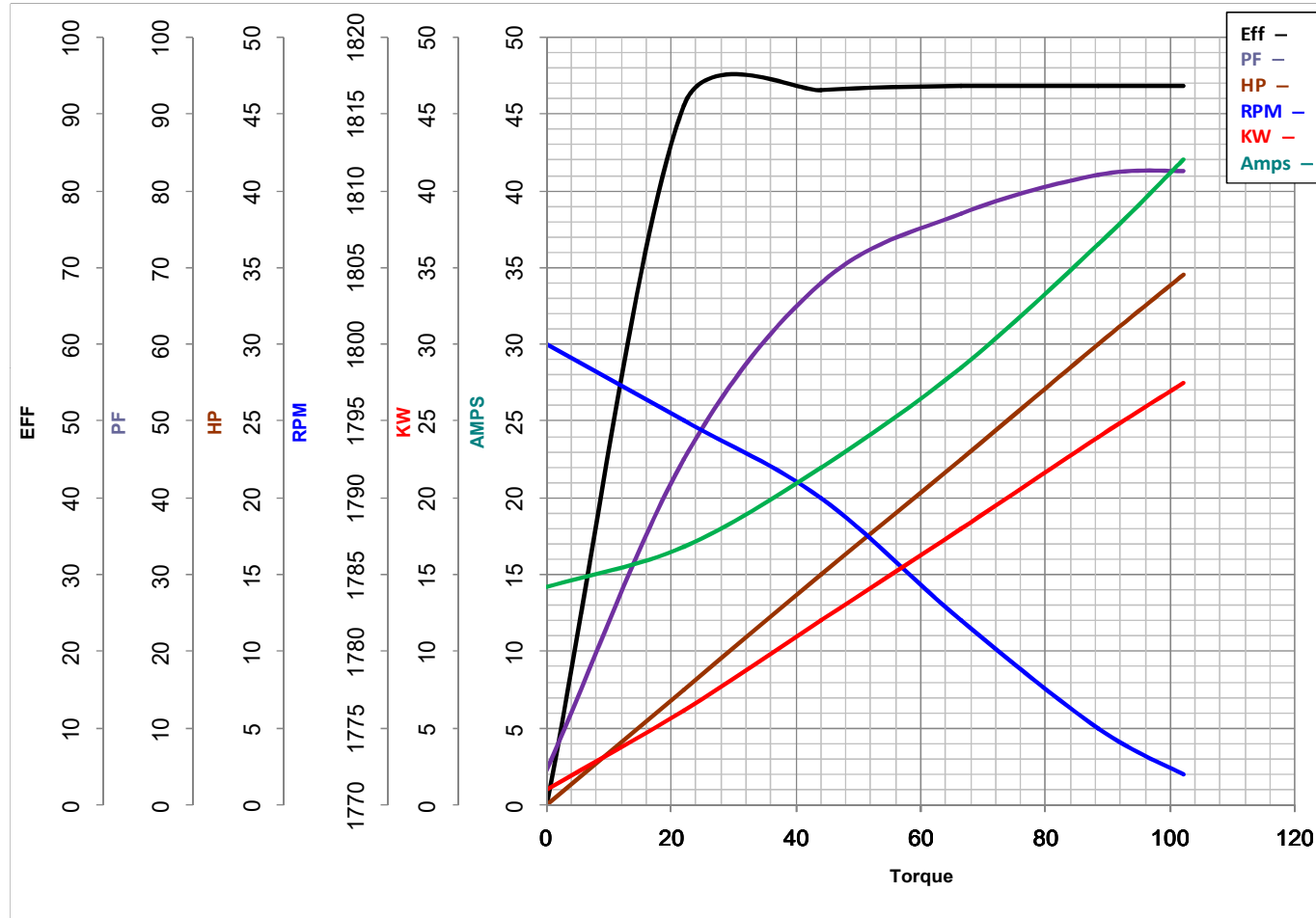
NONE NONE

NONE FT-LB NONE V NONE Hz



LEESON ELECTRIC CORPORATION

TYPICAL PERFORMANCE CURVE for AC MOTOR

Model No 194230.00Curve at 460
60
30Volts
HZ
HPHP 30&25PHASE 3VOLTS 230/460&190/380Catalog No 194230.00HZ 60&50RPM 1775&1475

Torque in Lb.Ft

FL TORQUE 88.5 Lb.Ft
 BD TORQUE 212.0 Lb.Ft
 LR TORQUE 170 Lb.Ft

FL AMPS 73/36.5
 PU TORQUE 160.0 Lb.Ft
 LR AMPS 215

WINDING CHT28640003-2

Date 12/13/2018