

PRODUCT INFORMATION PACKET



Model No: 194191.00

Catalog No: 194191.00

Other Purpose Motor, 150 & 125 HP, 3 Ph, 60 & 50 Hz, 460 & 380 V, 1800 & 1500 RPM, 445T Frame, TEFC



Regal and Leeson are trademarks of Regal Rexnord Corporation or one of its affiliated companies.

©2023 Regal Rexnord Corporation, All Rights Reserved. MC017097E





Nameplate Specifications

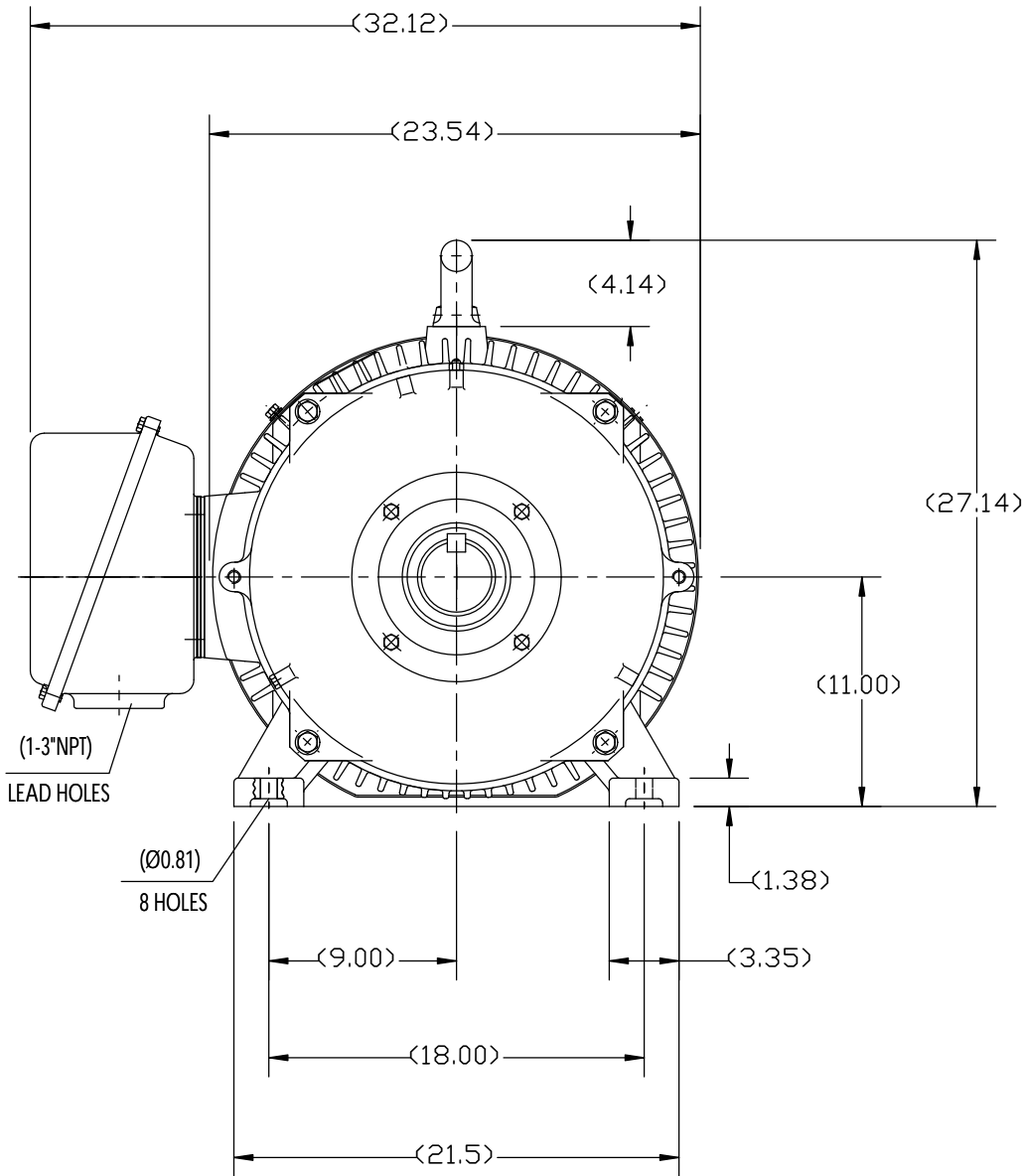
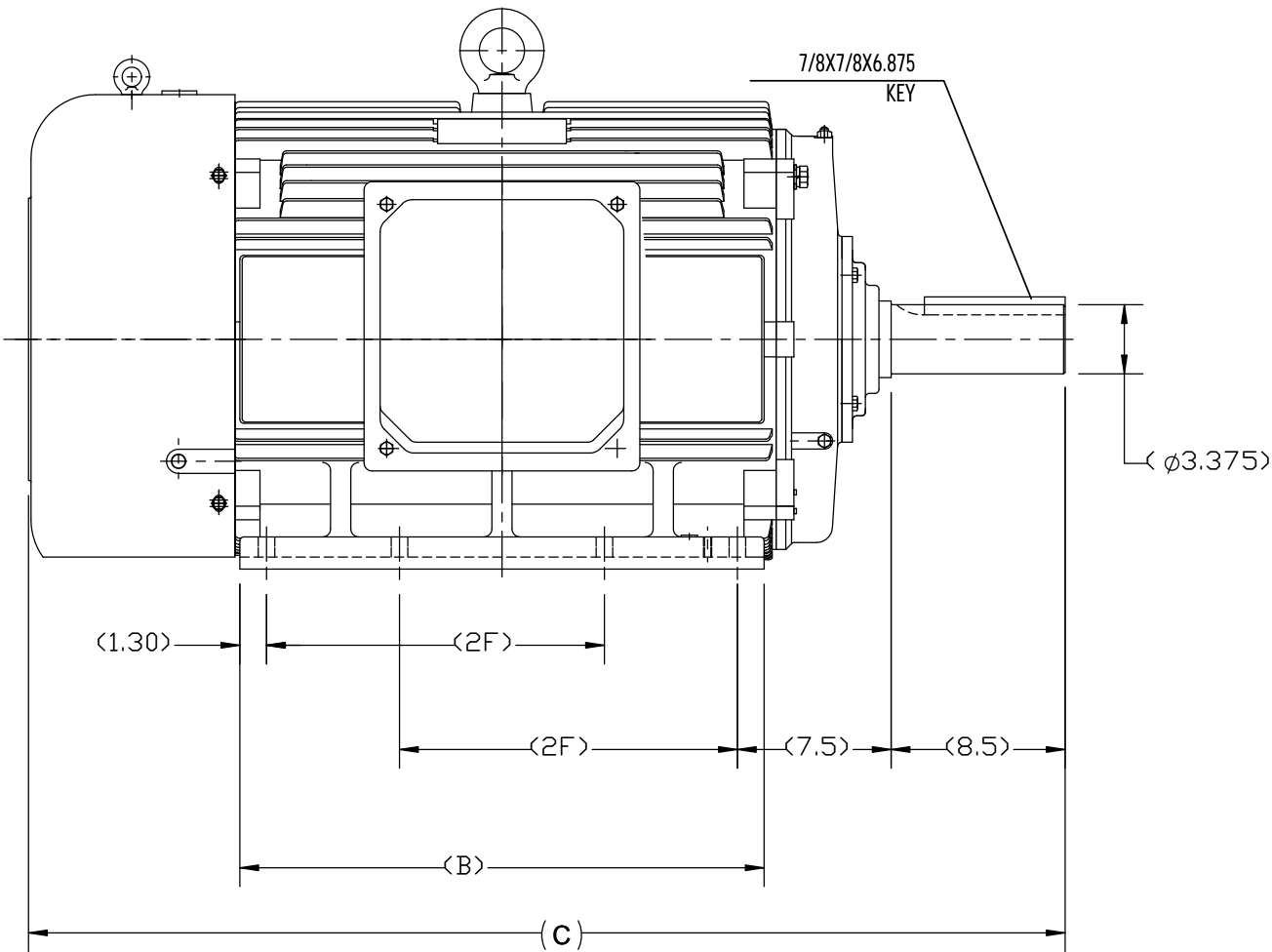
Phase	3	Output HP	150 & 125 Hp
Output KW	112.0 & 93.0 kW	Voltage	460 & 380 V
Speed	1786 & 1486 rpm	Service Factor	1.15 & 1.15
Frame	445T	Enclosure	Totally Enclosed Fan Cooled
Thermal Protection	No Protection	Efficiency	95.8 & 95 %
Ambient Temperature	40 °C	Frequency	60 & 50 Hz
Current	165 & 168 A	Power Factor	88
Duty	Continuous	Insulation Class	F
Design Code	C	KVA Code	G
Drive End Bearing Size	NU319	Opp Drive End Bearing Size	6317
UL	Recognized	CSA	Y
CE	Y	IP Code	55
Number of Speeds	1		

Technical Specifications

Electrical Type	Squirrel Cage Inverter Rated	Starting Method	Part Wdg Start & Wye Start Delta Run Or Inverter
Poles	4	Rotation	Reversible
Resistance Main	.03 Ohms	Mounting	Rigid Base
Motor Orientation	Horizontal	Drive End Bearing	Roller
Opp Drive End Bearing	Ball	Frame Material	Cast Iron
Shaft Type	T	Overall Length	50.78 in
Frame Length	26.77 in	Shaft Diameter	3.375 in
Shaft Extension	8.5 in	Assembly/Box Mounting	F1/F2 CAPABLE
Outline Drawing	SS620677-445T	Connection Drawing	EE7300CB-LE

B



B



A

A

444T	50.787	25.60	14.50
445T			16.50
FRAME	C	B	2F

DRAWING REVISION B	REVISION BY W. JOERGER	DATE 02-27-2017	TOLERANCES UNLESS OTHERWISE SPECIFIED: DEC. INCH mm ANGLE .X ±0.1 [±2.5] ±7° 30" .XX ±0.03 [±0.76] .XXX ±0.005 [±0.127] .XXXX ±0.0005 [±0.0127] REMOVE BURRS & BREAK SHARP EDGES: .003/.015 [0.076/.381] X 45° CORNER FILLETS: R.02 [.51] MACHINED SURFACES: 200 INCH 5.1 mm mm SHOWN IN [BRACKETS]	DRAWN BY ZYH	 Regal Beloit America, Inc.			
ECO ECO-0118824	APPROVED BY E. HEIL	DATE 02-27-2017		DATE 04-22-2012	DESCRIPTION			
ECO DESCRIPTION REMOVED 447T/449T FRAME MOTORS COPYRIGHT REGAL BELOIT AMERICA, INC. ALL RIGHTS RESERVED. PROPRIETARY AND CONFIDENTIAL INFORMATION - THIS DOCUMENT IS THE PROPERTY OF REGAL BELOIT AMERICA, INC. ("OWNER") AND CONTAINS OWNER'S PROPRIETARY INFORMATION. ANY PERSON, CORPORATION OR OTHER FIRM RECEIVING IT IS DEEMED, BY RECEIVING IT, TO AGREE THAT IT, AND/OR ANY PART OF IT, SHALL NOT BE DISCLOSED TO ANY PERSON, CORPORATION OR OTHER ENTITY, DUPLICATED, AND/OR USED, EXCEPT AS EXPRESSLY APPROVED IN WRITING IN ADVANCE BY OWNER. THIS DOCUMENT SHALL BE RETURNED TO OWNER UPON REQUEST. IT MAY BE SUBJECT TO CERTAIN RESTRICTIONS UNDER APPLICABLE EXPORT CONTROL LAWS AND REGULATIONS.				APPROVED BY WGH	OUTLINE 444T/445T FR-TEFC-CAST IRON-SEVERE DUTY			
				DATE 04-22-2012	MATERIAL			
				REFERENCE	PROCESS/FINISH			
				THIRD ANGLE PROJECTION				SHEET 1 OF 1
				SIZE B				
				DRAWING NUMBER SS620677				

T12 _____
 T1 _____
 T6 _____
 T7 _____

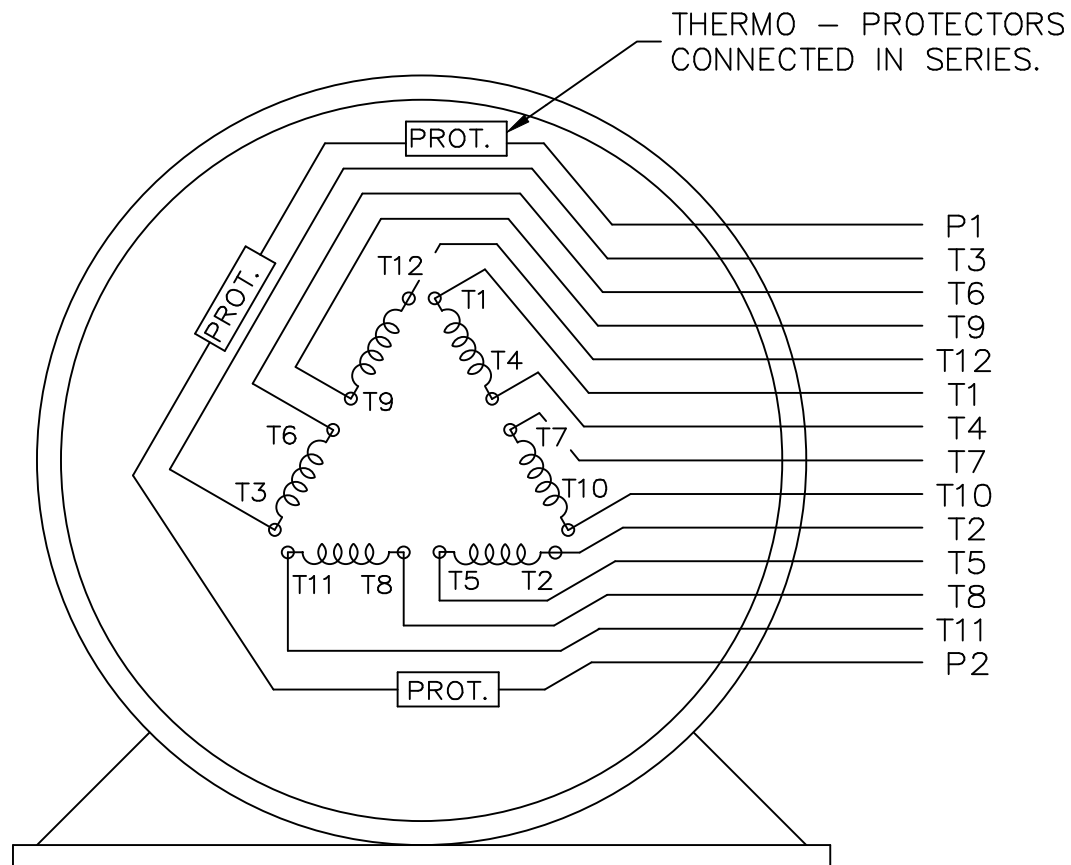
LINE 1

T2 _____
 T4 _____
 T8 _____
 T10 _____


LINE 2

T3 _____
 T5 _____
 T9 _____
 T11 _____

LINE 3



VIEW OF TERMINAL END

				TOLERANCES UNLESS SPECIFIED		 ELECTRIC MOTORS GEARMOTORS AND DRIVES	DRAWN KL 02-27-2003				
				DEC.	INCHES		CHK	GFH	03-03-2003		
				.X	± -		APPD	JES	03-03-2003		
				.XX	± -		SCALE 1=1				
				.XXX	± -		REF				
1	NEW DRAWING	MU45634	KL 03-03-2003	.XXXX	± -	TITLE CONNECTION DIAGRAM - EXTERNAL 12 LEAD SINGLE VOLTAGE			FMF		
NO.	REVISION		BY & DATE	CHK	ANG	± -	FINISH			PREV	
THIS DRAWING IN DESIGN AND DETAIL IS OUR PROPERTY AND MUST NOT BE USED EXCEPT IN CONNECTION WITH OUR WORK ALL RIGHTS OF DESIGN AND INVENTION ARE RESERVED THIS IS AN ELECTRONICALLY GENERATED DOCUMENT - DO NOT SCALE THIS PRINT				RFP		CAD FILE EE7300CB-LE		SIZE	DRAWING NO.	PAGE OF	REV.
				DIST WA-LE-SB				A	EE7300CB-LE		1

ERROR: undefined
OFFENDING COMMAND: Pscript_WinNT_Co
STACK:



P.O. BOX 8003
WAUSAU, WI 54401-8003
PH. 715-675-3311

DATA VOLTS: 460

CERTIFICATION DATA SHEET

CONN. DIAGRAM: EE7300CB-LE

CAT #: 194191.00

OUTLINE: SS620677

WINDING: CHT44540006

NONE 1

TYPICAL MOTOR PERFORMANCE DATA

HP	KW	SYNC RPM	FL RPM	FRAME	ENCLOSURE	TYPE	KVA CODE	DESIGN
150	112	1800	1786	445T	TEFC	TFC	G	C

PH	HZ	VOLTS	AMPS	START TYPE	DUTY	INSL	S.F.	AMB	ELEV.
3	60/50	460#380	165&168	PWS & YDRUN OR INV	CONT	F	1.15	40	3300

F.L. EFF	95.8	3/4 LD EFF	95.8	1/2 LD EFF	95.4	GTD EFF	95.0	ELECT. TYPE	SQ CAGE INV RATED
F.L. PF	88.0	3/4 LD PF	87.0	1/2 LD PF	83.0				

F.L. TORQUE	LR AMPS @ 460 V	L.R. TORQUE	B.D. TORQUE	F.L. RISE (°C)
441 LB-FT	1,085	975 LB-FT 221%	1,050 LB-FT 238%	60

PRESSURE @ 3	POWER	ROTOR WK²	MAX. LOAD WK²	SAFE STALL TIME	STARTS/HOUR	MOTOR WGT
75 dBA	84 dBA	75.0 LB-FT²	1000 LB-FT²	25 SEC.	2	3050 LB.

*** SUPPLEMENTAL INFORMATION ***

DE BRACKET TYPE	ODE BRACKET TYPE	MOUNT TYPE	MOTOR ORIENTATION	SEVERE DUTY	HAZARDOUS LOCATION	DRIP COVER	SCREENS	PAINT
STANDARD	STANDARD	RIGID	HORIZONTAL	UM SEVERE	NONE	NO	NONE	BLUE (EPOXY)

BEARINGS	GREASE	SHAFT TYPE	SPECIAL DE	SPECIAL ODE	SHAFT MATERIAL	FRAME MATERIAL
DE ODE						
ROLLER BALL	SHC-100/POLYREX	T	NONE	NONE	4140 STRESSPROOF (C-214)	CAST IRON
NU319 6317						

THERMOSTATS	PROTECTORS	WDG RTD's	BRG RTD's	THERMISTORS	CONTROL	SPACE HEATERS
TSTATS 160(N/C)	NOT	NONE	NONE	NONE	FALSE	NA

R1 (ohms/ph)	R2 (ohms/ph)	X1 (ohms/ph)	X2 (ohms/ph)	Xm (ohms/ph)	VIBRATION (in/sec)	FLOAT
0.023	0.013	0.127	0.263	6.567	0.080	NONE

* N O T E S *		INVERTER TORQUE: CONSTANT 2:1 INV. HP SPEED RANGE: NONE
	ENCODER: NONE NONE NONE	NONE PPR

DATE: 1/31/2018	BRAKE: NONE NONE	NONE
	FT-LB: NA VOLTAGE: NONE	HZ:
	UL: Y-(LEESON UL REC)	

Data Sheet

Date: 1/31/2018

194191.00



Data @ 460 V

Motor Load Data

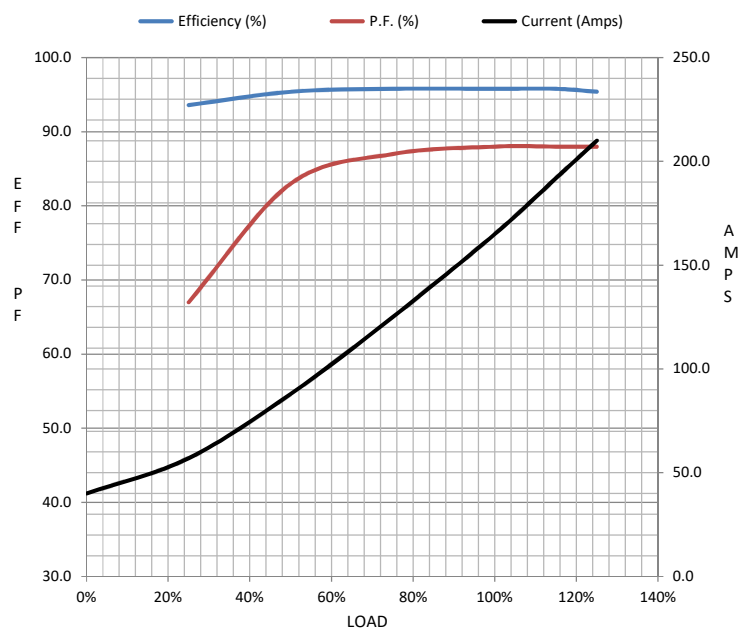
Load	0%	25%	50%	75%	100%	115%	125%	LR	
Current (Amps)	40.0	57.0	88.0	125	165	192	210	1,085	
Torque (ft-lb)	0.00	110	220	330	441	508	553	975	
RPM	1800	1796	1792	1790	1786	1,782	1780	0	
Efficiency (%)		93.6	95.4	95.8	95.8	95.8	95.4		
P.F. (%)	6.0	67.0	83.0	87.0	88.0	88.0	88.0	36.0	

Motor Speed Data

	LR	Pull-Up	BD	Rated	Idle
Speed (RPM)	0	900	1725	1786	1800
Current (Amps)	1,085	950	550	165	40.0
Torque (ft-lb)	975	775	1,050	441	0.00

Information Block

HP	150.0			
Sync. RPM	1800			
Frame	445			
Enclosure	TEFC			
Construction	TFC			
Voltage	460#380 V			
Frequency	60 Hz			
Design	A			
LR Code letter	G			
Service Factor	1.15			
Temp Rise @ FL	60 ° C			
Duty	CONT			
Ambient	40 ° C			
Elevation	1,000 feet			
Rotor/Shaft wk²	75.0 Lb-Ft²			
Ref Wdg	CHT44540006 NONE			
Sound Pressure @ 1M	75 dBA			
VFD Rating	CONSTANT 2:1			
Outline Dwg	SS620677			
Conn. Diag	EE7300CB-LE			
Additional Specifications:				
0				
0				
EQUIV CKT (OHMS / PHASE)				
R1	R2	X1	X2	Xm
0.0230	0.0130	0.1270	0.2630	6.5677



Speed - Torque Curve

