

PRODUCT INFORMATION PACKET



Model No: 194182.00

Catalog No: 194182.00

Other Purpose Motor, 50 & 40 HP, 3 Ph, 60 & 50 Hz, 230/460 & 190/380 V, 1200 & 1000 RPM,
365T Frame, TEFC



Regal and Leeson are trademarks of Regal Rexnord Corporation or one of its affiliated companies.

©2023 Regal Rexnord Corporation, All Rights Reserved. MC017097E



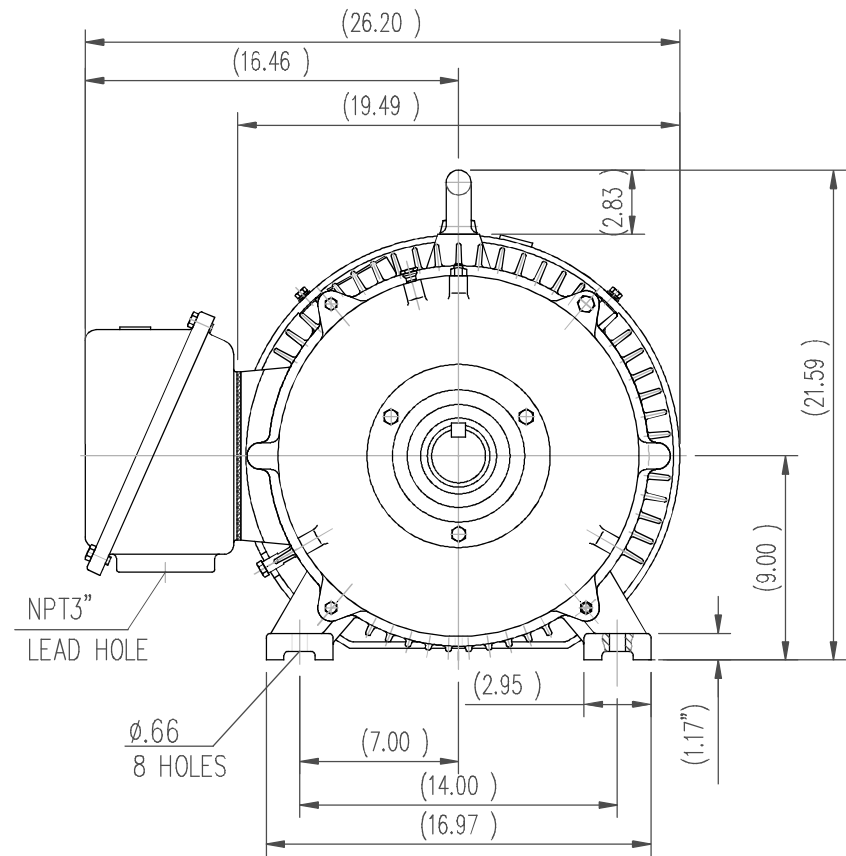
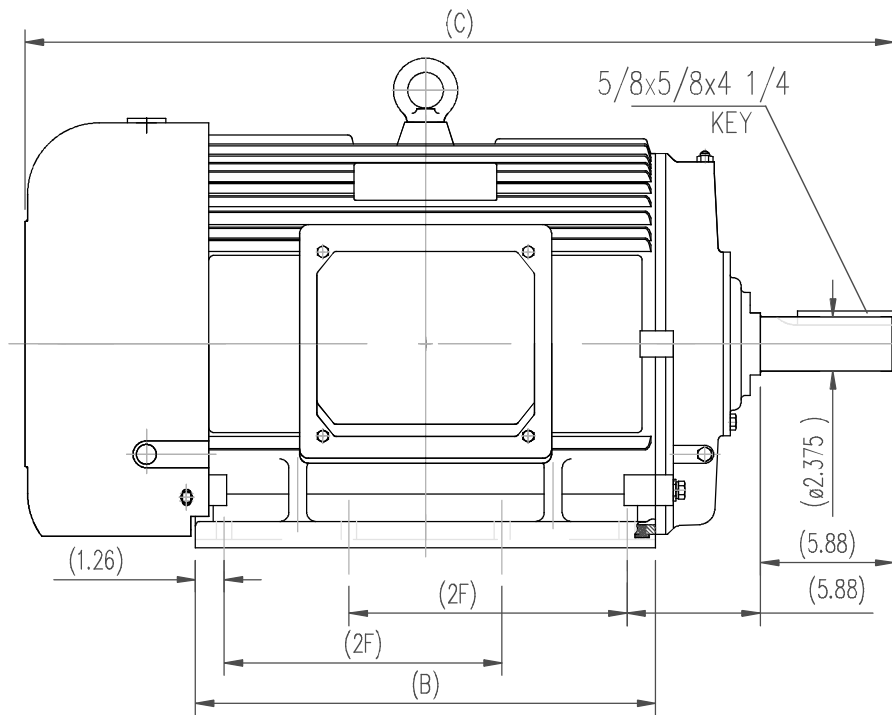


Nameplate Specifications

Phase	3	Output HP	50 & 40 Hp
Output KW	37.0 & 30.0 kW	Voltage	230/460 & 190/380 V
Speed	1188 & 988 rpm	Service Factor	1.15 & 1.15
Frame	365T	Enclosure	Totally Enclosed Fan Cooled
Thermal Protection	Thermostat	Efficiency	94.1 & 93.6 %
Ambient Temperature	40 °C	Frequency	60 & 50 Hz
Current	120/60 & 116/58 A	Power Factor	82
Duty	Continuous	Insulation Class	F
Design Code	C	KVA Code	G
Drive End Bearing Size	NU314	Opp Drive End Bearing Size	6313
UL	Recognized	CSA	Y
CE	N	IP Code	54
Number of Speeds	1		

Technical Specifications

Electrical Type	Squirrel Cage Inverter Rated	Starting Method	Line Or Inverter
Poles	6	Rotation	Reversible
Resistance Main	.12 Ohms	Mounting	Rigid Base
Motor Orientation	Horizontal	Drive End Bearing	Roller
Opp Drive End Bearing	Ball	Frame Material	Cast Iron
Shaft Type	T	Overall Length	36.61 in
Frame Length	20.27 in	Shaft Diameter	2.375 in
Shaft Extension	5.88 in	Assembly/Box Mounting	F1/F2 CAPABLE
Connection Drawing	A-EE7300CB-LE	Outline Drawing	SS620611-365T



364T	36.61	18.5	11.25
365T	38.39	20.28	12.25
Frame	C	B	2F

TOLERANCES UNLESS SPECIFIED				REGAL REGAL-BELOIT CORPORATION		DRAWN ZOU 7.17.2012	
DEC.	INCHES					CHK	
.X	±.1					APPD	
.XX	±.03			TITLE	OUTLINE	SCALE	1=1
.XXX	±.005				364/365T TEFC-SEVERE DUTY	REF	
.XXXX	±.0005			MAT'L		FMF	
NO.	REVISION	BY & DATE	CHK	ANG	FINISH	PREV	
THIS DRAWING IN DESIGN AND DETAIL IS OUR PROPERTY AND MUST NOT BE USED EXCEPT IN CONNECTION WITH OUR WORK ALL RIGHTS OF DESIGN AND INVENTION ARE RESERVED THIS IS AN ELECTRONICALLY GENERATED DOCUMENT - DO NOT SCALE THIS PRINT				RFP	CAD FILE SS620611	SIZE B	DRAWING NO. SS620611
				DIST			REV.

T12 _____
 T1 _____
 T6 _____
 T7 _____

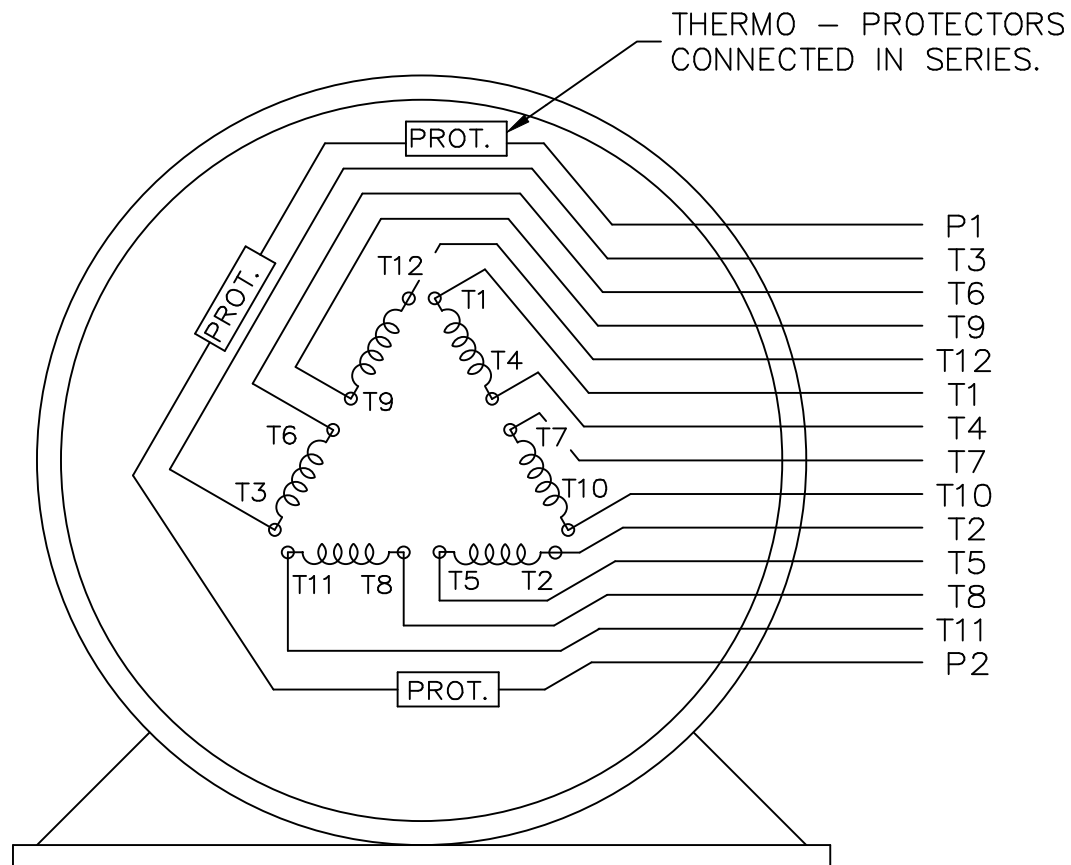
LINE 1

T2 _____
 T4 _____
 T8 _____
 T10 _____


LINE 2

T3 _____
 T5 _____
 T9 _____
 T11 _____

LINE 3



VIEW OF TERMINAL END

				TOLERANCES UNLESS SPECIFIED			ELECTRIC MOTORS GEARMOTORS AND DRIVES		DRAWN KL 02-27-2003			
				DEC.	INCHES				CHK GFH 03-03-2003			
				.X	± -				APPD JES 03-03-2003			
				.XX	± -				SCALE 1=1			
				.XXX	± -	TITLE CONNECTION DIAGRAM - EXTERNAL 12 LEAD SINGLE VOLTAGE			REF			
1	NEW DRAWING	MU45634	KL 03-03-2003	.XXXX	± -				MAT'L.			FMF
NO.	REVISION		BY & DATE	CHK	ANG	± -	FINISH			PREV		
THIS DRAWING IN DESIGN AND DETAIL IS OUR PROPERTY AND MUST NOT BE USED EXCEPT IN CONNECTION WITH OUR WORK ALL RIGHTS OF DESIGN AND INVENTION ARE RESERVED THIS IS AN ELECTRONICALLY GENERATED DOCUMENT - DO NOT SCALE THIS PRINT				RFP		CAD FILE EE7300CB-LE			SIZE	DRAWING NO. PAGE OF		REV.
				DIST WA-LE-SB					A	EE7300CB-LE		1

ERROR: undefined
OFFENDING COMMAND: Pscript_WinNT_Co
STACK:



CERTIFICATION DATA SHEET

**1051 CHEYENNE AVE.
GRAFTON, WI 53024
PH. 262-377-8810**

CATALOG #: 194182.00

CONN. DIAGRAM: A-EE7300CB-LE

OUTLINE: SS620611

MOUNTING: F1/F2 CAPABLE

WINDING #: CHT36560005 1

TYPICAL MOTOR PERFORMANCE DATA

HP	kW	SYNC. RPM	F.L. RPM	FRAME	ENCLOSURE	KVA CODE	DESIGN
50&40	37.0&30.0	1200	1188&988	365T	TEFC	G	C

PH	Hz	VOLTS	AMPS	START TYPE	DUTY	INSL	S.F.	AMB°C
3	60/50	230/460&190/380	120/60&116/58	LINE OR INVERTER	CONTINUOUS	F1	1.15/1.15	40

FULL LOAD EFF:	94.1&93.6	3/4 LOAD EFF:	93.6	1/2 LOAD EFF:	93	GTD. EFF		ELEC. TYPE
FULL LOAD PF:	82&83.5	3/4 LOAD PF:	78	1/2 LOAD PF:	69	93		SQ CAGE INV RATED

F.L. TORQUE	LOCKED ROTOR AMPS	L.R. TORQUE	B.D. TORQUE	F.L. RISE°C
221 LB-FT	724 / 362	480 LB-FT 215 %	550 LB-FT 250 %	75

SOUND PRESSURE @ 3 FT.	SOUND POWER	ROTOR WK^2	MAX. WK^2	SAFE STALL TIME	STARTS / HOUR	APPROX. MOTOR WGT
68 dBA	78 dBA	27.5 LB-FT^2	900 LB-FT^2	20 SEC.	2	1100 LBS.

***** SUPPLEMENTAL INFORMATION *****

DE BRACKET TYPE	ODE BRACKET TYPE	MOUNT TYPE	ORIENTATION	SEVERE DUTY	HAZARDOUS LOCATION	DRIP COVER	SCREENS	PAINT
STANDARD	STANDARD	RIGID	HORIZONTAL	TRUE	NONE	FALSE	NONE	BLUE (EPOXY)

BEARINGS		GREASE	SHAFT TYPE	SPECIAL DE	SPECIAL ODE	SHAFT MATERIAL	FRAME MATERIAL
DE	ODE						
ROLLER	BALL	POLYREX EM	T	NONE	NONE	4140 STRESSPROOF (C-214)	CAST IRON
NU314	6313						

THERMO-PROTECTORS				THERMISTORS	CONTROL	SPACE HEATERS
THERMOSTATS	PROTECTORS	WDG RTDs	BRG RTDs			
TSTATS (N/C)	NOT	NONE	NONE	NONE	FALSE	NONE VOLTS

*

N

O

T

E

S

INVERTER TORQUE:	CONSTANT 20:1
INV. HP SPEED RANGE:	NONE
ENCODER:	NONE
	NONE NONE
	NONE NONE PPR
BRAKE:	NONE NONE
	NONE P/N NONE
	NONE NONE
	NONE FT-LB NONE V NONE Hz

Data Sheet

Date: 1/17/2018

194182.00



Data @ 460 V

Motor Load Data

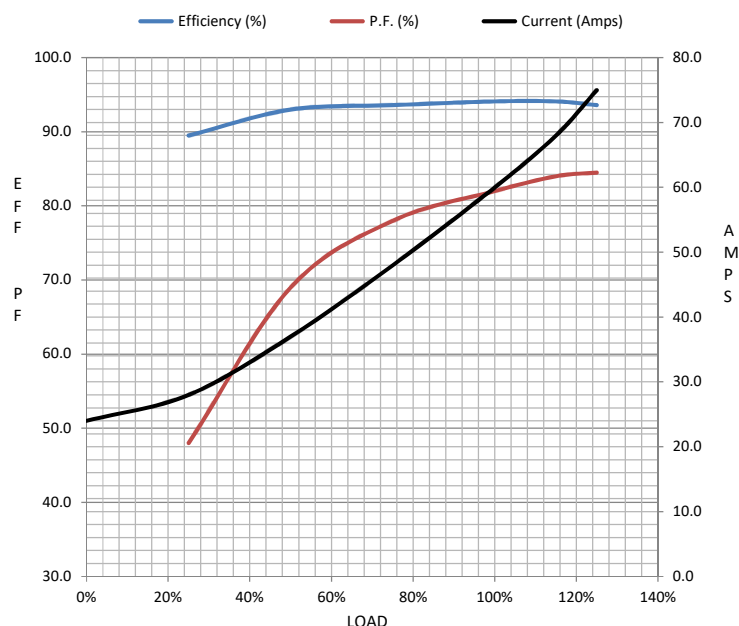
Load	0%	25%	50%	75%	100%	115%	125%	LR	
Current (Amps)	24.0	28.0	37.0	48.0	60.0	68.0	75.0	362	
Torque (ft-lb)	0.00	55.0	110	165	221	255	277	480	
RPM	1200	1196	1194	1190	1188	1,185	1182	0	
Efficiency (%)		89.5	93.0	93.6	94.1	94.1	93.6		
P.F. (%)	5.0	48.0	69.0	78.0	82.0	84.0	84.5	37.0	

Motor Speed Data

	LR	Pull-Up	BD	Rated	Idle
Speed (RPM)	0	600	1150	1188	1200
Current (Amps)	362	325	210	60.0	24.0
Torque (ft-lb)	480	350	550	221	0.00

Information Block

HP	50.0			
Sync. RPM	1200			
Frame	365			
Enclosure	TEFC			
Construction	TFC			
Voltage	230/460#190/380 V			
Frequency	60 Hz			
Design	B			
LR Code letter	G			
Service Factor	1.15			
Temp Rise @ FL	75 °C			
Duty	CONT			
Ambient	40 °C			
Elevation	1,000 feet			
Rotor/Shaft wk²	27.5 Lb-Ft²			
Ref Wdg	CHT36560005 NONE			
Sound Pressure @ 1M	68 dBA			
VFD Rating	CONSTANT 20:1			
Outline Dwg	SS620611			
Conn. Diag	A-EE7300CB-LE			
Additional Specifications:				
0				
0				
EQUIV CKT (OHMS / PHASE)				
R1	R2	X1	X2	Xm
0.0820	0.0480	0.3350	0.6920	11.1190



Speed - Torque Curve

