

PRODUCT INFORMATION PACKET



Model No: 194108.00

Catalog No: 194108.00

SST Duck™ General Purpose Motor, 10 HP, 3 Ph, 60 Hz, 575 V, 1800 RPM, 215TC Frame, TEFC



Regal and Leeson are trademarks of Regal Rexnord Corporation or one of its affiliated companies.

©2022 Regal Rexnord Corporation, All Rights Reserved. MC017097E





Nameplate Specifications

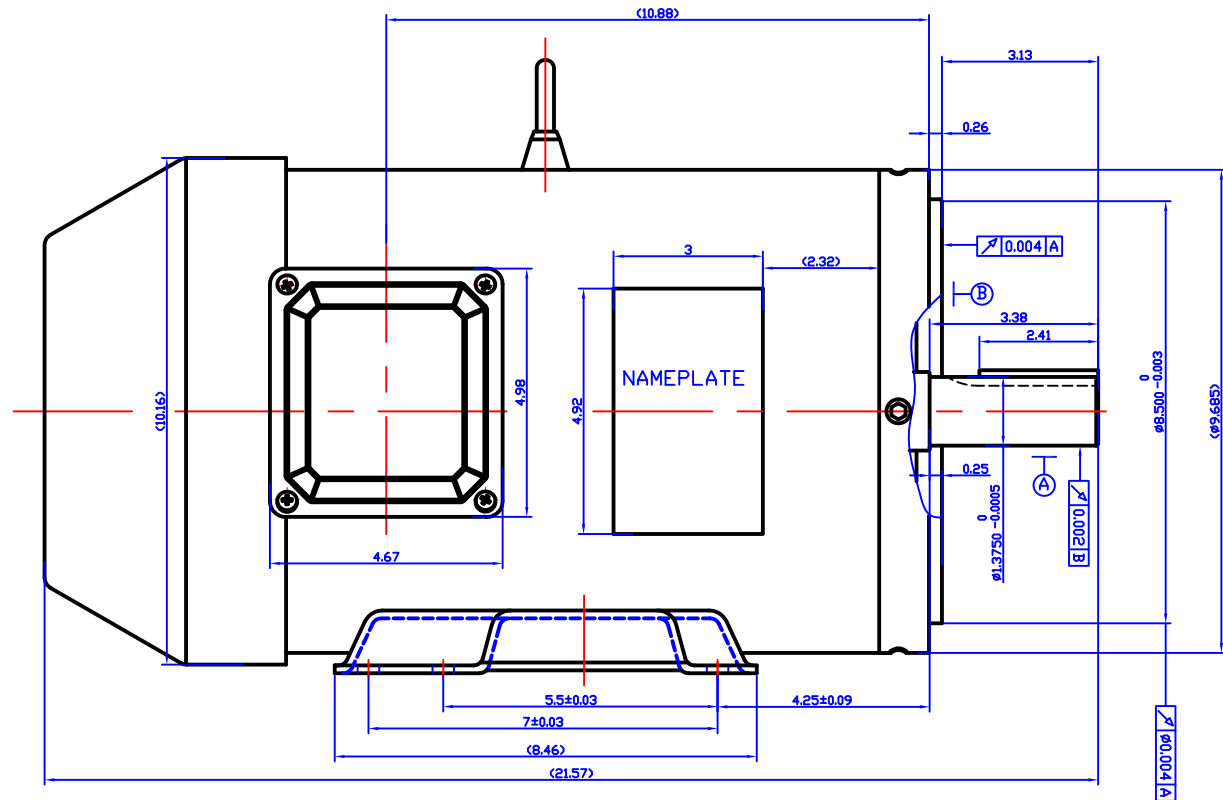
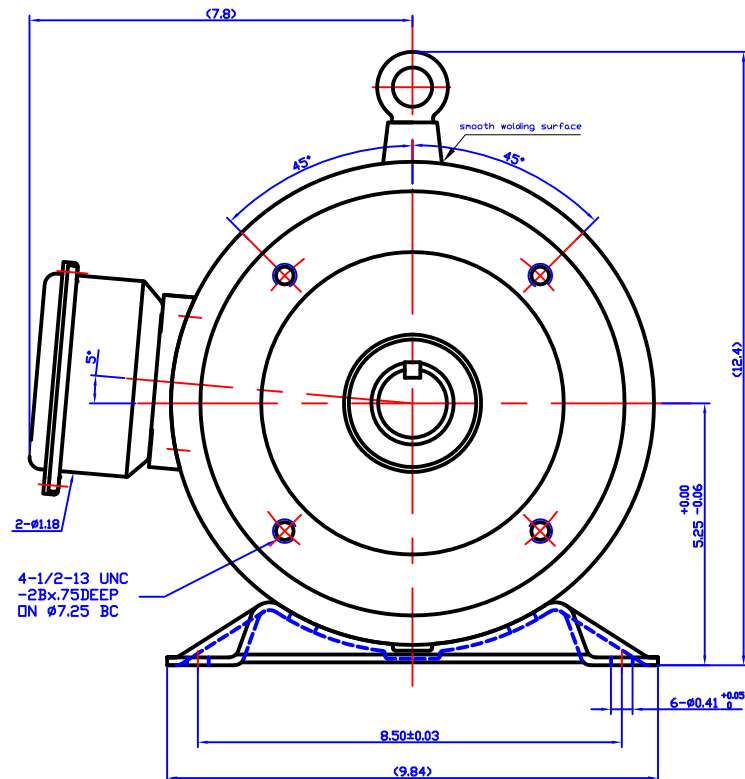
Output HP	10 Hp	Output KW	7.5 kW
Frequency	60 Hz	Voltage	575 V
Current	- A	Service Factor	1.15
Phase	3	Duty	Continuous
Insulation Class	F	Design Code	B
KVA Code	-	Frame	215TC
Enclosure	Totally Enclosed Fan Cooled	Thermal Protection	No Protection
Ambient Temperature	40 °C	Drive End Bearing Size	6306
Opp Drive End Bearing Size	6306	UL	Recognized
CSA	Y	CE	Y
IP Code	43	Number of Speeds	1

Technical Specifications

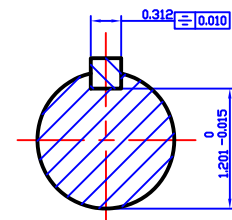
Electrical Type	Squirrel Cage Inverter Rated	Starting Method	Line Or Inverter
Poles	4	Rotation	Reversible
Mounting	Rigid Base	Motor Orientation	Horizontal
Drive End Bearing	Ball	Opp Drive End Bearing	Ball
Frame Material	Stainless Steel	Shaft Type	T
Shaft Diameter	1.375 in	Assembly/Box Mounting	F1/F2 CAPABLE
Inverter Load	VARIABLE 10:1		
Outline Drawing	OL210TCSST	Connection Drawing	005010.01

This is an uncontrolled document once printed or downloaded and is subject to change without notice. Date Created:11/30/2022

REV	APPD	REV BY	DATE	APPD	DATE
					3.4.2015



CAT NO.	GW MODEL NO	FRAME	HP	VOLTS	Hz	RPM	MOUNTING	S.F	DUTY	ENCL.	PH
194004.00	GWS7.5-2-213TC	213TC-2	7.5	230/460	60	3600	RIGID+C FLANGE	1.15	CONT.	TEFC	3
194288.00	GWS7.5-2-575-213TC	213TC-2	7.5	575	60	3600	RIGID+C FLANGE	1.15	CONT.	TEFC	3
194005.00	GWS7.5-4-213TC	213TC-4	7.5	230/460	60	1800	RIGID+C FLANGE	1.15	CONT.	TEFC	3
194106.00	GWS7.5-4-575-213TC	213TC-4	7.5	575	60	1800	RIGID+C FLANGE	1.15	CONT.	TEFC	3
194006.00	GWS10-2-215TC	215TC-2	10	230/460	60	3600	RIGID+C FLANGE	1.15	CONT.	TEFC	3
194107.00	GWS10-2-575-215TC	215TC-2	10	575	60	3600	RIGID+C FLANGE	1.15	CONT.	TEFC	3
194007.00	GWS10-4-215TC	215TC-4	10	230/460	60	1800	RIGID+C FLANGE	1.15	CONT.	TEFC	3
194108.00	GWS10-4-575-215TC	215TC-4	10	575	60	1800	RIGID+C FLANGE	1.15	CONT.	TEFC	3



DR BY: ZHAOQING 2016-08-18

APPD:

FIRST ANGLE PROJECTION



EDS DATE

VERSION

REVS

CONFIDENTIAL: THIS DRAWING AND ITS INFORMATION ARE THE EXCLUSIVE AND CONFIDENTIAL PROPERTY OF REGAL BELOIT CORPORATION AND ARE NOT TO BE DISCLOSED, DUPLICATED, DISTRIBUTED OR OTHERWISE USED WITHOUT THE WRITTEN CONSENT OF REGAL BELOIT CORPORATION

-ALL RIGHTS RESERVED.

REGAL

REGAL-BELOIT CORPORATION

DESCRIPTION

OUTLINE OF SST MOTORS FOR 210 FR

SIZE

DWG NO

A3

OL210TCSST

SCALE

1:2

SHEET

005010-01

VIEW FROM OUTSIDE OF MOTOR AT SWITCH END.



				TOLERANCES UNLESS SPECIFIED		 Regal Beloit America, Inc.			DRAWN	RDW 04/12/02	
				DEC.	INCHES				CHK		
				.X	±.1				APPD		
				.XX	±.01				SCALE	1=1	
				.XXX	±.005	TITLE EXTERNAL WIRING DIAGRAM 3 PHASE W/O PROTECTOR			REF	FIG.2-51	
A	UPDATED TO REGAL LOGO	SAJ 06/26/15	AJY	.XXXX	±.0005				MAT'L.	DECAL - 004014	FMF
NO.	REVISION	BY & DATE	CHK	ANG	±1/2"	FINISH				PREV	
THIS DRAWING IN DESIGN AND DETAIL IS OUR PROPERTY AND MUST NOT BE USED EXCEPT IN CONNECTION WITH OUR WORK ALL RIGHTS OF DESIGN AND INVENTION ARE RESERVED THIS IS AN ELECTRONICALLY GENERATED DOCUMENT - DO NOT SCALE THIS PRINT				RFP	04/12/02	CAD FILE	00501001	SIZE A	DRAWING NO. 005010-01		REV A
				DIST BRF-NLV							



P.O. BOX 8003
WAUSAU, WI 54401-8003
PH. 715-675-3311

DATA VOLTS: 575

CERTIFICATION DATA SHEET

CUSTOMER:**ORDER #:****CONN. DIAGRAM:****OUTLINE:****WINDING:****SPEED:**

005010.01

OL210TCSST

QT2104

FR

4

CUSTOMER P.O. #:**REFERENCE MODEL #:****CAT #:****CUSTOMER PART #:****MOUNTING:**

194108

194108.00

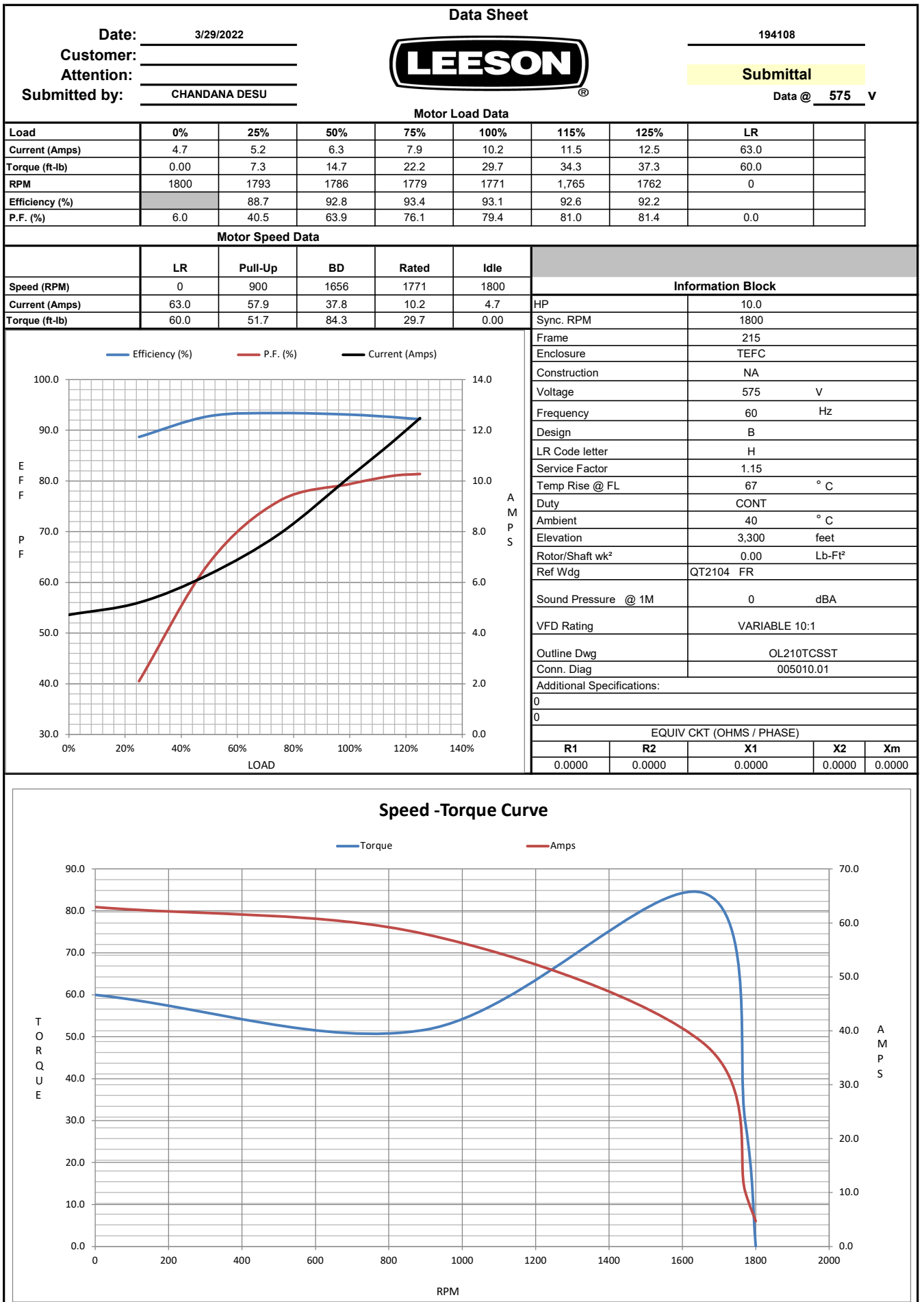
F1/F2 CAPABLE

TYPICAL MOTOR PERFORMANCE DATA

HP	KW	SYNC RPM	FL RPM	FRAME	ENCLOSURE	TYPE	KVA CODE	DESIGN	
10	7.5	1800	1771	215TC	TEFC	NA	H	B	
PH	HZ	VOLTS	AMPS	START TYPE	DUTY	INSL	S.F.	AMB	ELEV.
3	60	575	ding Group Reference Voltage	LINE OR INVERTER	CONT	F	1.15	40	3300
F.L. EFF		93.1	3/4 LD EFF	93.4	1/2 LD EFF	92.8	GTD EFF	ELECT. TYPE	
F.L. PF		79.4	3/4 LD PF	76.1	1/2 LD PF	63.9	0.0	SQ CAGE INV RATED	
F.L. TORQUE		LR AMPS @ 460 V		L.R. TORQUE		B.D. TORQUE		F.L. RISE (°C)	
29.7	LB-FT	63.0		60.0	LB-FT	202%	84.3	LB-FT	284%
SOUND PRESSURE @ 3 FT.		SOUND	POWER	ROTOR WK²	MAX. LOAD WK²	SAFE STALL TIME	STARTS/HOUR	APPROX.	MOTOR WGT
0 dBA		9 dBA		0.00 LB-FT²	0 LB-FT²	0 SEC.	2	0	LB.
*** SUPPLEMENTAL INFORMATION ***									
DE BRACKET TYPE		ODE BRACKET TYPE		MOUNT TYPE	MOTOR ORIENTATION	SEVERE DUTY	HAZARDOUS LOCATION	DRIP COVER	SCREENS
C-FACE		STANDARD		RIGID	HORIZONTAL	NO	NONE	NO	NONE
BEARINGS		GREASE		SHAFT TYPE		SPECIAL DE		SPECIAL ODE	
DE		ODE							
BALL		BALL		POLYREX EM		T		NONE	
6306		6306						303 STAINLESS (C-501)	
THERMOSTATS		PROTECTORS		WDG RTD's		BRG RTD's		THERMISTORS	
NONE		NOT		NONE		NONE		NONE	
R1 (ohms/ph)		R2 (ohms/ph)		X1 (ohms/ph)		X2 (ohms/ph)		Xm (ohms/ph)	
0		0		0		0		0	
VIBRATION (in/sec)		FLOAT							
0.150		ODE							
* N O T E *									
		INVERTER TORQUE: VARIABLE 10:1							
		INV. HP SPEED RANGE: NONE							
		ENCODER: NONE							
		NONE							
		NONE PPR							
		BRAKE: NONE							
		NONE							
		FT-LB: NA							
		VOLTAGE: NONE							
		HZ:							
		UL: Y							

FORM: 3531 REV_4

2/27/06



EC Declaration of Conformity

The undersigned representing
the manufacturer:

Regal Beloit America
100 East Randolph St.
Wausau, WI 54401

and the authorized representative
established within the Community:

Marathon Electric UK
6F Thistleton Road Ind. Estate
Market Overton
Oakham, Rutland LE15 7PP UK

are committed to providing customers with products that comply with applicable regulations and international protocols to which they are subject, including the requirements of the European Parliament Directive on the Harmonization of the laws relating to electrical equipment designed for use within certain voltage limits (2014/35/EU).

Regal Beloit America declares that the following product(s), to which this declaration relates, are in conformity with the relevant sections of the EC standards listed below.

This statement supersedes any statements previously issued pertaining to the product(s) listed below and is subject to change without notice.

Model No : 194108.00

(Model No. may contain prefix and/or suffix characters)

Catalog No : 194108.00

Rework No : N/A

Directives :

Low Voltage Directive 2014/35/EU

Harmonized Standards Used :

EN 60034-1: 2010 (IEC 60034-1: 2010)

EN 60034-5: 2001/A1:2007 (IEC 60034-5: 2000/A1:2006)

Authorized Representative:



Michael A. Logsdon
Vice President, Technology

Authorized Representative in the Community:



Julian Clark
Marketing Engineer

Created on 09/01/2022

CE 22