

# PRODUCT INFORMATION PACKET



Model No: 194015.00

Catalog No: 194015.00

SST Duck™ General Purpose Motor, 30 & 25 HP, 3 Ph, 60 & 50 Hz, 208-230/460 & 190/380 V,  
1800 & 1500 RPM, 286TC Frame, TEFC



Regal and Leeson are trademarks of Regal Rexnord Corporation or one of its affiliated companies.

©2023 Regal Rexnord Corporation, All Rights Reserved. MC017097E





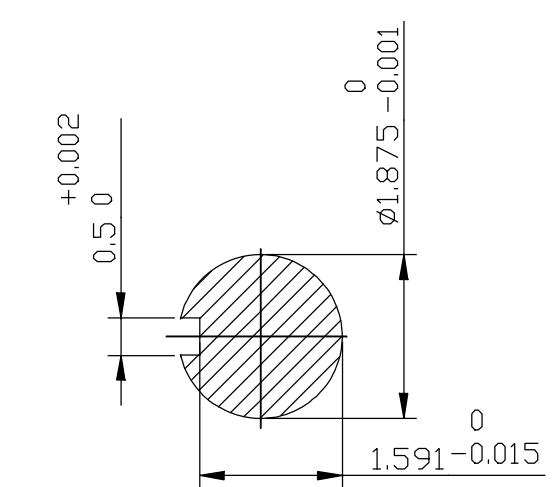
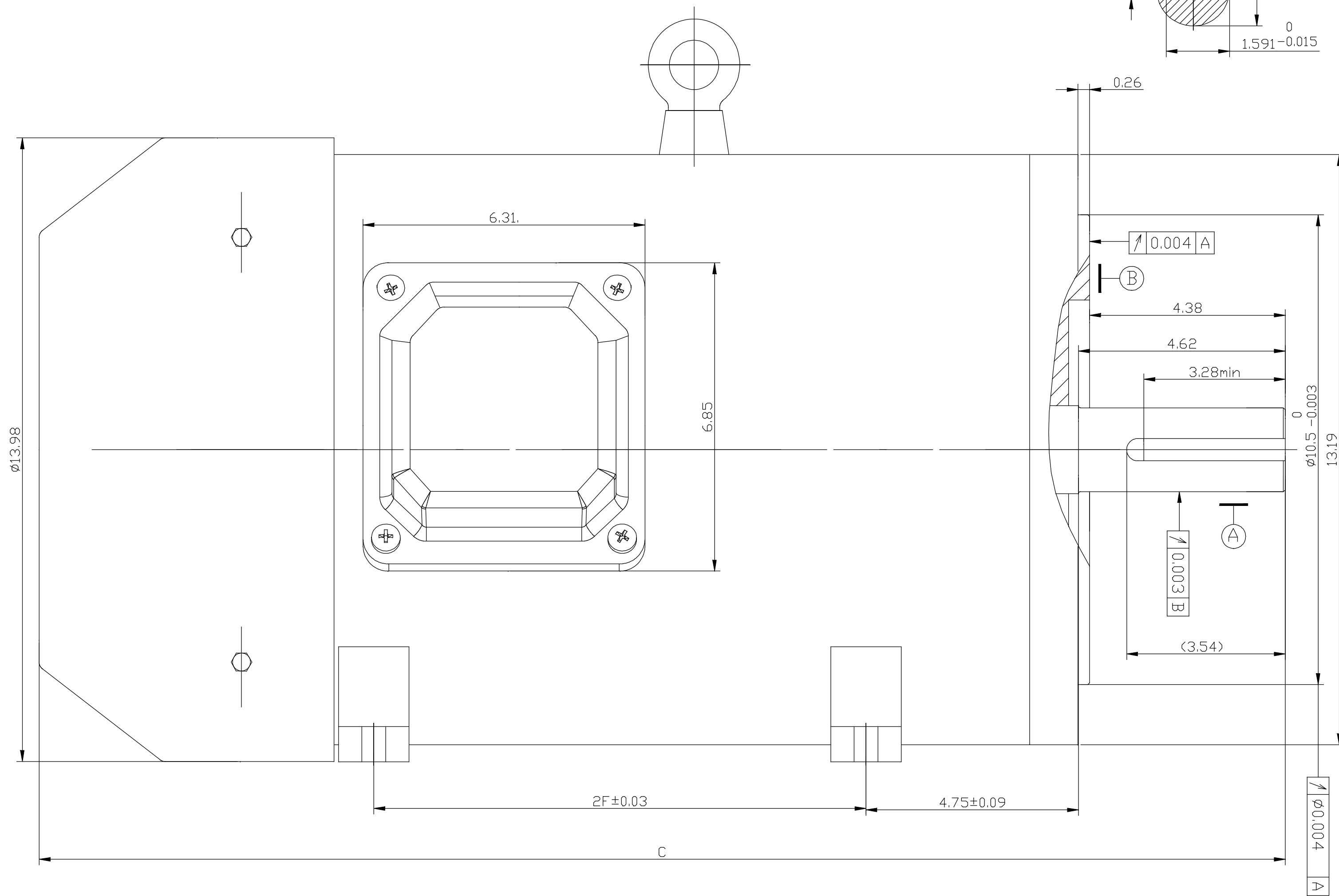
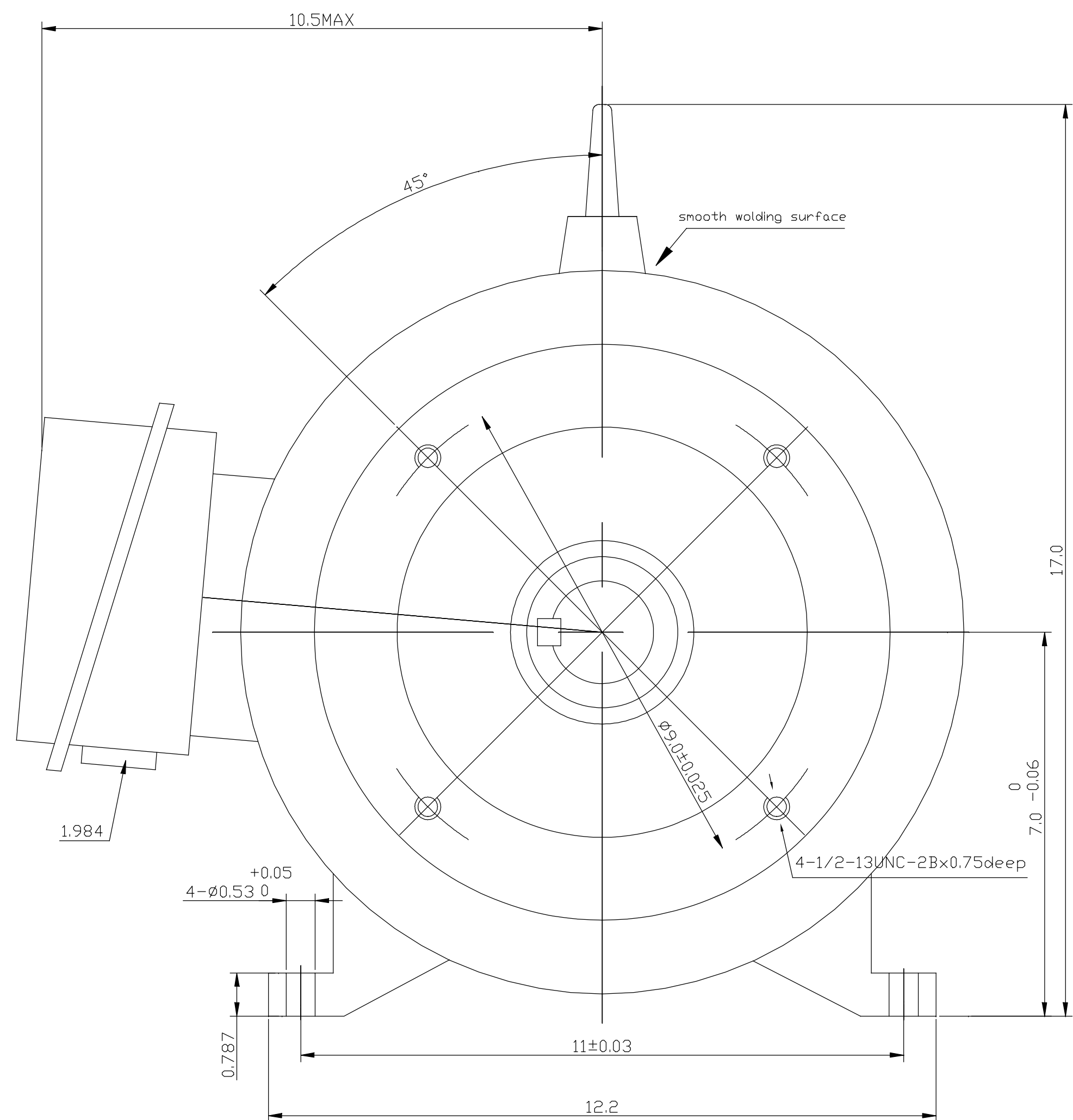
### Nameplate Specifications

Phase	3	Output HP	30 & 25 Hp
Output KW	22.4 & 18.7 kW	Voltage	208-230/460 & 190/380 V
Speed	1770 & 1470 rpm	Service Factor	1.15 & 1.15
Frame	286TC	Enclosure	Totally Enclosed Fan Cooled
Thermal Protection	No Protection	Efficiency	93.6 & 92.4 %
Ambient Temperature	40 °C	Frequency	60 & 50 Hz
Current	76-68/34 & 69/34.5 A	Power Factor	87
Duty	Continuous	Insulation Class	F
Design Code	B	KVA Code	G
Drive End Bearing Size	6310	Opp Drive End Bearing Size	6212
UL	Recognized	CSA	Y
CE	Y	IP Code	43
Number of Speeds	1		

### Technical Specifications

Electrical Type	Squirrel Cage Inverter Rated	Starting Method	Line Or Inverter
Poles	4	Rotation	Reversible
Mounting	Rigid Base	Motor Orientation	Horizontal
Drive End Bearing	Ball	Opp Drive End Bearing	Ball
Frame Material	Stainless Steel	Shaft Type	T
Overall Length	27.95 in	Shaft Diameter	1.875 in
Shaft Extension	4.64 in	Assembly/Box Mounting	F1/F2 CAPABLE
Inverter Load	CONSTANT 2:1		
Connection Drawing	005010.01	Outline Drawing	SS620848

SS620848



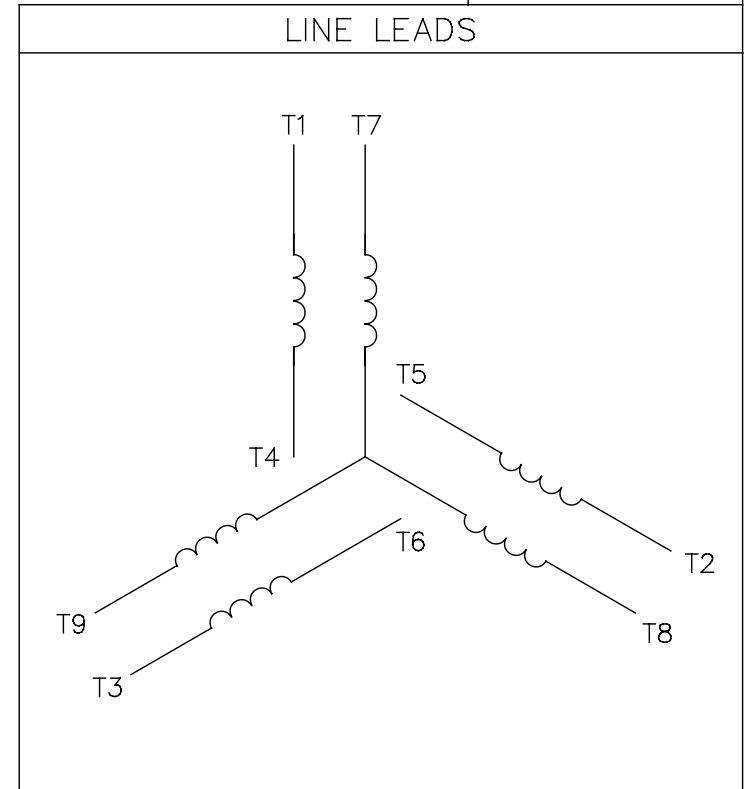
LEESON PART NO.	FRAME	HP	VOLTS	Hz	RPM	MOUNTING	S.F	DUTY	ENCL.	PH	2F	C
194012.00	284TC-2	25	230/460	60	3600	RIGID+C FLANGE	1.15	CONT.	TEFC	3	9.5	26.97MAX
194013.00	284TC-4	25	230/460	60	1800	RIGID+C FLANGE	1.15	CONT.	TEFC	3	9.5	26.97MAX
194014.00	286TC-2	30	230/460	60	3600	RIGID+C FLANGE	1.15	CONT.	TEFC	3	11.0	27.95MAX
194015.00	286TC-4	30	230/460	60	1800	RIGID+C FLANGE	1.15	CONT.	TEFC	3	11.0	27.95MAX

NOTE:  
1. TO REFERENCE DW DRAWING OGW.302.709

NO.	REVISION	BY & DATE	CHK	ANG	±1/2	TOLERANCES UNLESS SPECIFIED		REGAL REGAL - BELOIT CORPORATION	DRAWN		
						DEC.	METRIC				
B	NOTE ADDED		NK	9/25/18	ST	.XXX	±.127	TITLE OUTLINE SST 280 FRAME	CHECKED		
A	RELEASED FOR PRODUCTION ECO-0126037		WGJ	6-27-17	EMH	.XXXX	±.0127		SCALE		
								REF			
								FMF			
								PREV			
THIS DRAWING IN DESIGN AND DETAIL IS OUR PROPERTY AND MUST NOT BE USED EXCEPT IN CONNECTION WITH OUR WORK ALL RIGHTS OF DESIGN AND INVENTION ARE RESERVED THIS IS AN ELECTRONICALLY GENERATED DOCUMENT - DO NOT SCALE THIS PRINT						RFP	CAD FILE	SS620848	SIZE	DRAWING NO.	REV.
						DIST			B	SS620848	B

005010-01

VIEW FROM OUTSIDE OF MOTOR AT SWITCH END.



VOLTAGE	L1	L2	L3	JOIN & INSULATE
HIGH	T1	T2	T3	(T4,T7) (T5,T8) (T6,T9)
LOW	T1,T7	T2,T8	T3,T9	T4,T5,T6

				TOLERANCES UNLESS SPECIFIED		<b>Regal Beloit America, Inc.</b>		DRAWN RDW 04/12/02				
				DEC.	INCHES			CHK				
				.X	±.1			APPD				
				.XX	±.01			SCALE 1=1				
				.XXX	±.005	TITLE		REF FIG.2-51				
A	UPDATED TO REGAL LOGO			SAJ	06/26/15	AJY	.XXXX	±.0005	MAT'L. DECAL - 004014	FMF		
NO.	REVISION			BY & DATE	CHK	ANG	±1/2"	FINISH	PREV			
THIS DRAWING IN DESIGN AND DETAIL IS OUR PROPERTY AND MUST NOT BE USED EXCEPT IN CONNECTION WITH OUR WORK ALL RIGHTS OF DESIGN AND INVENTION ARE RESERVED THIS IS AN ELECTRONICALLY GENERATED DOCUMENT - DO NOT SCALE THIS PRINT				RFP	04/12/02		CAD FILE	00501001		SIZE	DRAWING NO.	REV.
				DIST	BRF-NLV				A	005010-01		A

**Data Sheet**

Date: 2/2/2023  
 Customer: \_\_\_\_\_  
 Attention: \_\_\_\_\_  
 Submitted by: \_\_\_\_\_

194015.00



**Submittal**

Data @ 460 V

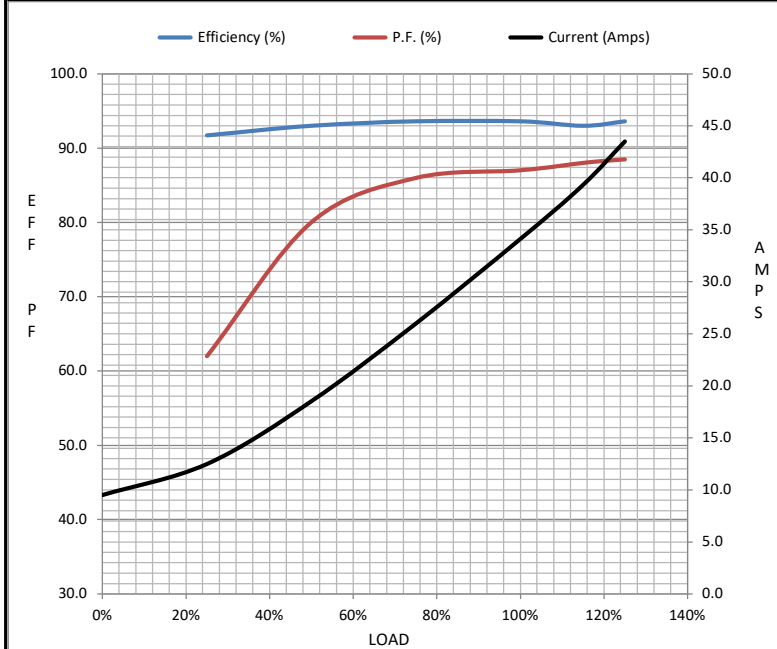
**Motor Load Data**

Load	0%	25%	50%	75%	100%	115%	125%	LR	
Current (Amps)	9.5	12.5	18.5	26.0	34.1	39.3	43.5	210	
Torque (ft-lb)	0.00	22.0	44.0	66.5	88.5	102	111	145	
RPM	1800	1795	1788	1782	1770	1,765	1762	0	
Efficiency (%)		91.7	93.0	93.6	93.6	93.0	93.6		
P.F. (%)	5.5	62.0	80.0	86.0	87.0	88.0	88.5	34.0	

**Motor Speed Data**

	LR	Pull-Up	BD	Rated	Idle
Speed (RPM)	0	900	1675	1770	1800
Current (Amps)	210	190	140	34.1	9.5
Torque (ft-lb)	145	125	235	88.5	0.00

Information Block				
HP	30.0			
Sync. RPM	1800			
Frame	286			
Enclosure	TEFC			
Construction	TFR			
Voltage	208-230/460#190/380 V			
Frequency	60 Hz			
Design	B			
LR Code letter	G			
Service Factor	1.15			
Temp Rise @ FL	80 ° C			
Duty	CONT			
Ambient	40 ° C			
Elevation	3,300 feet			
Rotor/Shaft wk <sup>2</sup>	45.2 Lb-Ft <sup>2</sup>			
Ref Wdg	QT28042 NONE			
Sound Pressure @ 1M	- dBA			
VFD Rating	CONSTANT 2:1			
Outline Dwg				
Conn. Diag	005010.01			
Additional Specifications:				
0				
0				
EQUIV CKT (OHMS / PHASE)				
R1	R2	X1	X2	Xm
0.0147	0.0113	0.0608	0.1172	2.2854



**Speed - Torque Curve**

