

PRODUCT INFORMATION PACKET



Model No: 194004.00

Catalog No: 194004.00

SST Duck™ General Purpose Motor, 7.50 & 5 HP, 3 Ph, 60 & 50 Hz, 230/460 & 190/380 V,
3600 & 3000 RPM, 213TC Frame, TEFC



Regal and Leeson are trademarks of Regal Rexnord Corporation or one of its affiliated companies.

©2023 Regal Rexnord Corporation, All Rights Reserved. MC017097E



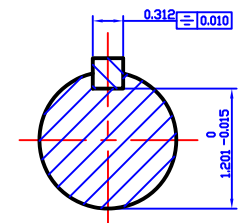
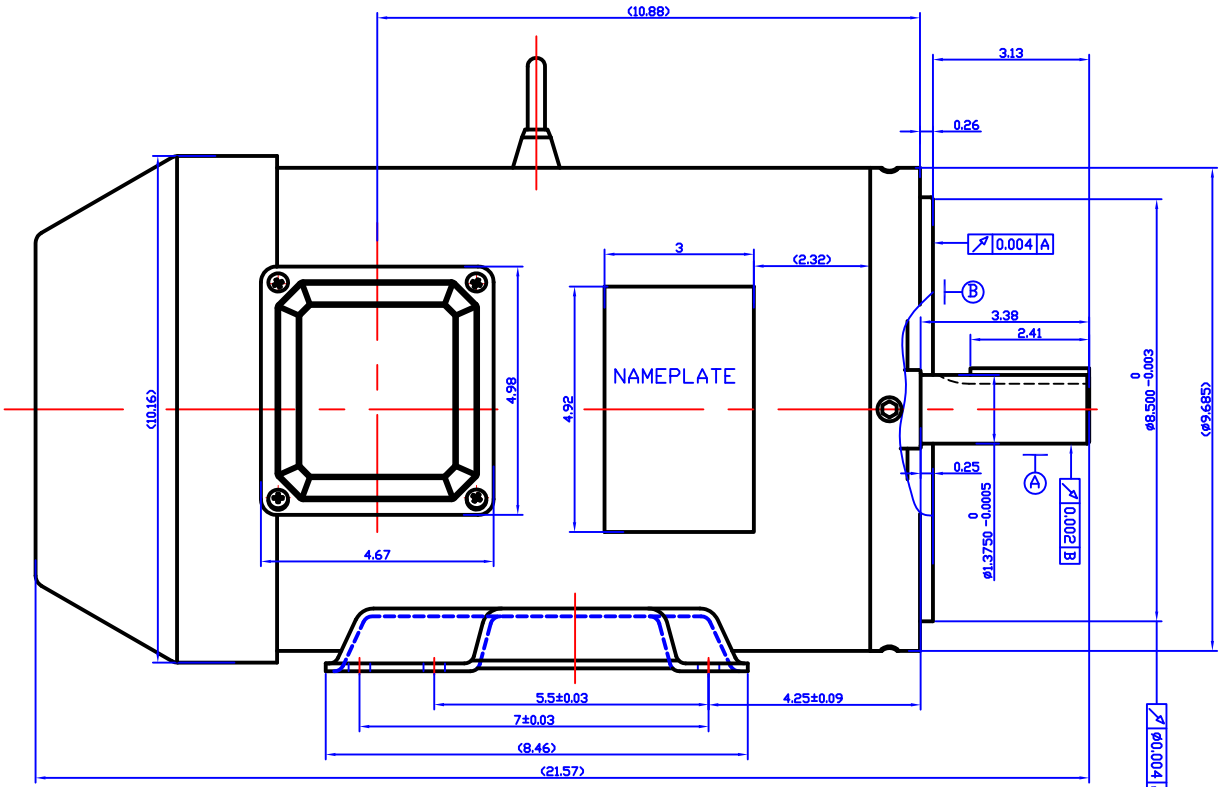
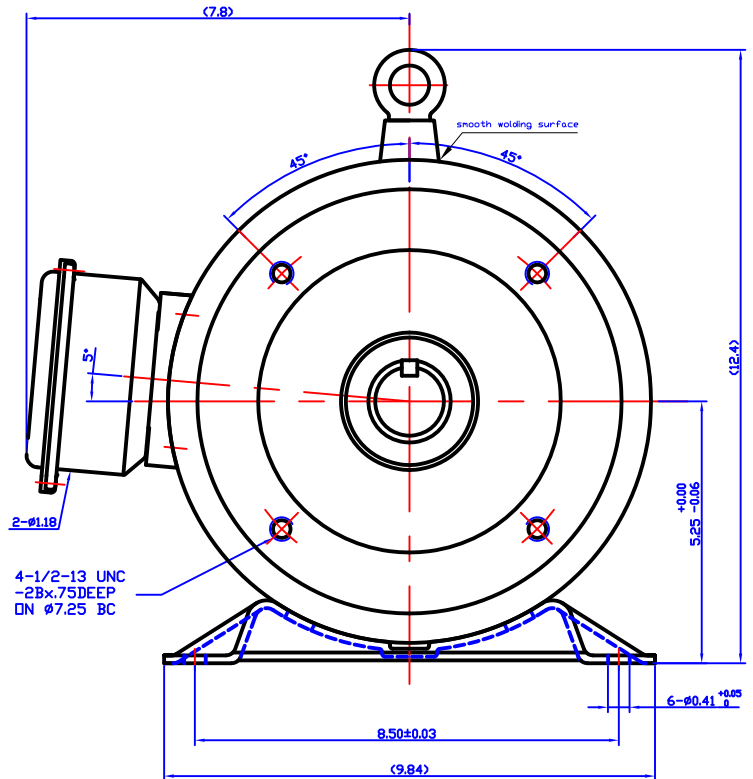


Nameplate Specifications

Phase	3	Output HP	7.50 & 5 Hp
Output KW	5.6 & 3.7 kW	Voltage	230/460 & 190/380 V
Speed	3520 & 2940 rpm	Service Factor	1.15 & 1.15
Frame	213TC	Enclosure	Totally Enclosed Fan Cooled
Thermal Protection	No Protection	Efficiency	89.5 & 91 %
Ambient Temperature	40 °C	Frequency	60 & 50 Hz
Current	17.4/8.7 & 14.2/7.1 A	Power Factor	89
Duty	Continuous	Insulation Class	F
Design Code	B	KVA Code	H
Drive End Bearing Size	6306	Opp Drive End Bearing Size	6306
UL	Recognized	CSA	Y
CE	Y	IP Code	55
Number of Speeds	1		

Technical Specifications

Electrical Type	Squirrel Cage Inverter Rated	Starting Method	Line Or Inverter
Poles	2	Rotation	Reversible
Resistance Main	1.184 Ohms	Mounting	Rigid Base
Motor Orientation	Horizontal	Drive End Bearing	Ball
Opp Drive End Bearing	Ball	Frame Material	Stainless Steel
Shaft Type	T	Overall Length	21.57 in
Frame Length	13.39 in	Shaft Diameter	1.375 in
Shaft Extension	3.38 in	Assembly/Box Mounting	F1 ONLY
Inverter Load	VARIABLE 10:1		
Outline Drawing	OL210TCSST	Connection Drawing	0050101.01



CAT NO.	GW MODEL NO	FRAME	HP	VOLTS	Hz	RPM	MOUNTING	S.F	DUTY	ENCL.	PH
194004.00	GWS7.5-2-213TC	213TC-2	7.5	230/460	60	3600	RIGID+C FLANGE	1.15	CONT.	TEFC	3
194288.00	GWS7.5-2-575-213TC	213TC-2	7.5	575	60	3600	RIGID+C FLANGE	1.15	CONT.	TEFC	3
194005.00	GWS7.5-4-213TC	213TC-4	7.5	230/460	60	1800	RIGID+C FLANGE	1.15	CONT.	TEFC	3
194106.00	GWS7.5-4-575-213TC	213TC-4	7.5	575	60	1800	RIGID+C FLANGE	1.15	CONT.	TEFC	3
194006.00	GWS10-2-215TC	215TC-2	10	230/460	60	3600	RIGID+C FLANGE	1.15	CONT.	TEFC	3
194107.00	GWS10-2-575-215TC	215TC-2	10	575	60	3600	RIGID+C FLANGE	1.15	CONT.	TEFC	3
194007.00	GWS10-4-215TC	215TC-4	10	230/460	60	1800	RIGID+C FLANGE	1.15	CONT.	TEFC	3
194108.00	GWS10-4-575-215TC	215TC-4	10	575	60	1800	RIGID+C FLANGE	1.15	CONT.	TEFC	3

DR BY: ZHAOQING 2016-08-18

APPD:

FIRST ANGLE PROJECTION

EDS DATE VERSION REV5

CONFIDENTIAL: THIS DRAWING AND ITS INFORMATION ARE THE EXCLUSIVE AND CONFIDENTIAL PROPERTY OF REGAL BELOIT CORPORATION AND ARE NOT TO BE DISCLOSED, DUPLICATED, DISTRIBUTED OR OTHERWISE USED WITHOUT THE WRITTEN CONSENT OF REGAL BELOIT CORPORATION

-ALL RIGHTS RESERVED.

REGAL REGAL-BELOIT CORPORATION

DESCRIPTION
OUTLINE OF SST MOTORS FOR 210 FR

SIZE A3 DWG NO **OL210TCSST**

SCALE 1:2 SHEET



CERTIFICATION DATA SHEET

1051 CHEYENNE AVE.
GRAFTON, WI 53024
PH. 262-377-8810

CATALOG #: 194004.00

CONN. DIAGRAM: 0050101.01

OUTLINE: OL210TCSST

MOUNTING: F1 ONLY

WINDING #: QT2101 FR 3 A

TYPICAL MOTOR PERFORMANCE DATA

HP	kW	SYNC. RPM	F.L. RPM	FRAME	ENCLOSURE	KVA CODE	DESIGN
7 1/2&5	5.60&3.70	2400	3520&2940	213TC	TEFC	H	B

PH	Hz	VOLTS	AMPS	START TYPE	DUTY	INSL	S.F.	AMB°C
3	60/50	230/460&190/380	17.4/8.7&14.2/7.1	LINE OR INVERTER	CONTINUOUS	F5	1.15/1.15	40

FULL LOAD EFF:	89.5&91	3/4 LOAD EFF:	93.7	1/2 LOAD EFF:	88.8	GTD. EFF	ELEC. TYPE
FULL LOAD PF:	89&87	3/4 LOAD PF:	83.6	1/2 LOAD PF:	78.7	0	SQ CAGE INV RATED

F.L. TORQUE	LOCKED ROTOR AMPS	L.R. TORQUE	B.D. TORQUE	F.L. RISE°C
11.2 LB-FT	131.4 / 65.7	19.8 LB-FT 180 %	35 LB-FT 318 %	0

SOUND PRESSURE @ 3 FT.	SOUND POWER	ROTOR WK^2	MAX. WK^2	SAFE STALL TIME	STARTS / HOUR	APPROX. MOTOR WGT
0 dBA	10 dBA	0 LB-FT^2	0 LB-FT^2	0 SEC.	2	0 LBS.

*** SUPPLEMENTAL INFORMATION ***

DE BRACKET TYPE	ODE BRACKET TYPE	MOUNT TYPE	ORIENTATION	SEVERE DUTY	HAZARDOUS LOCATION	DRIP COVER	SCREENS	PAINT
C-FACE	STANDARD	RIGID	HORIZONTAL	FALSE	NONE	FALSE	NONE	NO PAINT

BEARINGS		GREASE	SHAFT TYPE	SPECIAL DE	SPECIAL ODE	SHAFT MATERIAL	FRAME MATERIAL
DE	ODE						
BALL	BALL	POLYREX EM	T	NONE	NONE	303 STAINLESS (C-501)	STAINLESS STEEL
6306	6306						

THERMO-PROTECTORS				THERMISTORS	CONTROL	SPACE HEATERS
THERMOSTATS	PROTECTORS	WDG RTDs	BRG RTDs			
NONE	NOT	NONE	NONE	NONE	FALSE	NONE VOLTS

*
N
O
T
E
S

INVERTER TORQUE: VARIABLE 10:1
INV. HP SPEED RANGE: NONE
ENCODER: NONE
NONE NONE
NONE NONE PPR
BRAKE: NONE NONE
NONE P/N NONE
NONE NONE
NONE FT-LB NONE V NONE Hz

Data Sheet

Date: 1/19/2018

194004.00



Data @ 460 V

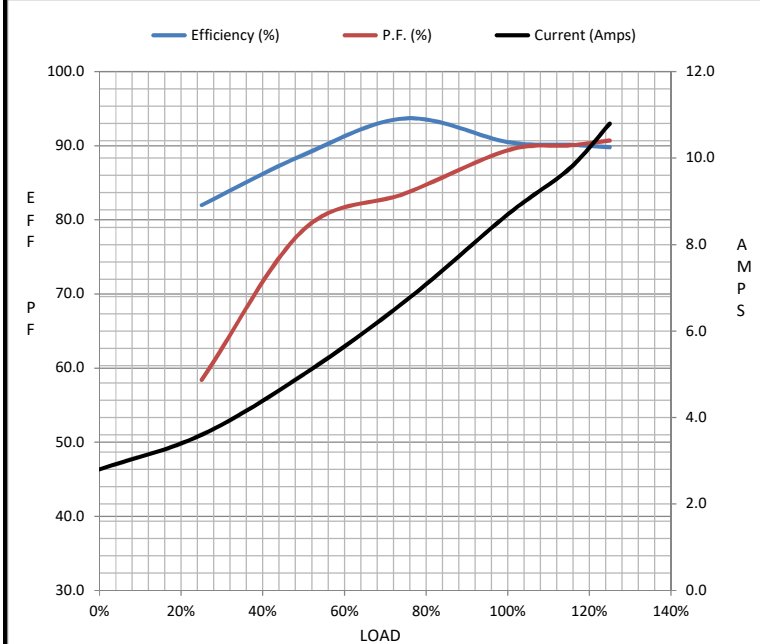
Motor Load Data

Load	0%	25%	50%	75%	100%	115%	125%	LR
Current (Amps)	2.80	3.6	5.0	6.7	8.7	9.8	10.8	65.7
Torque (ft-lb)	0.00	2.70	5.5	8.3	11.2	12.7	14.1	19.8
RPM	2400	3581	3563	3544	3524	3,515	3501	0
Efficiency (%)		82.0	88.8	93.7	90.5	90.2	89.8	
P.F. (%)	11.3	58.4	78.7	83.6	89.4	90.1	90.7	0.0

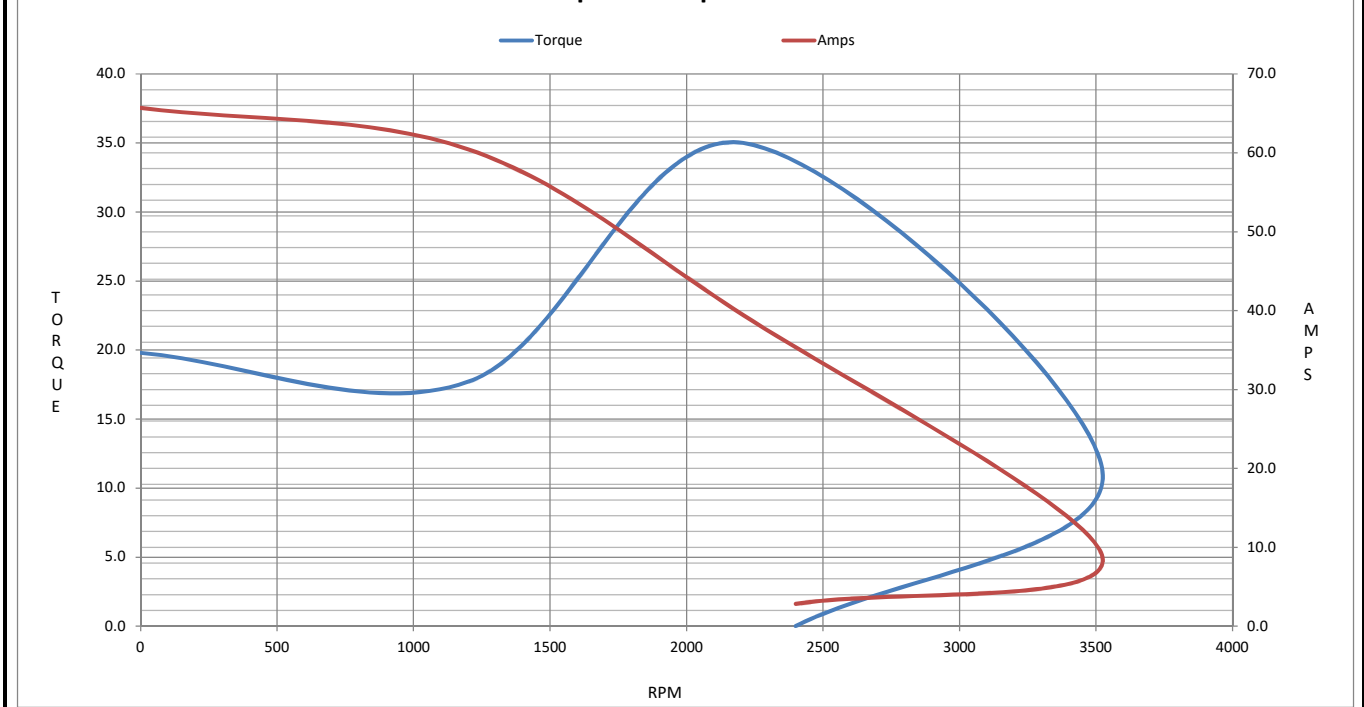
Motor Speed Data

	LR	Pull-Up	BD	Rated	Idle
Speed (RPM)	0	1200	2208	3524	2400
Current (Amps)	65.7	60.4	39.4	8.7	2.80
Torque (ft-lb)	19.8	17.7	35.0	11.2	0.00

Information Block				
HP	7.5			
Sync. RPM	2400			
Frame	TEFC			
Enclosure	TEFC			
Construction	NA			
Voltage	230/460#190/380 V			
Frequency	60 Hz			
Design	A			
LR Code letter	H			
Service Factor	1.15			
Temp Rise @ FL	61 °C			
Duty	CONT			
Ambient	40 °C			
Elevation	1,000 feet			
Rotor/Shaft wk ²	0.00 Lb-Ft ²			
Ref Wdg	QT2101 FR			
Sound Pressure @ 1M	0 dBA			
VFD Rating	VARIABLE 10:1			
Outline Dwg	OL210TCSST			
Conn. Diag	0050101.01			
Additional Specifications:				
0				
0				
EQUIV CKT (OHMS / PHASE)				
R1	R2	X1	X2	Xm
0.0000	0.0000	0.0000	0.0000	0.0000



Speed - Torque Curve



EC Declaration of Conformity

The undersigned representing
the manufacturer:

Regal Beloit America
100 East Randolph St.
Wausau, WI 54401

and the authorized representative
established within the Community:

Marathon Electric UK
6F Thistleton Road Ind. Estate
Market Overton
Oakham, Rutland LE15 7PP UK

are committed to providing customers with products that comply with applicable regulations and international protocols to which they are subject, including the requirements of the European Parliament Directive on the Harmonization of the laws relating to electrical equipment designed for use within certain voltage limits (2014/35/EU).

Regal Beloit America declares that the following product(s), to which this declaration relates, are in conformity with the relevant sections of the EC standards listed below.

This statement supersedes any statements previously issued pertaining to the product(s) listed below and is subject to change without notice.

Model No : 194004.00

(Model No. may contain prefix and/or suffix characters)

Catalog No : 194004.00

Rework No : N/A

Directives :

Low Voltage Directive 2014/35/EU

Harmonized Standards Used :

EN 60034-1: 2010 (IEC 60034-1: 2010)

EN 60034-5: 2001/A1:2007 (IEC 60034-5: 2000/A1:2006)

Authorized Representative:



Michael A. Logsdon
Vice President, Technology

Authorized Representative in the Community:



Julian Clark
Marketing Engineer

Created on 09/01/2022

CE 22