

PRODUCT INFORMATION PACKET



Model No: 193101.60

Catalog No: 193101.60

5.5HP..1740/1450RPM.112M.IP55.230/460V.3PH.60/50HZ.CONT.NOT.40C.1.15/1.15SF.B3.IEC Metric.C112T17FZ
1C

Regal and Leeson are trademarks of Regal Rexnord Corporation or one of its affiliated companies.

©2023 Regal Rexnord Corporation, All Rights Reserved. MC017097E





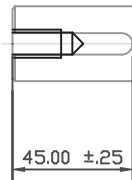
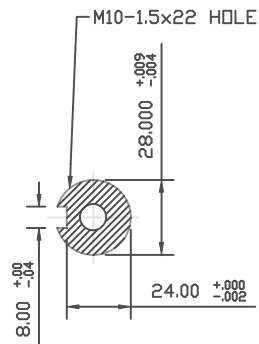
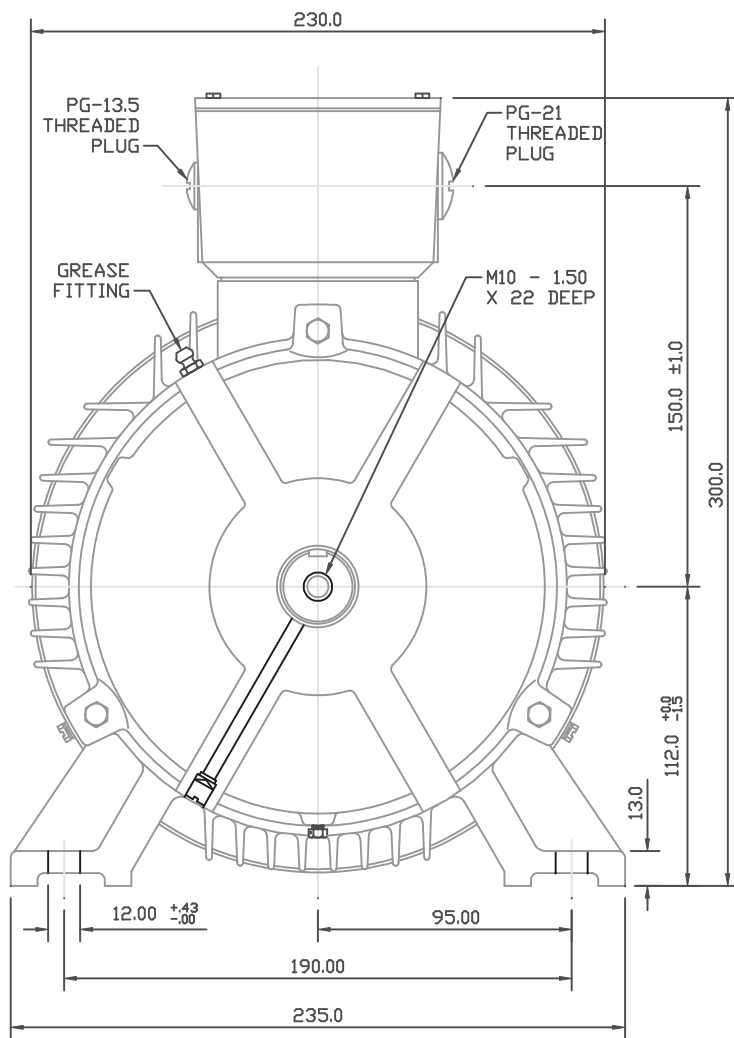
Nameplate Specifications

Phase	3	Output HP	5.50 & 5.50 Hp
Output KW	4.1 & 4.1 kW	Voltage	230/460 & 200/400 V
Speed	1740 & 1450 rpm	Service Factor	1.15 & 1.15
Frame	DF112M	Enclosure	IP55
Thermal Protection	No Protection	Efficiency	87.5 %
Ambient Temperature	40 °C	Frequency	60 & 50 Hz
Current	15./7.5 & 16.4/8.2 A	Power Factor	78.5
Duty	Continuous	Insulation Class	F
Design Code	B	KVA Code	J
Drive End Bearing Size	6306	Opp Drive End Bearing Size	6306
UL	Recognized	CSA	Y
CE	Y	IP Code	55
Number of Speeds	1		

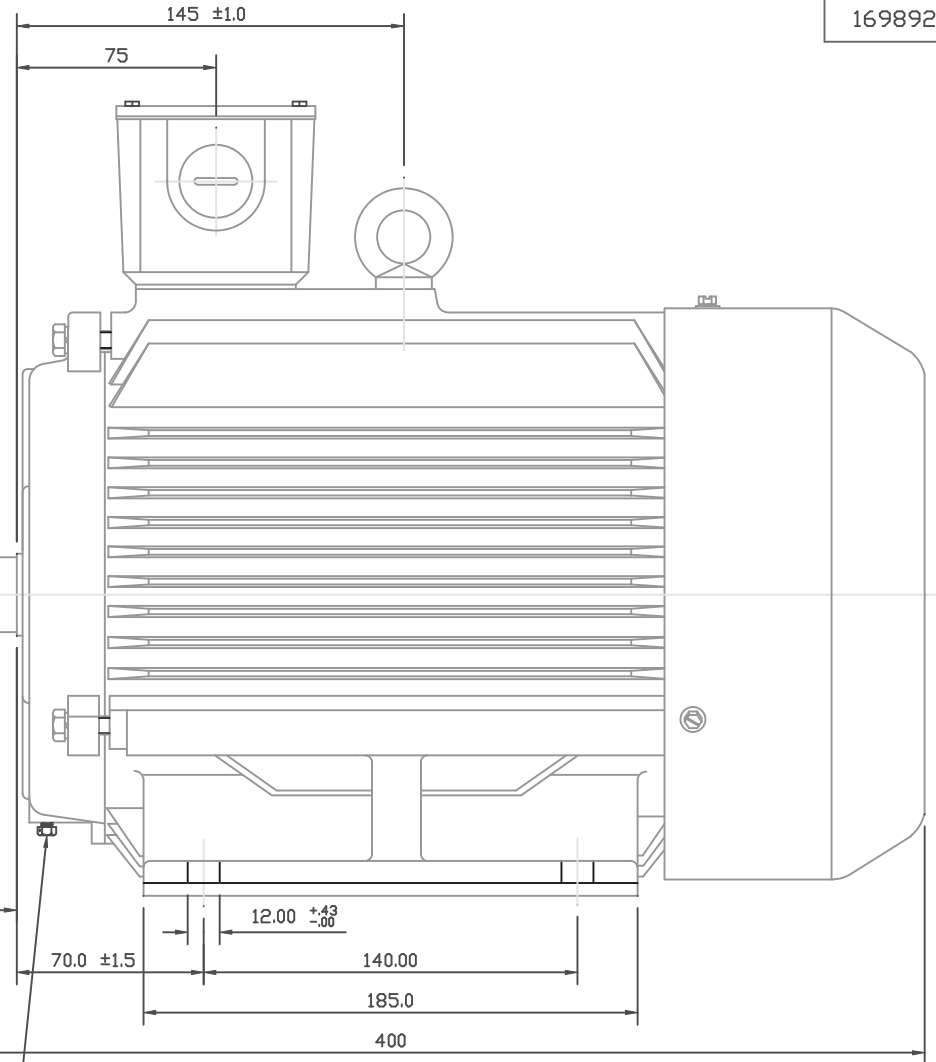
Technical Specifications

Electrical Type	Squirrel Cage Induction Run	Starting Method	Across The Line
Poles	4	Rotation	Reversible
Resistance Main	2.875 Ohms	Mounting	B3
Motor Orientation	Nan	Drive End Bearing	Ball
Opp Drive End Bearing	Ball	Frame Material	Cast Iron
Shaft Type	IEC	Assembly/Box Mounting	NAN
Outline Drawing	16989260	Connection Drawing	005465.01

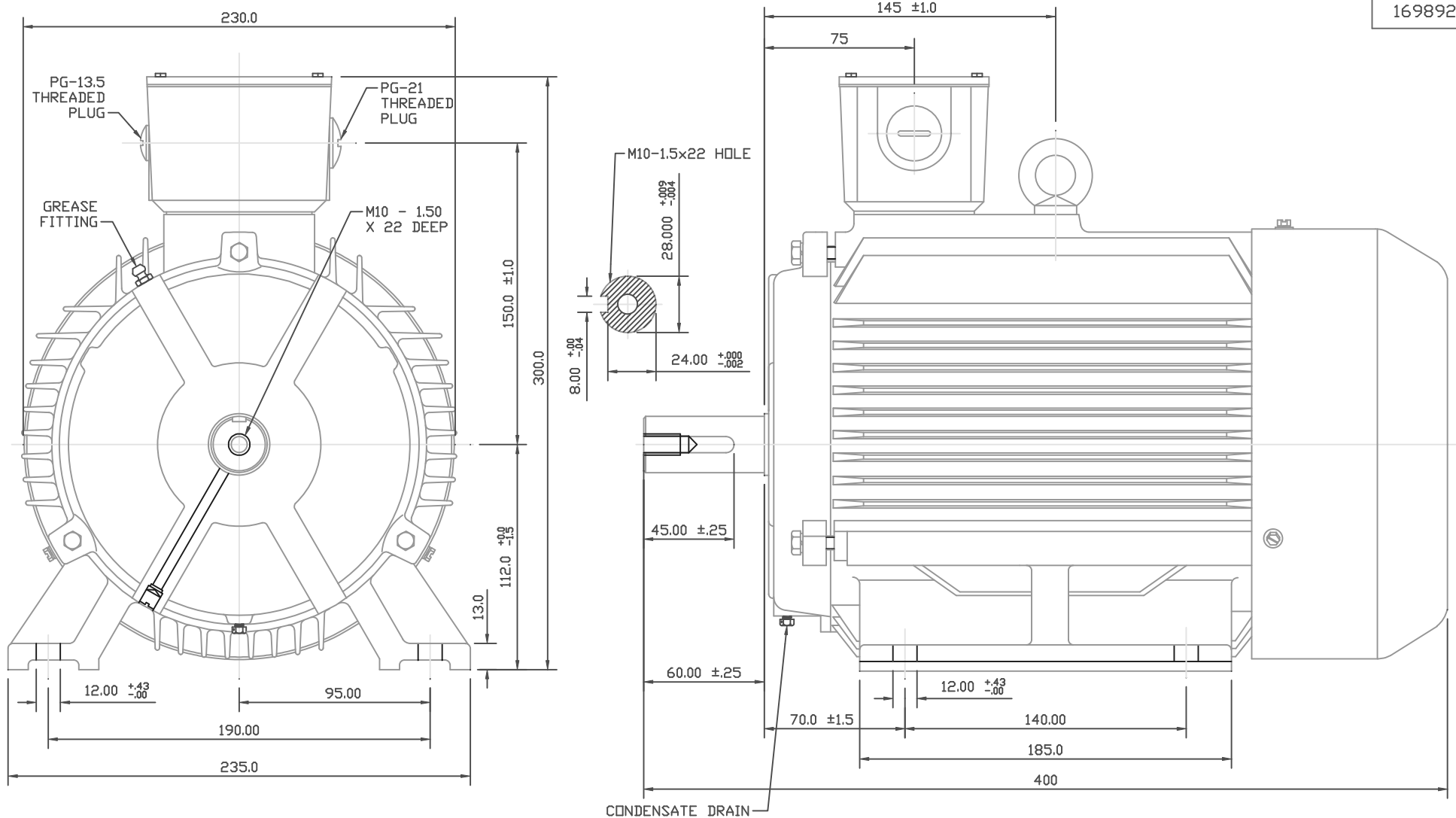
This is an uncontrolled document once printed or downloaded and is subject to change without notice. Date Created:06/22/2023



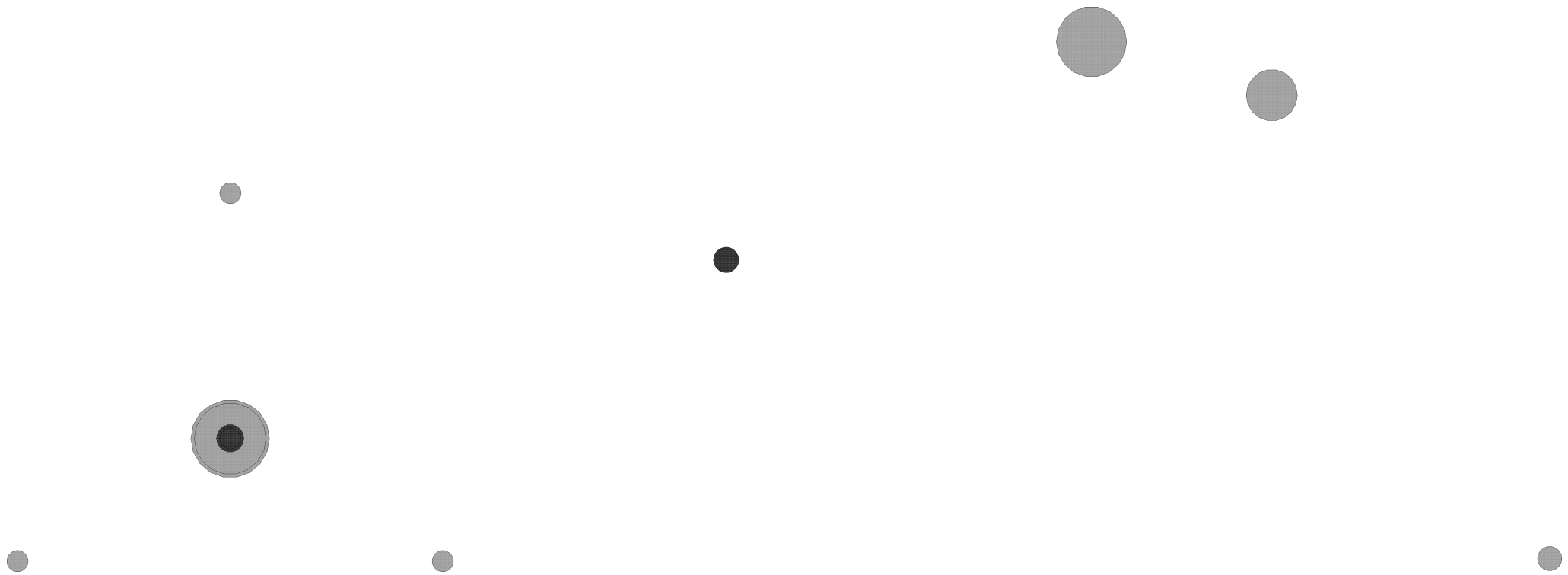
CONDENSATE DRAIN

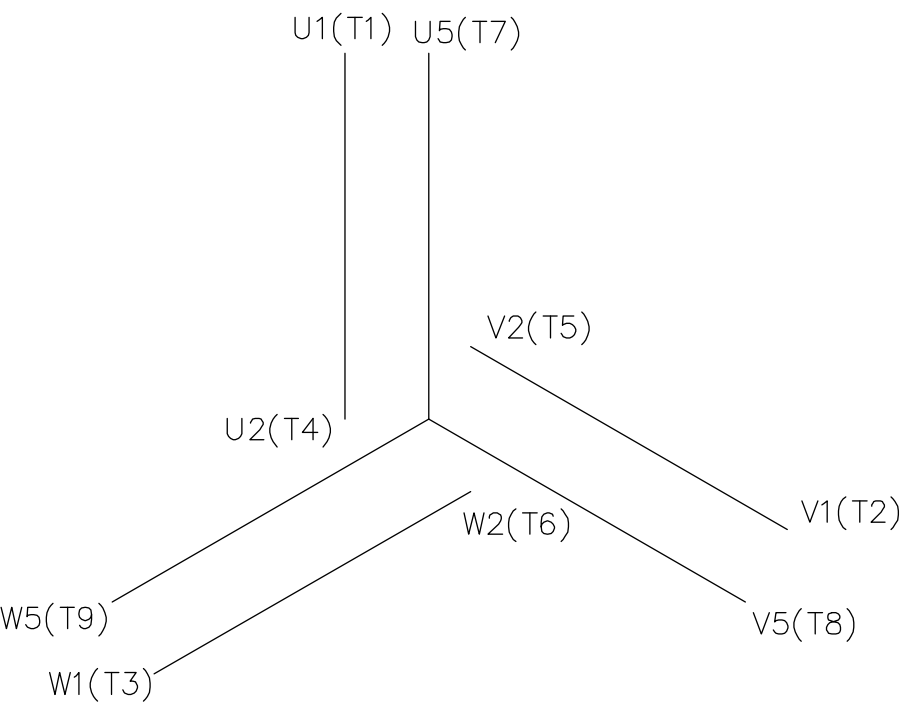


				TOLERANCES UNLESS SPECIFIED		LEESON	ELECTRIC MOTORS GEARMOTORS AND DRIVES	DRAWN
				DEC.	METRIC			
				.X	±.25			CHK
				.XX	±.76			APPD
				.XXX	±.127			SCALE 1=25.4
01	REDRAWN TO NEW STYLE	MGM 11/25/02		.XXXX	±.0127		TITLE OUTLINE DF112M (F3)	REF
NO.	REVISION	BY & DATE	CHK	ANG	±1/2"	MAT'L.	FINISH	FMT
THIS DRAWING IN DESIGN AND DETAIL IS OUR PROPERTY AND MUST NOT BE USED EXCEPT IN CONNECTION WITH OUR WORK. ALL RIGHTS OF DESIGN AND INVENTION ARE RESERVED. THIS IS AN ELECTRONICALLY GENERATED DOCUMENT - DO NOT SCALE THIS PRINT.						RFP	CAD FILE 16989260	SIZE B
						DIST		DRAWING NO. 169892-60



				TOLERANCES UNLESS SPECIFIED		LEESON	ELECTRIC MOTORS GEARMOTORS AND DRIVES	DRAWN
				DEC.	METRIC			
				.X	± 0.25			CHK
				.XX	± 0.76			APPD
				.XXX	± 1.27			SCALE 1=25.4
01	REDRAWN TO NEW STYLE	MGM 11/25/02		.XXXX	± 0.127			REF
NO.	REVISION	BY & DATE	CHK	ANG	$\pm 1/2^{\circ}$	MAT'L.	FINISH	FMT
THIS DRAWING IN DESIGN AND DETAIL IS OUR PROPERTY AND MUST NOT BE USED EXCEPT IN CONNECTION WITH OUR WORK. ALL RIGHTS OF DESIGN AND INVENTION ARE RESERVED. THIS IS AN ELECTRONICALLY GENERATED DOCUMENT - DO NOT SCALE THIS PRINT.						RFP	CAD FILE 16989260	SIZE B
						DIST		DRAWING NO. 169892-60






REF. DECAL (IEC) 080644
REF. DECAL (NEMA) 080446

IEC MARKINGS						
LOW VOLTAGE			HIGH VOLTAGE			
LINE VOLTAGE	L1	L2	L3	JOIN		
TERMINAL	U1	V1	W1	W2	U2	V2
LOW	U1,U5	V1,V5	W1,W5	---	U2,V2,W2	---
HIGH	U1	V1	W1	U2,U5	V2,V5	W2,W5

NEMA MARKINGS						
LOW VOLTAGE			HIGH VOLTAGE			
LINE VOLTAGE	L1	L2	L3	JOIN		
TERMINAL	U1	V1	W1	W2	U2	V2
LOW	T1, T7	T2, T8	T3, T9	---	T4,T5,T6	---
HIGH	T1	T2	T3	T4, T7	T5, T8	T6, T9

				TOLERANCES UNLESS SPECIFIED		 ELECTRIC MOTORS GEARMOTORS AND DRIVES		DRAWN		MGM 12/3/02			
				DEC.	INCHES			CHK					
				.X	±.1			APPD					
				.XX	±.01			SCALE 1=1					
				.XXX	±.005	TITLE EXTERNAL WIRING DIAGRAM 3 PHASE – DUAL VOLTAGE – W/TERM BLOCK				REF 00537703			
01	NEMA LV CONNECTION WAS INCORRECT		RLW 8/4/03		.XXXX	±.0005	MAT'L. IEC/NEMA MARKINGS				FMF		
NO.	REVISION		BY & DATE		CHK	ANG	±1/2"		FINISH THERMAL TRANSFER		PREV		
THIS DRAWING IN DESIGN AND DETAIL IS OUR PROPERTY AND MUST NOT BE USED EXCEPT IN CONNECTION WITH OUR WORK ALL RIGHTS OF DESIGN AND INVENTION ARE RESERVED THIS IS AN ELECTRONICALLY GENERATED DOCUMENT – DO NOT SCALE THIS PRINT					RFP			CAD FILE 00546501		SIZE	DRAWING NO.		REV.
					DIST					A	005465–01		01