

# PRODUCT INFORMATION PACKET

**marathon®**  
Motors

Model No: 182TTDBD6341  
Catalog No: K566  
Brake Motor



Regal and Marathon are trademarks of Regal Rexnord Corporation or one of its affiliated companies.  
©2023 Regal Rexnord Corporation, All Rights Reserved. MC017097E

**RegalRexnord**



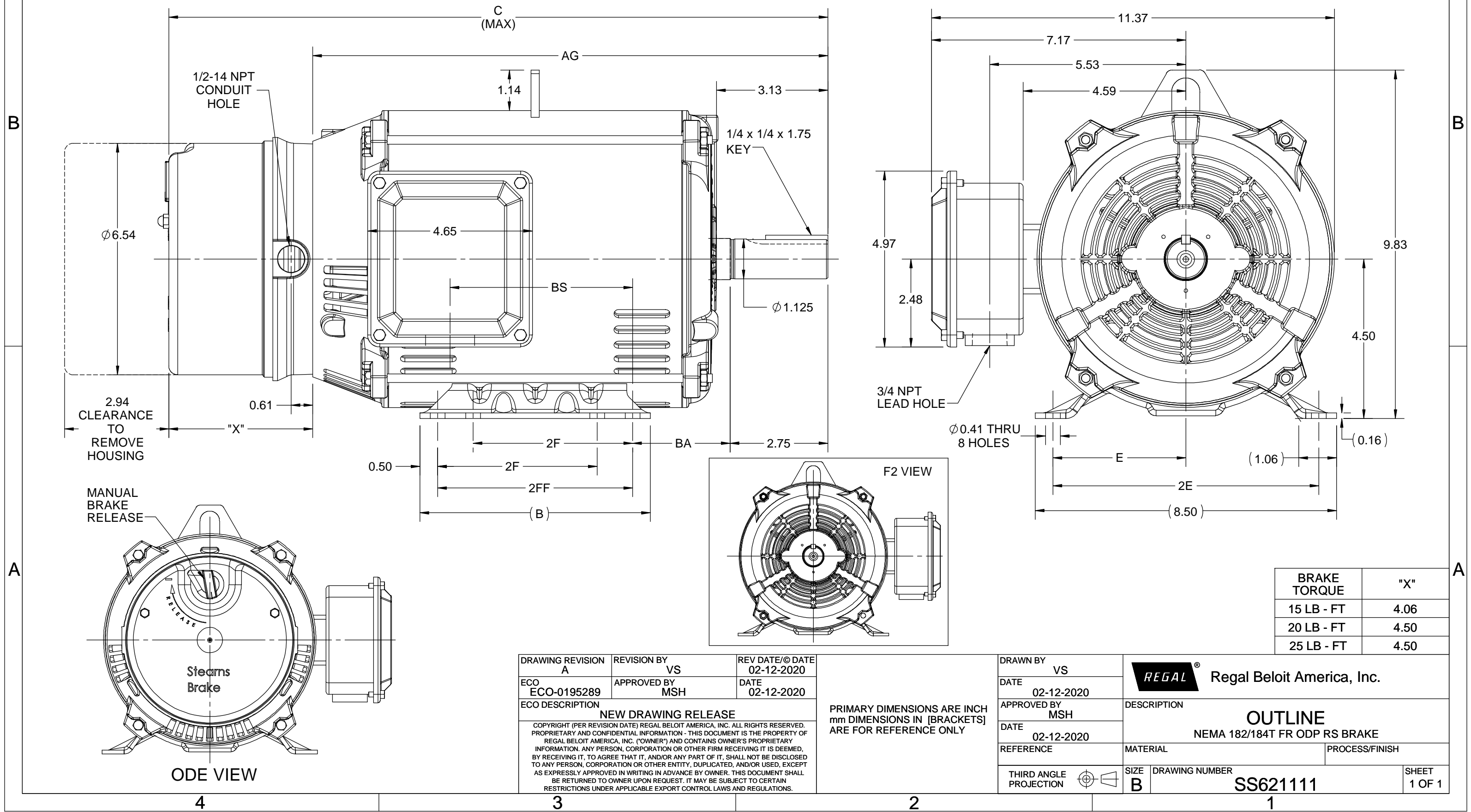
**Nameplate Specifications**

**Technical Specifications**

Shaft Diameter	1.125 in		
Outline Drawing	SS621111-100	Connection Drawing	EE7308

**This is an uncontrolled document once printed or downloaded and is subject to change without notice. Date Created:04/24/2023**

4				3				2				1
DASH NO.	B	C	E	2E	2F	2FF	AG	BA	BS	MOUNTING	FRAME	
100	6.50	18.03	3.75	7.50	4.50	5.50	13.53	2.75	4.15	F1 OR F2	182T	
200		19.03					14.53		5.15		184T	





NO.	REVISION	BY & DATE	CHK	ANG	TOLERANCES UNLESS SPECIFIED		DRAWN RM	11/20/1990
					DEC.	INCHES		
5	CHG TO REGAL LOGO	SL 09/10/2015	AB				CHK	ML 11/21/1990
4	REVISED IEC NOTATIONS	MSG 11/15/2011	CMN	.X	±.1		APPD	SAS 04/24/2003
3	ADDED IEC NOTATIONS... (U1), (V1) ETC. MU95194	MSG 5/10/2010	MJS	.XX	±.02		SCALE	1=1
2	ADDED THE OPTIONAL CORD CONNECTION MU46318	RDH 04/24/2003	DRS	.XXX	±.005		REF	
1	REDRAWN	RM 11/20/1990		.XXXX	±.0005		FMF	
					±7'30"		PREV	
THIS DRAWING IN DESIGN AND DETAIL IS OUR PROPERTY AND MUST NOT BE USED EXCEPT IN CONNECTION WITH OUR WORK ALL RIGHTS OF DESIGN AND INVENTION ARE RESERVED THIS IS AN ELECTRONICALLY GENERATED DOCUMENT – DO NOT SCALE THIS PRINT					RFP	CAD FILE ee7308	SIZE	DRAWING NO. PAGE OF REV.
					DIST WP		A	EE7308 5



P.O. BOX 8003  
WAUSAU, WI 54401-8003  
PH. 715-675-3311

DATA VOLTS: 460

### CERTIFICATION DATA SHEET

CUSTOMER:  
ORDER #:  
CONN. DIAGRAM: EE7308  
OUTLINE: SS621111-100  
WINDING: HA31124022 NONE 3  
SPEED:

CUSTOMER P.O. #:  
REFERENCE MODEL #: 182TTDBD6341  
CAT #: K566  
CUSTOMER PART #:  
MOUNTING: F1/F2 CAPABLE

### TYPICAL MOTOR PERFORMANCE DATA

HP	KW	SYNC RPM	FL RPM	FRAME	ENCLOSURE	TYPE	KVA CODE	DESIGN	
3	2.2	1800	1770	182T	DP	TDB	K	B	
PH	HZ	VOLTS	AMPS	START TYPE	DUTY	INSL	S.F.	AMB	ELEV.
3	60/50	230/460#190/380	8/4&6.8/3.4	ACROSS THE LINE	CONT	F	1.15	40	3300
F.L. EFF		89.5	3/4 LD EFF	89.5	1/2 LD EFF	88.0	GTD EFF	ELECT. TYPE	
F.L. PF		78.5	3/4 LD PF	71.0	1/2 LD PF	58.0	88.5	SQ CAGE IND RUN	
F.L. TORQUE		LR AMPS @ 460 V		L.R. TORQUE		B.D. TORQUE		F.L. RISE (° C)	
9.0	LB-FT	32.0		19.6	LB-FT	218%	27.6	LB-FT	307%
SOUND PRESSURE @ 3 FT.		SOUND	POWER	ROTOR WK²	MAX. LOAD WK²	SAFE STALL TIME	STARTS/HOUR	APPROX.	MOTOR WGT
61	dBA	70	dBA	0.40	LB-FT²	20	SEC.	2	70
*** SUPPLEMENTAL INFORMATION ***									
DE BRACKET TYPE		ODE BRACKET TYPE		MOUNT TYPE	MOTOR ORIENTATION	SEVERE DUTY	HAZARDOUS LOCATION	DRIP COVER	SCREENS
STANDARD		BRAKE		RIGID	HORIZONTAL	NO	NONE	YES	NONE
BEARINGS		GREASE		SHAFT TYPE		SPECIAL DE		SPECIAL ODE	
DE	ODE	POLYREX EM		T		NONE		NONE	
BALL	BALL							1045 HOT ROLLED (C-204)	
6206	6307							ROLLED STEEL	
THERMOSTATS		PROTECTORS		WDG RTD's		BRG RTD's		THERMISTORS	
NONE		NOT		NONE		NONE		NONE	
R1 (ohms/ph)		R2 (ohms/ph)		X1 (ohms/ph)		X2 (ohms/ph)		Xm (ohms/ph)	
2.334		1.37		5.387		5.387		118.125	
VIBRATION (in/sec)		FLOAT							
0.150		ODE							
* N O T E S *		INVERTER TORQUE: NONE INV. HP SPEED RANGE: NONE							
		ENCODER: NONE NONE NONE							
		BRAKE: STEARNS 56,000 NEMA 2 FT-LB: 15 VOLTAGE: 230/460							
PREPARED BY:		H2:							
DATE: 10/21/2021		UL: V - LI-ME-INS.CONST UL REC							

FORM: 3531 REV. 4 2/27/06

