

# PRODUCT INFORMATION PACKET



Model No: 192035.30

Catalog No: 192035.30

Obsolete Replaced by 192035.00..1/2HP-0.37kW..1800RPM.D71D.TEFC.230/460V.3PH.60HZ.CONT.40C..B3 / B5

\*\*\*\*\*



Regal and Leeson are trademarks of Regal Rexnord Corporation or one of its affiliated companies.

©2023 Regal Rexnord Corporation, All Rights Reserved. MC017097E





### Nameplate Specifications

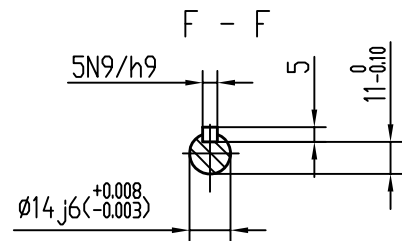
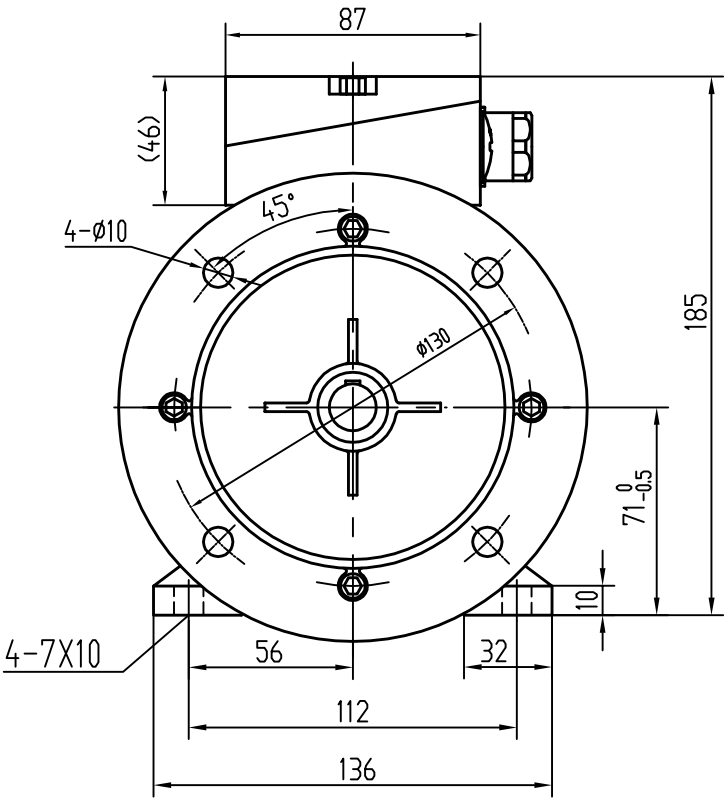
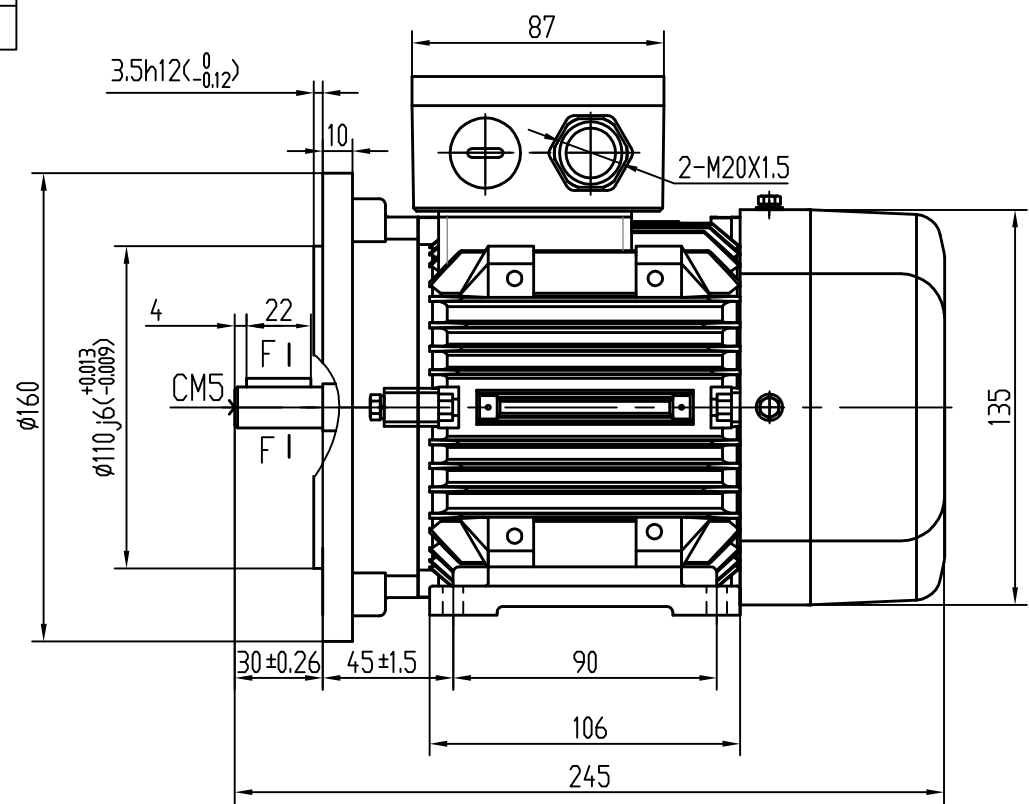
|                        |                     |                            |                             |
|------------------------|---------------------|----------------------------|-----------------------------|
| Phase                  | 3                   | Output HP                  | 0.50 & 0.50 Hp              |
| Output KW              | 0.37 & 0.37 kW      | Voltage                    | 230/460 & 200/400 V         |
| Speed                  | 1675 & 1350 rpm     | Service Factor             | 1.15 & 1.0                  |
| Frame                  | D71D                | Enclosure                  | Totally Enclosed Fan Cooled |
| Thermal Protection     | No Protection       | Efficiency                 | 72 & 68 %                   |
| Ambient Temperature    | 40 °C               | Frequency                  | 60 & 50 Hz                  |
| Current                | 2.0/1.0 & 2.2/1.1 A | Power Factor               | 65                          |
| Duty                   | Continuous          | Insulation Class           | F                           |
| Design Code            | NO DESIGN CODE      | KVA Code                   | H                           |
| Drive End Bearing Size | 6202                | Opp Drive End Bearing Size | 6202                        |
| UL                     | Recognized          | CSA                        | Y                           |
| CE                     | Y                   | IP Code                    | 55                          |
| Number of Speeds       | 1                   |                            |                             |

### Technical Specifications

|                       |                              |                       |                  |
|-----------------------|------------------------------|-----------------------|------------------|
| Electrical Type       | Squirrel Cage Inverter Rated | Starting Method       | Line Or Inverter |
| Poles                 | 4                            | Rotation              | Reversible       |
| Resistance Main       | 11.5 Ohms                    | Mounting              | B3               |
| Motor Orientation     | Horizontal Or Up Or Down     | Drive End Bearing     | Ball             |
| Opp Drive End Bearing | Ball                         | Frame Material        | Aluminum         |
| Shaft Type            | IEC                          | Assembly/Box Mounting | F3               |
| Inverter Load         | CONSTANT 20:1                |                       |                  |
| Outline Drawing       | OL19203530                   | Connection Drawing    | 00546505         |

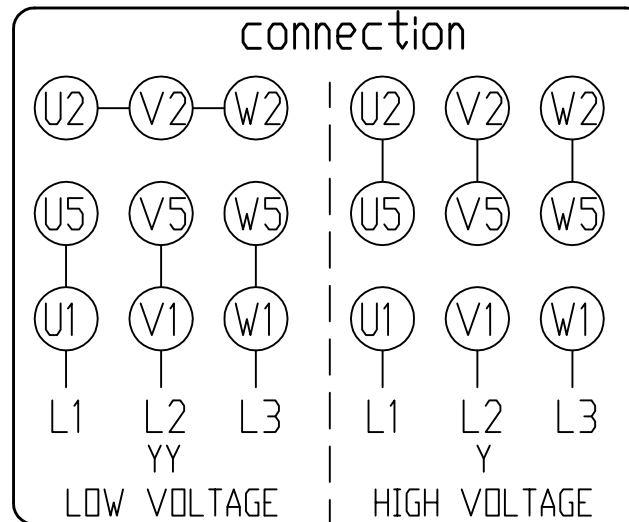
This is an uncontrolled document once printed or downloaded and is subject to change without notice. Date Created:06/22/2023


| CAT. NO.  |
|-----------|
| 192034.30 |
| 192044.30 |
| 192025.30 |
| 192035.30 |
| 192016.30 |



Bases are removable and able to mount in all locations - 6:00, 9:00, 3:00.

| TOLERANCES UNLESS SPECIFIED   |          |           |     | DRAWN  |             |
|---|----------|-----------|-----|--------|-------------|
| DEC.  | INCHES   |           |     | CHK    |             |
| X   | ±.1      |           |     | APPD   |             |
| XX  | ±.03     |           |     | SCALE  |             |
| XXX   | ±.005    |           |     | REF    |             |
| XXXX  | ±.0005   |           |     | FINF   |             |
| NO.   | REVISION | BY & DATE | CHK | ANG    | ±1/2        |
| THIS DRAWING IN DESIGN AND DETAIL IS OUR PROPERTY AND MUST NOT BE USED EXCEPT IN CONNECTION WITH OUR WORK. ALL RIGHTS OF DESIGN AND INVENTION ARE RESERVED. THIS IS AN ELECTRONICALLY GENERATED DOCUMENT - DO NOT SCALE THIS PRINT. |          |           |     | FINISH |             |
|   |          |           |     | RFP    | CAD FILE    |
|   |          |           |     | DIST   |             |
|   |          |           |     | SIZE   | DRAWING NO. |
|   |          |           |     | B      |             |
|   |          |           |     | REV.   |             |



|  |          |           |     |       |   |  |          |                                |       |
|--|----------|-----------|-----|-------|---|--|----------|--------------------------------|-------|
|  |          |           |     |       | TOLERANCES<br><del>(UNLESS SPECIFIED)</del> |  REGAL-BELOIT CORPORATION | DRAWN    |                                |       |
|  |          |           |     | DEC.  | INCHES                                      |  | CHK      |                                |       |
|  |          |           |     | .X    | ±.1   |  | APP'D    |                                |       |
|  |          |           |     | .XX   | ±.03  |  | TITLE    | 230V / 460V connection drawing | SCALE |
|  |          |           |     | .XXX  | ±.005                                       |  |          | YYY                            | REF   |
|  |          |           |     | .XXXX | ±.0005                                      |  | MAT'L    |                                | FNF   |
| NOL  | REVISION | BY & DATE | CHK | ANG   | ±1/2  | FINISH   |          | PREV                           |       |
| THIS DRAWING IN DESIGN AND DETAIL IS OUR PROPERTY AND MUST NOT BE USED EXCEPT IN CONNECTION WITH OUR WORK. ALL RIGHTS OF DESIGN AND INVENTION ARE RESERVED.<br>THIS IS AN ELECTRONICALLY GENERATED DOCUMENT - NO NET SCALE THIS PRINT. |          |           |     |       |   |  | SIZE     | DRAWING NO.                    | REV.  |
|  |          |           |     |       |   |  | B        |                                |       |
| RFP  |          |           |     |       |   |  | CAD FILE |                                |       |
| DIST   |          |           |     |       |   |  |          |                                |       |