

PRODUCT INFORMATION PACKET

Model No: 184UTFS4001

Catalog No: P419

Automotive Duty Motor, 2 HP, 3 Ph, 60 Hz, 460 V, 3600 RPM, 184U Frame, TEFC



Regal and are trademarks of Regal Rexnord Corporation or one of its affiliated companies.
©2022 Regal Rexnord Corporation, All Rights Reserved. MC017097E

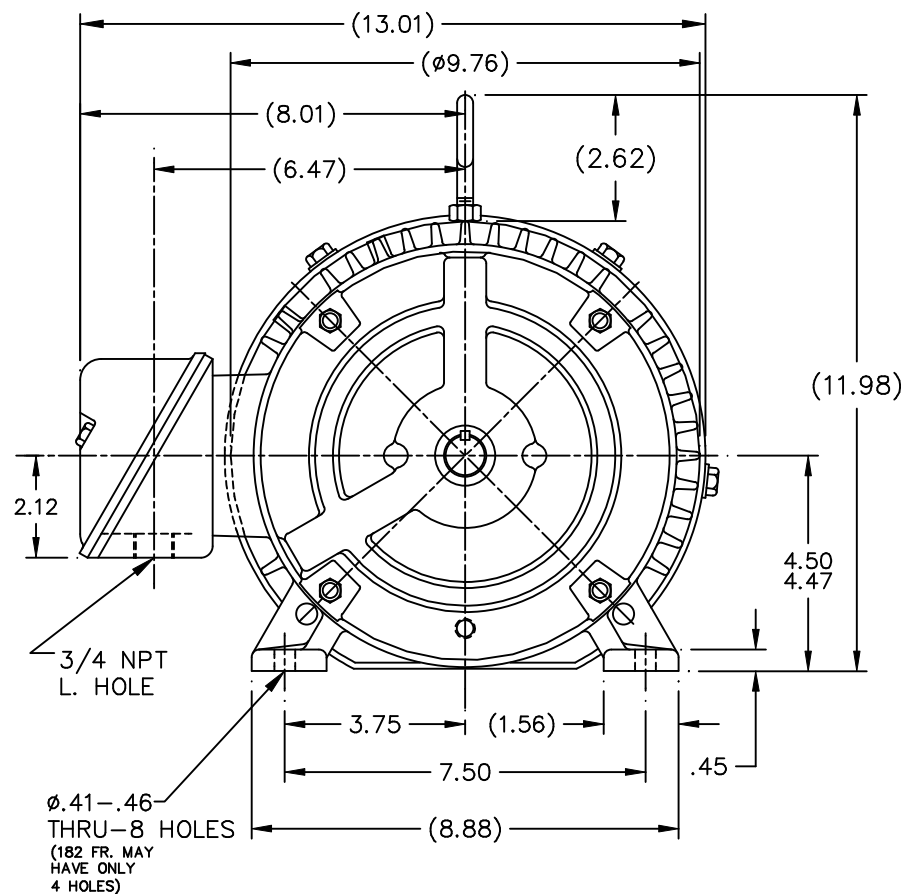
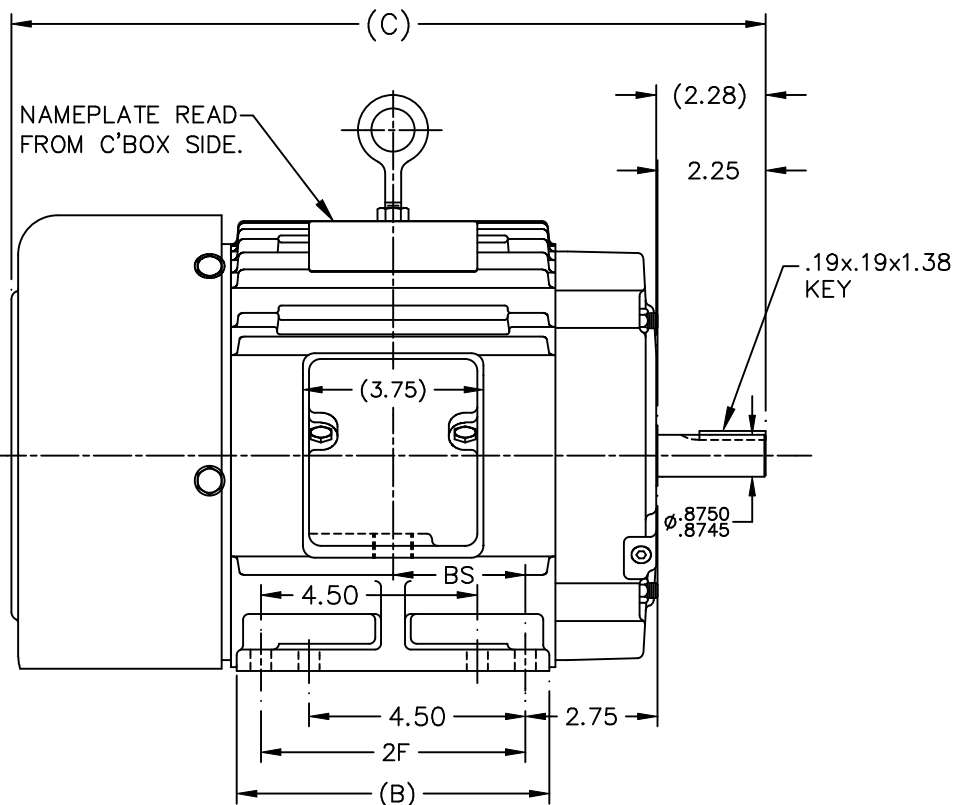
Nameplate Specifications

Output HP	2 Hp	Output KW	1.5 kW
Frequency	60 Hz	Voltage	460 V
Current	2.7 A	Speed	3510 rpm
Service Factor	1	Phase	3
Efficiency	85.5 %	Power Factor	84.6
Duty	Continuous	Insulation Class	F
Design Code	B	KVA Code	L
Frame	184U	Enclosure	Totally Enclosed Fan Cooled
Thermal Protection	No Protection	Ambient Temperature	65 °C
Drive End Bearing Size	6206	Opp Drive End Bearing Size	6205
UL	Recognized	CSA	Y
CE	Y	IP Code	43
Number of Speeds	1		

Technical Specifications

Electrical Type	Squirrel Cage Induction Run	Starting Method	Across The Line
Poles	2	Rotation	Reversible
Resistance Main	5.5 Ohms	Mounting	Rigid Base
Motor Orientation	Horizontal	Drive End Bearing	Ball
Opp Drive End Bearing	Ball	Frame Material	Cast Iron
Shaft Type	U	Overall Length	15.69 in
Frame Length	6.75 in	Shaft Diameter	0.875 in
Shaft Extension	2.28 in	Assembly/Box Mounting	F1/F2 Capable
Outline Drawing	A-SS69291-675	Connection Drawing	A-EE7300

This is an uncontrolled document once printed or downloaded and is subject to change without notice. Date Created:09/07/2022



DASH	FR.	C	B	2F	BS	MOUNTING
575	182U	14.69	5.50	4.50	2.25	F1 OR F2
675	182U	15.69	6.50	5.50	2.75	F1 ONLY
675	184U	15.69	6.50	5.50	2.75	F1 OR F2

BOX CAN BE MOUNTED ON OPPOSITE SIDE BY REMOVING BRACKETS & TURNING FRAME 180°.

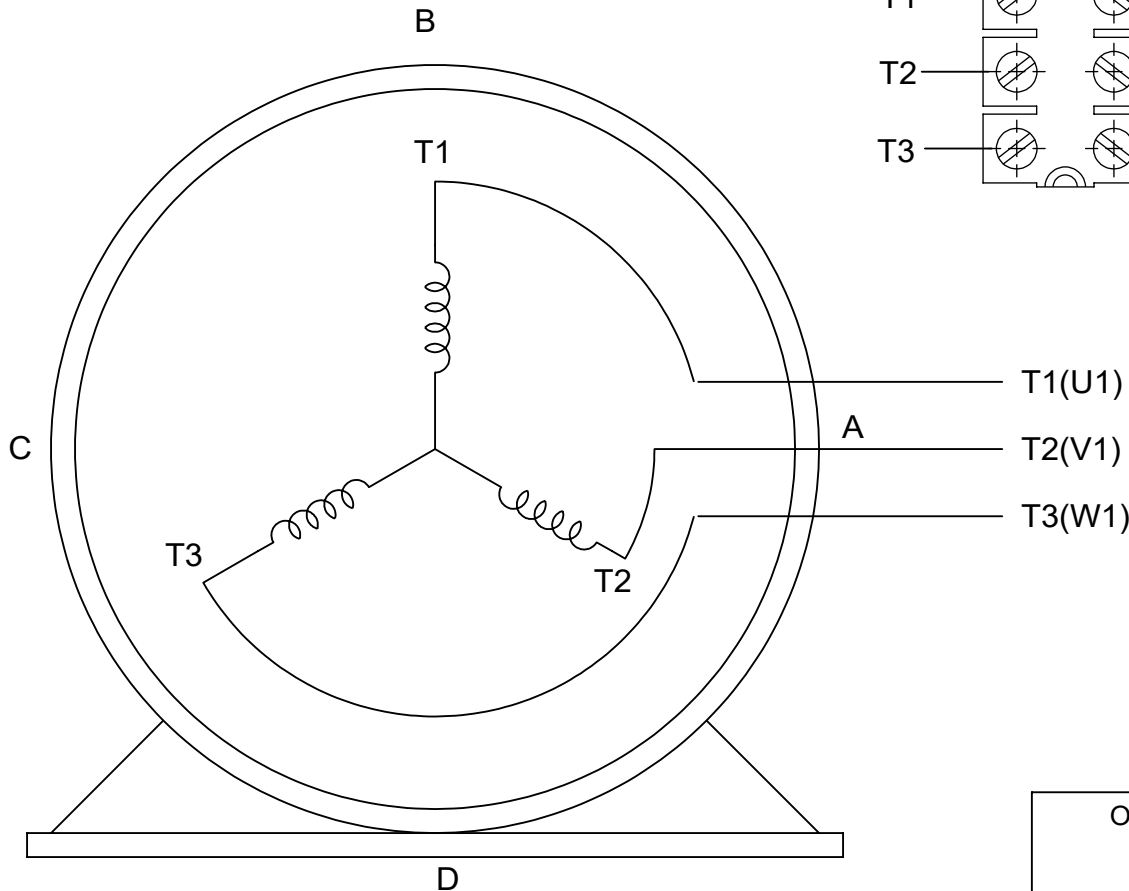
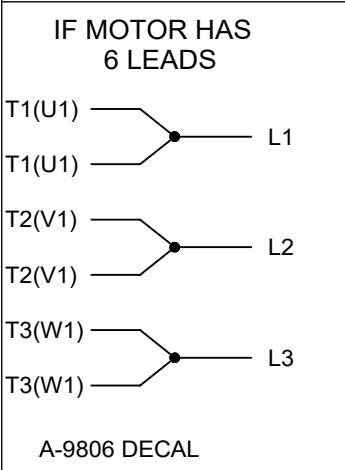
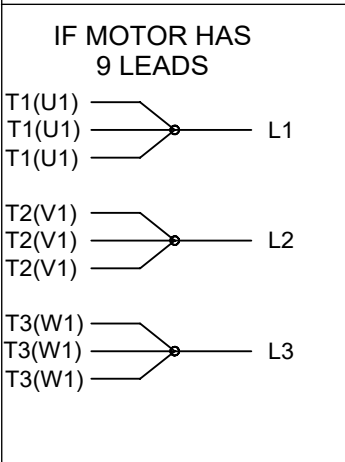
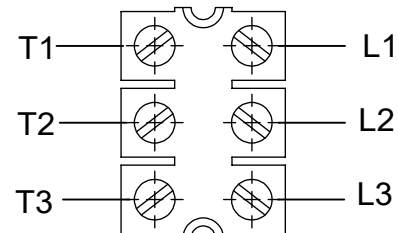
BOX CAN BE ROTATED IN 90° STEPS.

		TOLERANCES UNLESS SPECIFIED		MARATHON ELECTRIC		DRAWN TJB 11-12-2002	
		DEC.	INCHES			CHK	ML 11-13-2002
		.X	±.1			APPD	PH 11-13-2002
		.XX	±.03	TITLE OUTLINE		SCALE 1=4	
		.XXX	±.005	180U FR. BB TS		REF	
1	NEW DRAWING	MU43784	TJB 11-13-2002	PH	.XXXX ±.0005	MAT'L.	
NO.	REVISION	BY & DATE	CHK	ANG	±7'30"	FINISH	
THIS DRAWING IN DESIGN AND DETAIL IS OUR PROPERTY AND MUST NOT BE USED EXCEPT IN CONNECTION WITH OUR WORK ALL RIGHTS OF DESIGN AND INVENTION ARE RESERVED THIS IS AN ELECTRONICALLY GENERATED DOCUMENT - DO NOT SCALE THIS PRINT				RFP	CAD FILE SS69291	SIZE	DRAWING NO. PAGE OF REV.
				DIST	LB	A	SS69291 1

THREE PHASE - SINGLE VOLTAGE
MOTOR - CONDUIT BOX @ 'A'

TERMINAL BLOCK WHEN SPECIFIED

TO REVERSE ROTATION:
INTERCHANGE ANY TWO LINE
LEAD CONNECTIONS



VIEW OF TERMINAL END

OPTIONAL CORD CONNECTION

L1	WHITE
L2	RED
L3	BLACK

DRAWING REVISION AC	REVISION BY BS	REV DATE/© DATE 26/07/2022
REQUEST NUMBER CR-0010402	APPROVED BY SN	DATE 26/07/2022
REQUEST NUMBER DESCRIPTION DRAWING UPDATED		
<small>COPYRIGHT (PER REVISION DATE) REGAL BELOIT AMERICA, INC. ALL RIGHTS RESERVED. PROPRIETARY AND CONFIDENTIAL INFORMATION - THIS DOCUMENT IS THE PROPERTY OF REGAL BELOIT AMERICA, INC. ("OWNER") AND CONTAINS OWNER'S PROPRIETARY INFORMATION. ANY PERSON, CORPORATION OR OTHER FIRM RECEIVING IT IS DEEMED, BY RECEIVING IT, TO AGREE THAT IT, AND/OR ANY PART OF IT, SHALL NOT BE DISCLOSED TO ANY PERSON, CORPORATION OR OTHER ENTITY, DUPLICATED, AND/OR USED, EXCEPT AS EXPRESSLY APPROVED IN WRITING IN ADVANCE BY OWNER. THIS DOCUMENT SHALL BE RETURNED TO OWNER UPON REQUEST. IT MAY BE SUBJECT TO CERTAIN RESTRICTIONS UNDER APPLICABLE EXPORT CONTROL LAWS AND REGULATIONS.</small>		

PRIMARY DIMENSIONS ARE INCH
mm DIMENSIONS IN [BRACKETS]
ARE FOR REFERENCE ONLY

DRAWN BY DA
DATE 03-26-1993
APPROVED BY TB
DATE 03-26-1993
REFERENCE
THIRD ANGLE PROJECTION

		Regal Beloit America, Inc.	
DESCRIPTION CONNECTION DIAGRAM EXTERNAL - SINGLE VOLTAGE - 3Ø MOTOR			
MATERIAL		PROCESS/FINISH	
SIZE A	DRAWING NUMBER EE7300		SHEET 1 OF 1

Data Sheet

Date: 6/19/2017

Customer: _____

Attention: _____

Submitted by: FAREEDA DUDEKULA



184UTFS4001

Submittal

Data @ 460 V

Motor Load Data

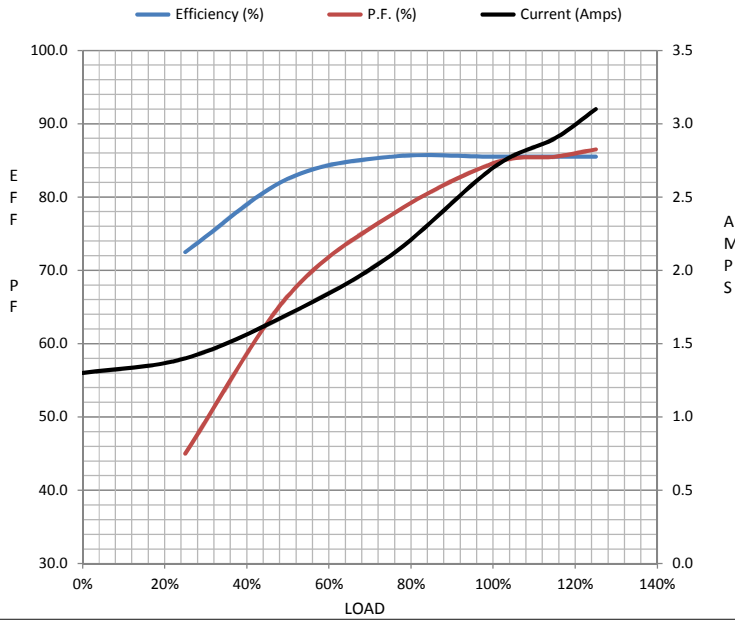
Load	0%	25%	50%	75%	100%	115%	125%	LR
Current (Amps)	1.30	1.40	1.70	2.10	2.70	2.90	3.1	22.5
Torque (ft-lb)	0.00	0.75	1.50	2.20	3.0	3.5	3.7	8.0
RPM	3600	3585	3565	3545	3510	3,500	3490	0
Efficiency (%)		72.5	82.5	85.5	85.5	85.5	85.5	
P.F. (%)	33.5	45.0	66.5	77.5	84.6	85.5	86.5	48.0

Motor Speed Data

	LR	Pull-Up	BD	Rated	Idle
Speed (RPM)	0	1755	2840	3510	3600
Current (Amps)	22.5	20.3	14.5	2.70	1.30
Torque (ft-lb)	8.0	6.8	12.0	3.0	0.00

Information Block

HP	2.0
Sync. RPM	3600
Frame	182
Enclosure	TEFC
Construction	TFS
Voltage	460 V
Frequency	60 Hz
Design	B
LR Code letter	L
Service Factor	1.15
Temp Rise @ FL	30 °C
Duty	CONT
Ambient	40 °C
Elevation	1,000 feet
Rotor/Shaft wk ²	0.18 Lb-Ft ²
Ref Wdg	K182272 NONE
Sound Pressure @ 1M	72 dBA
VFD Rating	NONE
Outline Dwg	A-SS69291-675
Conn. Diag	A-EE7300



Additional Specifications:

0

0

EQUIV CKT (OHMS / PHASE)

R1	R2	X1	X2	Xm
3.2640	2.6250	8.9680	4.3280	212.8500

Speed -Torque Curve

