

# PRODUCT INFORMATION PACKET



Model No: 184TTWW4026

Catalog No: N1616

Other Purpose Motor, 5 & 3 HP, 3 Ph, 60 & 50 Hz, 208-230/460 & 190/380 V, 1800 & 1500 RPM,  
184TC Frame, TEFC

Regal and Marathon are trademarks of Regal Rexnord Corporation or one of its affiliated companies.

©2023 Regal Rexnord Corporation, All Rights Reserved. MC017097E

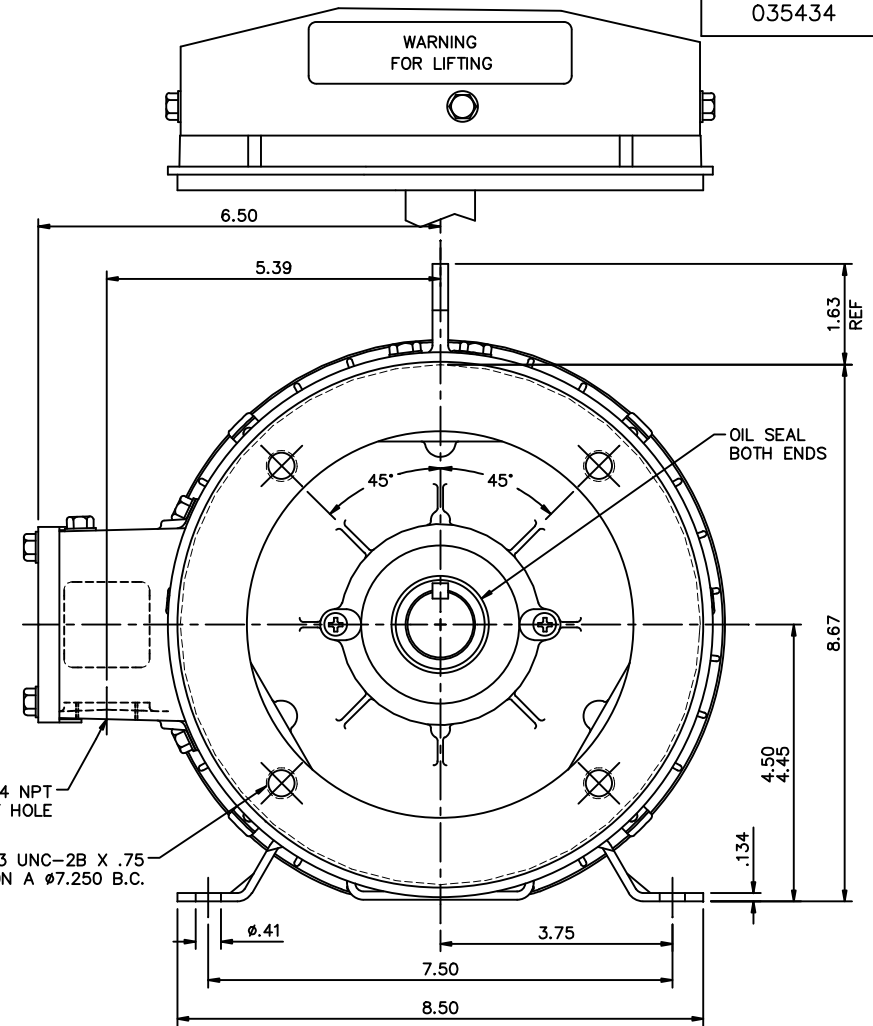
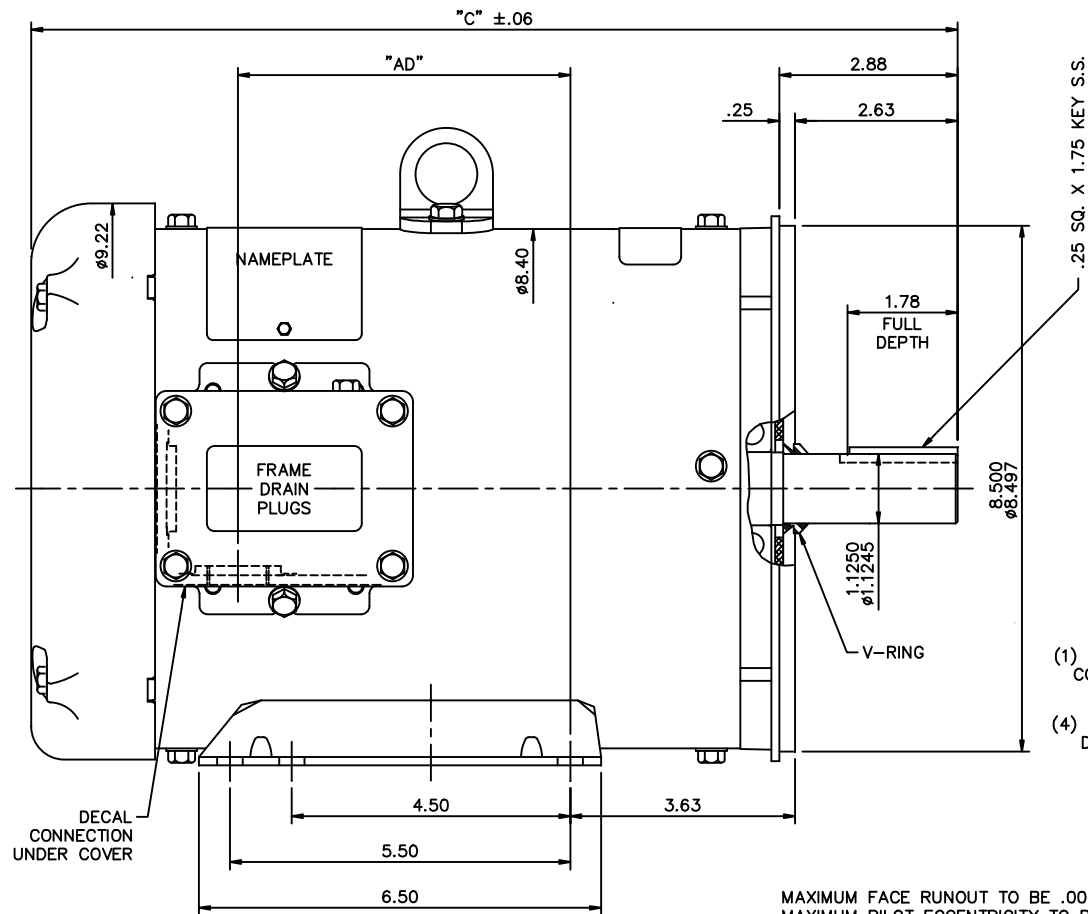


### Nameplate Specifications

Phase	3	Output HP	5 & 3 Hp
Output KW	3.7 & 2.2 kW	Voltage	208-230/460 & 190/380 V
Speed	1750 & 1470 rpm	Service Factor	1.15 & 1.15
Frame	184TC	Enclosure	Totally Enclosed Fan Cooled
Thermal Protection	No Protection	Efficiency	87.5 & 87.1 %
Ambient Temperature	40 °C	Frequency	60 & 50 Hz
Current	14-13/6.5 & 10.5/5.25 A	Power Factor	82.3
Duty	Continuous	Insulation Class	F
Design Code	B	KVA Code	J
Drive End Bearing Size	6207	Opp Drive End Bearing Size	6205
UL	Recognized	CSA	Y
CE	Y	IP Code	55
Number of Speeds	1		

### Technical Specifications

Electrical Type	Squirrel Cage Induction Run	Starting Method	Across The Line
Poles	4	Rotation	Reversible
Resistance Main	3.08 Ohms	Mounting	Rigid Base
Motor Orientation	Horizontal	Drive End Bearing	Ball
Opp Drive End Bearing	Ball	Frame Material	Rolled Steel
Shaft Type	T	Overall Length	14.47 in
Frame Length	9.00 in	Shaft Diameter	1.125 in
Shaft Extension	2.75 in	Assembly/Box Mounting	F1 ONLY
Connection Drawing	005010.01ME	Outline Drawing	035434-900



MAXIMUM FACE RUNOUT TO BE .004 T.I.R.  
 MAXIMUM PILOT ECCENTRICITY TO BE .004 T.I.R.  
 PERMISSIBLE SHAFT RUNOUT TO BE .002 T.I.R.

#### SPECIAL FEATURES:

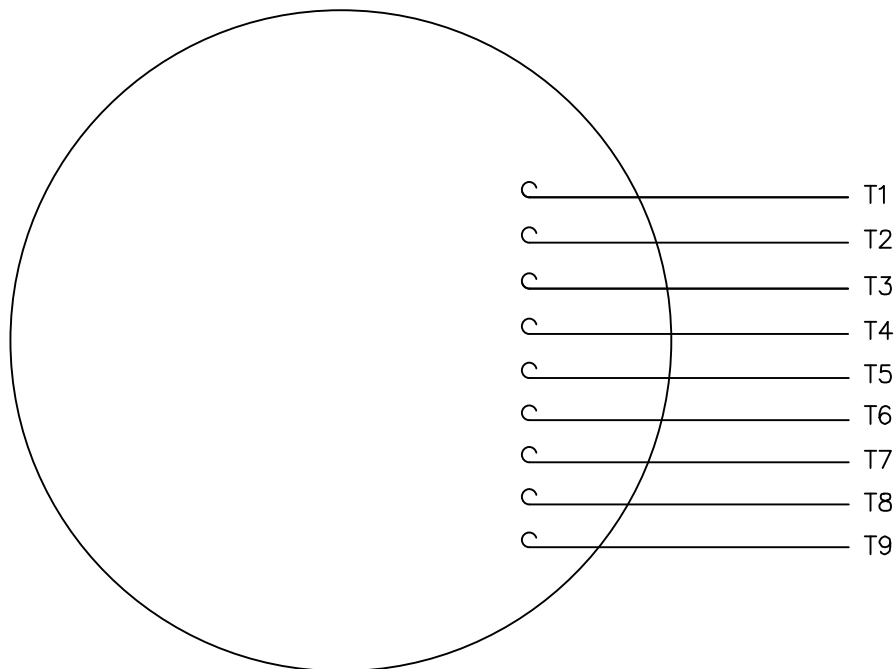
- 1) SHAFT SEALS & V-RING
- 2) DRAIN HOLES IN FRAME & CONDUIT BOX
- 3) STAINLESS STEEL SHAFT, HARDWARE & NAMEPLATE
- 4) GASKETS THROUGHOUT

DASH NO.	"C"	"AD"
850	13.97	4.37
900	14.47	4.87
950	14.97	5.37
1000	15.47	5.87
1050	15.97	6.37
1100	16.47	6.87
1150	16.97	7.37

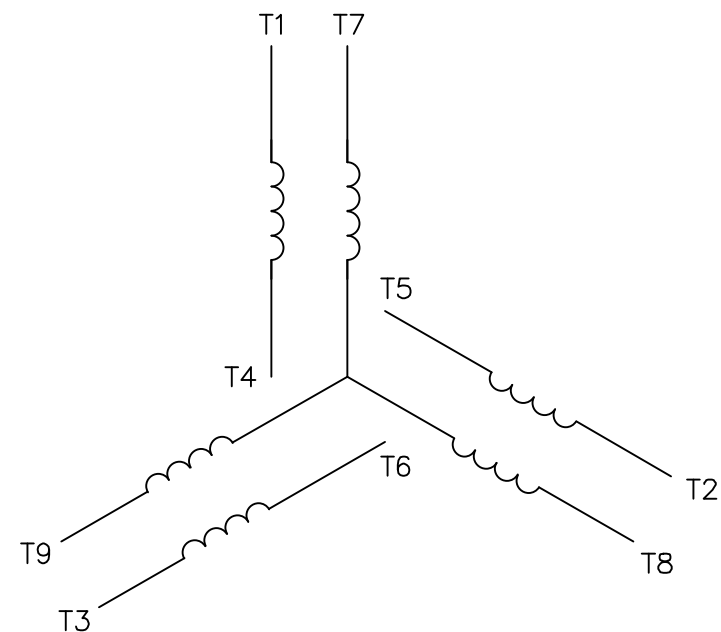
NO.	REVISION	BY & DATE	CHK	ANG	±1/2"	FINISH
05	UPDATED PER MT2 CONVERSION	LST 6/1/10	DEC.	INCHES		
04	ADDED DASH VALUE 850 FRAME.	ST 6/21/2007	.X	±.1		
03	ADDED CE DECAL PER ECR 85147	RDW 8/19/06	KH	.XX	±.03	
02	CORRECTED LOCATION OF DRAIN SCREW ON CON BOX	JK 9/19/03	.XXX	±.005		
01	REV'D CONDUIT BOX COVER MOUNTING, PER REDESIGN	MGM 5/15/03	.XXXX	±.0005		
THIS DRAWING IN DESIGN AND DETAIL IS OUR PROPERTY AND MUST NOT BE USED EXCEPT IN CONNECTION WITH OUR WORK. ALL RIGHTS OF DESIGN AND INVENTION ARE RESERVED. THIS IS AN ELECTRONICALLY GENERATED DOCUMENT - DO NOT SCALE THIS PRINT						
RFP	01/03/02	CAD FILE	035434	SIZE	B	DRAWING NO.
DIST	NLV					

MARATHON ELECTRIC		DRAWN	RDW 01/03/02
TITLE		CHK	
OUTLINE - 184TC FRAME		APPD	KMM 01.03/02
TEFC - RIGID "C"		SCALE	1=2
MAT'L		REF	
FINISH		FMF	G131171
REV.		PREV	
035434		05	


VIEW FROM OUTSIDE OF MOTOR AT SWITCH END.



## LINE LEADS



VOLTAGE	L1	L2	L3	JOIN & INSULATE
HIGH	T1	T2	T3	(T4,T7) (T5,T8) (T6,T9)
LOW	T1,T7	T2,T8	T3,T9	T4,T5,T6

				TOLERANCES UNLESS SPECIFIED			DRAWN RDW 04/12/02			
				DEC.	INCHES		CHK			
				.X	±.1		APPD			
				.XX	±.01		TITLE			
				.XXX	±.005	EXTERNAL WIRING DIAGRAM		SCALE 1=1		
				.XXXX	±.0005	3 PHASE W/O PROTECTOR		REF FIG.2—51		
						MAT'L. DECAL — 004014		FMF		
NO.	REVISION	BY & DATE	CHK	ANG	±1/2*	FINISH		PREV		
THIS DRAWING IN DESIGN AND DETAIL IS OUR PROPERTY AND MUST NOT BE USED EXCEPT IN CONNECTION WITH OUR WORK ALL RIGHTS OF DESIGN AND INVENTION ARE RESERVED THIS IS AN ELECTRONICALLY GENERATED DOCUMENT — DO NOT SCALE THIS PRINT			RFP	04/12/02		CAD FILE 00501001ME		SIZE	DRAWING NO.	REV.
			DIST				A	005010—01ME		