

PRODUCT INFORMATION PACKET

marathon®
Motors

Model No: 184TTWD6031

Catalog No: N407A

5 HP Washdown Motor, 3 phase, 1800 RPM, 230/460 V, 184TC Frame, TEFC
General Purpose Motors



Regal and Marathon are trademarks of Regal Rexnord Corporation or one of its affiliated companies.
©2021 Regal Rexnord Corporation, All Rights Reserved. MC017097E

RegalRexnord

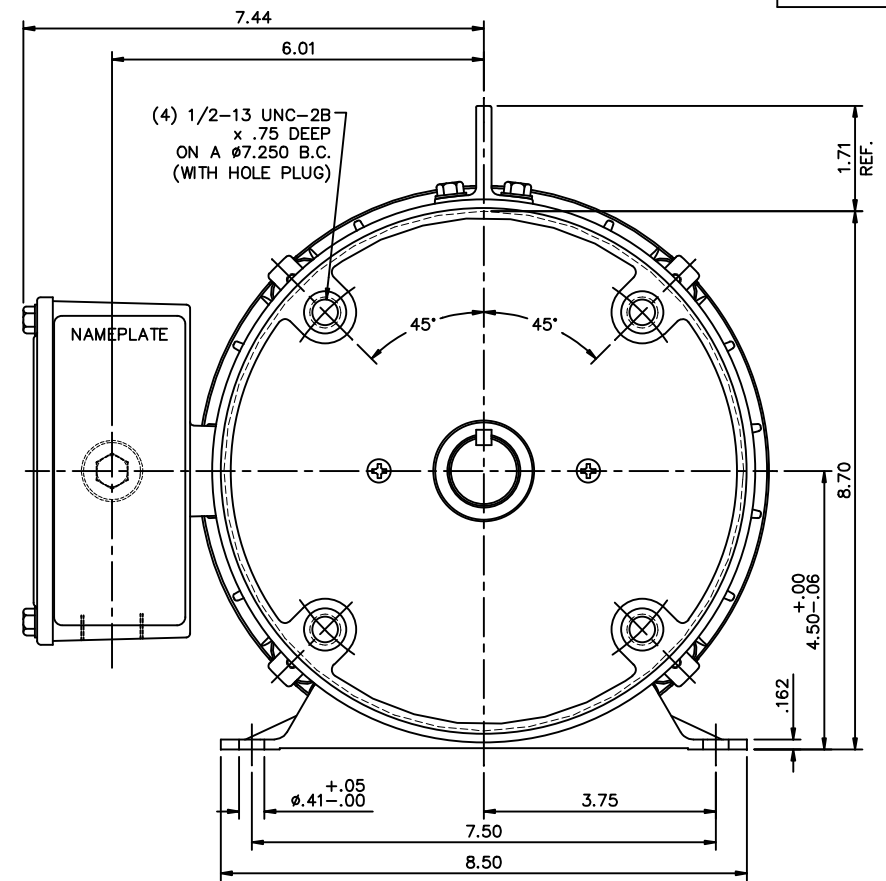
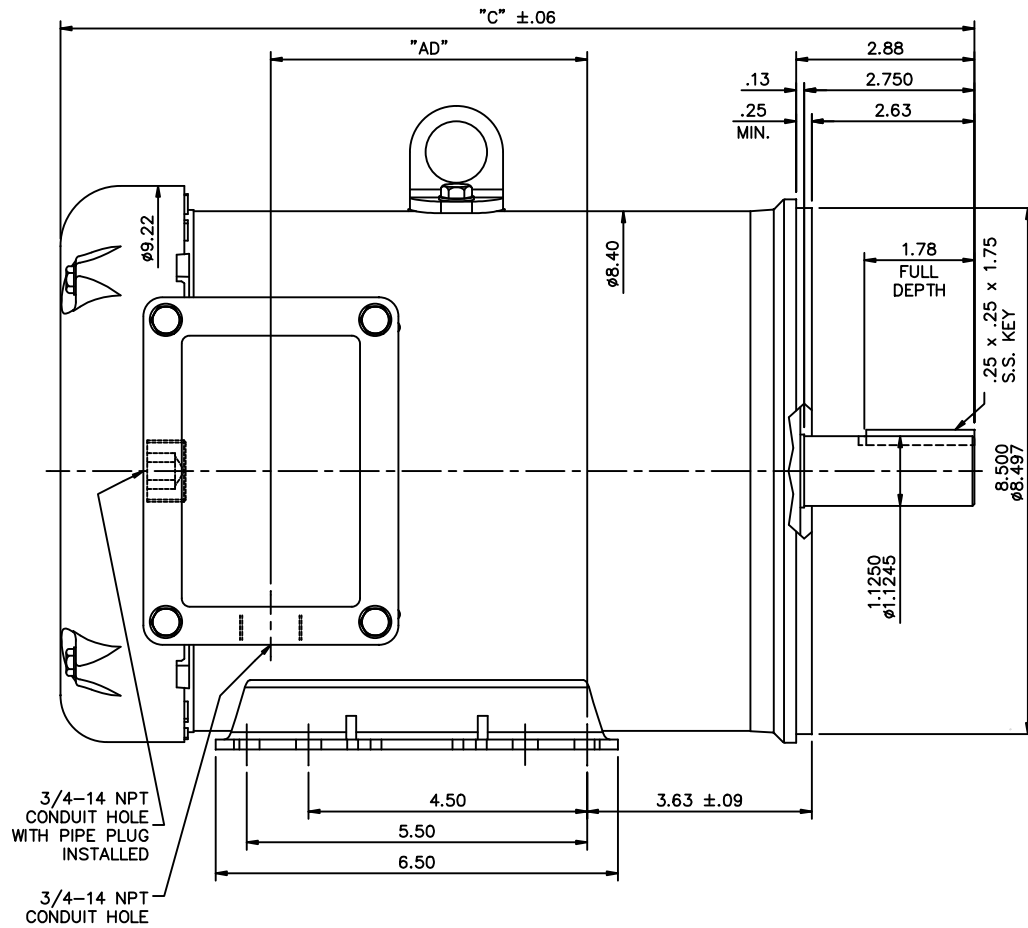
Nameplate Specifications

Output HP	5 Hp	Output KW	3.7 kW
Frequency	60 Hz	Voltage	230/460 V
Current	12.6/6.3 A	Speed	1760 rpm
Service Factor	1.15	Phase	3
Efficiency	89.5 %	Power Factor	83.1
Duty	Continuous	Insulation Class	F
Design Code	B	KVA Code	J
Frame	184TC	Enclosure	Totally Enclosed Fan Cooled
Thermal Protection	No	Ambient Temperature	40 °C
Drive End Bearing Size	6207	Opp Drive End Bearing Size	6207
UL	Recognized	CSA	Y
CE	Y	IP Code	55
Number of Speeds	1		

Technical Specifications

Electrical Type	Squirrel Cage Inverter Rated	Starting Method	Line Or Inverter
Poles	4	Rotation	Reversible
Resistance Main	2.68 Ohms	Mounting	Rigid Base
Motor Orientation	Horizontal	Drive End Bearing	Ball
Opp Drive End Bearing	Ball	Frame Material	Stainless Steel
Shaft Type	T	Overall Length	15.77 in
Frame Length	10.00 in	Shaft Diameter	1.125 in
Shaft Extension	2.87 in	Assembly/Box Mounting	F1/F2 Capable
Connection Drawing	005010.01ME	Outline Drawing	035437ME-1000

This is an uncontrolled document once printed or downloaded and is subject to change without notice. Date Created:10/12/2021



MAXIMUM FACE RUNOUT TO BE .004 T.I.R.
 MAXIMUM PILOT ECCENTRICITY TO BE .004 T.I.R.
 PERMISSIBLE SHAFT RUNOUT TO BE .002 T.I.R.

SPECIAL FEATURES:

- 1) DOUBLE LIP OIL SEALS BOTH ENDS.
- 2) GASKETS THROUGHOUT.
- 3) O-RING SEALED ENDBELLS & THRU BOLTS.
- 4) LOCKED BEARING W/SEALED LOCK SCREWS.

DASH NO.	"C"	"AD"
900	14.77	5.11
950	15.27	5.61

			TOLERANCES UNLESS SPECIFIED		MARATHON ELECTRIC	DRAWN JJK 04/04/02	
			DEC.	INCHES		CHK	
			.X	±.1		APPD	
			.XX	±.03	TITLE	OUTLINE - 180TC FRAME	SCALE 1=2
02	14.77 WAS 14.87, 15.27 WAS 15.37	JJK 09/25/03	.XXX	±.005		TEFC - RIGID "C"	REF OL6131167
01	ADDED HOLE PLUG PER ECO 03-617	LST 08/07/03	.XXXX	±.0005	MAT'L	STAINLESS STEEL DUCK	FMF G131901.00
NO.	REVISION	BY & DATE	CHK	ANG	±7°30"	FINISH	PREV
THIS DRAWING IN DESIGN AND DETAIL IS OUR PROPERTY AND MUST NOT BE USED EXCEPT IN CONNECTION WITH OUR WORK. ALL RIGHTS OF DESIGN AND INVENTION ARE RESERVED. THIS IS AN ELECTRONICALLY GENERATED DOCUMENT - DO NOT SCALE THIS PRINT			RFP			CAD FILE 035437ME	SIZE B DRAWING NO. 035437ME
			DIST	NLV			REV. 02

VIEW FROM OUTSIDE OF MOTOR AT SWITCH END.



LINE LEADS



VOLTAGE	L1	L2	L3	JOIN & INSULATE
HIGH	T1	T2	T3	(T4,T7) (T5,T8) (T6,T9)
LOW	T1,T7	T2,T8	T3,T9	T4,T5,T6

NO.	REVISION	BY & DATE	CHK	TOLERANCES UNLESS SPECIFIED		TITLE	DRAWN RDW 04/12/02
				DEC.	INCHES		
				.X	±.1	EXTERNAL WIRING DIAGRAM 3 PHASE W/O PROTECTOR	CHK
				.XX	±.01		APPD
				.XXX	±.005		SCALE 1=1
				.XXXX	±.0005		REF FIG.2-51
				ANG	±1/2°	MAT'L. DECAL - 004014	FMF
						FINISH	PREV
THIS DRAWING IN DESIGN AND DETAIL IS OUR PROPERTY AND MUST NOT BE USED EXCEPT IN CONNECTION WITH OUR WORK ALL RIGHTS OF DESIGN AND INVENTION ARE RESERVED THIS IS AN ELECTRONICALLY GENERATED DOCUMENT - DO NOT SCALE THIS PRINT				RFP	04/12/02	CAD FILE 00501001ME	SIZE A
				DIST			DRAWING NO. 005010-01ME
							REV.

CERTIFICATION DATA SHEET

Model#: 184TTWD6031 AA
CONN. DIAGRAM: 005010.01ME
OUTLINE: 035437ME-1000

WINDING#: T84170 FR 3
ASSEMBLY: F1/F2 CAPABLE

TYPICAL MOTOR PERFORMANCE DATA

HP	KW	SYNC. RPM	F.L. RPM	FRAME	ENCLOSURE	KVA CODE	DESIGN
5	3.70	1800	1760	184TC	TEFC	J	B

PH	Hz	VOLTS	FL AMPS	START TYPE	DUTY	INSL	S.F	AMB°C	ELEVATION
3	60	230/460	12.6/6.3	LINE OR INVERTER	CONTINUOUS	F4	1.15	40	3300

FULL LOAD EFF: 89.5	3/4 LOAD EFF: 90.2	1/2 LOAD EFF: 88.9	GTD. EFF	ELEC. TYPE	NO LOAD AMPS
FULL LOAD PF: 83.1	3/4 LOAD PF: 79.4	1/2 LOAD PF: 70.9	0	SQ CAGE INV RATED	4.8 / 2.4

F.L. TORQUE	LOCKED ROTOR AMPS	L.R. TORQUE	B.D. TORQUE	F.L. RISE°C
14.96 LB-FT	98 / 49	30.1 LB-FT 201	50.2 LB-FT 336	-

SOUND PRESSURE @ 3 FT.	SOUND POWER	ROTOR WK^2	MAX. WK^2	SAFE STALL TIME	STARTS /HOUR	APPROX. MOTOR WGT
0 dBA	10 dBA	0.485 LB-FT^2	0 LB-FT^2	10 SEC.	0	0 LBS.

*** SUPPLEMENTAL INFORMATION ***

DE BRACKET TYPE	ODE BRACKET TYPE	MOUNT TYPE	ORIENTATION	SEVERE DUTY	HAZARDOUS LOCATION	DRIP COVER	SCREENS	PAIN
C-FACE	STANDARD	RIGID	HORIZONTAL	FALSE	NONE	FALSE	NONE	NO PAINT

BEARINGS		GREASE	SHAFT TYPE	SPECIAL DE	SPECIAL ODE	SHAFT MATERIAL	FRAME MATERIAL
DE	OPE						
BALL	BALL						
6207	6207	POLYREX EM	T	NONE	NONE	303 STAINLESS (C-501)	STAINLESS STEEL

THERMO-PROTECTORS				THERMISTORS	CONTROL	SPACE /n HEATERS
THERMOSTATS	PROTECTORS	WDG RTDs	BRG RTDs			
NONE	NOT	NONE	NONE	NONE	FALSE	NONE VOLTS

If Inverter equals NONE, contact factory for further information

* N O T E S *	INVERTER TORQUE: CONSTANT 3:1		
	INV. HP SPEED RANGE: NONE		
	ENCODER: NONE		
	NONE NONE		
	NONE NONE PPR		
	BRAKE: NONE NONE		
	NONE P/N NONE		
	NONE NONE		
	NONE FT-LB	NONE V	NONE Hz

DATE: 06/21/2017 11:44:33 AM
 FORM 3531 REV.3 02/07/99

** Subject to change without notice.

Data Sheet

Date: 6/19/2017

Customer: _____

Attention: _____

Submitted by: FAREEDA DUDEKULA



184TTWD6031

Submittal

Data @ 460 V

Motor Load Data

Load	0%	25%	50%	75%	100%	115%	125%	LR	
Current (Amps)	2.40	2.80	3.7	4.9	6.3	7.2	7.8	49.0	
Torque (ft-lb)	0.00	3.7	7.4	11.1	15.0	17.4	18.8	30.1	
RPM	1800	1790	1779	1768	1760	1,747	1742	0	
Efficiency (%)		85.9	88.9	90.2	89.5	89.3	88.0		
P.F. (%)	6.8	48.8	70.9	79.4	83.1	84.2	85.3	0.0	

Motor Speed Data

	LR	Pull-Up	BD	Rated	Idle					
Speed (RPM)	0	900	1656	1760	1800					
Current (Amps)	49.0	45.1	29.4	6.3	2.40					
Torque (ft-lb)	30.1	29.8	50.2	15.0	0.00					
<div><div>— Efficiency (%) — P.F. (%) — Current (Amps)</div><div>EFFICIENCY (%)</div><div>P.F. (%)</div><div>CURRENT (AMPS)</div><div>LOAD</div></div>						Information Block				
						HP		5.0		
						Sync. RPM		1800		
						Frame		184		
						Enclosure		TEFC		
						Construction		TFW		
						Voltage		230/460 V		
						Frequency		60 Hz		
						Design		B		
						LR Code letter		J		
						Service Factor		1.15		
						Temp Rise @ FL		65 °C		
						Duty		CONT		
						Ambient		40 °C		
						Elevation		1,000 feet		
						Rotor/Shaft wk²		0.49 Lb-Ft²		
						Ref Wdg		T84170 FR		
Sound Pressure @ 1M		55 dBA								
VFD Rating		CONSTANT 3:1								
Outline Dwg		035437ME-1000								
Conn. Diag		005010.01ME								
Additional Specifications:										
0										
0										
EQUIV CKT (OHMS / PHASE)										
R1		R2		X1		X2		Xm		
0.0000		0.0000		0.0000		0.0000		0.0000		

Speed -Torque Curve

