

# PRODUCT INFORMATION PACKET

Model No: 184TTTTY16076

Catalog No: C402A

Brake Motor, 1.50 & 1 HP, 3 Ph, 60 & 50 Hz, 230/460 & 190/380 V, 1200 & 1000 RPM, 184TC Frame, TENV



Regal and Marathon are trademarks of Regal Rexnord Corporation or one of its affiliated companies.

©2023 Regal Rexnord Corporation, All Rights Reserved. MC017097E



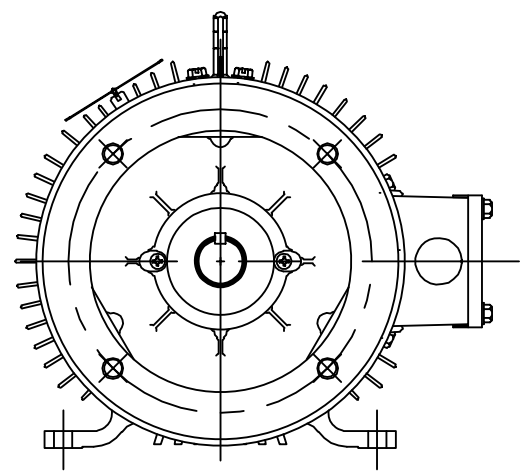
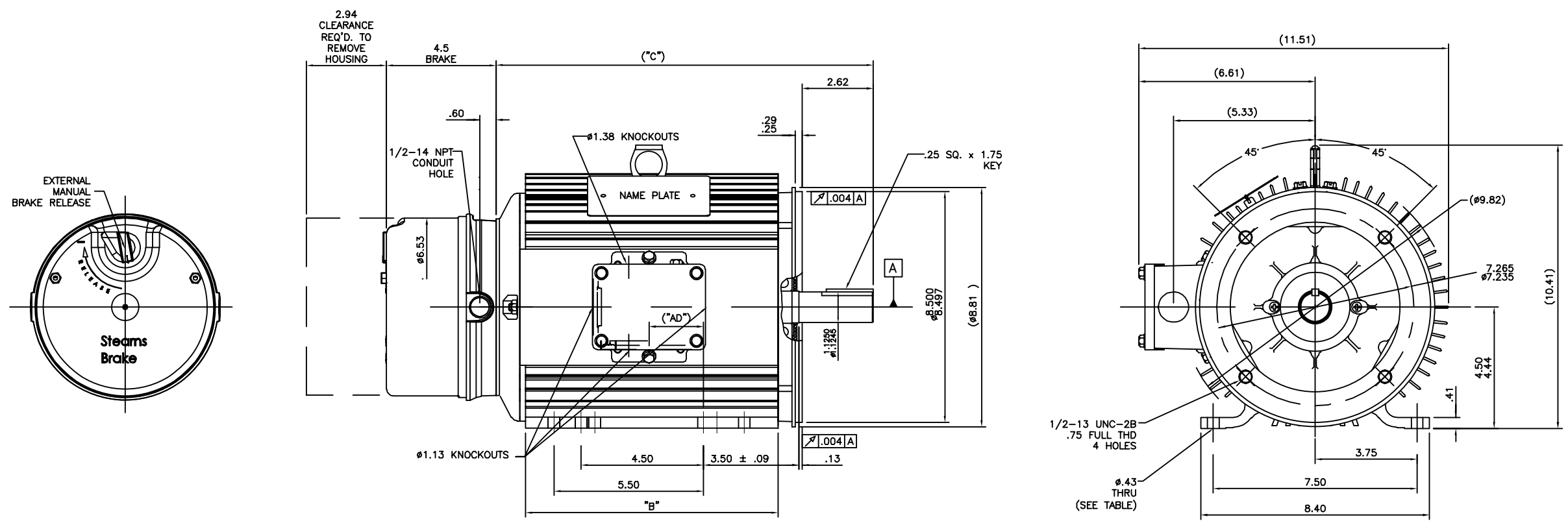
### Nameplate Specifications

Phase	<b>3</b>	Output HP	<b>1.50 &amp; 1 Hp</b>
Output KW	<b>1.1 &amp; 0.75 kW</b>	Voltage	<b>230/460 &amp; 190/380 V</b>
Speed	<b>1175 &amp; 985 rpm</b>	Service Factor	<b>1.15 &amp; 1.0</b>
Frame	<b>184TC</b>	Enclosure	<b>Totally Enclosed Non Ventilated</b>
Thermal Protection	<b>No Protection</b>	Efficiency	<b>87.5 &amp; 85.5 %</b>
Ambient Temperature	<b>40 °C</b>	Frequency	<b>60 &amp; 50 Hz</b>
Current	<b>5.2/2.6 &amp; 5.2/2.6 A</b>	Power Factor	<b>62</b>
Duty	<b>Continuous</b>	Insulation Class	<b>F</b>
Design Code	<b>B</b>	KVA Code	<b>K</b>
Drive End Bearing Size	<b>6206</b>	Opp Drive End Bearing Size	<b>6205</b>
UL	<b>Recognized</b>	CSA	<b>Y</b>
CE	<b>Y</b>	IP Code	<b>43</b>
Number of Speeds	<b>1</b>		

### Technical Specifications

Electrical Type	<b>Squirrel Cage Induction Run</b>	Starting Method	<b>Across The Line</b>
Poles	<b>6</b>	Rotation	<b>Reversible</b>
Resistance Main	<b>0 Ohms</b>	Mounting	<b>Rigid Base</b>
Motor Orientation	<b>Horizontal</b>	Drive End Bearing	<b>Ball</b>
Opp Drive End Bearing	<b>Ball</b>	Frame Material	<b>Aluminum</b>
Shaft Type	<b>T</b>	Overall Length	<b>13.89 in</b>
Frame Length	<b>9.50 in</b>	Shaft Diameter	<b>1.125 in</b>
Shaft Extension	<b>2.62 in</b>	Assembly/Box Mounting	<b>F1/F2 CAPABLE</b>
Outline Drawing	<b>036115ME-950</b>	Connection Drawing	<b>005010.01</b>

036115ME



DASH NO	"C"	"AD"	"B"	FOOT HOLES
950	13.89	2.00	9.3	12

TOLERANCES UNLESS SPECIFIED		MARATHON ELECTRIC		DRAWN PVR 02/05/15					
DEC.	INCHES			CHK	ST 02/05/15				
.X	±.1			APPD					
.XX	±.03	TITLE 182/184T-RIGID-TENV-C FACE		SCALE	3=8				
.XXX	±.005	OUTLINE		REF	035844ME				
.XXXX	±.0005	MAT'L. BRAKE		FMF					
NO.	REVISION	BY & DATE	CHK	ANG	±1/2'	FINISH	PREV		
			RFP			CAD FILE 036115ME	SIZE B	DRAWING NO. 036115ME	REV.
			DIST						

THIS DRAWING IN DESIGN AND DETAIL IS OUR PROPERTY AND MUST NOT BE USED EXCEPT IN CONNECTION WITH OUR WORK ALL RIGHTS OF DESIGN AND INVENTION ARE RESERVED THIS IS AN ELECTRONICALLY GENERATED DOCUMENT - DO NOT SCALE THIS PRINT

005010-01

VIEW FROM OUTSIDE OF MOTOR AT SWITCH END.



VOLTAGE	L1	L2	L3	JOIN & INSULATE
HIGH	T1	T2	T3	(T4,T7) (T5,T8) (T6,T9)
LOW	T1,T7	T2,T8	T3,T9	T4,T5,T6

				TOLERANCES UNLESS SPECIFIED		<b>Regal Beloit America, Inc.</b>		DRAWN RDW 04/12/02		
				DEC.	INCHES			CHK		
				.X	±.1			APPD		
				.XX	±.01			SCALE 1=1		
				.XXX	±.005	REF FIG.2-51				
A	UPDATED TO REGAL LOGO	SAJ 06/26/15	AJY	.XXXX	±.0005	TITLE EXTERNAL WIRING DIAGRAM 3 PHASE W/O PROTECTOR		FMF		
NO.	REVISION	BY & DATE	CHK	ANG	±1/2"	FINISH MAT'L. DECAL - 004014		PREV		
THIS DRAWING IN DESIGN AND DETAIL IS OUR PROPERTY AND MUST NOT BE USED EXCEPT IN CONNECTION WITH OUR WORK ALL RIGHTS OF DESIGN AND INVENTION ARE RESERVED THIS IS AN ELECTRONICALLY GENERATED DOCUMENT - DO NOT SCALE THIS PRINT				RFP	04/12/02	CAD FILE	00501001	SIZE	DRAWING NO.	REV.
				DIST	BRF-NLV			A	005010-01	A

**CERTIFICATION DATA SHEET**

**P.O. BOX 8003  
 WAUSAU, WI 54401-8003  
 PH. 715-675-3311**

**CONN. DIAGRAM:** 005010.01

**MODEL #:** 184TTTTY16076 AA

**OUTLINE:** 036115ME-950

**MOUNTING:** F1/F2 CAPABLE

**WINDING #:** T8636 R2 3

**TYPICAL MOTOR PERFORMANCE DATA**

HP	kW	SYNC. RPM	F.L. RPM	FRAME	ENCLOSURE	KVA CODE	DESIGN
1 1/2&1	1.12&0.75	1200	1175&985	184TC	TENV	K	B

PH	Hz	VOLTS	AMPS	START TYPE	DUTY	INSL	S.F.	AMB°C
3	60/50	230/460&190/380	5.2/2.6&5.2/2.6	ACROSS THE LINE	CONTINUOUS	F4	1.15/1.0	40

FULL LOAD EFF:	87.5&85.5	3/4 LOAD EFF:	86	1/2 LOAD EFF:	83	GTD. EFF	ELEC. TYPE
FULL LOAD PF:	62&87	3/4 LOAD PF:	55	1/2 LOAD PF:	43	85.5	SQ CAGE IND RUN

F.L. TORQUE	LOCKED ROTOR AMPS	L.R. TORQUE	B.D. TORQUE	F.L. RISE°C
6.705 LB-FT	30.4 / 15.2	10.97 LB-FT 163 %	22.5 LB-FT 335 %	80

SOUND PRESSURE @ 3 FT.	SOUND POWER	ROTOR WK^2	MAX. WK^2	SAFE STALL TIME	STARTS / HOUR	APPROX. MOTOR WGT
0 dBA	10 dBA	0.56 LB-FT^2	0 LB-FT^2	10 SEC.	0	0 LBS.

**\*\*\* SUPPLEMENTAL INFORMATION \*\*\***

DE BRACKET TYPE	ODE BRACKET TYPE	MOUNT TYPE	ORIENTATION	SEVERE DUTY	HAZARDOUS LOCATION	DRIP COVER	SCREENS	PAINT
C-FACE	BRAKE	RIGID	HORIZONTAL	FALSE	NONE	FALSE	NONE	GRAY (ENAMEL)

BEARINGS		GREASE	SHAFT TYPE	SPECIAL DE	SPECIAL ODE	SHAFT MATERIAL	FRAME MATERIAL
DE	ODE						
BALL	BALL	POLYREX EM	T	NONE	NONE	1144 STRESSPROOF (C-223)	ALUMINUM
6206	6205						

THERMO-PROTECTORS				THERMISTORS	CONTROL	SPACE HEATERS
THERMOSTATS	PROTECTORS	WDG RTDs	BRG RTDs			
NONE	NOT	NONE	NONE	NONE	FALSE	NONE VOLTS

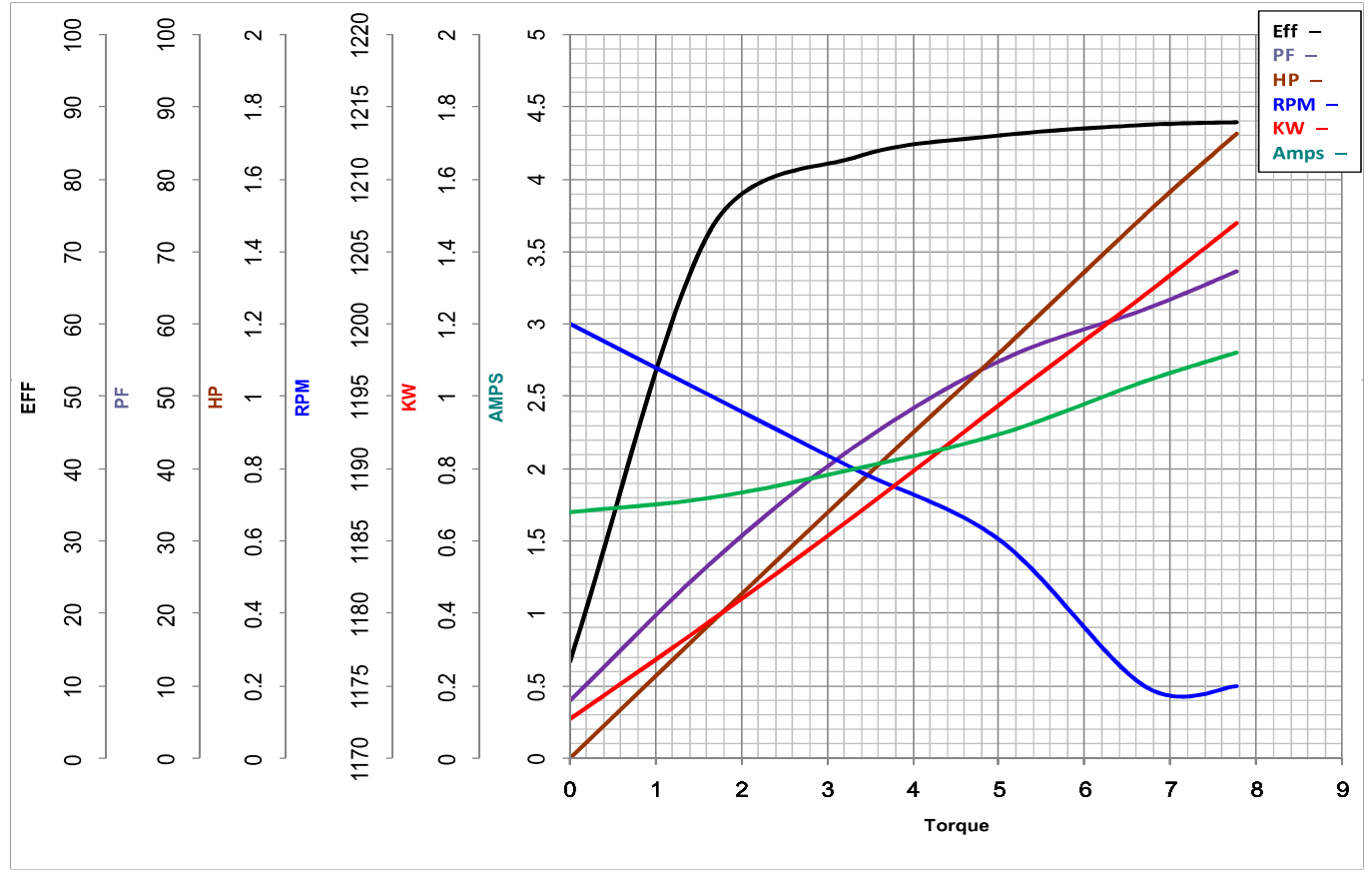
\*  
N  
O  
T  
E  
S

<b>INVERTER TORQUE:</b> NONE
<b>INV. HP SPEED RANGE:</b> NONE
<b>ENCODER:</b> NONE
NONE NONE
NONE NONE PPR
<b>BRAKE:</b> REGAL SUPPLIED AND MOUNT NONE
STEARNS P/N 004225.62
56,000 NEMA 2
15 FT-LB 208-230/460-190/380 V 60
Hz

**MARATHON ELECTRIC CORPORATION**

TYPICAL PERFORMANCE CURVE for AC MOTOR

Customer \_\_\_\_\_ Curve at 460 Volts HP 1.5&1 PHASE 3  
 Model No 184TTTTY16076 60 HZ  
1.5 HP VOLTS 230/460&190/380  
 Catalog No C402A HZ 60&50 RPM 1175&985



Torque in Lb.Ft				
FL TORQUE	<u>6.705</u>	Lb.Ft	FL AMPS	<u>5.2/2.6</u>
BD TORQUE	<u>22.5</u>	Lb.Ft	PU TORQUE	<u>10.8</u> Lb.Ft
LR TORQUE	<u>10.97</u>	Lb.Ft	LR AMPS	<u>15.2</u>
WINDING	T8636-3		Date	11/5/2018