

PRODUCT INFORMATION PACKET

Model No: 184TTTTY16033

Catalog No: C404A

Brake Motor, 2 & 1.5 HP, 3 Ph, 60 & 50 Hz, 230/460 & 190/380 V, 1200 & 1000 RPM, 184TC Frame, TENV



Regal and Marathon are trademarks of Regal Rexnord Corporation or one of its affiliated companies.

©2023 Regal Rexnord Corporation, All Rights Reserved. MC017097E



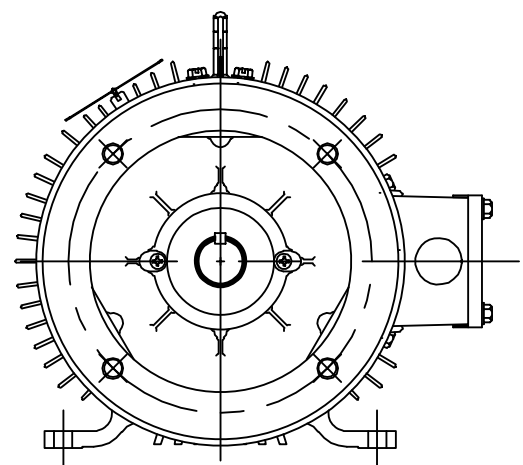
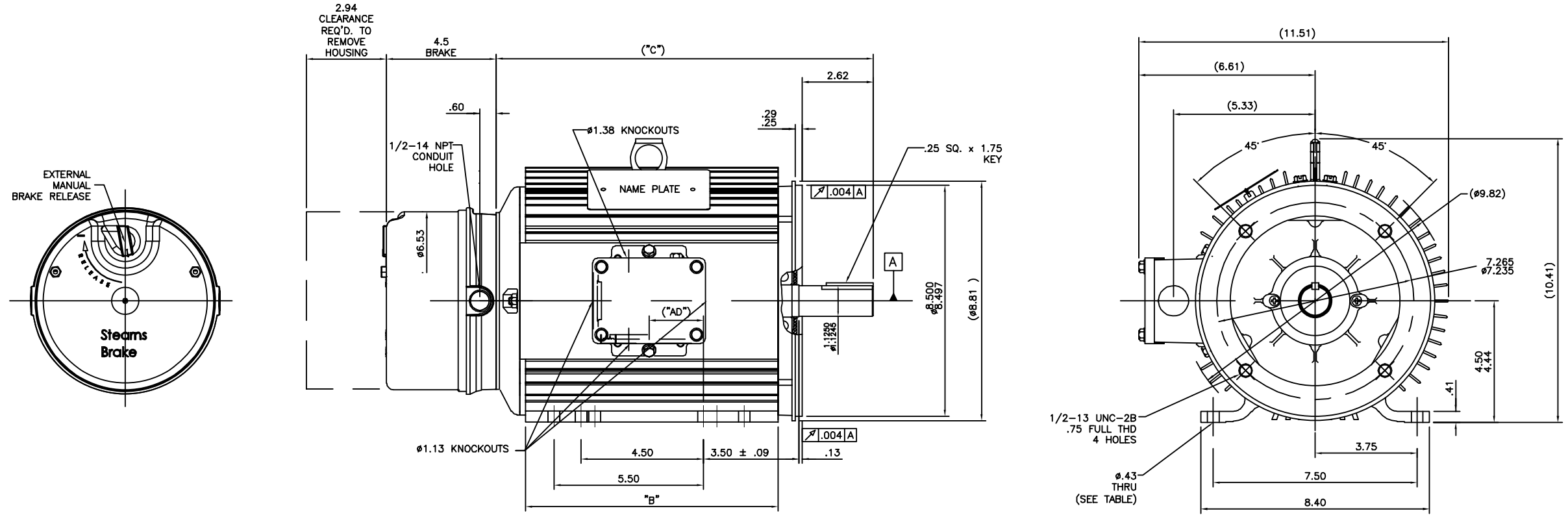
Nameplate Specifications

Phase	3	Output HP	2 & 1.50 Hp
Output KW	1.5 & 1.1 kW	Voltage	230/460 & 190/380 V
Speed	1175 & 1170 rpm	Service Factor	1.15 & 1.0
Frame	184TC	Enclosure	Totally Enclosed Non Ventilated
Thermal Protection	No Protection	Efficiency	88.5 & 87.5 %
Ambient Temperature	40 °C	Frequency	60 & 50 Hz
Current	6.4/3.2 & 6.2/3.1 A	Power Factor	66.5
Duty	Continuous	Insulation Class	F
Design Code	B	KVA Code	K
Drive End Bearing Size	6206	Opp Drive End Bearing Size	6205
UL	Recognized	CSA	Y
CE	Y	IP Code	43
Number of Speeds	1		

Technical Specifications

Electrical Type	Squirrel Cage Induction Run	Starting Method	Across The Line
Poles	6	Rotation	Reversible
Resistance Main	5.4 Ohms	Mounting	Rigid Base
Motor Orientation	Horizontal	Drive End Bearing	Ball
Opp Drive End Bearing	Ball	Frame Material	Aluminum
Shaft Type	T	Overall Length	13.89 in
Frame Length	9.50 in	Shaft Diameter	1.125 in
Shaft Extension	2.62 in	Assembly/Box Mounting	F1/F2 CAPABLE
Connection Drawing	A-EE7308	Outline Drawing	036115ME-950

036115ME



DASH NO	"C"	"AD"	"B"	FOOT HOLES
950	13.89	2.00	9.3	12

NO.		REVISION		BY & DATE		TOLERANCES UNLESS SPECIFIED		MARATHON ELECTRIC		DRAWN PVR 02/05/15	
						DEC.	INCHES			CHK ST 02/05/15	
						.X	±.1			APPD	
						.XX	±.03	TITLE		SCALE 3=8	
						.XXX	±.005	182/184T-RIGID-TENV-C FACE		REF 035844ME	
						.XXXX	±.0005	OUTLINE		FMF	
						ANG	±1/2°	MAT'L.		PREV	
						FINISH		BRAKE			
						RFP		CAD FILE		036115ME	
						DIST		SIZE		DRAWING NO.	
								B		036115ME	
										REV.	

THIS DRAWING IN DESIGN AND DETAIL IS OUR PROPERTY AND MUST NOT BE USED EXCEPT IN CONNECTION WITH OUR WORK ALL RIGHTS OF DESIGN AND INVENTION ARE RESERVED THIS IS AN ELECTRONICALLY GENERATED DOCUMENT - DO NOT SCALE THIS PRINT



NO.		REVISION		BY & DATE		CHK		ANG		FINISH		PREV	
5	CHG TO REGAL LOGO	SL	09/10/2015	AB									
4	REVISED IEC NOTATIONS	MSG	11/15/2011	CMN	.X	±.1							
3	ADDED IEC NOTATIONS... (U1), (V1) ETC. MU95194	MSG	5/10/2010	MJS	.XX	±.02							
2	ADDED THE OPTIONAL CORD CONNECTION MU46318	RDH	04/24/2003	DRS	.XXX	±.005							
1	REDRAWN	RM	11/20/1990		.XXXX	±.0005							
THIS DRAWING IN DESIGN AND DETAIL IS OUR PROPERTY AND MUST NOT BE USED EXCEPT IN CONNECTION WITH OUR WORK ALL RIGHTS OF DESIGN AND INVENTION ARE RESERVED THIS IS AN ELECTRONICALLY GENERATED DOCUMENT - DO NOT SCALE THIS PRINT		RFP		CAD FILE ee7308		SIZE A		DRAWING NO. EE7308		PAGE OF 5		REV. 5	

REGAL™ Regal Beloit America, Inc.

DRAWN RM 11/20/1990
 CHK ML 11/21/1990
 APPD SAS 04/24/2003
 SCALE 1=1
 REF
 FMF
 PREV

CERTIFICATION DATA SHEET

**P.O. BOX 8003
 WAUSAU, WI 54401-8003
 PH. 715-675-3311**

CUSTOMER:
ORDER #:
CONN. DIAGRAM: A-EE7308
OUTLINE: 036115ME-950
WINDING #: T8638 R3 3

CUSTOMER PO#:
MODEL #: 184TTTTY16033 AA
CUSTOMER PART #:
MOUNTING: F1/F2 CAPABLE

TYPICAL MOTOR PERFORMANCE DATA

HP	kW	SYNC. RPM	F.L. RPM	FRAME	ENCLOSURE	KVA CODE	DESIGN
2&1 1/2	1.49&1.12	1200	1175&1170	184TC	TENV	K	B

PH	Hz	VOLTS	AMPS	START TYPE	DUTY	INSL	S.F.	AMB°C
3	60/50	230/460&190/380	6.4/3.2&6.2/3.1	ACROSS THE LINE	CONTINUOUS	F4	1.15/1.0	40

FULL LOAD EFF:	88.5&87.5	3/4 LOAD EFF:	88	1/2 LOAD EFF:	87.1	GTD. EFF	ELEC. TYPE
FULL LOAD PF:	66.5&63	3/4 LOAD PF:	58.9	1/2 LOAD PF:	47.2	86.5	SQ CAGE IND RUN

F.L. TORQUE	LOCKED ROTOR AMPS	L.R. TORQUE	B.D. TORQUE	F.L. RISE°C
9 LB-FT	41 / 20.5	16.8 LB-FT 187 %	30.2 LB-FT 336 %	25

SOUND PRESSURE @ 3 FT.	SOUND POWER	ROTOR WK^2	MAX. WK^2	SAFE STALL TIME	STARTS / HOUR	APPROX. MOTOR WGT
55 dBA	65 dBA	0 LB-FT^2	0 LB-FT^2	15 SEC.	2	0 LBS.

***** SUPPLEMENTAL INFORMATION *****

DE BRACKET TYPE	ODE BRACKET TYPE	MOUNT TYPE	ORIENTATION	SEVERE DUTY	HAZARDOUS LOCATION	DRIP COVER	SCREENS	PAINT
C-FACE	BRAKE	RIGID	HORIZONTAL	FALSE	NONE	FALSE	NONE	GRAY (ENAMEL)

BEARINGS		GREASE	SHAFT TYPE	SPECIAL DE	SPECIAL ODE	SHAFT MATERIAL	FRAME MATERIAL
DE	ODE						
BALL	BALL	POLYREX EM	T	NONE	NONE	1144 STRESSPROOF (C-223)	ALUMINUM
6206	6205						

THERMO-PROTECTORS				THERMISTORS	CONTROL	SPACE HEATERS
THERMOSTATS	PROTECTORS	WDG RTDs	BRG RTDs			
NONE	NOT	NONE	NONE	NONE	FALSE	NONE VOLTS

*
N
O
T
E
S
*

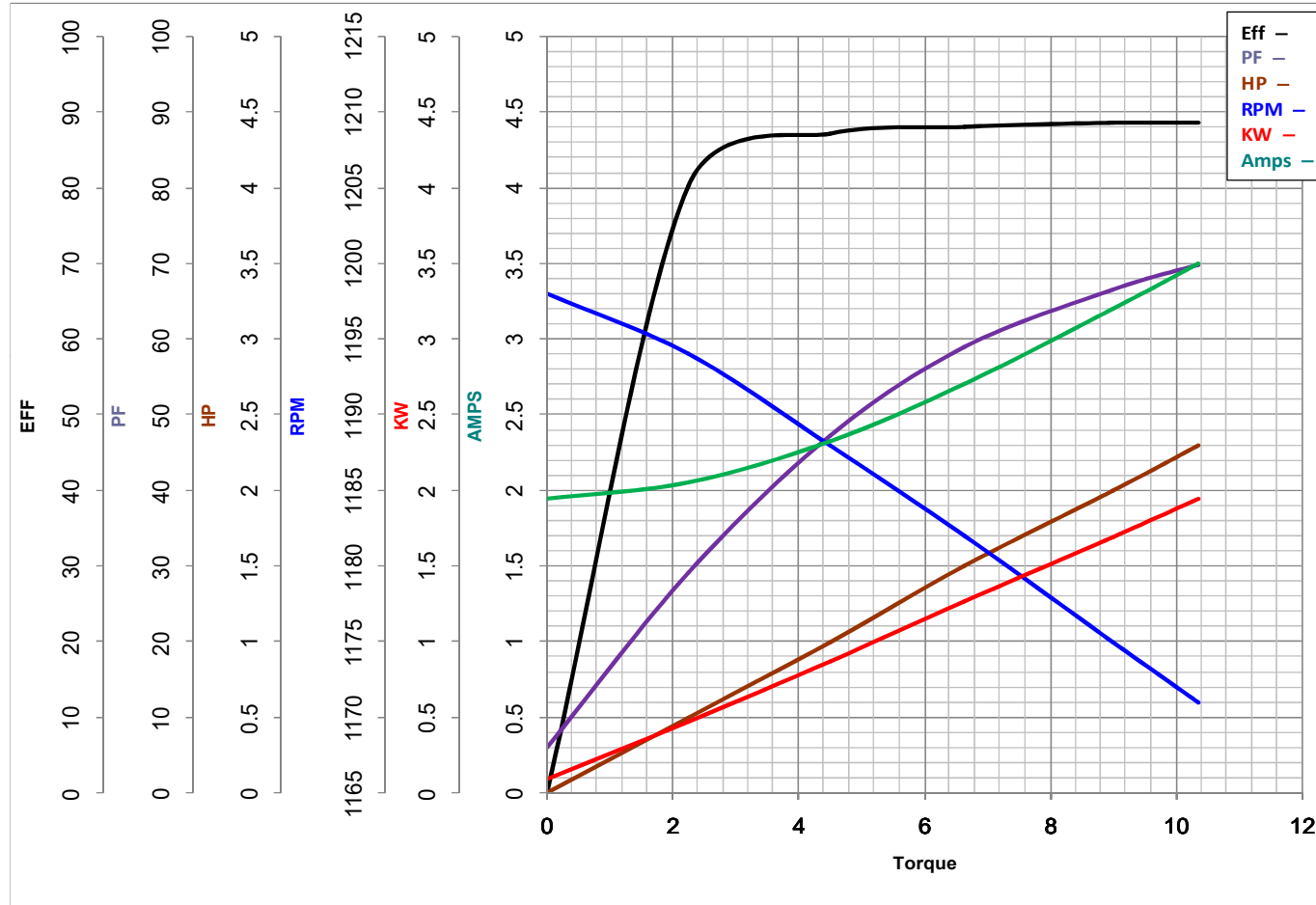
INVERTER TORQUE: NONE
INV. HP SPEED RANGE: NONE
ENCODER: NONE
NONE NONE
NONE NONE PPR
BRAKE: REGAL SUPPLIED AND MOUNT NONE
STEARNS P/N 35467-124
56,000 NEMA 2
15 FT-LB 208-230/460-190/380 V 60
Hz

PREPARED BY: Sumanth Raja Ghanta
DATE: 10/09/2018 03:14:03 AM
 FORM 3531 REV.3 02/07/99
 ** Subject to change without notice.



MARATHON ELECTRIC CORPORATION
TYPICAL PERFORMANCE CURVE for AC MOTOR

Customer _____ Curve at 460 Volts HP 2&1.5 PHASE 3
 Model No 184TTY16033 60 HZ 2 HP VOLTS 230/460&190/380
 Catalog No C404A HZ 60&50 RPM 1175&1170



FL TORQUE		<u>19</u>	Lb.Ft	FL AMPS		<u>6.4/3.2</u>	
BD TORQUE		<u>30.2</u>	Lb.Ft	PU TORQUE		<u>16.5</u>	Lb.Ft
LR TORQUE		<u>16.8</u>	Lb.Ft	LR AMPS		<u>20.5</u>	
WINDING		T8638-3		Date		11/1/2018	