

# PRODUCT INFORMATION PACKET

**marathon®**  
Motors

Model No: 184TTGS7313

Catalog No: C304

Other Purpose Motor, 5 & 3 HP, 3 Ph, 60 & 50 Hz, 230/460 & 190/380 V, 3600 & 3000 RPM, 184TC Frame,  
EPFC

Regal and Marathon are trademarks of Regal Rexnord Corporation or one of its affiliated companies.

©2023 Regal Rexnord Corporation, All Rights Reserved. MC017097E

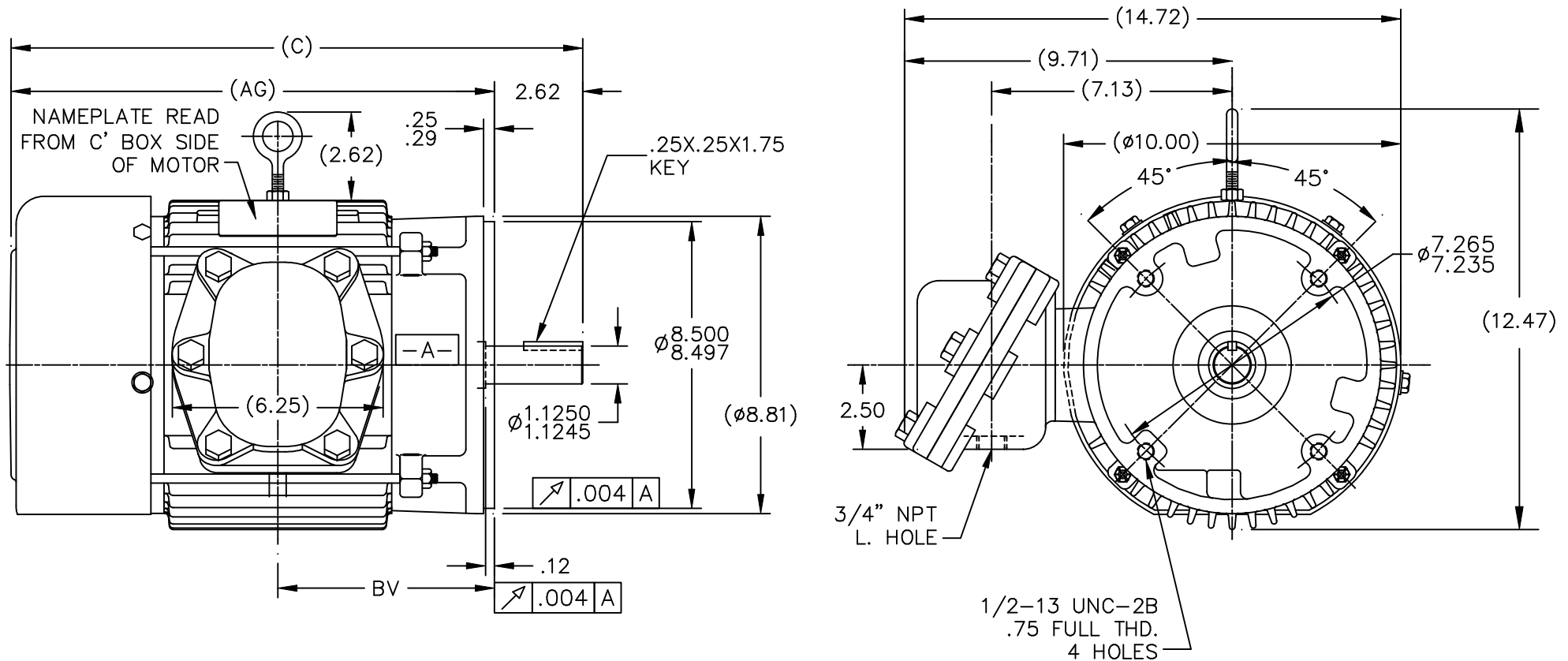
**RegalRexnord**

### Nameplate Specifications

Phase	3	Output HP	5 & 3 Hp
Output KW	3.7 & 2.2 kW	Voltage	230/460 & 190/380 V
Speed	3480 & 2925 rpm	Service Factor	1.0 & 1.0
Frame	184TC	Enclosure	Explosion Proof Fan cooled
Thermal Protection	No Protection	Efficiency	84 & 84 %
Ambient Temperature	40 °C	Frequency	60 & 50 Hz
Current	12/6 & 9.4/4.7 A	Power Factor	90.1
Duty	Continuous	Insulation Class	B
Design Code	B	KVA Code	J
Drive End Bearing Size	6207	Opp Drive End Bearing Size	6205
UL	Listed	CSA	Y
CE	N	IP Code	54
Number of Speeds	1		

### Technical Specifications


Electrical Type	Squirrel Cage Induction Run	Starting Method	Across The Line
Poles	2	Rotation	Reversible
Resistance Main	2.78 Ohms	Mounting	Round
Motor Orientation	Horizontal	Drive End Bearing	Ball
Opp Drive End Bearing	Ball	Frame Material	Cast Iron
Shaft Type	T	Overall Length	16.62 in
Frame Length	6.75 in	Shaft Diameter	1.125 in
Shaft Extension	2.75 in	Assembly/Box Mounting	F1 ONLY
Connection Drawing	A-EE7308T	Outline Drawing	A-SS63882-675



## NOTES:

1. CONDUIT BOX CAN BE ROTATED IN 90° STEPS.
2. BOX CAN BE MOUNTED ON OPPOSITE SIDE BY REMOVING BRACKETS AND TURNING FRAME 180° THIS MODIFICATION CAN BE PERFORMED ONLY BY MARATHON ELECTRIC OR BY A FACILITY THAT IS COVERED UNDER UNDERWRITERS LABORATORIES INC. PTKQ, TITLED "MOTOR AND GENERATORS, REBUILT FOR USE IN HAZARDOUS LOCATIONS".

DASH	FRAME	C	AG	BV		
575	182/4TC	15.62	13.00	5.88		
675	182/4TC	16.62	14.00	6.38		
800	182/4TC	17.87	15.25	7.00	12-09-1999	

				TOLERANCES UNLESS SPECIFIED		 <b>MARATHON ELECTRIC</b>	DRAWN PGK 12-27-1996					
				DEC.	INCHES		CHK	ML	01-09-1997			
9	UPDATED THE NOTE	ST 5/7/2007	AT	.X	±.1	TITLE OUTLINE 180TC FR. – BB – EPFC – C'FACE			APPD	GK	01-09-1997	
8	DASH 575 & 675 FRAME WERE 182TC ONLY CN 37332	HLB 09-22-2003	HLB	.XX	±.03				SCALE	2=9		
7	UPDATED TITLE BLOCK	DAH 01-08-2001		.XXX	±.005				REF			
6	REDRAWN ON CAD	PGK 01-09-1997		.XXXX	±.0005	MAT'L.			FMF			
NO.	REVISION	BY & DATE	CHK	ANG	±7'30"	FINISH			PREV			
THIS DRAWING IN DESIGN AND DETAIL IS OUR PROPERTY AND MUST NOT BE USED EXCEPT IN CONNECTION WITH OUR WORK ALL RIGHTS OF DESIGN AND INVENTION ARE RESERVED THIS IS AN ELECTRONICALLY GENERATED DOCUMENT – DO NOT SCALE THIS PRINT			RFP		CAD FILE ss63882			SIZE	DRAWING NO.	PAGE	OF	REV.
			DIST LB					A	SS63882			

## HIGH VOLTAGE

THREE PHASE  
DUAL VOLTAGE MOTOR

NOTE FOR FACTORY USE ONLY:  
TO SURGE TEST FOR COMMON CONNECT:  
HIGH VOLT: CONNECT P1 TO T1  
THEN P2 TO L1  
LOW VOLT: CONNECT P1 TO T1 & T7,  
THEN P2 TO L1

## LOW VOLTAGE



## VIEW OF TERMINAL END

NOTE: LEAD'S COLOR CAN BE YELLOW OR WHITE FOR MT2 PLANT

DRAWING REVISION T	REVISION BY ZR	DATE 01-14-2019
ECO ECO-0159915	APPROVED BY DR	DATE 01-15-2019

ECO DESCRIPTION  
ADDED TERMINAL CONNECTION DIAGRAM

COPYRIGHT REGAL BELOIT AMERICA, INC. ALL RIGHTS RESERVED.  
PROPRIETARY AND CONFIDENTIAL INFORMATION - THIS DOCUMENT IS THE PROPERTY OF  
REGAL BELOIT AMERICA, INC. ("OWNER") AND CONTAINS OWNER'S PROPRIETARY  
INFORMATION. ANY PERSON, CORPORATION OR OTHER FIRM RECEIVING IT IS DEEMED,  
BY RECEIVING IT, TO AGREE THAT IT, AND/OR ANY PART OF IT, SHALL NOT BE DISCLOSED  
TO ANY PERSON, CORPORATION OR OTHER ENTITY, DUPLICATED, AND/OR USED, EXCEPT  
AS EXPRESSLY APPROVED IN WRITING IN ADVANCE BY OWNER. THIS DOCUMENT SHALL  
BE RETURNED TO OWNER UPON REQUEST. IT MAY BE SUBJECT TO CERTAIN  
RESTRICTIONS UNDER APPLICABLE EXPORT CONTROL LAWS AND REGULATIONS.

DRAWN BY SMC	DATE 05-13-1992
APPROVED BY TB	DATE 05-13-1992
REFERENCE EE7308/EE7300	THIRD ANGLE PROJECTION

**REGAL**™ Regal Beloit America, Inc.

DESCRIPTION  
CONN DIAGRAM-INTERNAL  
3 PHASE - DUAL VOLTAGE MOTOR

MATERIAL	PROCESS/FINISH
SIZE A	DRAWING NUMBER EE7308T
	SHEET 1 OF 1