

PRODUCT INFORMATION PACKET



Model No: 184TTGS11104
Catalog No: 184TTGS11104
1.5,900,EPFC,184T,3/60/460

Regal and Marathon are trademarks of Regal Rexnord Corporation or one of its affiliated companies.
©2024 Regal Rexnord Corporation, All Rights Reserved. MC017097E



Nameplate Specifications

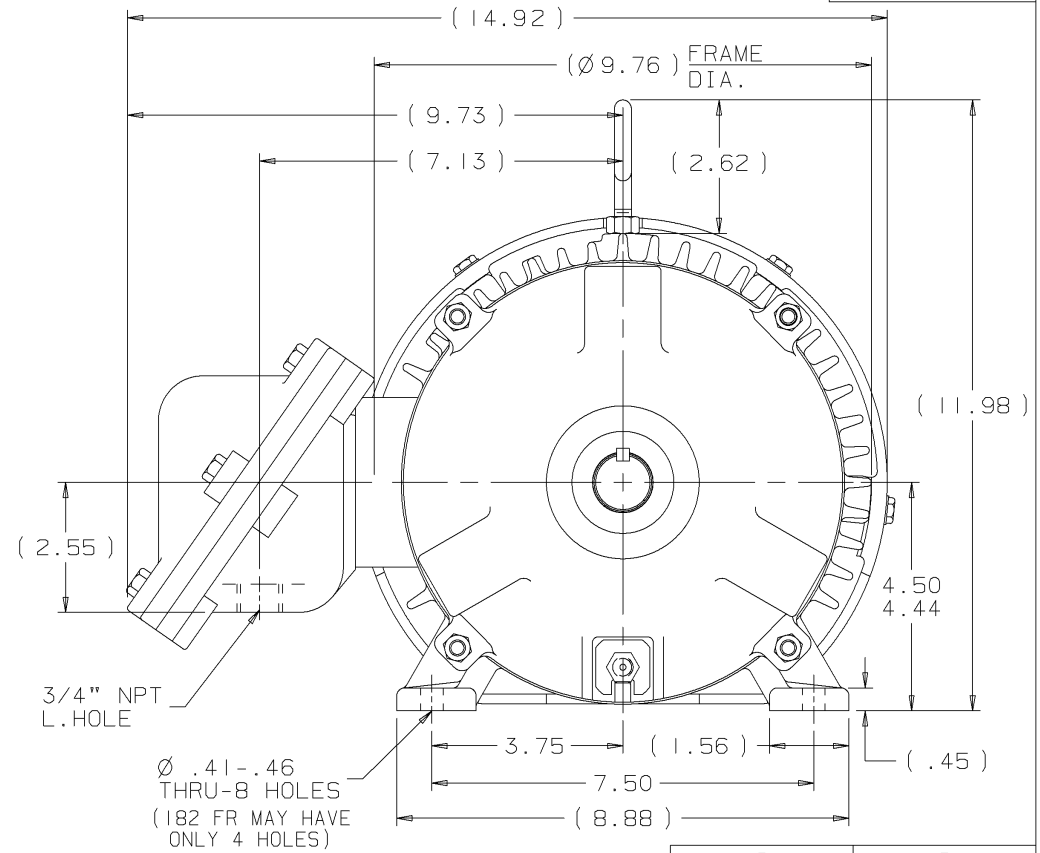
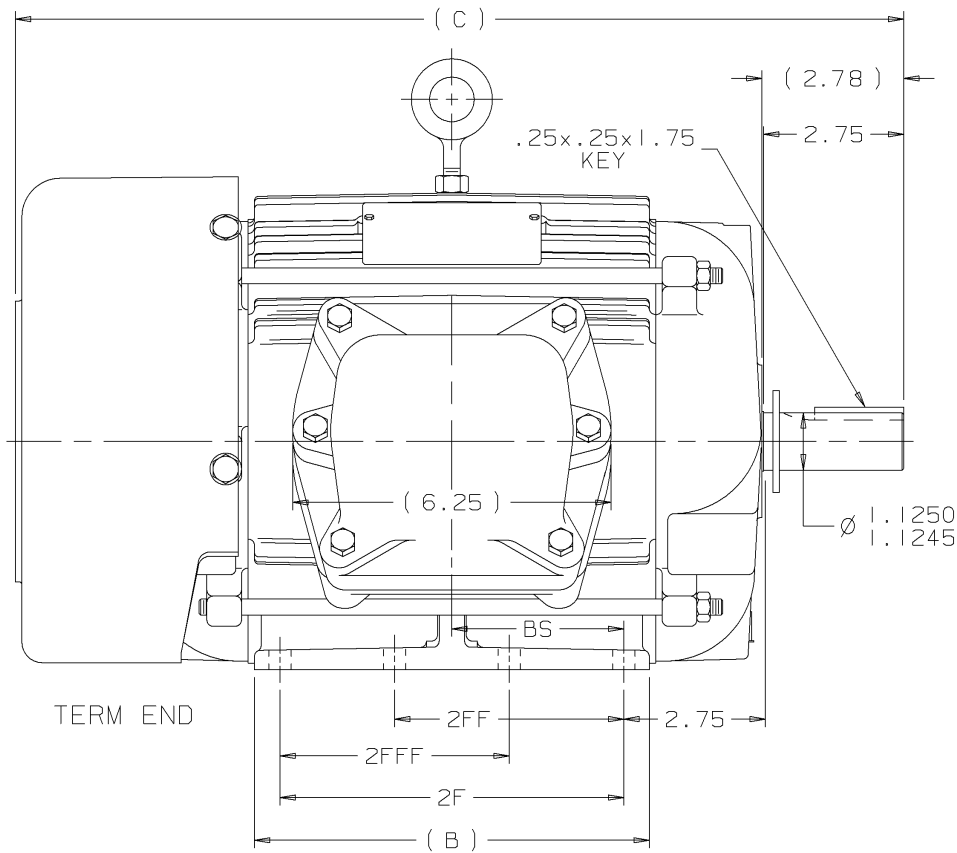
Phase	3	Output HP	1.50 Hp
Output KW	1.1 kW	Voltage	460 V
Speed	865 rpm	Service Factor	1
Frame	184T	Enclosure	Explosion Proof Fan cooled
Thermal Protection	No Protection	Efficiency	78.2 %
Ambient Temperature	60 °C	Frequency	60 Hz
Current	3.1 A	Power Factor	59
Duty	Continuous	Insulation Class	F
Design Code	B	KVA Code	J
Drive End Bearing Size	206	Opp Drive End Bearing Size	205
UL	No	CSA	N
CE	N	IP Code	54
Number of Speeds	1	Hazardous Location	EXP PROOF CL I GR C&D T2A

Technical Specifications

Electrical Type	Squirrel Cage Induction Run	Starting Method	Across The Line
Poles	8	Rotation	Reversible
Resistance Main	10.45 Ohms	Mounting	Rigid Base
Motor Orientation	Horizontal	Drive End Bearing	Ball
Opp Drive End Bearing	Ball	Frame Material	Cast Iron
Shaft Type	T	Assembly/Box Mounting	F2/F1 CAPABLE
Outline Drawing	B-SS68728-800	Connection Drawing	A-EE7300

This is an uncontrolled document once printed or downloaded and is subject to change without notice. Date Created:10/01/2024

B-SS68728



NOTES:

1. CONDUIT BOX CAN BE ROTATED IN 90° STEPS.
2. CONDUIT BOX CAN BE MOUNTED ON OPPOSITE SIDE BY REMOVING BRACKETS AND TURNING FRAME 180°.
3. NAMEPLATE TO BE READ FROM CONDUIT BOX SIDE OF MOTOR

DASH	FRAME	B	2F	2FF	2FFF	BS	C CAST FAN GUARD	C STEEL FAN GUARD
575	182T	5.50	4.50	-	-	2.25	15.19	14.87
675	182T	6.50	5.50	-	-	2.75	16.19	15.87
675	182/4T	6.50	5.50	4.50	4.50	2.75	16.19	15.87
800	182T	7.75	6.75	4.50	4.50	3.37	17.44	17.12
800	184T	7.75	6.75	5.50	5.50	3.37	17.44	17.12

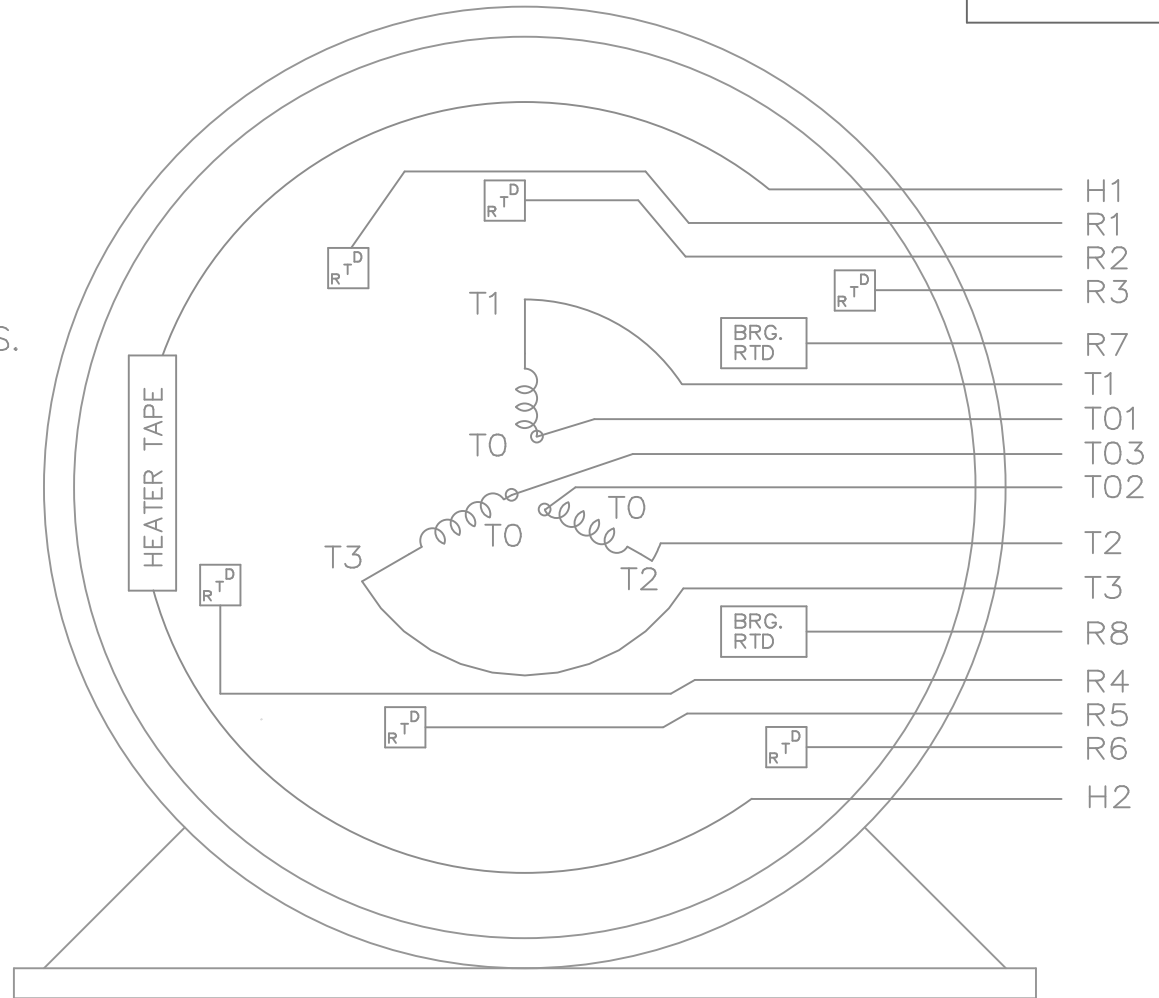
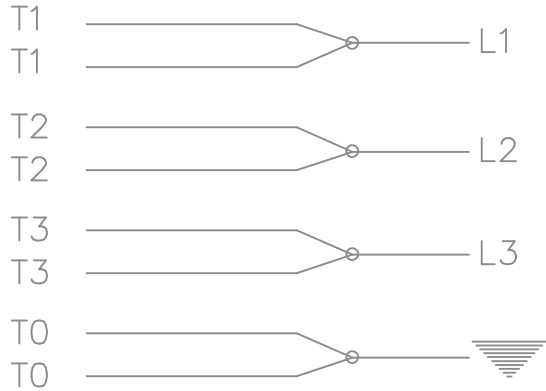
				✓ MAX. SURFACE ROUGHNESS UNLESS NOTED OTHERWISE		UNLESS OTHERWISE SPECIFIED DIMENSIONS ARE IN INCHES TOL. ON XX±.03 XXX±.005 XXXX±.0005 ANGLES± 7'30"	
				MATL SPEC		DRAWN BY DRS 08-14-2001	
				FINISH		CHKD BY ML 08-24-2001	
				PART NAME OUTLINE		APPD BY GK 08-24-2001	
08-24-2001		NEW DRAWING		DRS		B-SS68728	
REV	DATE	CHANGE		NAME		DRWG NO	
				180-184T FR. - BB - TS - EPFC		B-SS68728	
		L SHOP BOOK		PURCHASED		DISTRIBUTION - WA - LB - WP - LM - BR	
						CADD FILE NO. SS68728P2	

THREE PHASE – SINGLE VOLTAGE
MOTOR OR INDUCTION GENERATOR
WITH 6 STATOR RTD'S MARKED R1
THRU R6, 2 BRG. RTD'S MARKED
R7 AND R8, AND 2 HEATER LEADS
MARKED H1 AND H2


NOTE:
WHEN MORE THAN ONE HEATER IS USED
HEATERS MUST BE CONNECTED IN SERIES.

TO REVERSE ROTATION:
INTERCHANGE ANY TWO LINE
LEAD CONNECTIONS

IF MOTOR HAS MULTIPLE
T'S PER LEAD CONNECT
TOGETHER LIKE T'S



VIEW OF TERMINAL END

				TOLERANCES UNLESS SPECIFIED			DRAWN KL 10-09-2001					
				DEC.	INCHES		CHK DJK 10-09-2001					
				.X	±.1		APPD EAB 10-09-2001					
				.XX	±.02		SCALE 1=1					
				.XXX	±.005		REF					
2	REDRAWN IN AUTOCAD	TAT 08-02-2004	ML	.XXX	±.005	TITLE CONNECTION DIAGRAM – EXTERNAL						
1	NEW DRAWING	MU38688	KL 10-09-2001		.XXXX	±.0005	MAT'L.				FMF	
NO.	REVISION		BY & DATE	CHK	ANG	±7'30"	FINISH				PREV	
THIS DRAWING IN DESIGN AND DETAIL IS OUR PROPERTY AND MUST NOT BE USED EXCEPT IN CONNECTION WITH OUR WORK ALL RIGHTS OF DESIGN AND INVENTION ARE RESERVED THIS IS AN ELECTRONICALLY GENERATED DOCUMENT – DO NOT SCALE THIS PRINT				RFP		CAD FILE ee7300hu			SIZE	DRAWING NO.	PAGE OF	REV.
				DIST					A	EE7300HU		2

