

PRODUCT INFORMATION PACKET

marathon®
Motors

Model No: 184TTGN6576

Catalog No: U041A

Hazardous Duty® Explosion Proof Motor, 2 & 1.50 HP, 3 Ph, 60 & 50 Hz, 230/460 & 190/380 V,
1200 & 1000 RPM, 184T Frame, EPFC



Regal and Marathon are trademarks of Regal Rexnord Corporation or one of its affiliated companies.

©2023 Regal Rexnord Corporation, All Rights Reserved. MC017097E

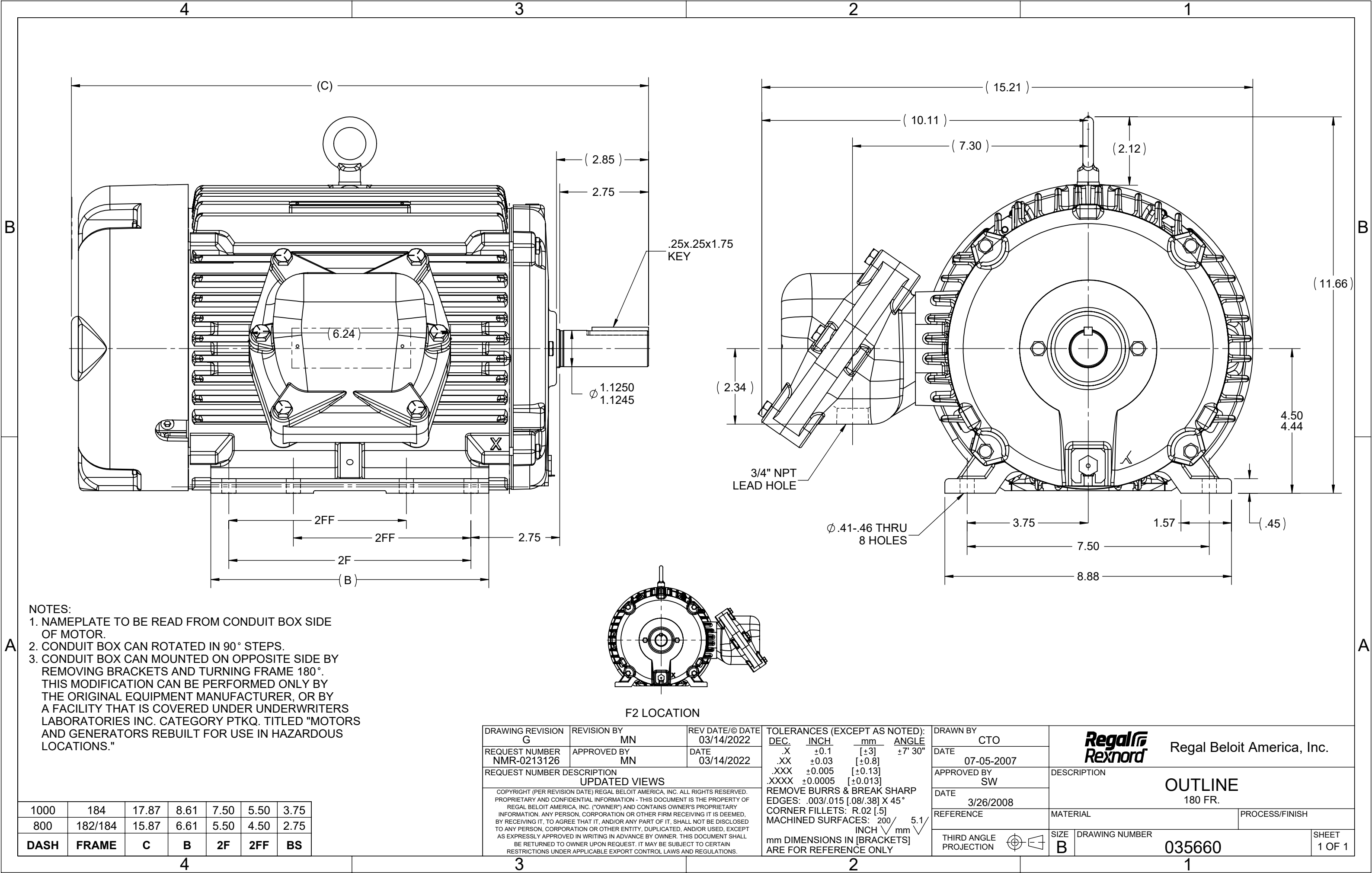
RegalRexnord

Nameplate Specifications

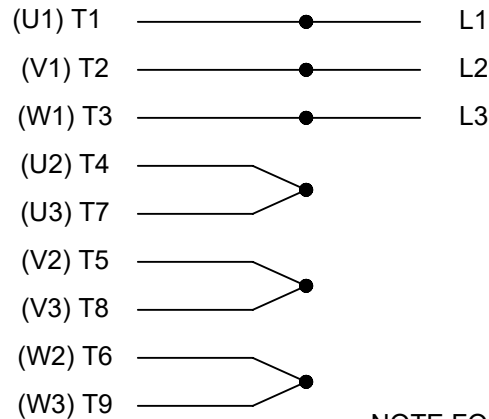
Phase	3	Output HP	2 & 1.50 Hp
Output KW	1.5 & 1.1 kW	Voltage	230/460 & 190/380 V
Speed	1175 & 975 rpm	Service Factor	1.15 & 1.15
Frame	184T	Enclosure	Explosion Proof Fan cooled
Thermal Protection	Thermostat	Efficiency	88.5 & 87.5 %
Ambient Temperature	40 °C	Frequency	60 & 50 Hz
Current	6/3 & 5.6/2.8 A	Power Factor	70
Duty	Continuous	Insulation Class	F
Design Code	B	KVA Code	K
Drive End Bearing Size	6206	Opp Drive End Bearing Size	6206
UL	UL Listed; also, UL Certified for Canada	CSA	N
CE	N	IP Code	54
Number of Speeds	1	Hazardous Location	DIV 1 EXP PROOF CL I GR CD CL II GR FG T3B

Technical Specifications

Electrical Type	Squirrel Cage Inverter Rated	Starting Method	Line Or Inverter
Poles	6	Rotation	Reversible
Resistance Main	5.65 Ohms	Mounting	Rigid Base
Motor Orientation	Horizontal	Drive End Bearing	Ball
Opp Drive End Bearing	Ball	Frame Material	Cast Iron
Shaft Type	T	Overall Length	17.87 in
Frame Length	10.00 in	Shaft Diameter	1.125 in
Shaft Extension	2.85 in	Assembly/Box Mounting	F1 ONLY
Inverter Load	CONSTANT 10:1		
Connection Drawing	A-EE7308T	Outline Drawing	035660-1000

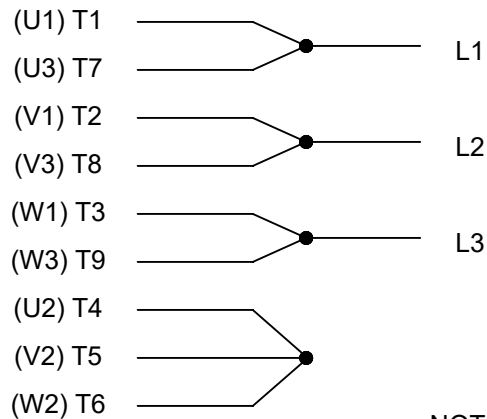


HIGH VOLTAGE

THREE PHASE
DUAL VOLTAGE MOTOR

NOTE FOR FACTORY USE ONLY:
TO SURGE TEST FOR COMMON CONNECT:
HIGH VOLT: CONNECT P1 TO T1
THEN P2 TO L1
LOW VOLT: CONNECT P1 TO T1 & T7,
THEN P2 TO L1

LOW VOLTAGE



VIEW OF TERMINAL END

NOTE: LEAD'S COLOR CAN BE YELLOW OR WHITE FOR MT2 PLANT

DRAWING REVISION T	REVISION BY ZR	DATE 01-14-2019
ECO ECO-0159915	APPROVED BY DR	DATE 01-15-2019

ECO DESCRIPTION
ADDED TERMINAL CONNECTION DIAGRAM

COPYRIGHT REGAL BELOIT AMERICA, INC. ALL RIGHTS RESERVED.
PROPRIETARY AND CONFIDENTIAL INFORMATION - THIS DOCUMENT IS THE PROPERTY OF
REGAL BELOIT AMERICA, INC. ("OWNER") AND CONTAINS OWNER'S PROPRIETARY
INFORMATION. ANY PERSON, CORPORATION OR OTHER FIRM RECEIVING IT IS DEEMED,
BY RECEIVING IT, TO AGREE THAT IT, AND/OR ANY PART OF IT, SHALL NOT BE DISCLOSED
TO ANY PERSON, CORPORATION OR OTHER ENTITY, DUPLICATED, AND/OR USED, EXCEPT
AS EXPRESSLY APPROVED IN WRITING IN ADVANCE BY OWNER. THIS DOCUMENT SHALL
BE RETURNED TO OWNER UPON REQUEST. IT MAY BE SUBJECT TO CERTAIN
RESTRICTIONS UNDER APPLICABLE EXPORT CONTROL LAWS AND REGULATIONS.

DRAWN BY
SMC

DATE
05-13-1992

APPROVED BY
TB

DATE
05-13-1992

REFERENCE
EE7308/EE7300

THIRD ANGLE
PROJECTION



Regal Beloit America, Inc.

DESCRIPTION

CONN DIAGRAM-INTERNAL
3 PHASE - DUAL VOLTAGE MOTOR

MATERIAL

PROCESS/FINISH

SIZE
A

DRAWING NUMBER

EE7308T

SHEET
1 OF 1

CERTIFICATION DATA SHEET

Model#: 184TTGN6576 AA
 CONN. DIAGRAM: A-EE7308T
 OUTLINE: 035660-1000

WINDING#: K184659 R5 1
 ASSEMBLY: F1 ONLY

TYPICAL MOTOR PERFORMANCE DATA

HP	KW	SYNC. RPM	F.L. RPM	FRAME	ENCLOSURE	KVA CODE	DESIGN
2&1 1/2	1.49&1.12	1200	1175&975	184T	EPFC	K	B

PH	Hz	VOLTS	FL AMPS	START TYPE	DUTY	INSL	S.F	AMB°C	ELEVATION
3	60/50	230/460#190/ 380	6/3&5.6/2.8	LINE OR INVERTER	CONTINUOU S	F3	1.15/1.15	40	3300

FULL LOAD EFF: 88.5&87.5	3/4 LOAD EFF: 88.5	1/2 LOAD EFF: 86.5	GTD. EFF	ELEC. TYPE	NO LOAD AMPS
FULL LOAD PF: 70&68.5	3/4 LOAD PF: 62	1/2 LOAD PF: 49	87.5	SQ CAGE INV RATED	3.8 / 1.9

F.L. TORQUE	LOCKED ROTOR AMPS	L.R. TORQUE	B.D. TORQUE	F.L. RISE°C
9 LB-FT	44 / 22	17.5 LB-FT 194	32 LB-FT 356	30

SOUND PRESSURE @ 3 FT.	SOUND POWER	ROTOR WK^2	MAX. WK^2	SAFE STALL TIME	STARTS /HOUR	APPROX. MOTOR WGT
55 dBA	65 dBA	0.46 LB-FT^2	40 LB-FT^2	25 SEC.	2	130 LBS.

*** SUPPLEMENTAL INFORMATION ***

DE BRACKET TYPE	ODE BRACKET TYPE	MOUNT TYPE	ORIENTATION	SEVERE DUTY	HAZARDOUS LOCATION	DRIP COVER	SCREENS	PAINT
STANDARD	STANDARD	RIGID	HORIZONTAL	TRUE	EXP PROOF CL I GR C&D CL II GR F&G T3B	FALSE	NONE	BLUE (EPOXY)

BEARINGS		GREASE	SHAFT TYPE	SPECIAL DE	SPECIAL ODE	SHAFT MATERIAL	FRAME MATERIAL
DE	OPE						
BALL	BALL	POLYREX EM	T	NONE	NONE	1144 STRESSPROOF (C-223)	CAST IRON
6206	6206						

THERMO-PROTECTORS				THERMISTORS	CONTROL	SPACE /n HEATERS
THERMOSTATS	PROTECTORS	WDG RTDs	BRG RTDs			
TSTATS (N/C)	NOT	NONE	NONE	NONE	FALSE	NONE VOLTS

If Inverter equals NONE, contact factory for further information

*
N
O
T
E
S
*

INVERTER TORQUE: CONSTANT 10:1 INV. HP SPEED RANGE: NONE
ENCODER: NONE NONE NONE NONE NONE PPR
BRAKE: NONE NONE NONE P/N NONE NONE NONE NONE FT-LB NONE V NONE Hz

DATE: 06/28/2017 07:38:24 AM
 FORM 3531 REV.3 02/07/99

** Subject to change without notice.

Data Sheet

Date: 6/29/2017

Customer: _____

Attention: _____

Submitted by: FAREEDA DUDEKULA



184TTGN6576

Submittal

Data @ 460 V

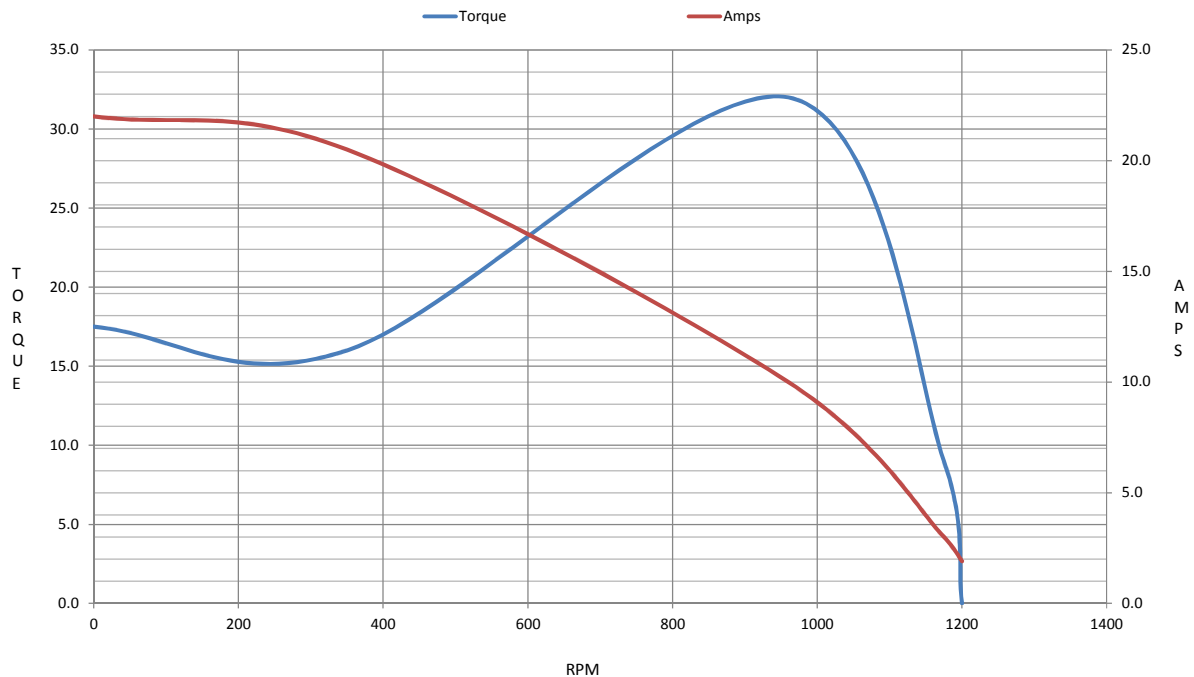
Motor Load Data

Load	0%	25%	50%	75%	100%	115%	125%	LR	
Current (Amps)	1.90	2.00	2.20	2.60	3.0	3.2	3.6	22.0	
Torque (ft-lb)	0.00	2.20	4.5	6.7	9.0	10.4	11.2	17.5	
RPM	1200	1192	1185	1180	1175	1,170	1168	0	
Efficiency (%)		80.0	86.5	88.5	88.5	88.5	87.5		
P.F. (%)	5.5	30.0	49.0	62.0	70.0	74.0	75.0	42.0	

Motor Speed Data

	LR	Pull-Up	BD	Rated	Idle																																					
Speed (RPM)	0	350	960	1175	1200																																					
Current (Amps)	22.0	20.5	10.0	3.0	1.90																																					
Torque (ft-lb)	17.5	16.0	32.0	9.0	0.00																																					
<div><div>Efficiency (%)</div><div>P.F. (%)</div><div>Current (Amps)</div></div> <table><caption>Graph Data Points (Estimated)</caption><thead><tr><th>Load (%)</th><th>Efficiency (%)</th><th>P.F. (%)</th><th>Current (Amps)</th></tr></thead><tbody><tr><td>20</td><td>80</td><td>30</td><td>2.0</td></tr><tr><td>40</td><td>84</td><td>45</td><td>2.2</td></tr><tr><td>60</td><td>87</td><td>58</td><td>2.5</td></tr><tr><td>80</td><td>88</td><td>68</td><td>2.8</td></tr><tr><td>100</td><td>88</td><td>72</td><td>3.2</td></tr><tr><td>120</td><td>87</td><td>74</td><td>3.4</td></tr><tr><td>125</td><td>87</td><td>75</td><td>3.5</td></tr></tbody></table>						Load (%)	Efficiency (%)	P.F. (%)	Current (Amps)	20	80	30	2.0	40	84	45	2.2	60	87	58	2.5	80	88	68	2.8	100	88	72	3.2	120	87	74	3.4	125	87	75	3.5	Information Block				
						Load (%)	Efficiency (%)	P.F. (%)	Current (Amps)																																	
						20	80	30	2.0																																	
						40	84	45	2.2																																	
						60	87	58	2.5																																	
						80	88	68	2.8																																	
						100	88	72	3.2																																	
						120	87	74	3.4																																	
						125	87	75	3.5																																	
						HP			2.0																																	
						Sync. RPM			1200																																	
						Frame			184																																	
						Enclosure			TEFC																																	
						Construction			TFS																																	
						Voltage			30/460#190/381 V																																	
						Frequency			60 Hz																																	
						Design			B																																	
LR Code letter			K																																							
Service Factor			1.15																																							
Temp Rise @ FL			30 ° C																																							
Duty			CONT																																							
Ambient			40 ° C																																							
Elevation			1,000 feet																																							
Rotor/Shaft wk²			0.46 Lb-Ft²																																							
Ref Wdg			K184659 R5																																							
Sound Pressure @ 1M			55 dBA																																							
VFD Rating			CONSTANT 10:1																																							
Outline Dwg			035660-1000																																							
Conn. Diag			A-EE7308T																																							
Additional Specifications:																																										
0																																										
0																																										
EQUIV CKT (OHMS / PHASE)																																										
R1		R2		X1		X2		Xm																																		
3.4220		2.4420		8.9890		10.1100		133.9060																																		

Speed -Torque Curve



CERTIFICATE OF COMPLIANCE

Certificate Number 20220221- E12044
Report Reference E12044-20090313
Issue Date 2022-FEBRUARY-21

Issued to: REGAL BELOIT AMERICA INC
1946 W COOK RD
FORT WAYNE IN 46818

Tradename: Marathon

**This certificate confirms that
representative samples of**

MOTORS FOR USE IN HAZARDOUS LOCATIONS

Electric motors for use in hazardous locations; Class I, Groups C and D; Class II, Groups F and G; Inclusive of Model Number 184TTGN6576 (may have prefix and/or suffix characters).

Have been investigated by UL in accordance with the Standard(s) indicated on this Certificate.

Standard(s) for Safety: UL 674 - Electric Motors and Generators for Use in Division 1 Hazardous (Classified) Locations,
CSA C22.2 No. 145, Electric Motors and Generators for Use in Hazardous (Classified) Locations

Additional Information: See the UL Online Certifications Directory at <https://iq.ulprospector.com> for additional information.

This *Certificate of Compliance* does not provide authorization to apply the UL Mark. Only the UL Follow-Up Services Procedure provides authorization to apply the UL Mark.

Only those products bearing the UL Mark should be considered as being UL Certified and covered under UL's Follow-Up Services.

Look for the UL Certification Mark on the product.

This is to certify that representative samples of the product as specified on this certificate were tested according to the current UL requirements.



Bruce Mahrenholz, Director North American Certification Program
UL LLC

Any information and documentation involving UL Mark services are provided on behalf of UL LLC (UL) or any authorized licensee of UL. For questions, please contact a local UL Customer Service Representative at <http://ul.com/aboutul/locations/>

