

PRODUCT INFORMATION PACKET

Model No: 184TTGCD6501

Catalog No: U061B

Hazardous Duty® Explosion Proof Motor, 5 & 3 HP, 3 Ph, 60 & 50 Hz, 230/460 & 190/380 V,
3600 & 3000 RPM, 184T Frame, EPFC



Regal and Marathon are trademarks of Regal Rexnord Corporation or one of its affiliated companies.
©2023 Regal Rexnord Corporation, All Rights Reserved. MC017097E



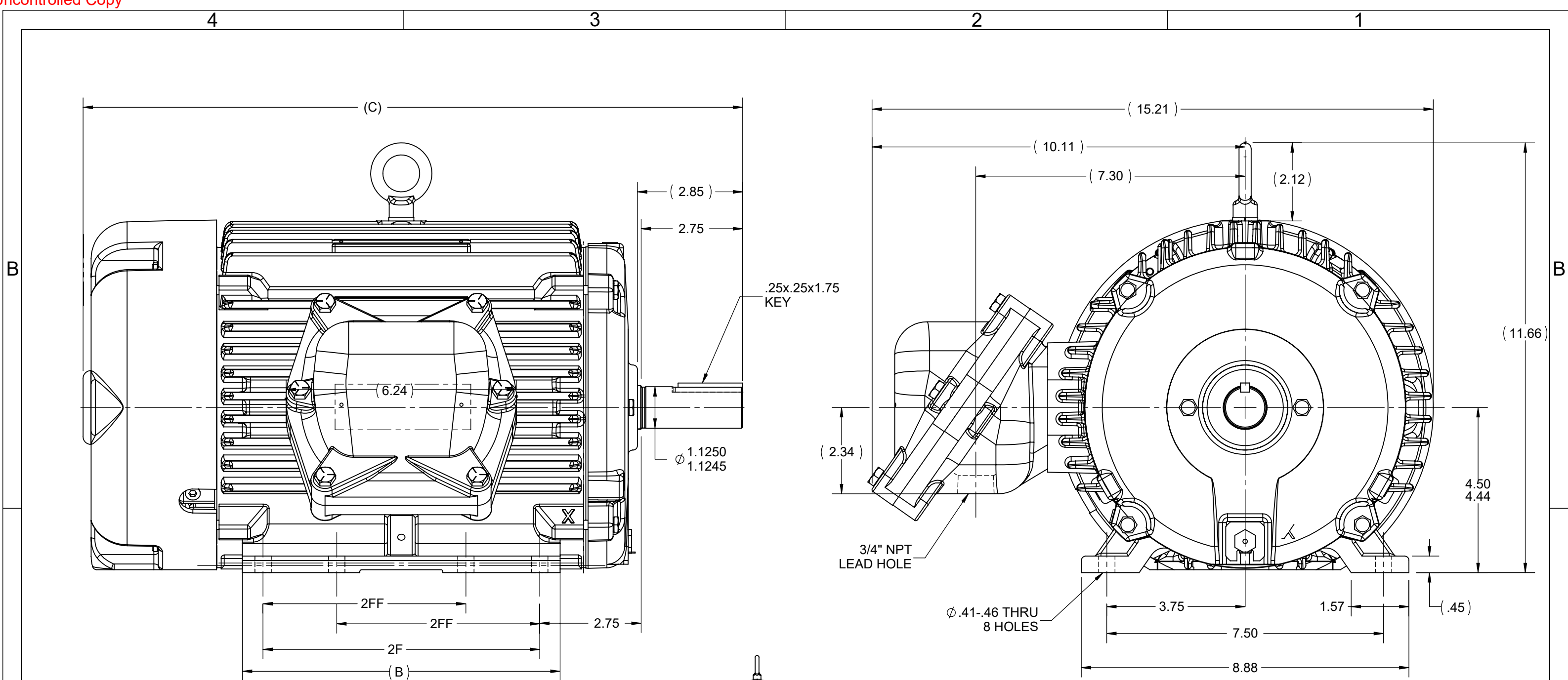
Nameplate Specifications

| | | | |
|------------------------|------------------------------------|----------------------------|---|
| Phase | 3 | Output HP | 5 & 3 Hp |
| Output KW | 3.7 & 2.2 kW | Voltage | 230/460 & 190/380 V |
| Speed | 3510 & 2925 rpm | Service Factor | 1.00 & 1.00 |
| Frame | 184T | Enclosure | Explosion Proof Fan cooled |
| Thermal Protection | Thermostat | Efficiency | 88.5 & 85.5 % |
| Ambient Temperature | 50 °C | Frequency | 60 & 50 Hz |
| Current | 12/6 & 9.4/4.7 A | Power Factor | 88 |
| Duty | Continuous | Insulation Class | F |
| Design Code | B | KVA Code | J |
| Drive End Bearing Size | 6206 | Opp Drive End Bearing Size | 6206 |
| UL | UL Listed And CSA Certified | CSA | Y |
| CE | N | IP Code | 54 |
| Number of Speeds | 1 | Hazardous Location | DIV 1 EXP PROOF CL I GR CD CL II GR FG T3C |

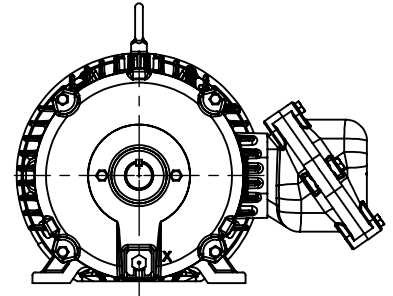
Technical Specifications

| | | | |
|-----------------------|-------------------------------------|--------------------|-------------------------|
| Electrical Type | Squirrel Cage Inverter Rated | Starting Method | Line Or Inverter |
| Poles | 2 | Rotation | Reversible |
| Resistance Main | 3.55 Ohms | Mounting | Rigid Base |
| Motor Orientation | Horizontal | Drive End Bearing | Ball |
| Opp Drive End Bearing | Ball | Frame Material | Cast Iron |
| Shaft Type | T | Shaft Diameter | 1.125 in |
| Assembly/Box Mounting | F1 ONLY | Inverter Load | CONSTANT 10:1 |
| Outline Drawing | 035660-800 | Connection Drawing | EE7308T |

This is an uncontrolled document once printed or downloaded and is subject to change without notice. Date Created:11/29/2023



- NOTES:
 1. NAMEPLATE TO BE READ FROM CONDUIT BOX SIDE OF MOTOR.
 2. CONDUIT BOX CAN ROTATED IN 90° STEPS.
 3. CONDUIT BOX CAN MOUNTED ON OPPOSITE SIDE BY REMOVING BRACKETS AND TURNING FRAME 180°. THIS MODIFICATION CAN BE PERFORMED ONLY BY THE ORIGINAL EQUIPMENT MANUFACTURER, OR BY A FACILITY THAT IS COVERED UNDER UNDERWRITERS LABORATORIES INC. CATEGORY PTKQ. TITLED "MOTORS AND GENERATORS REBUILT FOR USE IN HAZARDOUS LOCATIONS."



F2 LOCATION

| | | | | | | |
|-------------|--------------|----------|----------|-----------|------------|-----------|
| 1000 | 184 | 17.87 | 8.61 | 7.50 | 5.50 | 3.75 |
| 800 | 182/184 | 15.87 | 6.61 | 5.50 | 4.50 | 2.75 |
| DASH | FRAME | C | B | 2F | 2FF | BS |

| | | | | | |
|--|-------------------|-------------------------------|--|------------------------|--|
| DRAWING REVISION G | REVISION BY MN | REV DATE/© DATE 03/14/2022 | TOLERANCES (EXCEPT AS NOTED): DEC. INCH mm ANGLE .X ±0.1 [±3] ±7° 30" .XX ±0.03 [±0.8] .XXX ±0.005 [±0.13] .XXXX ±0.0005 [±0.013] REMOVE BURRS & BREAK SHARP EDGES: .003/.015 [.08/.38] X 45° CORNER FILLETS: R.02 [.5] MACHINED SURFACES: 200 / 5.1 INCH / mm mm DIMENSIONS IN [BRACKETS] ARE FOR REFERENCE ONLY | DRAWN BY CTO | Regal Rexnord Regal Beloit America, Inc. |
| REQUEST NUMBER NMR-0213126 | APPROVED BY MN | DATE 03/14/2022 | | DATE 07-05-2007 | |
| REQUEST NUMBER DESCRIPTION UPDATED VIEWS | | | | APPROVED BY SW | DESCRIPTION OUTLINE |
| COPYRIGHT (PER REVISION DATE) REGAL BELOIT AMERICA, INC. ALL RIGHTS RESERVED. PROPRIETARY AND CONFIDENTIAL INFORMATION - THIS DOCUMENT IS THE PROPERTY OF REGAL BELOIT AMERICA, INC. ("OWNER") AND CONTAINS OWNER'S PROPRIETARY INFORMATION. ANY PERSON, CORPORATION OR OTHER FIRM RECEIVING IT IS DEEMED, BY RECEIVING IT, TO AGREE THAT IT, AND/OR ANY PART OF IT, SHALL NOT BE DISCLOSED TO ANY PERSON, CORPORATION OR OTHER ENTITY, DUPLICATED, AND/OR USED, EXCEPT AS EXPRESSLY APPROVED IN WRITING IN ADVANCE BY OWNER. THIS DOCUMENT SHALL BE RETURNED TO OWNER UPON REQUEST. IT MAY BE SUBJECT TO CERTAIN RESTRICTIONS UNDER APPLICABLE EXPORT CONTROL LAWS AND REGULATIONS. | | | | DATE 3/26/2008 | 180 FR. |
| | | | | REFERENCE | MATERIAL |
| | | | | THIRD ANGLE PROJECTION | PROCESS/FINISH |
| | | | | SIZE B | DRAWING NUMBER 035660 |
| | | | | | SHEET 1 OF 1 |

HIGH VOLTAGE



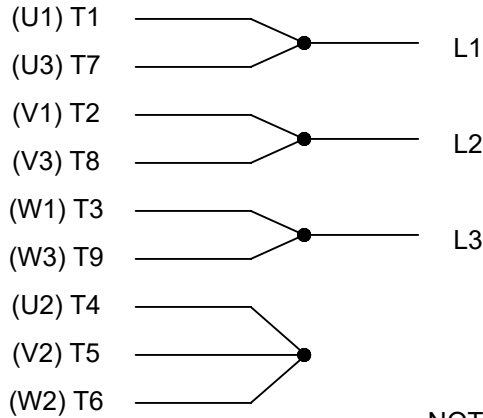
**THREE PHASE
DUAL VOLTAGE MOTOR**

THERMO-PROTECTORS
CONNECTED IN SERIES



NOTE FOR FACTORY USE ONLY:
TO SURGE TEST FOR COMMON CONNECT:
HIGH VOLT: CONNECT P1 TO T1
THEN P2 TO L1
LOW VOLT: CONNECT P1 TO T1 & T7,
THEN P2 TO L1

LOW VOLTAGE



VIEW OF TERMINAL END

NOTE: LEAD'S COLOR CAN BE YELLOW OR WHITE FOR MT2 PLANT

| | | | | | |
|---|-------------------|--------------------|----------------------------|--------------------|---|
| DRAWING REVISION T | REVISION BY ZR | DATE 01-14-2019 | | DRAWN BY SMC | Regal Beloit America, Inc. |
| ECO ECO-0159915 | APPROVED BY DR | DATE 01-15-2019 | | DATE 05-13-1992 | |
| ECO DESCRIPTION ADDED TERMINAL CONNECTION DIAGRAM | | | | APPROVED BY TB | DESCRIPTION CONN DIAGRAM-INTERNAL 3 PHASE - DUAL VOLTAGE MOTOR |
| <small>COPYRIGHT REGAL BELOIT AMERICA, INC. ALL RIGHTS RESERVED. PROPRIETARY AND CONFIDENTIAL INFORMATION - THIS DOCUMENT IS THE PROPERTY OF REGAL BELOIT AMERICA, INC. ("OWNER") AND CONTAINS OWNER'S PROPRIETARY INFORMATION. ANY PERSON, CORPORATION OR OTHER FIRM RECEIVING IT IS DEEMED, BY RECEIVING IT, TO AGREE THAT IT, AND/OR ANY PART OF IT, SHALL NOT BE DISCLOSED TO ANY PERSON, CORPORATION OR OTHER ENTITY, DUPLICATED, AND/OR USED, EXCEPT AS EXPRESSLY APPROVED IN WRITING IN ADVANCE BY OWNER. THIS DOCUMENT SHALL BE RETURNED TO OWNER UPON REQUEST. IT MAY BE SUBJECT TO CERTAIN RESTRICTIONS UNDER APPLICABLE EXPORT CONTROL LAWS AND REGULATIONS.</small> | | | DATE 05-13-1992 | MATERIAL | PROCESS/FINISH |
| | | | REFERENCE EE7308/EE7300 | SIZE A | DRAWING NUMBER EE7308T |
| | | | THIRD ANGLE PROJECTION | | |



P.O. BOX 8003
 WAUSAU, WI 54401-8003
 PH. 715-875-3311

DATA VOLTS: 460

CERTIFICATION DATA SHEET

CUSTOMER: _____
 ORDER #: _____
 CONN. DIAGRAM: EE7308T
 OUTLINE: 035660-800
 WINDING: HA31122016 R2 3
 SPEED: _____

CUSTOMER P.O. #: _____
 REFERENCE MODEL #: 184TTGCD6501
 CAT #: U061B
 CUSTOMER PART #: _____
 MOUNTING: F1 ONLY

TYPICAL MOTOR PERFORMANCE DATA

| HP | KW | SYNC RPM | FL RPM | FRAME | ENCLOSURE | TYPE | KVA CODE | DESIGN |
|----|-----|----------|--------|-------|-----------|------|----------|--------|
| 5 | 3.7 | 3600 | 3510 | 184T | EPFC | TFC | J | B |

| PH | HZ | VOLTS | AMPS | START TYPE | DUTY | INSL | S.F. | AMB | ELEV. |
|----|-------|-----------------|--------------|-----------------|------|------|------|-----|-------|
| 3 | 60/50 | 230/460#190/380 | 12/6&9/4/4.7 | ACROSS THE LINE | CONT | F | 1.00 | 50 | 3300 |

| F.L. EFF | 3/4 LD EFF | 88.5 | 88.5 | 1/2 LD EFF | 87.5 | GTD EFF | ELECT. TYPE |
|----------|------------|------|------|------------|------|---------|-----------------|
| F.L. PF | 3/4 LD PF | 88.0 | 83.0 | 1/2 LD PF | 73.0 | 87.5 | SQ CAGE IND RUN |

| F.L. TORQUE | LR AMPS @ 460 V | L.R. TORQUE | B.D. TORQUE | F.L. RISE (° C) |
|-------------|-----------------|-------------|-------------|-----------------|
| 7.5 LB-FT | 45.0 | 14.0 LB-FT | 187% | 25.0 LB-FT |
| | | | | 333% |

| SOUND PRESSURE @ 3 FT. | SOUND POWER | ROTOR WK ² | MAX. LOAD WK ² | SAFE STALL TIME | STARTS/HOUR | APROX. MOTOR WGT |
|------------------------|-------------|-------------------------|---------------------------|-----------------|-------------|------------------|
| 70 dBA | 79 dBA | 0.23 LB-FT ² | 5.5 LB-FT ² | 15 SEC. | 2 | 140 LB. |

***** SUPPLEMENTAL INFORMATION *****

| DE BRACKET TYPE | ODE BRACKET TYPE | MOUNT TYPE | MOTOR ORIENTATION | SEVERE DUTY | HAZARDOUS LOCATION | DRIP COVER | SCREENS | PAINT |
|-----------------|------------------|------------|-------------------|---------------------|--|------------|---------|-------------------------|
| STANDARD | STANDARD | RIGID | HORIZONTAL | PREMIUM SEVERE DUTY | DIV 1 EXP PROOF CL I GR CD CL II GR FG T3C | NO | NONE | BLUE - RAL 5003 (EPOXY) |

| BEARINGS | GREASE | SHAFT TYPE | SPECIAL DE | SPECIAL ODE | SHAFT MATERIAL | FRAME MATERIAL |
|-----------|------------|------------|------------|-------------|-------------------------|----------------|
| DE ODE | POLYREX EM | T | NONE | NONE | 1045 HOT ROLLED (C-204) | CAST IRON |
| BALL BALL | | | | | | |
| 6206 6206 | | | | | | |

| THERMOSTATS | PROTECTORS | WDG RTD's | BRG RTD's | THERMISTORS | CONTROL | SPACE HEATERS |
|--------------|------------|-----------|-----------|-------------|---------|---------------|
| TSTATS (N/C) | NOT | NONE | NONE | NONE | FALSE | NA |

| R1 (ohms/ph) | R2 (ohms/ph) | X1 (ohms/ph) | X2 (ohms/ph) | Xm (ohms/ph) | VIBRATION (in/sec) | FLOAT |
|--------------|--------------|--------------|--------------|--------------|--------------------|-------|
| 2.098 | 1.021 | 3.969 | 1.588 | 112.379 | 0.080 | ODE |

| | |
|---------------------------------|---------------------------|
| * N O T E S * | INVERTER TORQUE: NONE |
| | INV. HP SPEED RANGE: NONE |
| | ENCODER: NONE |
| | NONE PPR |
| | BRAKE: NONE |

| | | | | |
|---------------------------|---|-----------|------|-----|
| PREPARED BY: _____ | NONE | FT-LB: NA | NONE | HZ: |
| DATE: 10/19/2022 | VOLTAGE: NONE | | | |
| FORM: 3531 REV. 4 2/27/06 | UL: NO LETTER - ALL BRANDS-UL LISTED AND CSA CERTIFIED DIV. 1 XP MOTORS | | | |

Data Sheet

Date: 7/28/2022
 Customer: _____
 Attention: _____
 Submitted by: _____



184TTGCD6501
 112013.002 FAN
Submittal
 Data @ **460 V**

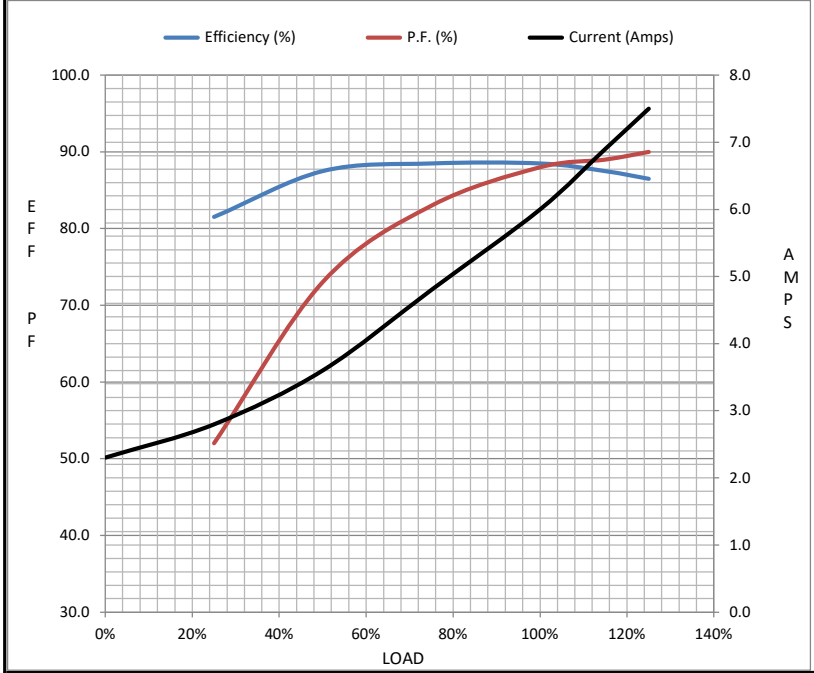
Motor Load Data

| Load | 0% | 25% | 50% | 75% | 100% | 115% | 125% | LR |
|----------------|------|------|------|------|------|-------|------|------|
| Current (Amps) | 2.30 | 2.80 | 3.6 | 4.8 | 6.0 | 6.9 | 7.5 | 45.0 |
| Torque (ft-lb) | 0.00 | 1.85 | 3.7 | 5.6 | 7.5 | 8.6 | 9.4 | 14.0 |
| RPM | 3600 | 3580 | 3555 | 3535 | 3510 | 3,500 | 3490 | 0 |
| Efficiency (%) | | 81.5 | 87.5 | 88.5 | 88.5 | 87.5 | 86.5 | |
| P.F. (%) | 9.0 | 52.0 | 73.0 | 83.0 | 88.0 | 89.0 | 90.0 | 50.0 |

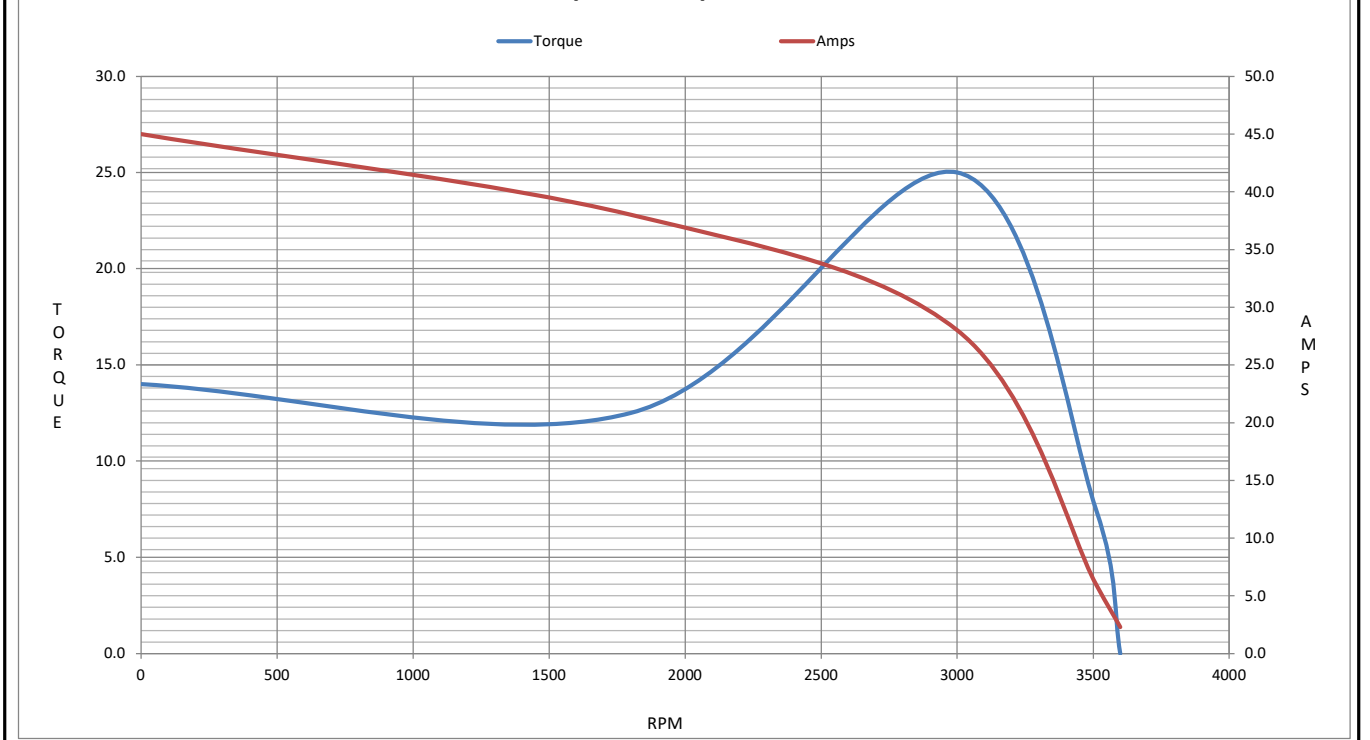
Motor Speed Data

| | LR | Pull-Up | BD | Rated | Idle |
|----------------|------|---------|------|-------|------|
| Speed (RPM) | 0 | 1800 | 3000 | 3510 | 3600 |
| Current (Amps) | 45.0 | 38.0 | 28.0 | 6.0 | 2.30 |
| Torque (ft-lb) | 14.0 | 12.5 | 25.0 | 7.5 | 0.00 |

| Information Block | | | | |
|-----------------------------|-------------------------|--------|--------|----------|
| HP | 5.0 | | | |
| Sync. RPM | 3600 | | | |
| Frame | 182 | | | |
| Enclosure | EPFC | | | |
| Construction | TFB | | | |
| Voltage | 230/460#190/380 V | | | |
| Frequency | 60 Hz | | | |
| Design | B | | | |
| LR Code letter | J | | | |
| Service Factor | 1.0 | | | |
| Temp Rise @ FL | 50 ° C | | | |
| Duty | CONT | | | |
| Ambient | 40 ° C | | | |
| Elevation | 1,000 feet | | | |
| Rotor/Shaft wk ² | 0.23 Lb-Ft ² | | | |
| Ref Wdg | HA31122016 NONE | | | |
| Sound Pressure @ 1M | 70 dBA | | | |
| VFD Rating | NONE | | | |
| Outline Dwg | 035660-800 | | | |
| Conn. Diag | EE7308T | | | |
| Additional Specifications: | | | | |
| 0 | | | | |
| 0 | | | | |
| EQUIV CKT (OHMS / PHASE) | | | | |
| R1 | R2 | X1 | X2 | Xm |
| 2.0980 | 1.0210 | 3.9690 | 1.5880 | 112.3790 |



Speed - Torque Curve



CERTIFICATE OF COMPLIANCE

Certificate Number 20220218- E12044
Report Reference E12044-20090313
Issue Date 2022-FEBRUARY-18

Issued to: REGAL BELOIT AMERICA INC
1946 W COOK RD
FORT WAYNE IN 46818

Tradename: Marathon

This certificate confirms that representative samples of

MOTORS FOR USE IN HAZARDOUS LOCATIONS
Electric motors for use in hazardous locations; Class I, Groups C and D; Class II, Groups F and G; Inclusive of Model Number 184TTGCD6501 (may have prefix and/or suffix characters).

Have been investigated by UL in accordance with the Standard(s) indicated on this Certificate.

Standard(s) for Safety: UL 674 - Electric Motors and Generators for Use in Division 1 Hazardous (Classified) Locations, CSA C22.2 No. 145, Electric Motors and Generators for Use in Hazardous (Classified) Locations

Additional Information: See the UL Online Certifications Directory at <https://iq.ulprospector.com> for additional information.

This *Certificate of Compliance* does not provide authorization to apply the UL Mark. Only the UL Follow-Up Services Procedure provides authorization to apply the UL Mark.

Only those products bearing the UL Mark should be considered as being UL Certified and covered under UL's Follow-Up Services.

Look for the UL Certification Mark on the product.

This is to certify that representative samples of the product as specified on this certificate were tested according to the current UL requirements.



Bruce Mahrenholz, Director North American Certification Program
UL LLC

Any information and documentation involving UL Mark services are provided on behalf of UL LLC (UL) or any authorized licensee of UL. For questions, please contact a local UL Customer Service Representative at <http://ul.com/aboutul/locations/>

