

PRODUCT INFORMATION PACKET

marathon®
Motors

Model No: 184TTFW8002

Catalog No: C1204

General Purpose Motor, 5 & 3 HP, 3 Ph, 60 & 50 Hz, 208-230/460 & 190/380 V, 3600 & 3000 RPM,
184TC Frame, TEFC



Regal and Marathon are trademarks of Regal Rexnord Corporation or one of its affiliated companies.

©2023 Regal Rexnord Corporation, All Rights Reserved. MC017097E

RegalRexnord

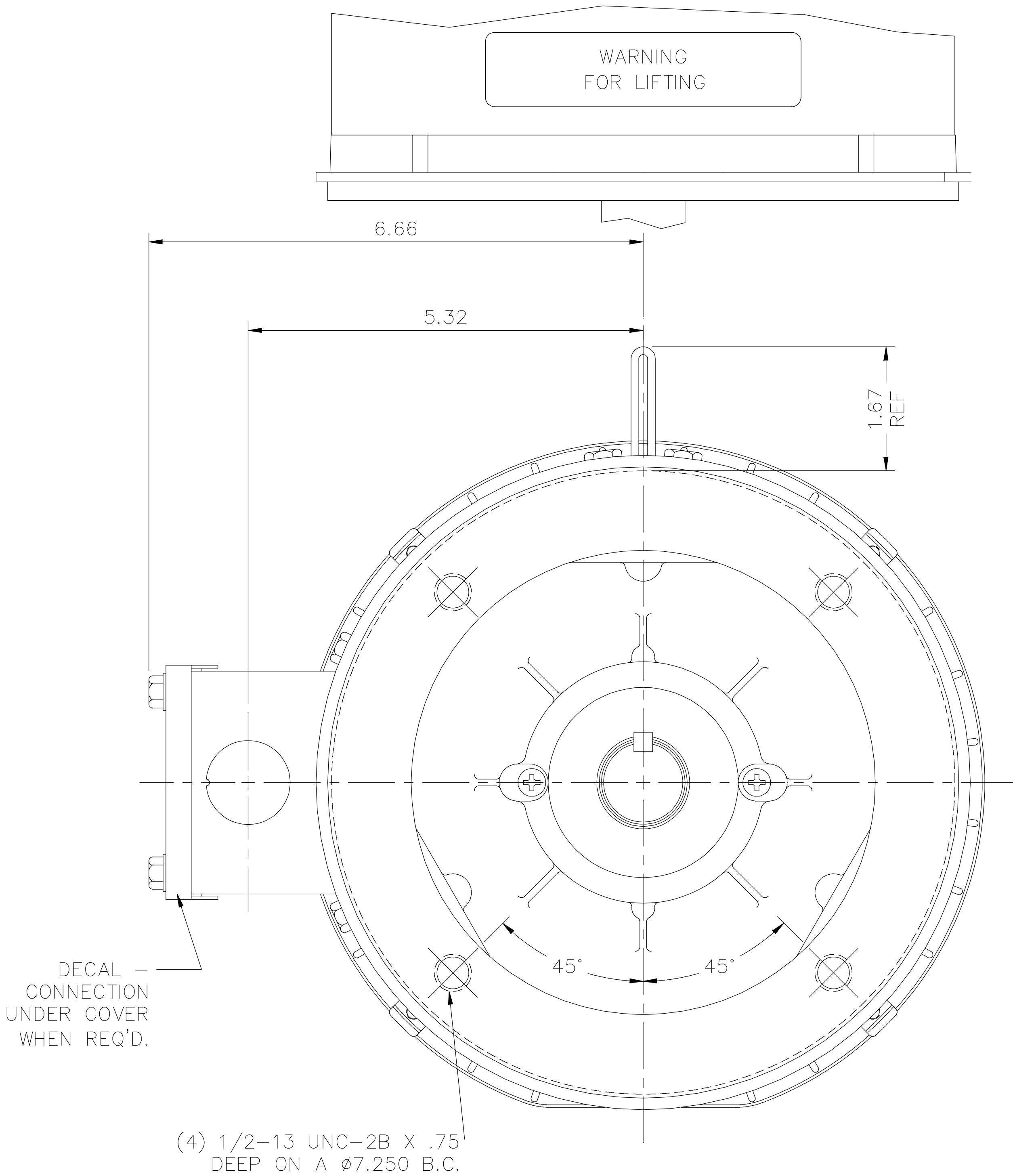
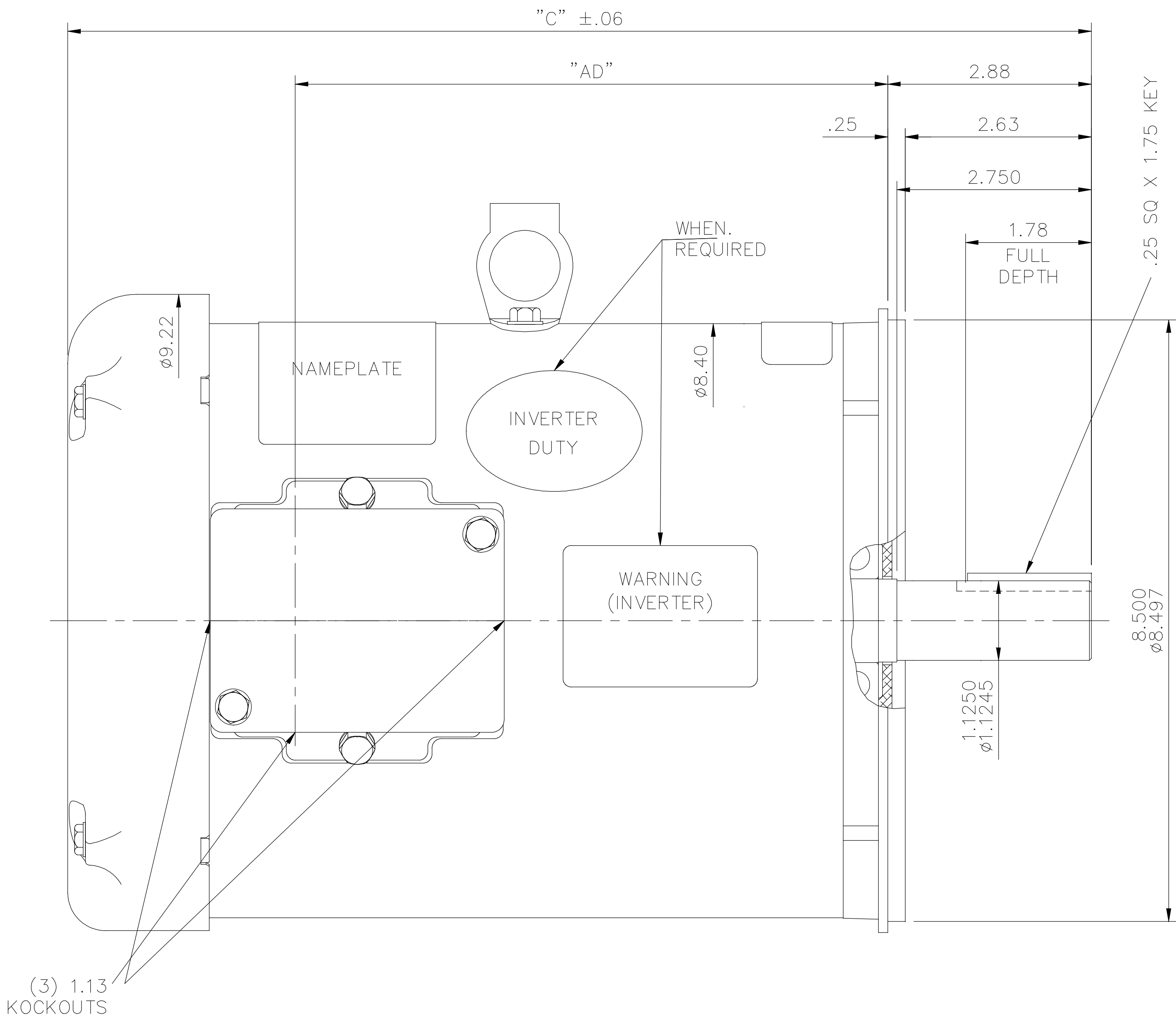
Nameplate Specifications

Phase	3	Output HP	5 & 3 Hp
Output KW	3.7 & 2.2 kW	Voltage	208-230/460 & 190/380 V
Speed	3495 & 2930 rpm	Service Factor	1.15 & 1.15
Frame	184TC	Enclosure	Totally Enclosed Fan Cooled
Thermal Protection	No Protection	Efficiency	85.5 & 84 %
Ambient Temperature	40 °C	Frequency	60 & 50 Hz
Current	13.6-12.4/6.2 & 9.4/4.7 A	Power Factor	89.5
Duty	Continuous	Insulation Class	F
Design Code	B	KVA Code	J
Drive End Bearing Size	6206	Opp Drive End Bearing Size	6205
UL	Recognized	CSA	Y
CE	Y	IP Code	43
Number of Speeds	1		

Technical Specifications


Electrical Type	Squirrel Cage Induction Run	Starting Method	Across The Line
Poles	2	Rotation	Reversible
Resistance Main	0 Ohms	Mounting	Round
Motor Orientation	Horizontal	Drive End Bearing	Ball
Opp Drive End Bearing	Ball	Frame Material	Rolled Steel
Shaft Type	T	Overall Length	13.97 in
Frame Length	8.50 in	Shaft Diameter	1.130 in
Shaft Extension	2.88 in	Assembly/Box Mounting	F1 ONLY
Connection Drawing	005010.01ME	Outline Drawing	035570-850

035570



GASKETS THROUGHOUT
MAXIMUM FACE RUNOUT TO BE .004 T.I.R.
MAXIMUM PILOT ECCENTRICITY TO BE .004 T.I.R.
PERMISSIBLE SHAFT RUNOUT TO BE .002 T.I.R.

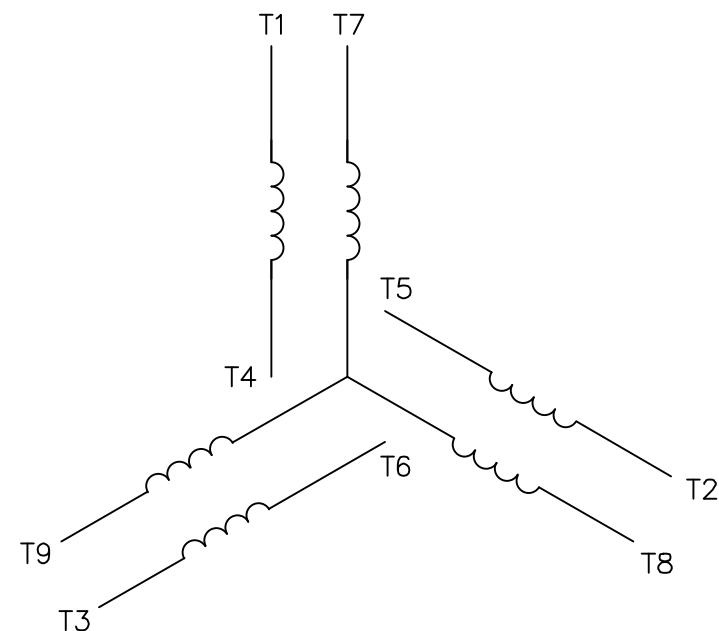
DASH NO.	"C"	"AD"
750	12.97	6.88
800	13.47	7.38
850	13.97	7.88
900	14.47	8.38
950	14.97	8.88
1000	15.47	9.38
1050	15.97	9.88
1100	16.47	10.38
1150	16.97	10.88

			ST	TOLERANCES UNLESS SPECIFIED		 MARATHON ELECTRIC			DRAWN VV 09/17/07	
				DEC.	INCHES				CHK YS 09/17/07	
				.X	±.1	TITLE OUTLINE – 180TC FRAME TEFC – "C" FACE			APPD	
				.XX	±.03				SCALE 1=2	
				.XXX	±.005				REF 035537	
F	LABELS ADDED PER ECO	SD 8/12/2019		.XXXX	±.0005	MAT'L. GENERAL PURPOSE			FMF	
NO.	REVISION	BY & DATE	CHK	ANG	±1/2"	FINISH			PREV	
THIS DRAWING IN DESIGN AND DETAIL IS OUR PROPERTY AND MUST NOT BE USED EXCEPT IN CONNECTION WITH OUR WORK ALL RIGHTS OF DESIGN AND INVENTION ARE RESERVED THIS IS AN ELECTRONICALLY GENERATED DOCUMENT – DO NOT SCALE THIS PRINT			RFP		CAD FILE 035570			SIZE B	DRAWING NO. 035570	REV. F
			DIST NLV							

VIEW FROM OUTSIDE OF MOTOR AT SWITCH END.



LINE LEADS



VOLTAGE	L1	L2	L3	JOIN & INSULATE
HIGH	T1	T2	T3	(T4,T7) (T5,T8) (T6,T9)
LOW	T1,T7	T2,T8	T3,T9	T4,T5,T6

				TOLERANCES UNLESS SPECIFIED			DRAWN RDW 04/12/02			
				DEC.	INCHES		CHK			
				.X	±.1		APPD			
				.XX	±.01		SCALE 1=1			
				.XXX	±.005	TITLE EXTERNAL WIRING DIAGRAM 3 PHASE W/O PROTECTOR		REF FIG.2—51		
				.XXXX	±.0005	MAT'L. DECAL — 004014		FMF		
NO.	REVISION	BY & DATE	CHK	ANG	±1/2"	FINISH		PREV		
THIS DRAWING IN DESIGN AND DETAIL IS OUR PROPERTY AND MUST NOT BE USED EXCEPT IN CONNECTION WITH OUR WORK ALL RIGHTS OF DESIGN AND INVENTION ARE RESERVED THIS IS AN ELECTRONICALLY GENERATED DOCUMENT — DO NOT SCALE THIS PRINT			RFP	04/12/02		CAD FILE 00501001ME		SIZE	DRAWING NO.	REV.
			DIST				A	005010—01ME		

Data Sheet

Date: 12/13/2018

Customer: _____

Attention: _____

Submitted by: FAREEDA DUDEKULA



184TTFW8002

Submittal

Data @ 460 V

Motor Load Data

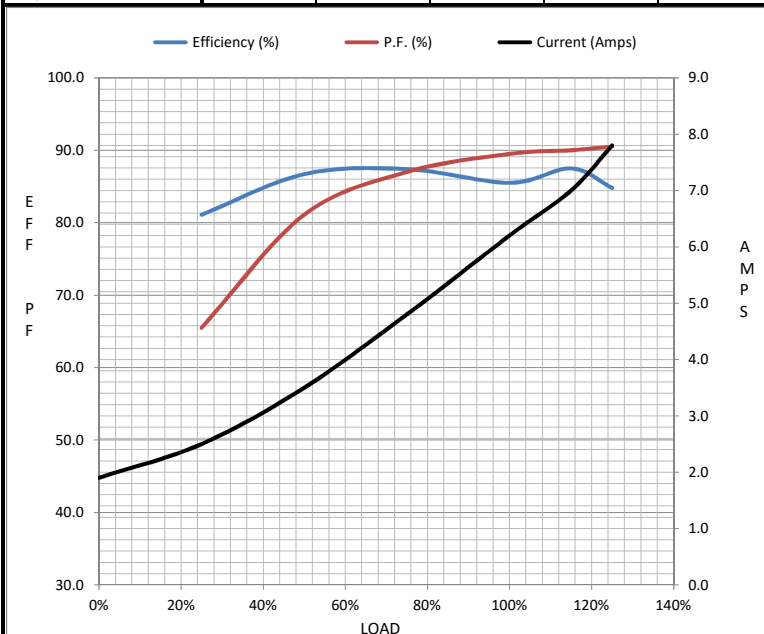
Load	0%	25%	50%	75%	100%	115%	125%	LR	
Current (Amps)	1.90	2.50	3.5	4.8	6.2	7.0	7.8	48.0	
Torque (ft-lb)	0.00	1.80	3.7	5.6	7.5	8.7	9.5	16.3	
RPM	3600	3577	3552	3525	3495	3,477	3460	0	
Efficiency (%)		81.1	86.7	87.4	85.5	87.5	84.8		
P.F. (%)	19.5	65.5	81.1	87.0	89.5	90.0	90.5	53.0	

Motor Speed Data

	LR	Pull-Up	BD	Rated	Idle
Speed (RPM)	0	1800	2850	3495	3600
Current (Amps)	48.0	43.2	31.2	6.2	1.90
Torque (ft-lb)	16.3	14.7	25.0	7.5	0.00

Information Block

HP	5.0			
Sync. RPM	3600			
Frame	184			
Enclosure	TEFC			
Construction	TFR			
Voltage	208-230/460#190/380 V			
Frequency	60 Hz			
Design	B			
LR Code letter	J			
Service Factor	1.15			
Temp Rise @ FL	85 ° C			
Duty	CONT			
Ambient	40 ° C			
Elevation	1,000 feet			
Rotor/Shaft wk²	0.23 Lb-Ft²			
Ref Wdg	T82125 R1			
Sound Pressure @ 1M	75 dBA			
VFD Rating	NONE			
Outline Dwg	035570-850			
Conn. Diag	005010.01ME			
Additional Specifications:				
0				
0				
EQUIV CKT (OHMS / PHASE)				
R1	R2	X1	X2	Xm
2.0750	1.3660	3.1010	1.7920	122.8120



Speed -Torque Curve

