

PRODUCT INFORMATION PACKET



Model No: 184TTFW4040

Catalog No: U1619

5 HP General Purpose Motor, 3 phase, 1800 RPM, 575 V, 184T Frame, TEFC
General Purpose Motors

Regal and Marathon are trademarks of Regal Rexnord Corporation or one of its affiliated companies.
©2021 Regal Rexnord Corporation, All Rights Reserved. MC017097E



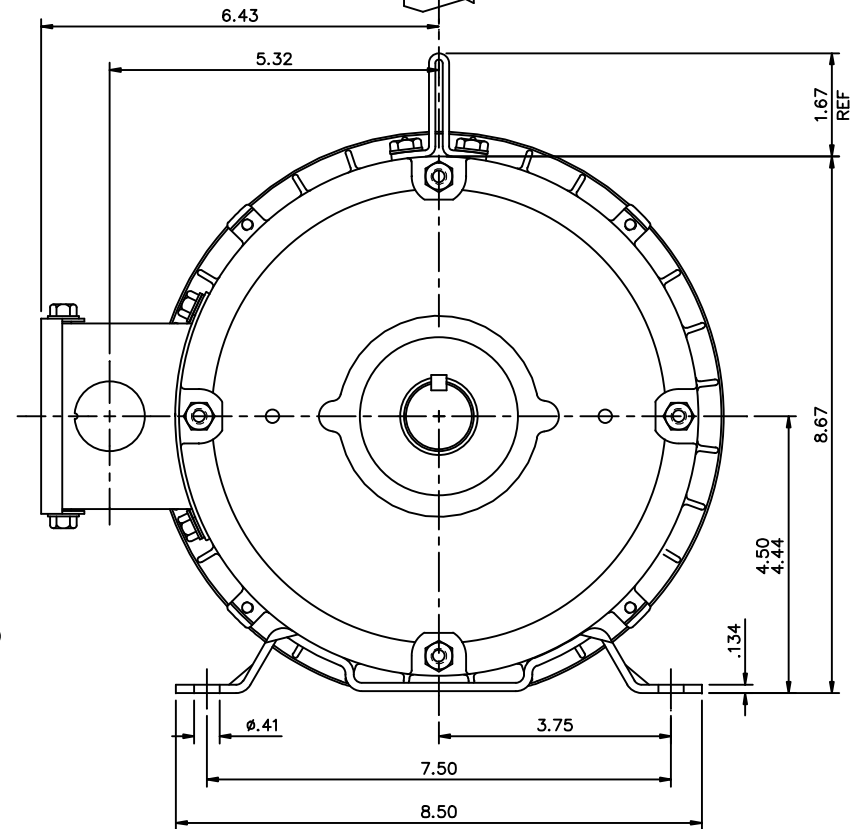
Nameplate Specifications

| | | | |
|------------------------|------------|----------------------------|-----------------------------|
| Output HP | 5 Hp | Output KW | 3.7 kW |
| Frequency | 60 Hz | Voltage | 575 V |
| Current | 5.2 A | Speed | 1760 rpm |
| Service Factor | 1.15 | Phase | 3 |
| Efficiency | 87.5 % | Power Factor | 81.6 |
| Duty | Continuous | Insulation Class | F |
| Design Code | B | KVA Code | J |
| Frame | 184T | Enclosure | Totally Enclosed Fan Cooled |
| Thermal Protection | No | Ambient Temperature | 40 °C |
| Drive End Bearing Size | 6206 | Opp Drive End Bearing Size | 6205 |
| UL | Recognized | CSA | Y |
| CE | Y | IP Code | 43 |
| Number of Speeds | 1 | | |


Technical Specifications

| | | | |
|-----------------------|-----------------------------|-----------------------|-----------------|
| Electrical Type | Squirrel Cage Induction Run | Starting Method | Across The Line |
| Poles | 4 | Rotation | Reversible |
| Resistance Main | 3.08 Ohms | Mounting | Rigid Base |
| Motor Orientation | Horizontal | Drive End Bearing | Ball |
| Opp Drive End Bearing | Ball | Frame Material | Rolled Steel |
| Shaft Type | T | Overall Length | 13.96 in |
| Frame Length | 8.50 in | Shaft Diameter | 1.125 in |
| Shaft Extension | 2.75 in | Assembly/Box Mounting | F1 ONLY |
| Connection Drawing | 005102.01ME | Outline Drawing | 035533-850 |

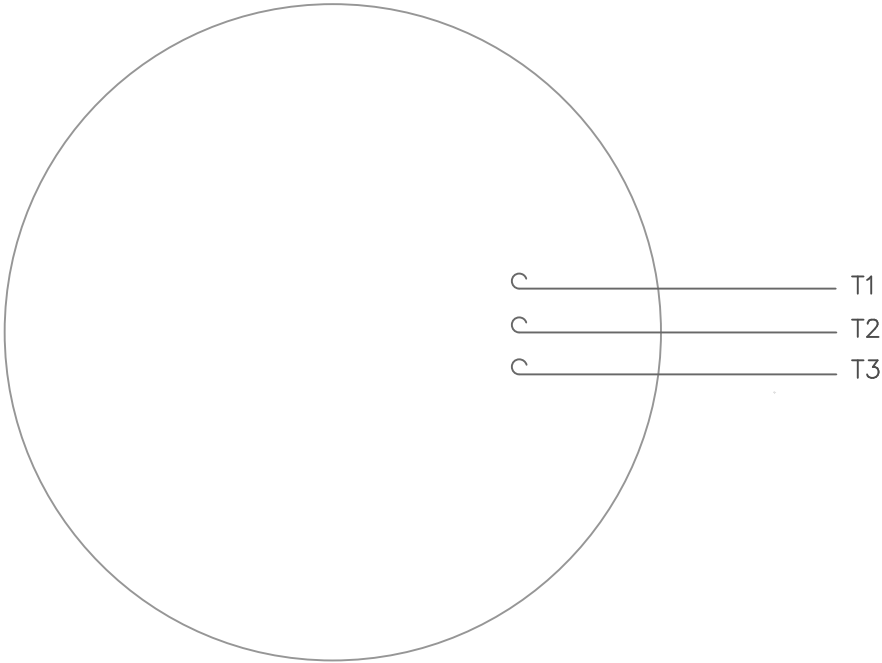
This is an uncontrolled document once printed or downloaded and is subject to change without notice. Date Created:10/12/2021



| DASH NO. | "C" | "AD" |
|----------|-------|------|
| 750 | 12.96 | 4.25 |
| 800 | 13.46 | 4.75 |
| 850 | 13.96 | 5.25 |
| 900 | 14.46 | 5.75 |
| 950 | 14.96 | 6.25 |
| 1000 | 15.46 | 6.75 |
| 1050 | 15.96 | 7.25 |
| 1100 | 16.46 | 7.75 |
| 1150 | 16.96 | 8.25 |


| | | | | | | | | | | |
|--|---|------------|-----|-------|--------------------------------|---|----------------------|-----------------|--------------------|---------|
| | | | | | TOLERANCES UNLESS SPECIFIED |  | DRAWN SVL 06/22/2007 | | | |
| | | | | | DEC. INCHES | | CHK AT 06/22/2007 | | | |
| | | | | .X | ±.1 | | APPD SVL 06/22/2007 | | | |
| | | | | .XX | ±.03 | TITLE OUTLINE - 180T FRAME TEFC - RIGID | SCALE 1=2 | | | |
| | | | | .XXX | ±.005 | | REF 035524 | | | |
| 01 | ADDED INVERTER DUTY DECAL PER ECR 85570 | GWS 2/8/08 | | .XXXX | ±.0005 | | MAT'L | FMF 182ITFR4026 | | |
| NO. | REVISION | BY & DATE | CHK | ANG | ±1/2" | FINISH | PREV | | | |
| THIS DRAWING IN DESIGN AND DETAIL IS OUR PROPERTY AND MUST NOT BE USED EXCEPT IN CONNECTION WITH OUR WORK ALL RIGHTS OF DESIGN AND INVENTION ARE RESERVED THIS IS AN ELECTRONICALLY GENERATED DOCUMENT - DO NOT SCALE THIS PRINT | | | | | | RFP | CAD FILE 035533 | SIZE B | DRAWING NO. 035533 | REV. 01 |
| | | | | | | DIST NLV | | | | |

VIEW FROM OUTSIDE OF MOTOR AT SWITCH END.



CONNECT LEADS AS FOLLOWS
FOR FOUR CONDUCTOR CORD ()

| | | | | |
|-------|-------------|---------------|---------------|---------|
| CORD | L1 (RED) | L2 (WHITE) | L3 (BLACK) | (GREEN) |
| MOTOR | T1 | T2 | T3 | GROUND |

| | | | | | | | | | | | | | |
|--|----------|--|-----------|--------------------------------|--------|---|------------------|---|-------------|------|-------------|--|------|
| | | | | TOLERANCES UNLESS SPECIFIED | |  | DRAWN RDW 5/1/02 | | | | | | |
| | | | | DEC. | INCHES | | CHK | | | | | | |
| | | | | .X | ±.1 | | APPD | | | | | | |
| | | | | .XX | ±.01 | | SCALE 1=1 | | | | | | |
| | | | | .XXX | ±.005 | | REF | | | | | | |
| | | | | .XXXX | ±.0005 | | FMF | | | | | | |
| NO. | REVISION | | BY & DATE | CHK | ANG | ±1/2° | FINISH | | PREV | | | | |
| THIS DRAWING IN DESIGN AND DETAIL IS OUR PROPERTY AND MUST NOT BE USED EXCEPT IN CONNECTION WITH OUR WORK ALL RIGHTS OF DESIGN AND INVENTION ARE RESERVED THIS IS AN ELECTRONICALLY GENERATED DOCUMENT – DO NOT SCALE THIS PRINT | | | | RFP | | 5/1/02 | CAD FILE | | 00510201ME | SIZE | DRAWING NO. | | REV. |
| | | | | DIST | | | | A | 005102-01ME | | | | |