

PRODUCT INFORMATION PACKET



Model No: 184TTFW16080
Catalog No: 184TTFW16080
2,1200,TEFC,184TC,3/60/230/460

Regal and Marathon are trademarks of Regal Rexnord Corporation or one of its affiliated companies.
©2023 Regal Rexnord Corporation, All Rights Reserved. MC017097E



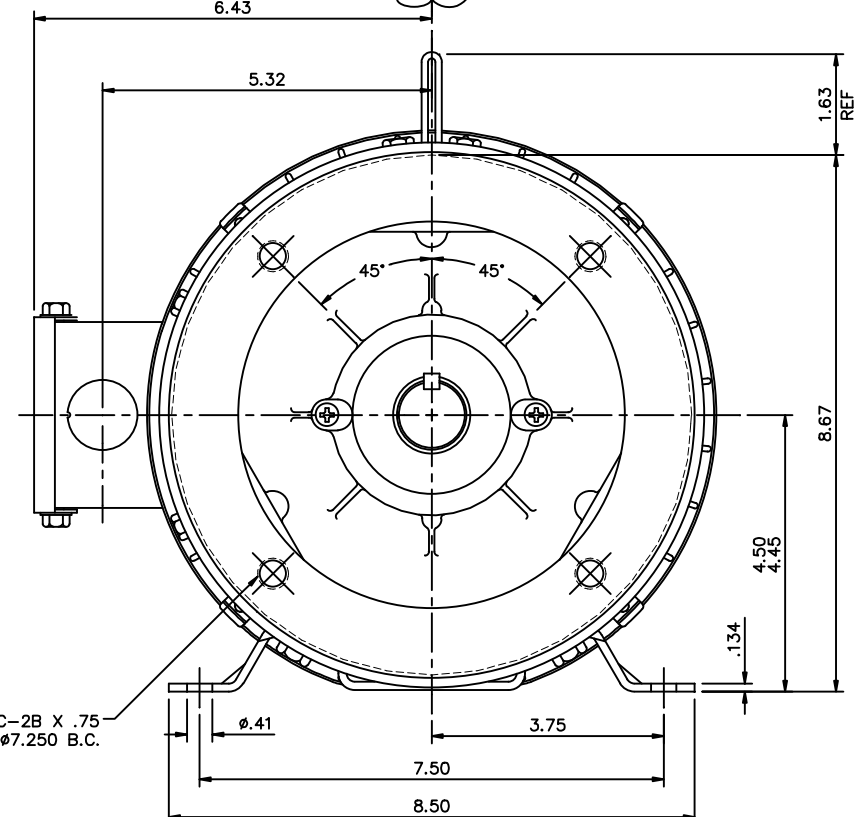
Nameplate Specifications

| | | | |
|------------------------|---------------|----------------------------|-----------------------------|
| Phase | 3 | Output HP | 2 Hp |
| Output KW | 1.5 kW | Voltage | 230/460 V |
| Speed | 1176 rpm | Service Factor | 1.15 |
| Frame | 184TCV | Enclosure | Totally Enclosed Fan Cooled |
| Thermal Protection | No Protection | Efficiency | 88.7 % |
| Ambient Temperature | 50 °C | Frequency | 60 Hz |
| Current | 6.4/3.2 A | Power Factor | 66.5 |
| Duty | Continuous | Insulation Class | F |
| Design Code | B | KVA Code | K |
| Drive End Bearing Size | 6206 | Opp Drive End Bearing Size | 6205 |
| UL | Recognized | CSA | Y |
| CE | Y | IP Code | 43 |
| Number of Speeds | 1 | | |

Technical Specifications

| | | | |
|-----------------------|-----------------------------|-----------------------|-----------------|
| Electrical Type | Squirrel Cage Induction Run | Starting Method | Across The Line |
| Poles | 6 | Rotation | Reversible |
| Resistance Main | 5.4 Ohms | Mounting | Bolt-on Base |
| Motor Orientation | Shaft Down | Drive End Bearing | Ball |
| Opp Drive End Bearing | Ball | Frame Material | Rolled Steel |
| Shaft Type | T | Assembly/Box Mounting | F1/F2 CAPABLE |
| Outline Drawing | 035776-950 | Connection Drawing | 005010.01ME |

This is an uncontrolled document once printed or downloaded and is subject to change without notice. Date Created:08/24/2023

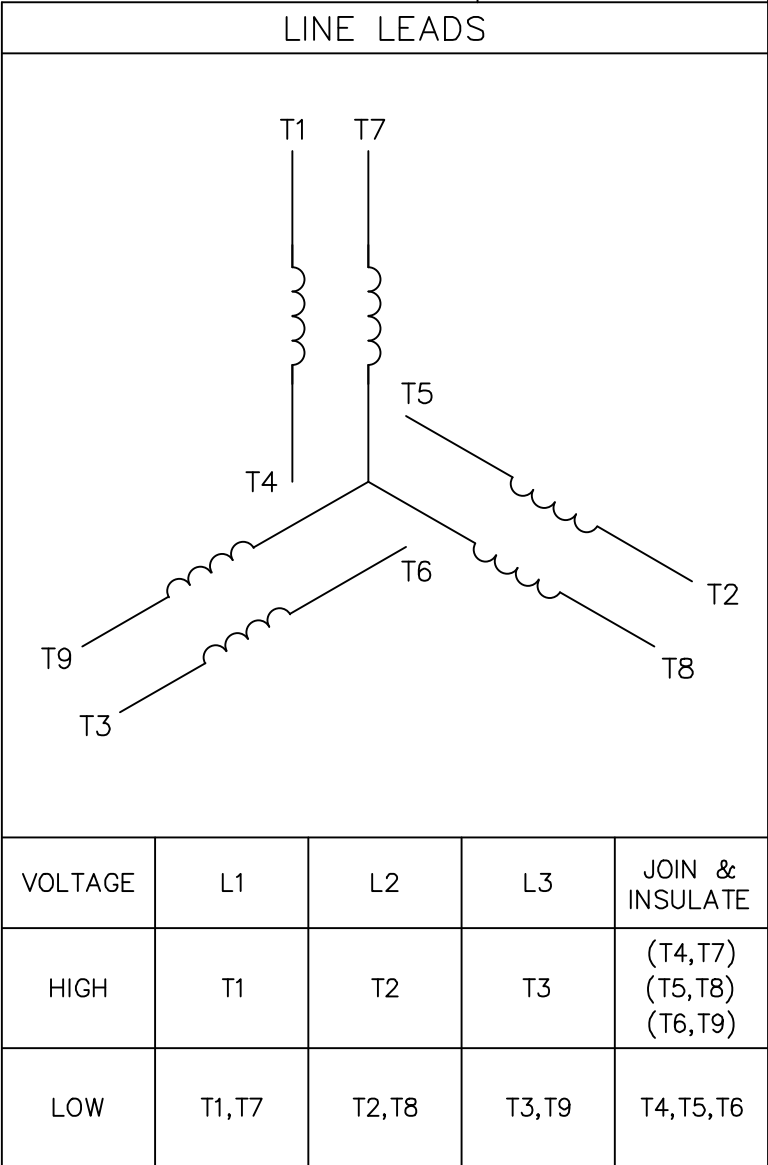
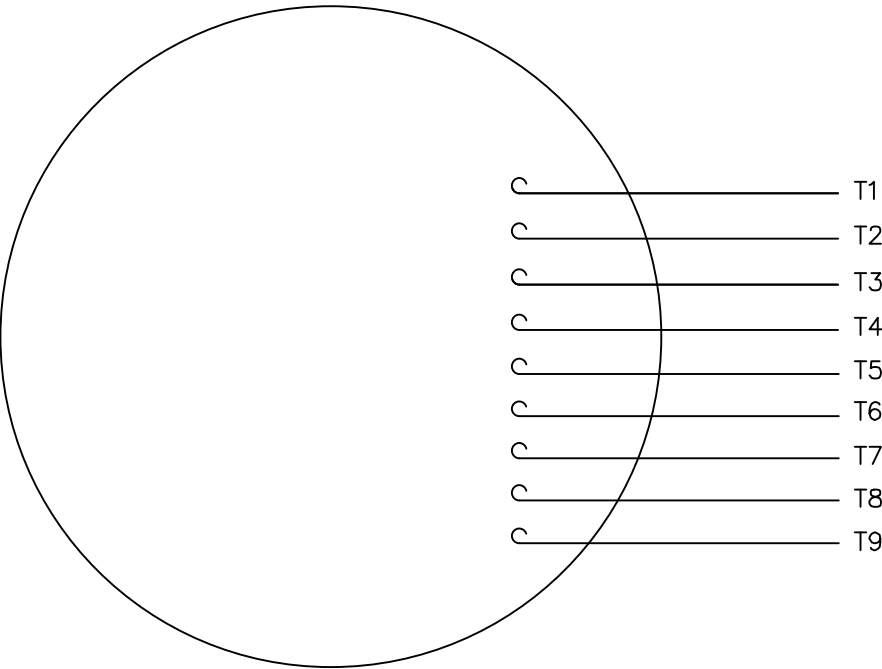


MAXIMUM FACE RUNOUT TO BE .004 T.I.R.
MAXIMUM PILOT ECCENTRICITY TO BE .004 T.I.R.
PERMISSIBLE SHAFT RUNOUT TO BE .002 T.I.R.


| DASH NO. | "C" | "AD" |
|----------|-------|------|
| 850 | 13.97 | 4.37 |
| 900 | 14.47 | 4.87 |
| 950 | 14.97 | 5.37 |
| 1000 | 15.47 | 5.87 |
| 1050 | 15.97 | 6.37 |
| 1100 | 16.47 | 6.87 |
| 1150 | 16.97 | 7.37 |

| | | | | | | |
|--|----------|-----------|----------|--------------------------------|---------------------|--------------------------------|
| | | | | TOLERANCES UNLESS SPECIFIED | | DRAWN ST 01/25/2011 |
| | | | DEC. | INCHES | | CHK KA 01/25/2011 |
| | | | .X | ±.1 | | APPD |
| | | | .XX | ±.03 | | SCALE 1=2 |
| | | | .XXX | ±.005 | | REF 035469 |
| | | | .XXXX | ±.0005 | | FMF |
| | | | | MAT'L | BOLT-ON BASE | PREV |
| NO. | REVISION | BY & DATE | CHK | ANG ±1/2" | FINISH | |
| THIS DRAWING IN DESIGN AND DETAIL IS OUR PROPERTY AND MUST NOT BE USED EXCEPT IN CONNECTION WITH OUR WORK ALL RIGHTS OF DESIGN AND INVENTION ARE RESERVED THIS IS AN ELECTRONICALLY GENERATED DOCUMENT - DO NOT SCALE THIS PRINT | | | | | RFP CAD FILE 035776 | SIZE B DRAWING NO. 035776 REV. |
| | | | DIST NLV | | | |

VIEW FROM OUTSIDE OF MOTOR AT SWITCH END.



| VOLTAGE | L1 | L2 | L3 | JOIN & INSULATE |
|---------|-------|-------|-------|-------------------------------|
| HIGH | T1 | T2 | T3 | (T4,T7) (T5,T8) (T6,T9) |
| LOW | T1,T7 | T2,T8 | T3,T9 | T4,T5,T6 |

| | | | | | | | | | | | | | | |
|--|----------|-----------|------|--------------------------------|----------|--|---|--|------------|-------------|------|-------------|--|------|
| | | | | TOLERANCES UNLESS SPECIFIED | |  MARATHON ELECTRIC | DRAWN RDW 04/12/02 | | | | | | | |
| | | | | DEC. | INCHES | | CHK | | | | | | | |
| | | | | .X | ±.1 | | APPD | | | | | | | |
| | | | | .XX | ±.01 | | TITLE EXTERNAL WIRING DIAGRAM 3 PHASE W/O PROTECTOR | | | | | | | |
| | | | | .XXX | ±.005 | | | | | SCALE 1=1 | | | | |
| | | | | .XXXX | ±.0005 | | REF FIG.2-51 | | | | | | | |
| | | | | | | FMF | | | | | | | | |
| NO. | REVISION | BY & DATE | CHK | ANG | ±1/2" | MAT'L. DECAL - 004014 | | | PREV | | | | | |
| THIS DRAWING IN DESIGN AND DETAIL IS OUR PROPERTY AND MUST NOT BE USED EXCEPT IN CONNECTION WITH OUR WORK ALL RIGHTS OF DESIGN AND INVENTION ARE RESERVED THIS IS AN ELECTRONICALLY GENERATED DOCUMENT - DO NOT SCALE THIS PRINT | | | RFP | | 04/12/02 | | CAD FILE | | 00501001ME | | SIZE | DRAWING NO. | | REV. |
| | | | DIST | | | | | | A | 005010-01ME | | | | |