

PRODUCT INFORMATION PACKET

marathon®
Motors

Model No: 184TTFW16079

Catalog No: E2158

XRI® General Purpose General Purpose Motor, 2 HP, 3 Ph, 60 Hz, 200 V, 1200 RPM, 184T Frame, TEFC



Regal and Marathon are trademarks of Regal Rexnord Corporation or one of its affiliated companies.
©2023 Regal Rexnord Corporation, All Rights Reserved. MC017097E

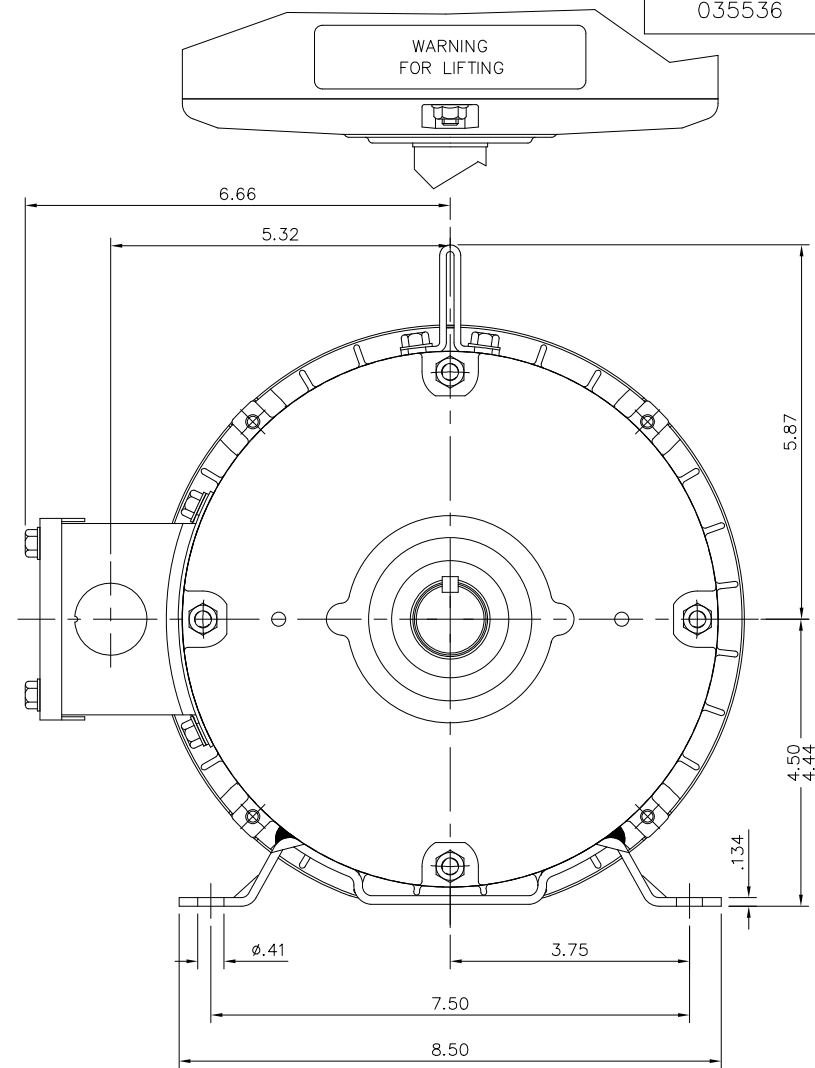
RegalRexnord


Nameplate Specifications

| | | | |
|------------------------|---------------|----------------------------|-----------------------------|
| Phase | 3 | Output HP | 2 Hp |
| Output KW | 1.5 kW | Voltage | 200 V |
| Speed | 1175 rpm | Service Factor | 1.15 |
| Frame | 184T | Enclosure | Totally Enclosed Fan Cooled |
| Thermal Protection | No Protection | Efficiency | 88.5 % |
| Ambient Temperature | 40 °C | Frequency | 60 Hz |
| Current | 7.4 A | Power Factor | 66.5 |
| Duty | Continuous | Insulation Class | F |
| Design Code | B | KVA Code | K |
| Drive End Bearing Size | 6206 | Opp Drive End Bearing Size | 6205 |
| UL | Recognized | CSA | Y |
| CE | Y | IP Code | 43 |
| Number of Speeds | 1 | | |

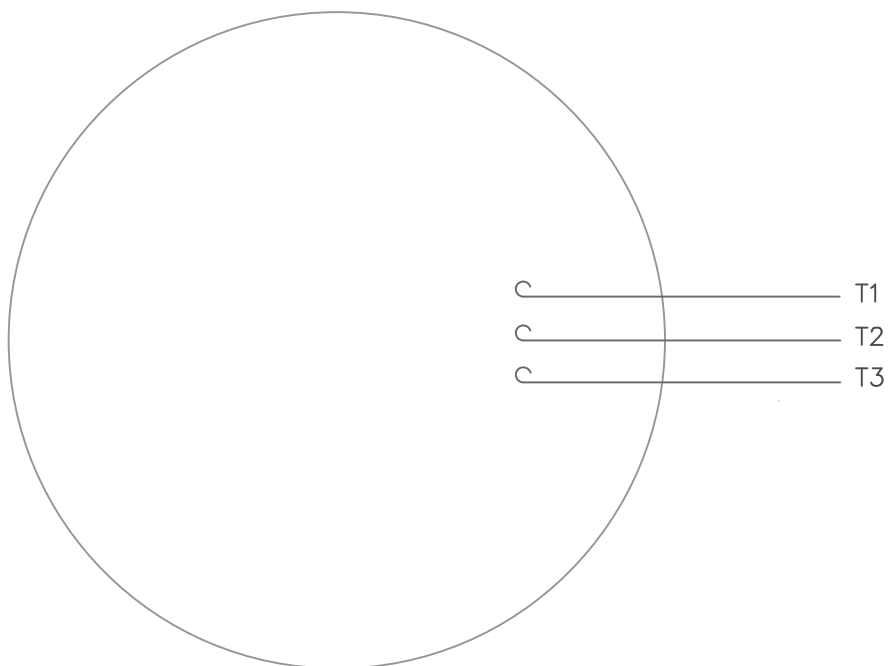
Technical Specifications

| | | | |
|-----------------------|------------------------------|-----------------------|------------------|
| Electrical Type | Squirrel Cage Inverter Rated | Starting Method | Line Or Inverter |
| Poles | 6 | Rotation | Reversible |
| Resistance Main | 5.4 Ohms | Mounting | Rigid Base |
| Motor Orientation | Horizontal | Drive End Bearing | Ball |
| Opp Drive End Bearing | Ball | Frame Material | Rolled Steel |
| Shaft Type | T | Overall Length | 14.97 in |
| Frame Length | 9.50 in | Shaft Diameter | 1.125 in |
| Shaft Extension | 2.81 in | Assembly/Box Mounting | F1/F2 Capable |
| Inverter Load | CONSTANT 10:1 | | |
| Connection Drawing | 005102.01ME | Outline Drawing | 035536-950 |

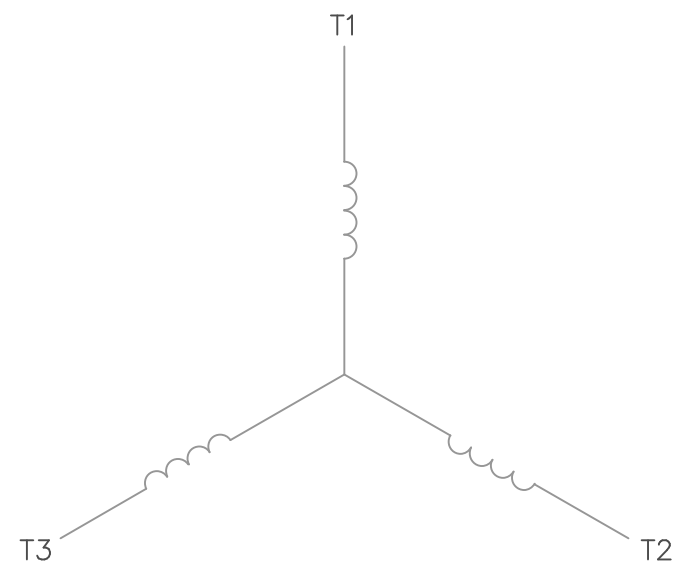


| | | | | | | | | | | | |
|---|--------------------------------------|--------------|----------|--------------------------------|--------|---|-------------------|--------|--------|--------------------|---------|
| | | | | TOLERANCES UNLESS SPECIFIED | |  | DRAWN VV 07/02/07 | | | | |
| | | | | DEC. | INCHES | | CHK SV 07/02/07 | | | | |
| 04 | Updated Nameplate location | JG 09/06/23 | TS .X | ±.1 | | | APPD VS 07/02/07 | | | | |
| 03 | ADDED FLINGER | PVR 02/10/15 | ST .XX | ±.03 | TITLE | OUTLINE- 180T FRAME | SCALE | 1=2 | | | |
| 02 | WHEN REQD NOTE ADDED FOR 'XRI' DECAL | GR 02/07/13 | AK .XXX | ±.005 | | TEFC- RIGID | REF | | | | |
| 01 | UPDATED FRAME LENGTH TABLE | PVR 08/31/12 | JD .XXXX | ±.0005 | MAT'L. | | FMF | | | | |
| NO. | REVISION | BY & DATE | CHK | ANG | ±1/2" | FINISH | PREV | | | | |
| THIS DRAWING IN DESIGN AND DETAIL IS OUR PROPERTY AND MUST NOT BE USED EXCEPT IN CONNECTION WITH OUR WORK. ALL RIGHTS OF DESIGN AND INVENTION ARE RESERVED. THIS IS AN ELECTRONICALLY GENERATED DOCUMENT - DO NOT SCALE THIS PRINT | | | | | | RFP | CAD FILE | 035536 | SIZE B | DRAWING NO. 035536 | REV. 04 |


VIEW FROM OUTSIDE OF MOTOR AT SWITCH END.



LINE LEADS

CONNECT LEADS AS FOLLOWS
FOR FOUR CONDUCTOR CORD ()

| CORD | L1 (RED) | L2 (WHITE) | L3 (BLACK) | (GREEN) |
|-------|-------------|---------------|---------------|---------|
| MOTOR | T1 | T2 | T3 | GROUND |

| | | | | | | | | | |
|--|----------|-----------|------|--------------------------------|---------------------|---|--|-------------|------|
| | | | | TOLERANCES UNLESS SPECIFIED | |  | DRAWN RDW 5/1/02 | | |
| | | | | DEC. | INCHES | | CHK | | |
| | | | | .X | ±.1 | | APPD | | |
| | | | | .XX | ±.01 | | TITLE EXTERNAL WIRING DIAGRAM TYPE "T" W/O PROTECTOR | SCALE 1=1 | |
| | | | | .XXX | ±.005 | | | REF | |
| | | | | .XXXX | ±.0005 | | | FMF | |
| NO. | REVISION | BY & DATE | CHK | ANG | ±1/2° | | FINISH | PREV | |
| THIS DRAWING IN DESIGN AND DETAIL IS OUR PROPERTY AND MUST NOT BE USED EXCEPT IN CONNECTION WITH OUR WORK ALL RIGHTS OF DESIGN AND INVENTION ARE RESERVED THIS IS AN ELECTRONICALLY GENERATED DOCUMENT – DO NOT SCALE THIS PRINT | | | RFP | 5/1/02 | CAD FILE 00510201ME | | SIZE | DRAWING NO. | REV. |
| | | | DIST | | | | A | 005102-01ME | |

CERTIFICATION DATA SHEET

Model#: 184TTFW16079 AA

WINDING#: T8638 FR 6

CONN. DIAGRAM: 005102.01ME

ASSEMBLY: F1/F2 CAPABLE

OUTLINE: 035536-950

TYPICAL MOTOR PERFORMANCE DATA

| HP | KW | SYNC. RPM | F.L. RPM | FRAME | ENCLOSURE | KVA CODE | DESIGN |
|----|------|-----------|----------|-------|-----------|----------|--------|
| 2 | 1.49 | 1200 | 1175 | 184T | TEFC | K | B |

| PH | Hz | VOLTS | FL AMPS | START TYPE | DUTY | INSL | S.F | AMB°C | ELEVATION |
|----|----|-------|---------|---------------------|----------------|------|----------|-------|-----------|
| 3 | 60 | 200 | 7.35 | LINE OR INVERTER | CONTINUOU S | F4 | 1.15/1.0 | 40 | 3300 |

| | | | | | |
|---------------------|-------------------|--------------------|----------|-------------------|--------------|
| FULL LOAD EFF: 88.5 | 3/4 LOAD EFF: 88 | 1/2 LOAD EFF: 87.1 | GTD. EFF | ELEC. TYPE | NO LOAD AMPS |
| FULL LOAD PF: 66.5 | 3/4 LOAD PF: 58.9 | 1/2 LOAD PF: 47.2 | 86.5 | SQ CAGE INV RATED | 4.5 |

| F.L. TORQUE | LOCKED ROTOR AMPS | L.R. TORQUE | B.D. TORQUE | F.L. RISE°C |
|-------------|-------------------|----------------|----------------|-------------|
| 9 LB-FT | 47.2 | 16.8 LB-FT 187 | 30.2 LB-FT 336 | 32 |

| SOUND PRESSURE @ 3 FT. | SOUND POWER | ROTOR WK^2 | MAX. WK^2 | SAFE STALL TIME | STARTS /HOUR | APPROX. MOTOR WGT |
|---------------------------|-------------|------------|-----------|-----------------|-----------------|----------------------|
| 55 dBA | 65 dBA | 0 LB-FT^2 | 0 LB-FT^2 | 15 SEC. | 2 | 0 LBS. |

*** SUPPLEMENTAL INFORMATION ***

| DE BRACKET TYPE | ODE BRACKET TYPE | MOUNT TYPE | ORIENTATION | SEVERE DUTY | HAZARDOUS LOCATION | DRIP COVER | SCREENS | PAINT |
|--------------------|---------------------|---------------|-------------|----------------|-----------------------|---------------|---------|------------------|
| STANDARD | STANDARD | RIGID | HORIZONTAL | FALSE | NONE | FALSE | NONE | BLUE (ENAMEL) |

| BEARINGS | | GREASE | SHAFT TYPE | SPECIAL DE | SPECIAL ODE | SHAFT MATERIAL | FRAME MATERIAL |
|----------|------|------------|------------|------------|-------------|--------------------------------|-------------------|
| DE | OPE | | | | | | |
| BALL | BALL | | | | | | |
| 6206 | 6205 | POLYREX EM | T | NONE | NONE | 1144 STRESSPROOF (C-223) | ROLLED STEEL |

| THERMO-PROTECTORS | | | | THERMISTORS | CONTROL | SPACE /n HEATERS |
|-------------------|------------|----------|----------|-------------|---------|------------------|
| THERMOSTATS | PROTECTORS | WDG RTDs | BRG RTDs | | | |
| NONE | NOT | NONE | NONE | NONE | FALSE | NONE VOLTS |

If Inverter equals NONE, contact factory for further information

| |
|--------------------------------|
| INVERTER TORQUE: CONSTANT 10:1 |
| INV. HP SPEED RANGE: NONE |
| ENCODER: NONE |
| NONE NONE |
| NONE NONE PPR |
| BRAKE: NONE NONE |
| NONE P/N NONE |
| NONE NONE |
| NONE FT-LB NONE V NONE Hz |

*
N
O
T
E
S
*

DATE: 06/28/2017 07:34:16 AM
FORM 3531 REV.3 02/07/99
** Subject to change without notice.

Data Sheet

Date: 15-06-2017

Customer:

Attention:

Submitted by: FAREEDA DUDEKULA



184TTFW16079

Submittal

Data @ 200 V

Motor Load Data

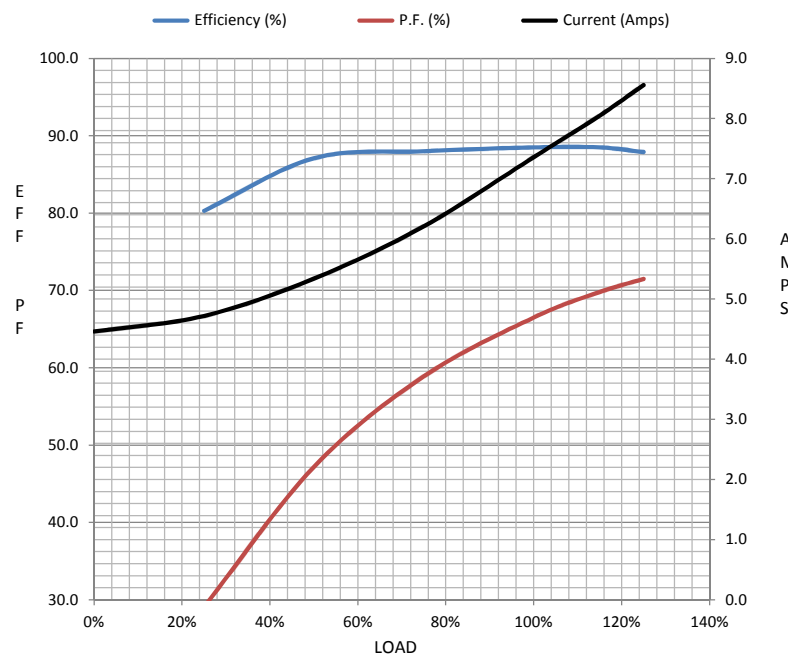
| Load | 0% | 25% | 50% | 75% | 100% | 115% | 125% | LR | |
|----------------|------|------|------|------|------|-------|------|------|--|
| Current (Amps) | 4.5 | 4.7 | 5.3 | 6.2 | 7.4 | 8.1 | 8.6 | 47.2 | |
| Torque (ft-lb) | 0.00 | 2.25 | 4.5 | 6.6 | 9.0 | 10.4 | 11.2 | 16.8 | |
| RPM | 1200 | 1194 | 1188 | 1182 | 1175 | 1,171 | 1168 | 0 | |
| Efficiency (%) | | 80.3 | 87.1 | 88.0 | 88.5 | 88.5 | 87.9 | | |
| P.F. (%) | 6.1 | 29.1 | 47.2 | 58.9 | 66.5 | 69.8 | 71.5 | 0.0 | |

Motor Speed Data

| | LR | Pull-Up | BD | Rated | Idle |
|----------------|------|---------|------|-------|------|
| Speed (RPM) | 0 | 21 | 1000 | 1175 | 1200 |
| Current (Amps) | 47.2 | 46.2 | 23.2 | 7.4 | 4.5 |
| Torque (ft-lb) | 16.8 | 16.5 | 30.2 | 9.0 | 0.00 |

Information Block

| | | | | |
|----------------------------|---------------|--------|--------|--------|
| HP | 2.0 | | | |
| Sync. RPM | 1200 | | | |
| Frame | 180 | | | |
| Enclosure | TEFC | | | |
| Construction | TFW | | | |
| Voltage | 200 V | | | |
| Frequency | 60 Hz | | | |
| Design | B | | | |
| LR Code letter | K | | | |
| Service Factor | 1.15 | | | |
| Temp Rise @ FL | 32 ° C | | | |
| Duty | CONT | | | |
| Ambient | 40 ° C | | | |
| Elevation | 1,000 feet | | | |
| Rotor/Shaft wk² | 0.00 Lb-Ft² | | | |
| Ref Wdg | T8638 FR | | | |
| Sound Pressure @ 1M | 55 dBA | | | |
| VFD Rating | CONSTANT 10:1 | | | |
| Outline Dwg | 035536-950 | | | |
| Conn. Diag | 005102.01ME | | | |
| Additional Specifications: | | | | |
| 0 | | | | |
| 365THFS8036 | | | | |
| EQUIV CKT (OHMS / PHASE) | | | | |
| R1 | R2 | X1 | X2 | Xm |
| 0.0000 | 0.0000 | 0.0000 | 0.0000 | 0.0000 |



Speed -Torque Curve

