

PRODUCT INFORMATION PACKET



Model No: 184TTFW16057
Catalog No: 184TTFW16057
5,1800,TEFC,184T,3/60/380

Regal and Marathon are trademarks of Regal Rexnord Corporation or one of its affiliated companies.
©2023 Regal Rexnord Corporation, All Rights Reserved. MC017097E



Nameplate Specifications

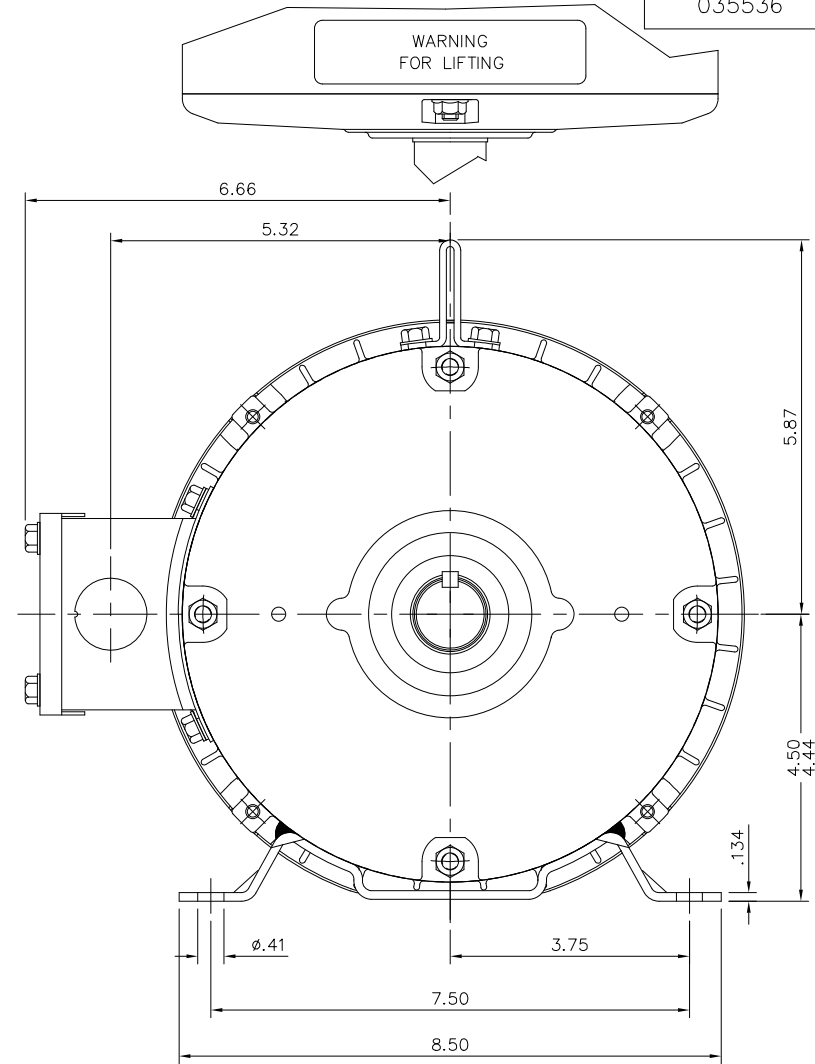
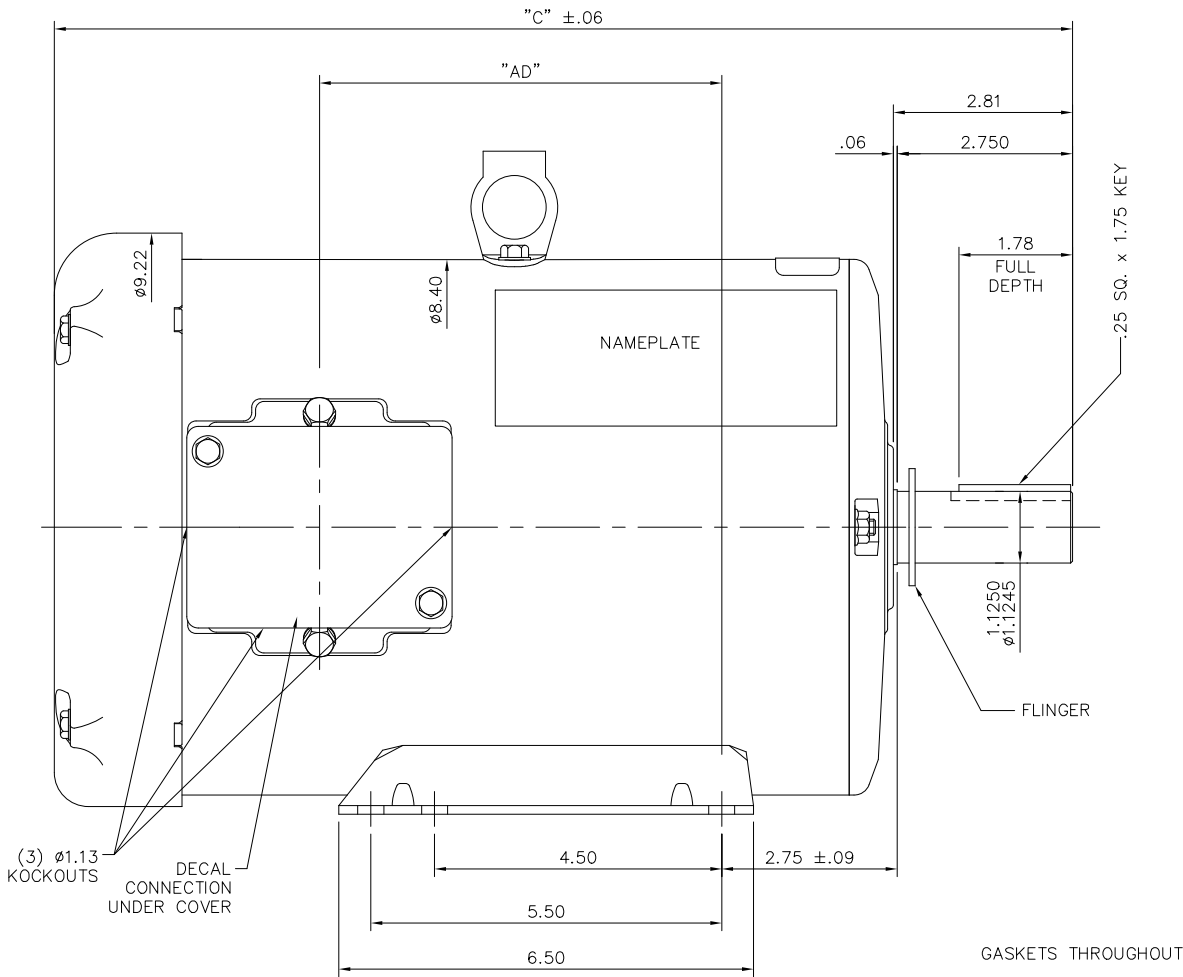
Phase	3	Output HP	5 Hp
Output KW	3.7 kW	Voltage	380 V
Speed	1760 rpm	Service Factor	1
Frame	184T	Enclosure	Totally Enclosed Fan Cooled
Thermal Protection	No Protection	Efficiency	89.5 %
Ambient Temperature	50 °C	Frequency	60 Hz
Current	7.6 A	Power Factor	83.1
Duty	Continuous	Insulation Class	F
Design Code	B	KVA Code	J
Drive End Bearing Size	6206	Opp Drive End Bearing Size	6205
UL	Recognized	CSA	Y
CE	Y	IP Code	43
Number of Speeds	1		

Technical Specifications

Electrical Type	Squirrel Cage Inverter Rated	Starting Method	Line Or Inverter
Poles	4	Rotation	Reversible
Resistance Main	2.68 Ohms	Mounting	Rigid Base
Motor Orientation	Horizontal	Drive End Bearing	Ball
Opp Drive End Bearing	Ball	Frame Material	Rolled Steel
Shaft Type	T	Assembly/Box Mounting	F1/F2 CAPABLE
Outline Drawing	035536-950	Connection Drawing	005102.01


This is an uncontrolled document once printed or downloaded and is subject to change without notice. Date Created:11/20/2023

035536



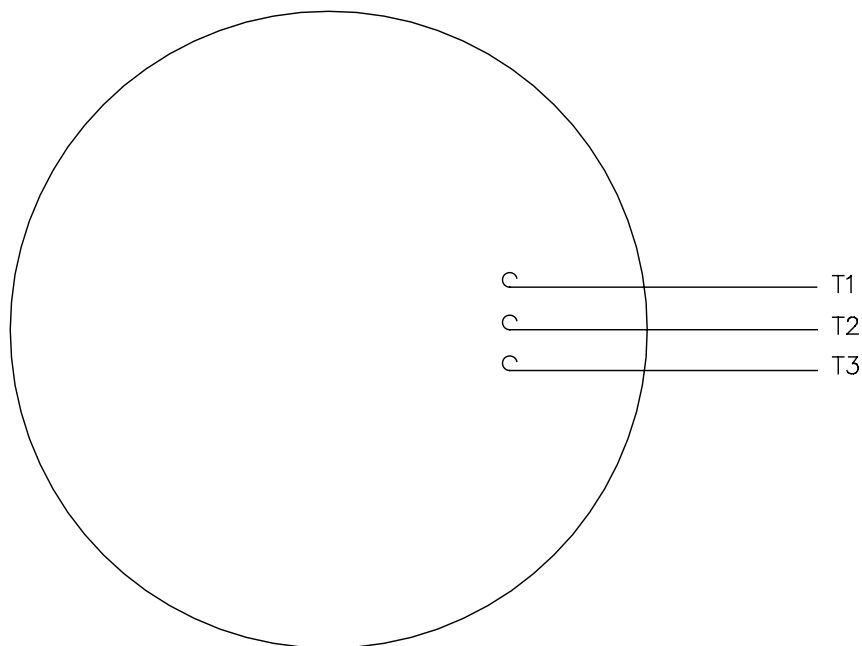
DASH NO.	"C"	"AD"
750	12.97	3.37
800	13.47	3.87
850	13.97	4.37
900	14.47	4.87
950	14.97	5.37
1000	15.47	5.87
1050	15.97	6.37
1100	16.47	6.87
1150	16.97	7.37

ORACLE REV
003

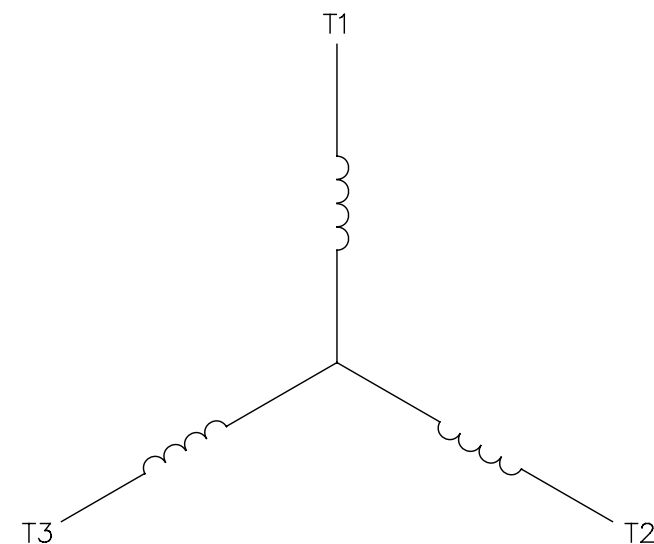
				TOLERANCES UNLESS SPECIFIED			DRAWN VV 07/02/07			
				DEC.	INCHES		CHK SV 07/02/07			
04	Updated Nameplate location	JG 09/06/23	TS	.X	±.1	TITLE OUTLINE- 180T FRAME TEFC- RIGID	APPD VS 07/02/07			
03	ADDED FLINGER	PVR 02/10/15	ST	.XX	±.03		SCALE 1=2			
02	WHEN REQD NOTE ADDED FOR 'XRI' DECAL	GR 02/07/13	AK	.XXX	±.005	MAT'L	REF			
01	UPDATED FRAME LENGTH TABLE	PVR 08/31/12	JD	.XXXX	±.0005		FMF			
NO.	REVISION	BY & DATE	CHK	ANG	±1/2"	FINISH	PREV			
THIS DRAWING IN DESIGN AND DETAIL IS OUR PROPERTY AND MUST NOT BE USED EXCEPT IN CONNECTION WITH OUR WORK. ALL RIGHTS OF DESIGN AND INVENTION ARE RESERVED.						RFP	CAD FILE 035536	SIZE B	DRAWING NO. 035536	REV 0
THIS IS AN ELECTRONICALLY GENERATED DOCUMENT - DO NOT SCALE THIS PRINT						DIST				

005102-01


VIEW FROM OUTSIDE OF MOTOR AT SWITCH END.



LINE LEADS

CONNECT LEADS AS FOLLOWS
FOR FOUR CONDUCTOR CORD ()

CORD	L1 (RED)	L2 (WHITE)	L3 (BLACK)	(GREEN)
MOTOR	T1	T2	T3	GROUND

				TOLERANCES UNLESS SPECIFIED		 Regal Beloit America, Inc.			DRAWN		JRW 9/11/75					
				DEC.	INCHES				CHK							
				.X	±.1				APPD		JCW 9/11/75					
08	UPDATED TO REGAL LOGO	SAJ 06/26/15	AJY	.XX	±.01	TITLE			EXTERNAL WIRING DIAGRAM TYPE "T" W/O PROTECTOR			SCALE		1=1		
07	UPDATED TO CURRENT STANDARDS	DBT 5/30/97		.XXX	±.005							REF		W-T6343-6		
06	REDRAWN ON CAD; ADDED DECAL NUMBER	SAW 1/24/95		.XXXX	±.0005	MAT'L.			DECAL - 004169			FMF		6T17FB7		
NO.	REVISION	BY & DATE	CHK	ANG	±1/2"	FINISH						PREV				
THIS DRAWING IN DESIGN AND DETAIL IS OUR PROPERTY AND MUST NOT BE USED EXCEPT IN CONNECTION WITH OUR WORK ALL RIGHTS OF DESIGN AND INVENTION ARE RESERVED THIS IS AN ELECTRONICALLY GENERATED DOCUMENT - DO NOT SCALE THIS PRINT				RFP		5/1/02		CAD FILE		00510201		SIZE	DRAWING NO.		REV.	
				DIST		BRF-NLV				A	005102-01		08			

 **Regal Beloit America, Inc.**