

# PRODUCT INFORMATION PACKET

**marathon®**  
Motors

Model No: 184TTFS6844

Catalog No: E473

5 HP Severe Duty Motor, 3 phase, 1800 RPM, 230/460 V, 184T Frame, TEFC

Severe Duty Motors



Regal and Marathon are trademarks of Regal Rexnord Corporation or one of its affiliated companies.

©2022 Regal Rexnord Corporation, All Rights Reserved. MC017097E

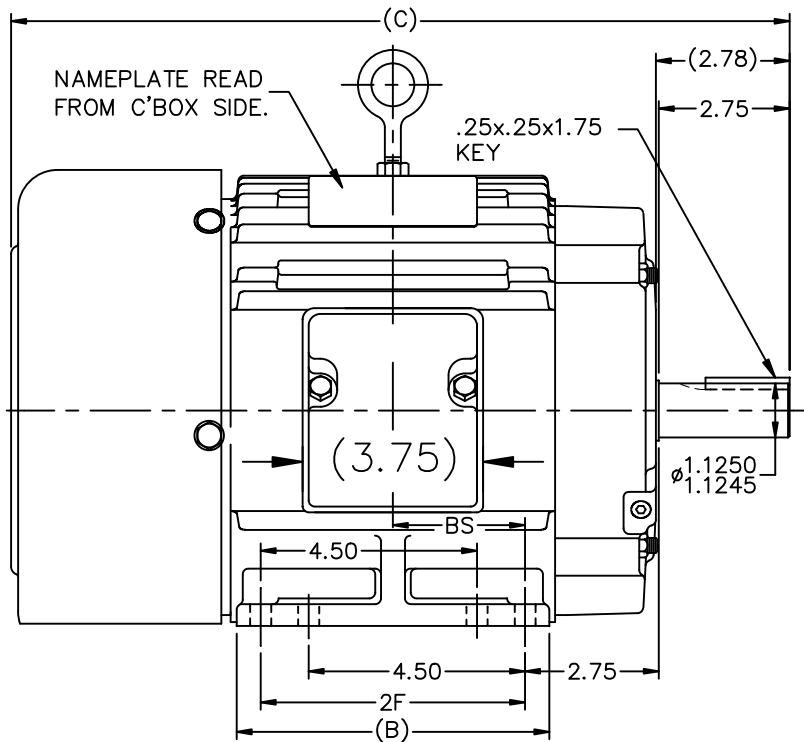
**RegalRexnord**

**Nameplate Specifications**

Output HP	5 Hp	Output KW	3.7 kW
Frequency	60 Hz	Voltage	230/460 V
Current	12.4/6.2 A	Speed	1755 rpm
Service Factor	1.15	Phase	3
Efficiency	90.2 %	Power Factor	83.5
Duty	Continuous	Insulation Class	F
Design Code	B	KVA Code	J
Frame	184T	Enclosure	Totally Enclosed Fan Cooled
Thermal Protection	No	Ambient Temperature	40 °C
Drive End Bearing Size	6206	Opp Drive End Bearing Size	6205
UL	Recognized	CSA	Y
CE	Y	IP Code	54
Hazardous Location	DIVISION 2 T2B	Number of Speeds	1

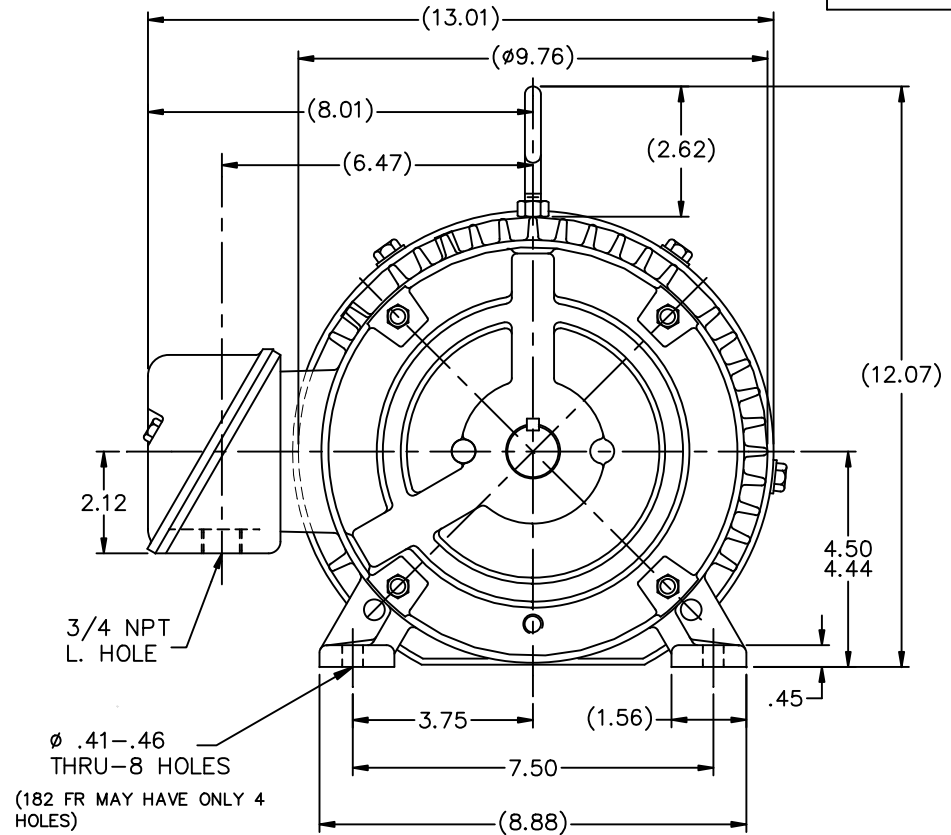
**Technical Specifications**

Electrical Type	Squirrel Cage Inverter Rated	Starting Method	Line Or Inverter
Poles	4	Rotation	Reversible
Resistance Main	2.62 Ohms	Mounting	Rigid Base
Motor Orientation	Horizontal	Drive End Bearing	Ball
Opp Drive End Bearing	Ball	Frame Material	Cast Iron
Shaft Type	T	Overall Length	16.19 in
Frame Length	6.75 in	Shaft Diameter	1.125 in
Shaft Extension	2.78 in	Assembly/Box Mounting	F1/F2 CAPABLE
Inverter Load	CONSTANT 20:1		
Outline Drawing	A-SS63661-675	Connection Drawing	A-EE7308

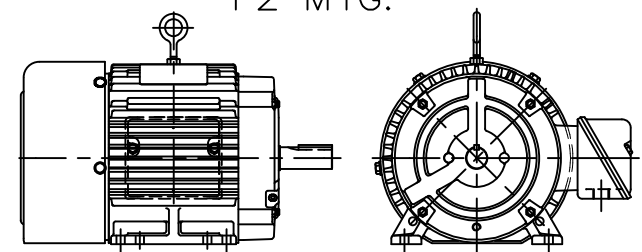


BOX CAN BE MOUNTED ON OPPOSITE SIDE BY REMOVING BRACKETS & TURNING FRAME 180°.

BOX CAN BE ROTATED IN 90° STEPS.



F2 MTG.



DASH	FR.	C	B	2F	BS
575	182T	15.19	5.50	4.50	2.25
675	184T	16.19	6.50	5.50	2.75
800	184T	17.44	7.75	5.50	3.38

NO.	REVISION	BY & DATE	CHK	ANG	±7'30"
13	CHG COND. BOX DIM, WAS 5.00 NOW 3.75 ECN 18821	TF 01/31/2011	EMH	TOLERANCES UNLESS SPECIFIED	
12	REDRAWN IN AUTOCAD	TAT 06-29-2004	ML	DEC.	INCHES
11	UPDATED MOUNTING HOLE NOTE CN 26000-581	DRS 01-02-2002	ML	.X	±.1
10	ADDED 182 FR. MAY HAV... NOTE CN 26000-581	MRB 07-02-1998		.XX	±.03
9	ADDED 4 MOUNTING HOLES	MJD 06-09-1998		.XXX	±.005
8	ADDED NEMA "O" DIMENSION	MRB 09-12-1996		.XXXX	±.0005

		DRAWN RM 01-08-1993	
		CHK ML 01-13-1993	
TITLE OUTLINE		APPD GK 01-13-1993	
180 FR. - BB - TS - TEFC		SCALE 1=4	
MAT'L.		REF	
FINISH		FMF	
		PREV	

THIS DRAWING IN DESIGN AND DETAIL IS OUR PROPERTY AND MUST NOT BE USED EXCEPT IN CONNECTION WITH OUR WORK ALL RIGHTS OF DESIGN AND INVENTION ARE RESERVED  
THIS IS AN ELECTRONICALLY GENERATED DOCUMENT - DO NOT SCALE THIS PRINT

RFP  
DIST LB

CAD FILE ss63661

SIZE	DRAWING NO.	PAGE	OF	REV.
A	SS63661			13



				TOLERANCES UNLESS SPECIFIED		 <b>Regal Beloit America, Inc.</b>	DRAWN RM 11/20/1990				
5	CHG TO REGAL LOGO	SL 09/10/2015	AB	DEC.	INCHES		CHK ML 11/21/1990				
4	REVISED IEC NOTATIONS	MSG 11/15/2011	CMN	.X	±.1		APPD SAS 04/24/2003				
3	ADDED IEC NOTATIONS... (U1), (V1) ETC. MU95194	MSG 5/10/2010	MJS	.XX	±.02		SCALE 1=1				
2	ADDED THE OPTIONAL CORD CONNECTION MU46318	RDH 04/24/2003	DRS	.XXX	±.005	TITLE CONNECTION DIAGRAM 3ø – DUAL VOLTAGE MOTOR	REF				
1	REDRAWN	RM 11/20/1990		.XXXX	±.0005		FMF				
NO.	REVISION	BY & DATE	CHK	ANG	±7"30"	FINISH	PREV				
THIS DRAWING IN DESIGN AND DETAIL IS OUR PROPERTY AND MUST NOT BE USED EXCEPT IN CONNECTION WITH OUR WORK ALL RIGHTS OF DESIGN AND INVENTION ARE RESERVED THIS IS AN ELECTRONICALLY GENERATED DOCUMENT – DO NOT SCALE THIS PRINT			RFP		CAD FILE ee7308		SIZE	DRAWING NO.	PAGE	OF	REV.
			DIST WP				A	EE7308			5

## CERTIFICATION DATA SHEET

Model#: 184TTFS6844 BP  
 CONN. DIAGRAM: A-EE7308  
 OUTLINE: A-SS63661-675

WINDING#: K1844215 NONE 1  
 ASSEMBLY: F1/F2 CAPABLE

## TYPICAL MOTOR PERFORMANCE DATA

HP	KW	SYNC. RPM	F.L. RPM	FRAME	ENCLOSURE	KVA CODE	DESIGN
5	3.7	1800	1755	184T	TEFC	J	B

PH	Hz	VOLTS	FL AMPS	START TYPE	DUTY	INSL	S.F	AMB°C	ELEVATION
3	60	230/460	12.4/6.2	LINE OR INVERTER	CONTINUOU S	F3	1.15	40	3300

FULL LOAD EFF: 90.2	3/4 LOAD EFF: 90.2	1/2 LOAD EFF: 90.2	GTD. EFF	ELEC. TYPE	NO LOAD AMPS
FULL LOAD PF: 83.5	3/4 LOAD PF: 78.5	1/2 LOAD PF: 70	89.5	SQ CAGE INV RATED	5.6 / 2.8

F.L. TORQUE	LOCKED ROTOR AMPS	L.R. TORQUE	B.D. TORQUE	F.L. RISE°C
15 LB-FT	92 / 46	34.5 LB-FT 230	45 LB-FT 300	50

SOUND PRESSURE @ 3 FT.	SOUND POWER	ROTOR WK^2	MAX. WK^2	SAFE STALL TIME	STARTS /HOUR	APPROX. MOTOR WGT
62 dBA	72 dBA	0.5 LB-FT^2	50 LB-FT^2	25 SEC.	2	130 LBS.

## \*\*\* SUPPLEMENTAL INFORMATION \*\*\*

DE BRACKET TYPE	ODE BRACKET TYPE	MOUNT TYPE	ORIENTATION	SEVERE DUTY	HAZARDOUS LOCATION	DRIP COVER	SCREENS	PAINT
STANDARD	STANDARD	RIGID	HORIZONTAL	PREMIUM SEVERE DUTY	DIVISION 2 T2B	FALSE	NONE	BLUE (EPOXY)

BEARINGS		GREASE	SHAFT TYPE	SPECIAL DE	SPECIAL ODE	SHAFT MATERIAL	FRAME MATERIAL
DE	OPE						
BALL	BALL						
6206	6205	POLYREX EM	T	NONE	NONE	1144 STRESSPROOF (C-223)	CAST IRON

THERMO-PROTECTORS				THERMISTORS	CONTROL	SPACE /n HEATERS
THERMOSTATS	PROTECTORS	WDG RTDs	BRG RTDs			
NONE	NOT	NONE	NONE	NONE	FALSE	NONE VOLTS

If Inverter equals NONE, contact factory for further information

\*  
N  
O  
T  
E  
S  
\*

INVERTER TORQUE: CONSTANT 20:1 INV. HP SPEED RANGE: 1.5 X BASE SPEED		
ENCODER: NONE NONE NONE NONE NONE PPR		
BRAKE: NONE NONE NONE P/N NONE NONE NONE - FT-LB NONE V NONE Hz		

DATE: 06/21/2017 11:37:15 AM  
 FORM 3531 REV.3 02/07/99  
 \*\* Subject to change without notice.

## Data Sheet

Date: 6/29/2017

Customer: \_\_\_\_\_

Attention: \_\_\_\_\_

Submitted by: FAREEDA DUDEKULA



184TTF6844

Submittal

Data @ 460 V

## Motor Load Data

Load	0%	25%	50%	75%	100%	115%	125%	LR	
Current (Amps)	2.80	3.0	3.8	5.0	6.2	7.2	7.8	46.0	
Torque (ft-lb)	0.00	3.7	7.4	11.5	15.0	17.5	19.0	34.5	
RPM	1800	1790	1780	1765	1755	1,745	1740	0	
Efficiency (%)		85.5	90.2	90.2	90.2	89.5	88.5		
P.F. (%)	6.5	47.0	70.0	78.5	83.5	84.5	86.0	48.0	

## Motor Speed Data

	LR	Pull-Up	BD	Rated	Idle					
Speed (RPM)	0	900	1600	1755	1800					
Current (Amps)	46.0	41.0	25.0	6.2	2.80					
Torque (ft-lb)	34.5	31.0	45.0	15.0	0.00					
<div><div>— Efficiency (%) — P.F. (%) — Current (Amps)</div><div>EFFICIENCY (%)</div><div>P.F. (%)</div><div>CURRENT (AMPS)</div><div>LOAD</div></div>						Information Block				
						HP		5.0		
						Sync. RPM		1800		
						Frame		184		
						Enclosure		TEFC		
						Construction		TFN		
						Voltage		230/460 V		
						Frequency		60 Hz		
						Design		B		
						LR Code letter		J		
						Service Factor		1.15		
						Temp Rise @ FL		50 °C		
						Duty		CONT		
						Ambient		40 °C		
						Elevation		1,000 feet		
						Rotor/Shaft wk²		0.50 Lb-Ft²		
						Ref Wdg		K1844215 NONE		
Sound Pressure @ 1M		62 dBA								
VFD Rating		CONSTANT 20:1								
Outline Dwg		A-SS63661-675								
Conn. Diag		A-EE7308								
Additional Specifications:										
0										
0										
EQUIV CKT (OHMS / PHASE)										
R1		R2		X1		X2		Xm		
1.5080		1.1280		3.6910		5.6930		104.3280		

## Speed -Torque Curve

