

# PRODUCT INFORMATION PACKET



Model No: 184TTFS6030

Catalog No: E304

5 HP General Purpose Motor, 3 phase, 1800 RPM, 575 V, 184T Frame, TEFC  
General Purpose Motors

Regal and Marathon are trademarks of Regal Rexnord Corporation or one of its affiliated companies.  
©2021 Regal Rexnord Corporation, All Rights Reserved. MC017097E



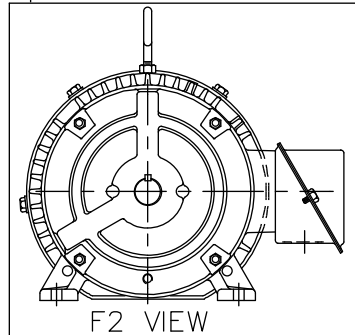
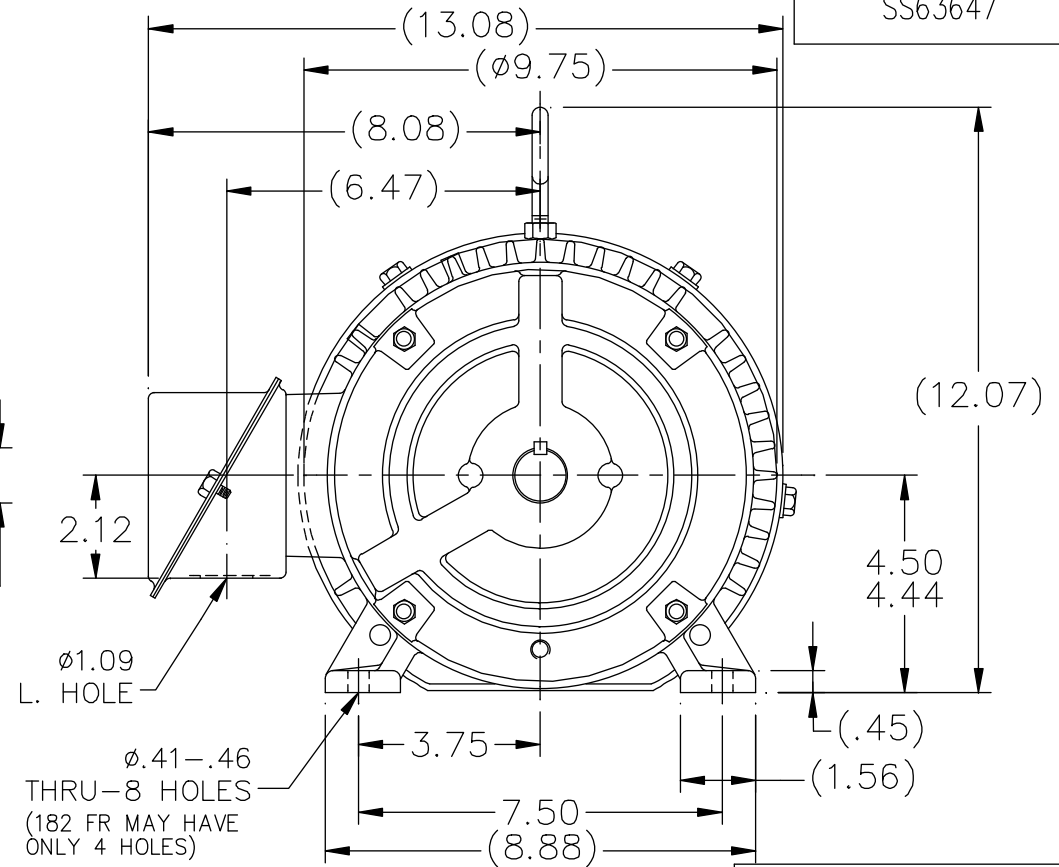
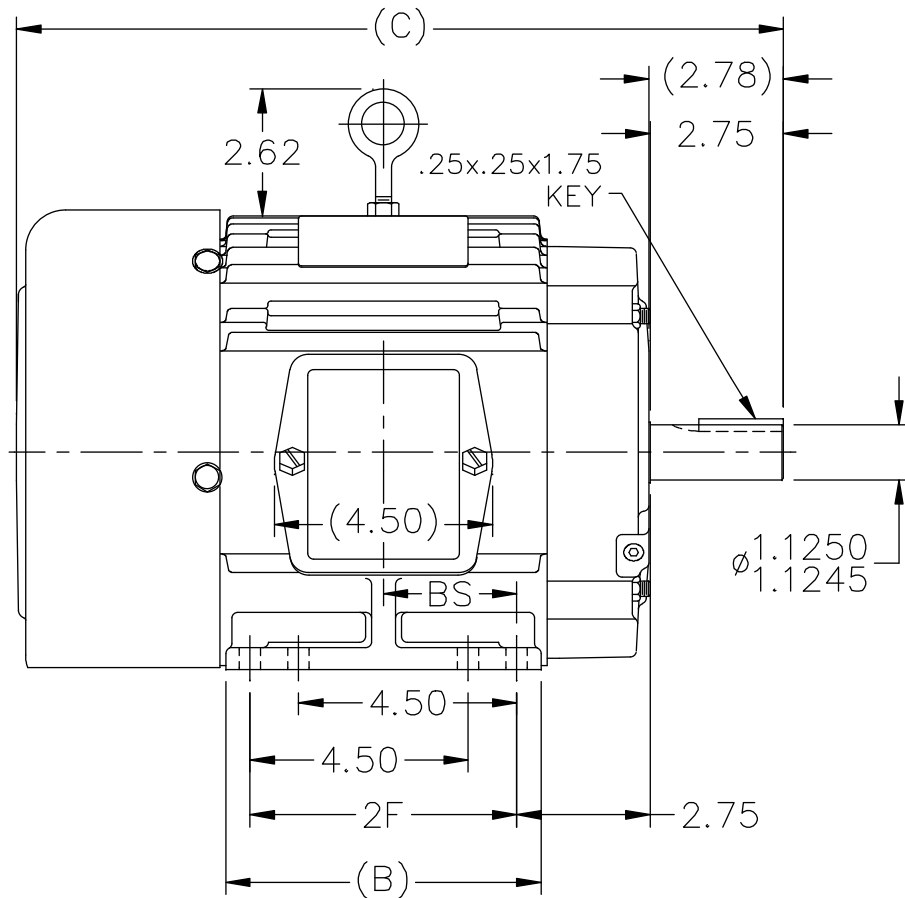
**Nameplate Specifications**

|                        |            |                            |                             |
|------------------------|------------|----------------------------|-----------------------------|
| Output HP              | 5 Hp       | Output KW                  | 3.7 kW                      |
| Frequency              | 60 Hz      | Voltage                    | 575 V                       |
| Current                | 5.0 A      | Speed                      | 1755 rpm                    |
| Service Factor         | 1.15       | Phase                      | 3                           |
| Efficiency             | 90.2 %     | Power Factor               | 83.5                        |
| Duty                   | Continuous | Insulation Class           | F                           |
| Design Code            | B          | KVA Code                   | J                           |
| Frame                  | 184T       | Enclosure                  | Totally Enclosed Fan Cooled |
| Thermal Protection     | No         | Ambient Temperature        | 40 °C                       |
| Drive End Bearing Size | 6206       | Opp Drive End Bearing Size | 6205                        |
| UL                     | Recognized | CSA                        | Y                           |
| CE                     | Y          | IP Code                    | 43                          |
| Number of Speeds       | 1          |                            |                             |

**Technical Specifications**

|                       |                             |                       |                 |
|-----------------------|-----------------------------|-----------------------|-----------------|
| Electrical Type       | Squirrel Cage Induction Run | Starting Method       | Across The Line |
| Poles                 | 4                           | Rotation              | Reversible      |
| Resistance Main       | 2.62 Ohms                   | Mounting              | Rigid Base      |
| Motor Orientation     | Horizontal                  | Drive End Bearing     | Ball            |
| Opp Drive End Bearing | Ball                        | Frame Material        | Cast Iron       |
| Shaft Type            | T                           | Overall Length        | 15.81 in        |
| Frame Length          | 6.75 in                     | Shaft Diameter        | 1.125 in        |
| Shaft Extension       | 2.78 in                     | Assembly/Box Mounting | F1/F2 CAPABLE   |
| Connection Drawing    | A-EE7300                    | Outline Drawing       | A-SS63647-675   |

This is an uncontrolled document once printed or downloaded and is subject to change without notice. Date Created:10/12/2021



#### NOTES:

1. CONDUIT BOX CAN BE ROTATED IN 90° STEPS.
2. CONDUIT BOX CAN BE MOUNTED ON OPPOSITE SIDE BY REMOVING BRACKETS AND TURNING FRAME 180°
3. NAMEPLATE TO BE READ FROM CONDUIT BOX SIDE OF MOTOR

| DASH | FR.    | C     | B    | 2F   | BS   | MOUNTING |
|------|--------|-------|------|------|------|----------|
| 575  | 182T   | 14.81 | 5.50 | 4.50 | 2.25 | F1 OR F2 |
| 675  | 182/4T | 15.81 | 6.50 | 5.50 | 2.75 | F1 OR F2 |
| 800  | 182/4T | 17.06 | 7.75 | 5.50 | 3.38 | F1 ONLY  |

| NO. | REVISION                                 | BY & DATE      | CHK   | ANG    | ±7'30" |
|-----|--|----------------|-------|--------|--------|
| 11  | ADDED F2 VIEW                            | HLB            |       |        |        |
| 10  | REVISED DASH 575 WAS F1 ONLY CN 29200-90 | CAV 01-31-2000 | .X    | ±.1    |        |
| 9   | ADDED 4 EXTRA FOOT HOLES                 | MRB 07-02-1998 | .XX   | ±.03   |        |
| 8   | REVISED SHAFT HEIGHT CN 16763            | BRH 03-18-1996 | .XXX  | ±.005  |        |
| 7   | REDRAWN ON CADD                          | SMC 04-20-1993 | .XXXX | ±.0005 |        |

TOLERANCES UNLESS SPECIFIED

| DEC.  | INCHES |
|-------|--------|
| .X    | ±.1    |
| .XX   | ±.03   |
| .XXX  | ±.005  |
| .XXXX | ±.0005 |
| ANG   | ±7'30" |



TITLE OUTLINE  
180T FR. - BB - TS - TEFC

MAT'L.

FINISH

|       |                |
|-------|----------------|
| DRAWN | SMC 04-07-1993 |
| CHK   | ML 04-12-1993  |
| APPD  | GK 04-19-1993  |
| SCALE | 1=4            |
| REF   |                |
| FMF   |                |
| PREV  |                |

THIS DRAWING IN DESIGN AND DETAIL IS OUR PROPERTY AND MUST NOT BE USED EXCEPT IN CONNECTION WITH OUR WORK ALL RIGHTS OF DESIGN AND INVENTION ARE RESERVED THIS IS AN ELECTRONICALLY GENERATED DOCUMENT - DO NOT SCALE THIS PRINT

RFP  
DIST LB

CAD FILE ss63647

| SIZE | DRAWING NO. | PAGE | OF | REV. |
|------|-------------|------|----|------|
| A    | SS63647     |      |    | 11   |

# THREE PHASE - SINGLE VOLTAGE MOTOR - CONDUIT BOX @ 'A'

TO REVERSE ROTATION:  
INTERCHANGE ANY TWO  
LINE LEAD CONNECTIONS.

## TERMINAL BLOCK WHEN SPECIFIED



### IF MOTOR HAS 6 LEADS



A-9806 DECAL

### OPTIONAL CORD CONNECTION



## VIEW OF TERMINAL END

|   |                    |                    |
|---|--------------------|--------------------|
| DRAWING REVISION<br>AB  | REVISION BY<br>JJB | DATE<br>06-27-2017 |
| ECO<br>ECO-0125361  | APPROVED BY<br>TB  | DATE<br>06-27-2017 |
| ECO DESCRIPTION<br>UPDATED TO CURRENT STANDARDS   |                    |                    |
| <small>COPYRIGHT REGAL BELOIT AMERICA, INC. ALL RIGHTS RESERVED.<br/>         PROPRIETARY AND CONFIDENTIAL INFORMATION - THIS DOCUMENT IS THE PROPERTY OF<br/>         REGAL BELOIT AMERICA, INC. ("OWNER") AND CONTAINS OWNER'S PROPRIETARY<br/>         INFORMATION. ANY PERSON, CORPORATION OR OTHER FIRM RECEIVING IT IS DEEMED,<br/>         BY RECEIVING IT, TO AGREE THAT IT, AND/OR ANY PART OF IT, SHALL NOT BE DISCLOSED<br/>         TO ANY PERSON, CORPORATION OR OTHER ENTITY, DUPLICATED, AND/OR USED, EXCEPT<br/>         AS EXPRESSLY APPROVED IN WRITING IN ADVANCE BY OWNER. THIS DOCUMENT SHALL<br/>         BE RETURNED TO OWNER UPON REQUEST. IT MAY BE SUBJECT TO CERTAIN<br/>         RESTRICTIONS UNDER APPLICABLE EXPORT CONTROL LAWS AND REGULATIONS.</small> |                    |                    |

|                           |
|---------------------------|
| DRAWN BY<br>DA            |
| DATE<br>03-26-1993        |
| APPROVED BY<br>TB         |
| DATE<br>03-26-1993        |
| REFERENCE                 |
| THIRD ANGLE<br>PROJECTION |



Regal Beloit America, Inc.

DESCRIPTION  
**CONNECTION DIAGRAM**  
EXTERNAL - SINGLE VOLTAGE - 3Ø MOTOR

MATERIAL PROCESS/FINISH

|           |                          |                 |
|-----------|--------------------------|-----------------|
| SIZE<br>A | DRAWING NUMBER<br>EE7300 | SHEET<br>1 OF 1 |
|-----------|--------------------------|-----------------|