

PRODUCT INFORMATION PACKET



Model No: 184TTFR9341

Catalog No: M879

5 HP Vertical Pump Motor, 3 phase, 1800 RPM, 230/460 V, 184HPV Frame, TEFC
Vertical Pump Motors

Regal and Marathon are trademarks of Regal Rexnord Corporation or one of its affiliated companies.
©2021 Regal Rexnord Corporation, All Rights Reserved. MC017097E



Nameplate Specifications

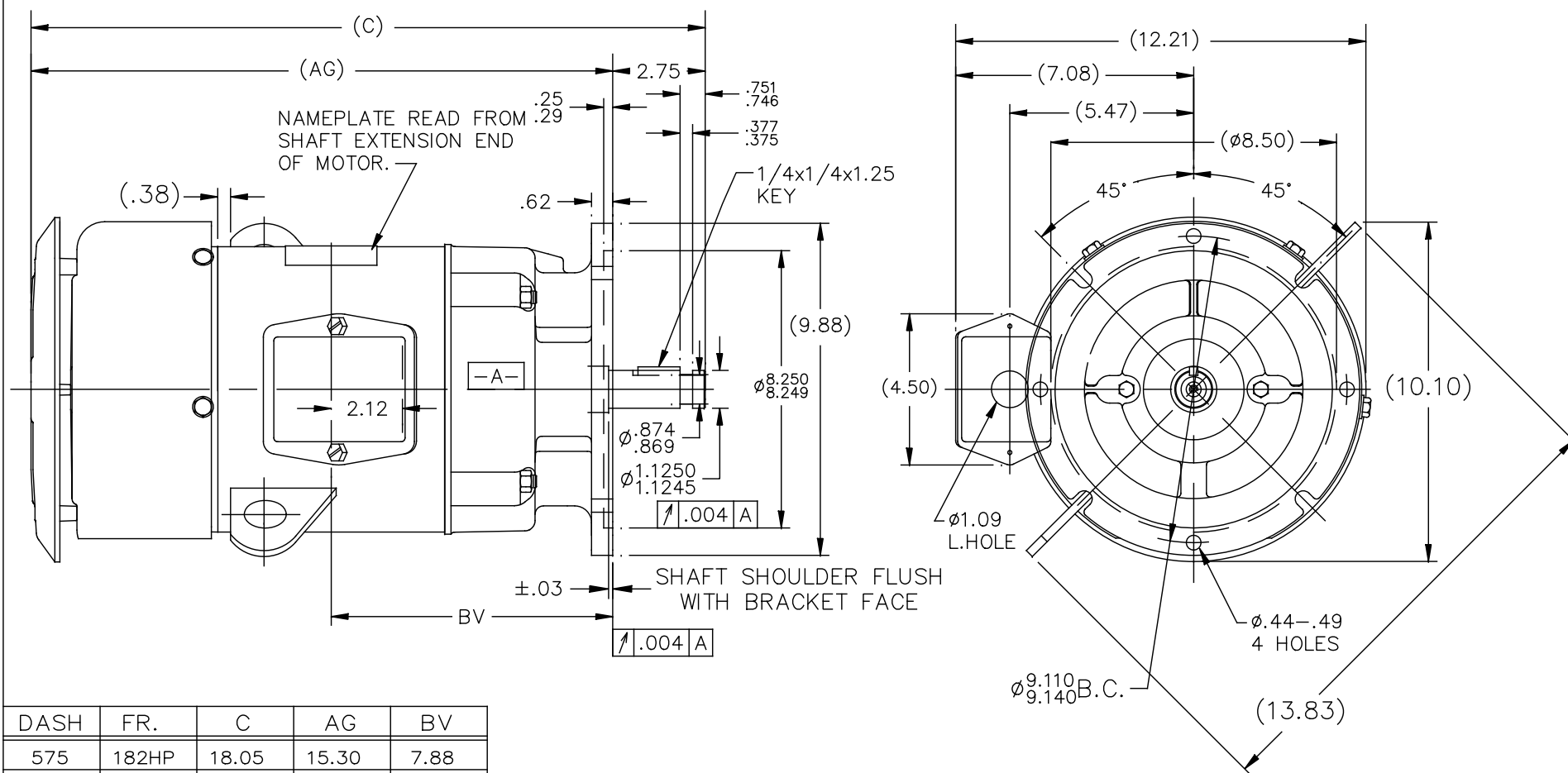
Output HP	5 Hp	Output KW	3.7 kW
Frequency	60 Hz	Voltage	230/460 V
Current	13.2/6.6 A	Speed	1730 rpm
Service Factor	1.15	Phase	3
Efficiency	84 %	Power Factor	84.1
Duty	Continuous	Insulation Class	F
Design Code	B	KVA Code	J
Frame	184HPV	Enclosure	Totally Enclosed Fan Cooled
Thermal Protection	No	Ambient Temperature	40 °C
Drive End Bearing Size	6207	Opp Drive End Bearing Size	6205
UL	Recognized	CSA	Y
CE	Y	IP Code	43
Number of Speeds	1		

Technical Specifications


Electrical Type	Squirrel Cage Induction Run	Starting Method	Across The Line
Poles	4	Rotation	Reversible
Resistance Main	3.56 Ohms	Mounting	Round
Motor Orientation	Shaft Down	Drive End Bearing	Ball
Opp Drive End Bearing	Ball	Frame Material	Rolled Steel
Shaft Type	HP	Overall Length	20.05 in
Frame Length	7.75 in	Shaft Diameter	1.125 in
Shaft Extension	2.75 in	Assembly/Box Mounting	F1/F2 CAPABLE
Connection Drawing	A-EE7308	Outline Drawing	A-SS69314-775

This is an uncontrolled document once printed or downloaded and is subject to change without notice. Date Created:10/06/2021

SS69314



DASH	FR.	C	AG	BV
575	182HP	18.05	15.30	7.88
675	182/4	19.05	16.30	8.38
775	182/4	20.05	17.30	8.88
825	182/4	20.55	17.80	9.12
925	182/4	21.55	18.80	9.62

				TOLERANCES UNLESS SPECIFIED		 Regal ™ Regal Beloit America, Inc.	DRAWN TJB 10-03-2002		
5	ADDED ITEM 925	KIR 03/10/16	ST	DEC.	INCHES		CHK ML 10-03-2002		
4	ADDED ±.03 TOL. SHAFT SHOULDER	KS 1-3-2012	TB	.X	±.1		APPD PH 10-04-2002		
3	REMOVED "O" DIM. AT NOTE FOR SHAFT SHOULDER	RJW 04-20-2006	ML	.XX	±.03	TITLE OUTLINE 180HP FR. – BB – TS – TEFC – 'P' BASE	SCALE 1=4.5		
2	ADD DASH 825 LINE	RWR 02-06-2004	PH	.XXX	±.005		REF		
1	NEW DRAWING MU43594	TJB 10-04-2002	PH	.XXXX	±.0005		FMF		
NO.	REVISION	BY & DATE	CHK	ANG	±7°30"	FINISH	PREV		
THIS DRAWING IN DESIGN AND DETAIL IS OUR PROPERTY AND MUST NOT BE USED EXCEPT IN CONNECTION WITH OUR WORK ALL RIGHTS OF DESIGN AND INVENTION ARE RESERVED THIS IS AN ELECTRONICALLY GENERATED DOCUMENT – DO NOT SCALE THIS PRINT			RFP			CAD FILE ss69314	SIZE A	DRAWING NO. PAGE OF SS69314	REV. 5
			DIST LB						



NO.	REVISION	BY & DATE	CHK	ANG	TOLERANCES UNLESS SPECIFIED	FINISH	DRAWING NO.	PAGE	OF	REV.
5	CHG TO REGAL LOGO	SL 09/10/2015	AB	DEC.	INCHES					
4	REVISED IEC NOTATIONS	MSG 11/15/2011	CMN	.X	±.1					
3	ADDED IEC NOTATIONS... (U1), (V1) ETC. MU95194	MSG 5/10/2010	MJS	.XX	±.02					
2	ADDED THE OPTIONAL CORD CONNECTION MU46318	RDH 04/24/2003	DRS	.XXX	±.005					
1	REDRAWN	RM 11/20/1990		.XXXX	±.0005					
					±7'30"					
THIS DRAWING IN DESIGN AND DETAIL IS OUR PROPERTY AND MUST NOT BE USED EXCEPT IN CONNECTION WITH OUR WORK ALL RIGHTS OF DESIGN AND INVENTION ARE RESERVED THIS IS AN ELECTRONICALLY GENERATED DOCUMENT - DO NOT SCALE THIS PRINT						RFP	CAD FILE ee7308	SIZE A	DRAWING NO. EE7308	PAGE 5
						DIST WP				