

PRODUCT INFORMATION PACKET

marathon®
Motors

Model No: 184TTFR4340

Catalog No: C386

Other Purpose Motor, 5 & 3 HP, 3 Ph, 60 & 50 Hz, 230/460 & 190/380 V, 1800 & 1500 RPM, 184TC Frame,
TEFC

Regal and Marathon are trademarks of Regal Rexnord Corporation or one of its affiliated companies.

©2023 Regal Rexnord Corporation, All Rights Reserved. MC017097E

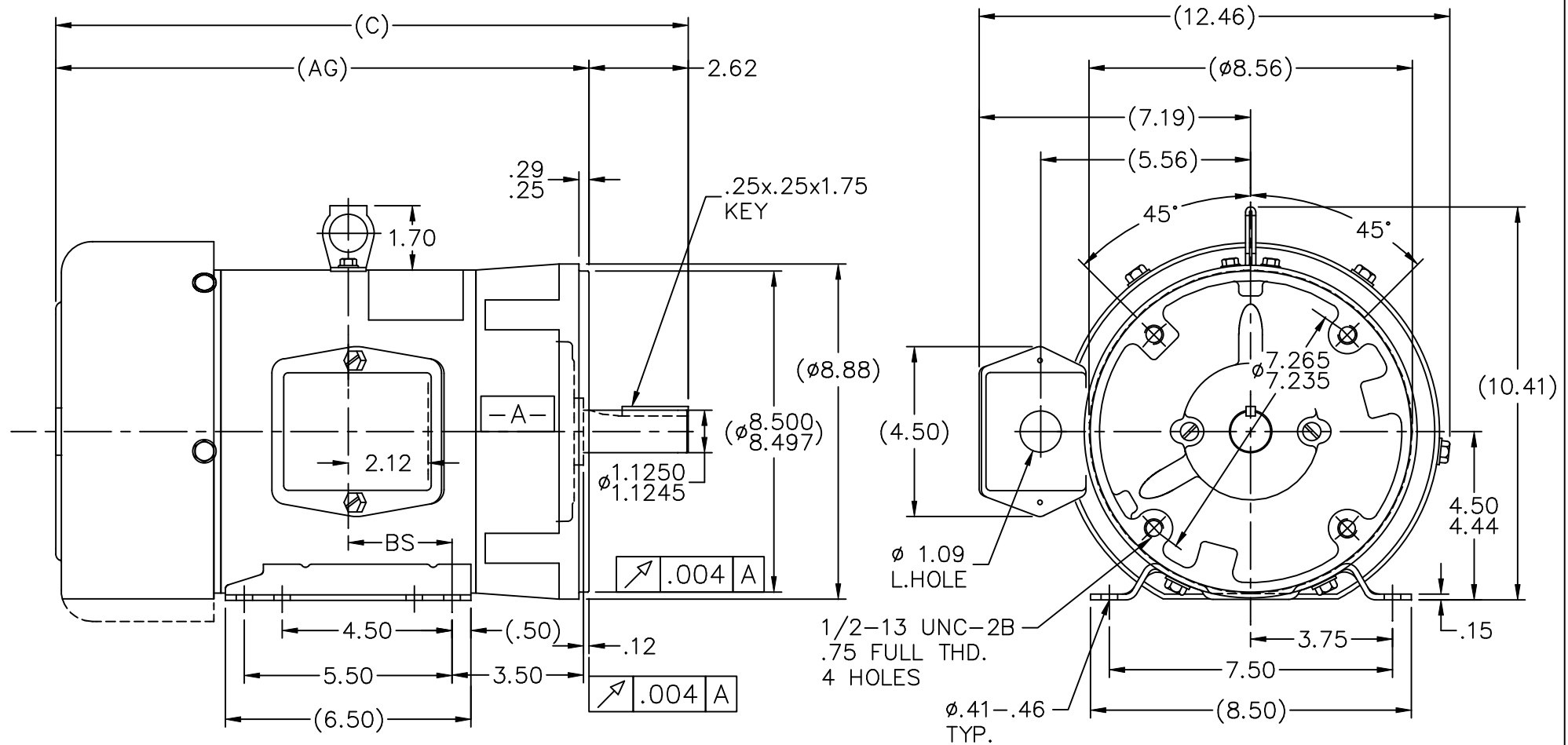
RegalRexnord

Nameplate Specifications

| | | | |
|------------------------|-----------------|----------------------------|-----------------------------|
| Phase | 3 | Output HP | 5 & 3 Hp |
| Output KW | 3.7 & 2.2 kW | Voltage | 230/460 & 190/380 V |
| Speed | 1745 & 1465 rpm | Service Factor | 1.15 & 1.15 |
| Frame | 184TC | Enclosure | Totally Enclosed Fan Cooled |
| Thermal Protection | No Protection | Efficiency | 87.5 & 88.5 % |
| Ambient Temperature | 40 °C | Frequency | 60 & 50 Hz |
| Current | 13/6.5 & 10/5 A | Power Factor | 82.5 |
| Duty | Continuous | Insulation Class | F |
| Design Code | B | KVA Code | J |
| Drive End Bearing Size | 6207 | Opp Drive End Bearing Size | 6205 |
| UL | Recognized | CSA | Y |
| CE | Y | IP Code | 43 |
| Number of Speeds | 1 | | |


Technical Specifications

| | | | |
|-----------------------|-----------------------------|-----------------------|-----------------|
| Electrical Type | Squirrel Cage Induction Run | Starting Method | Across The Line |
| Poles | 4 | Rotation | Reversible |
| Resistance Main | 3.05 Ohms | Mounting | Bolt-on Base |
| Motor Orientation | Horizontal Or Shaft Down | Drive End Bearing | Ball |
| Opp Drive End Bearing | Ball | Frame Material | Rolled Steel |
| Shaft Type | T | Overall Length | 16.50 in |
| Frame Length | 6.75 in | Shaft Diameter | 1.125 in |
| Shaft Extension | 2.75 in | Assembly/Box Mounting | F1/F2 CAPABLE |
| Connection Drawing | A-EE7308 | Outline Drawing | A-SS69258-675 |



1. CONDUIT BOX CAN BE ROTATED IN 90° STEPS.
2. NAMEPLATE TO BE READ FROM SHAFT END OF MOTOR.
3. REMOVABLE BASE
4. PROVISIONS FOR DRIP COVER

| DASH | FR. | C | AG | BS |
|------|------|-------|-------|------|
| 575 | 182T | 15.50 | 12.88 | 2.25 |
| 625 | 182T | 16.00 | 13.38 | 2.50 |
| 675 | 184T | 16.50 | 13.88 | 2.75 |

| | | | | | | | | | |
|--|--|----------------|---------|--------------------------------|------------------|---|----------------------|---------------------|--------------|
| | | | | TOLERANCES UNLESS SPECIFIED | |  | DRAWN HLB 04-17-2002 | | |
| | | | | DEC. | INCHES | | CHK | ML 04-17-2002 | |
| 4 | REVISED DASH'S (AG) | RJW 12-21-2004 | ML | .X | ±.1 | TITLE OUTLINE 180 FR. - TEFC - C' FACE | APPD PH 04-18-2002 | | |
| 3 | REDRAWN IN AUTOCAD | TAT 06-29-2004 | ML | .XX | ±.03 | | SCALE | 1=4 | |
| 2 | REM'D MIN. FRAME LENGTH NOTE, ADD'D -575 MU41322 | HLB 04-23-2002 | ML | .XXX | ±.005 | | REF | | |
| 1 | NEW DRAWING MU41322 | HLB 04-18-2002 | PH | .XXXX | ±.0005 | | FMF | | |
| NO. | REVISION | BY & DATE | CHK | ANG | ± 7'30" | FINISH | PREV | | |
| THIS DRAWING IN DESIGN AND DETAIL IS OUR PROPERTY AND MUST NOT BE USED EXCEPT IN CONNECTION WITH OUR WORK ALL RIGHTS OF DESIGN AND INVENTION ARE RESERVED THIS IS AN ELECTRONICALLY GENERATED DOCUMENT - DO NOT SCALE THIS PRINT | | | RFP | | CAD FILE ss69258 | | SIZE A | DRAWING NO. SS69258 | PAGE OF 4 |
| | | | DIST LB | | | | | | |



| | | | | | | | | |
|--|--|----------------|---------|--------------------------------|-----------------|---|----------|--------------------------|
| | | | | TOLERANCES UNLESS SPECIFIED | |  Regal Beloit America, Inc. | DRAWN RM | 11/20/1990 |
| 5 | CHG TO REGAL LOGO | SL 09/10/2015 | AB | DEC. | INCHES | | CHK ML | 11/21/1990 |
| 4 | REVISED IEC NOTATIONS | MSG 11/15/2011 | CMN | .X | ±.1 | | APPD SAS | 04/24/2003 |
| 3 | ADDED IEC NOTATIONS... (U1), (V1) ETC. MU95194 | MSG 5/10/2010 | MJS | .XX | ±.02 | | SCALE | 1=1 |
| 2 | ADDED THE OPTIONAL CORD CONNECTION MU46318 | RDH 04/24/2003 | DRS | .XXX | ±.005 | TITLE CONNECTION DIAGRAM 3ø – DUAL VOLTAGE MOTOR | | REF |
| 1 | REDRAWN | RM 11/20/1990 | | .XXXX | ±.0005 | MAT'L. | | FMF |
| NO. | REVISION | BY & DATE | CHK | ANG | ±7"30" | FINISH | | PREV |
| THIS DRAWING IN DESIGN AND DETAIL IS OUR PROPERTY AND MUST NOT BE USED EXCEPT IN CONNECTION WITH OUR WORK ALL RIGHTS OF DESIGN AND INVENTION ARE RESERVED THIS IS AN ELECTRONICALLY GENERATED DOCUMENT – DO NOT SCALE THIS PRINT | | | RFP | | CAD FILE ee7308 | | SIZE | DRAWING NO. PAGE OF REV. |
| | | | DIST WP | | | | A | EE7308 |