

PRODUCT INFORMATION PACKET

marathon®
Motors

Model No: 184TTFR4044

Catalog No: U713

General Purpose Motor, 5 & 3 HP, 3 Ph, 60 & 50 Hz, 208-230/460 & 190/380 V, 1800 & 1500 RPM,
184TC Frame, TEFC

Regal and Marathon are trademarks of Regal Rexnord Corporation or one of its affiliated companies.

©2023 Regal Rexnord Corporation, All Rights Reserved. MC017097E

RegalRexnord

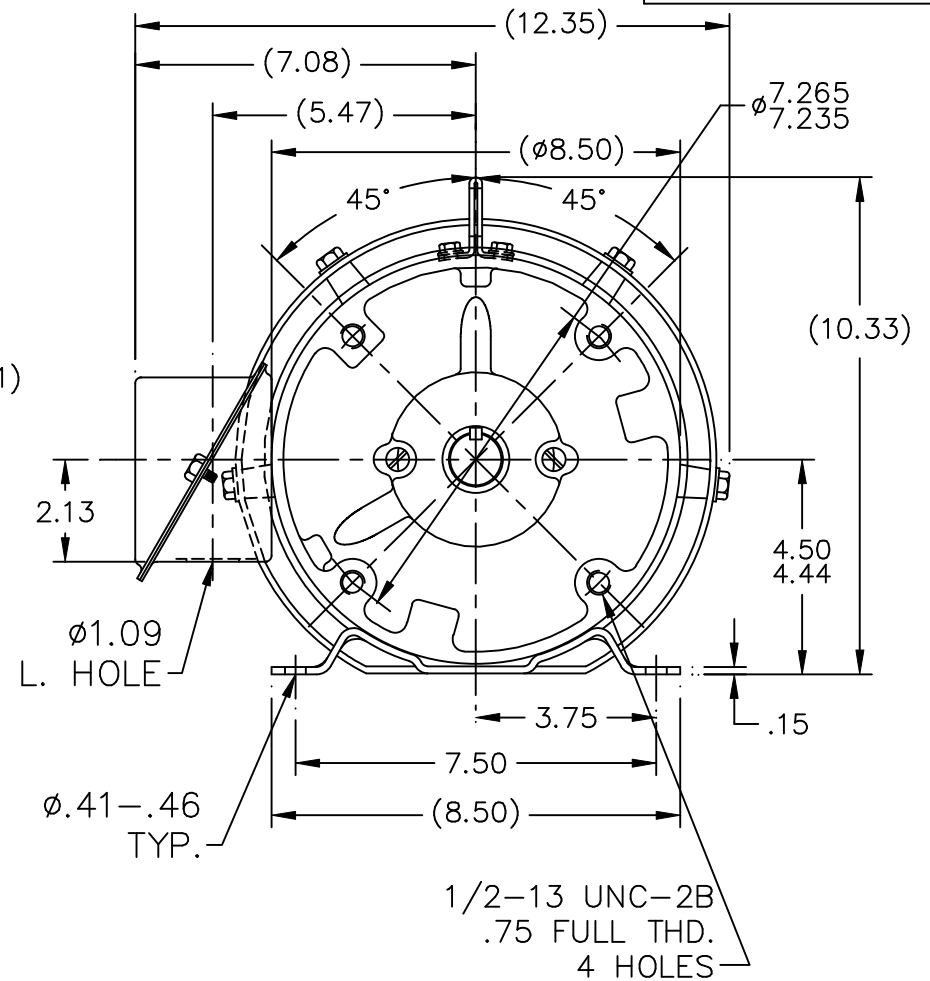
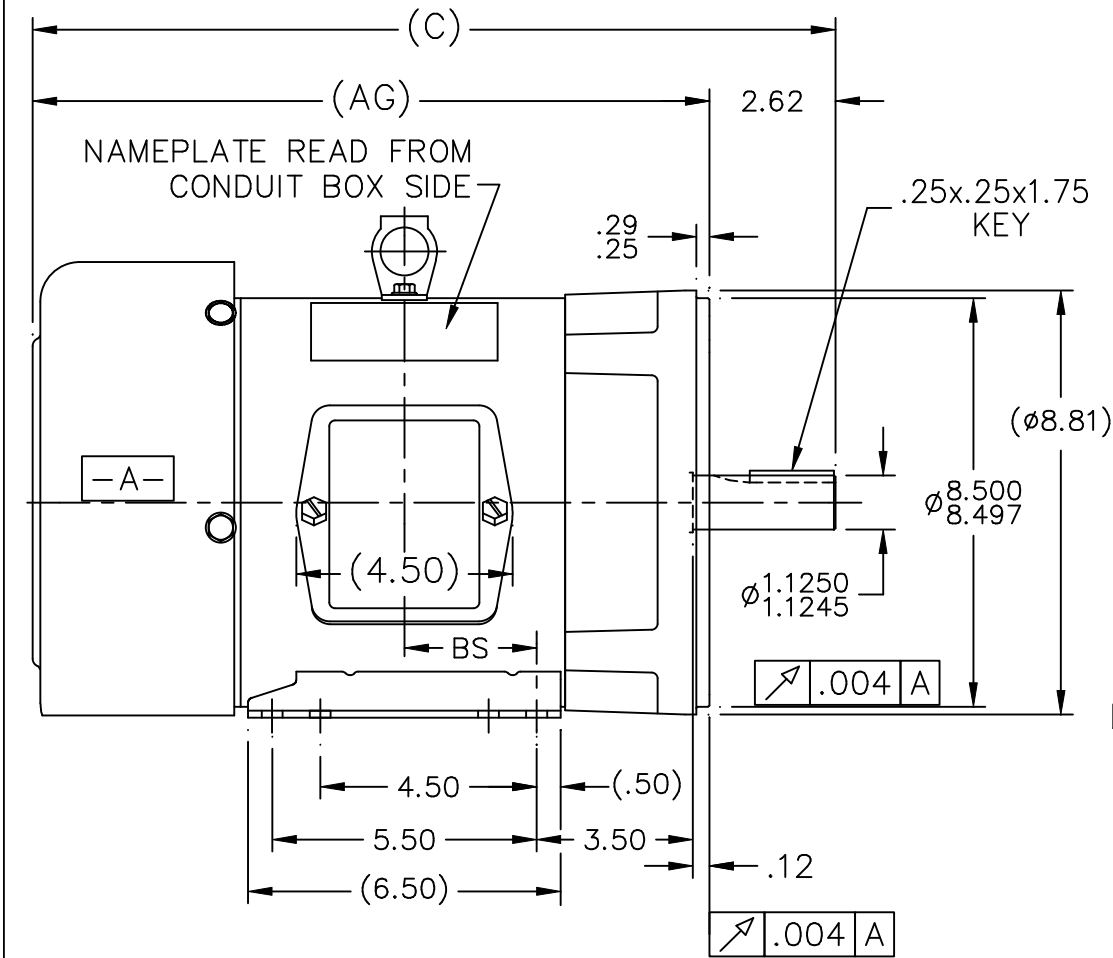
Nameplate Specifications

Phase	3	Output HP	5 & 3 Hp
Output KW	3.7 & 2.2 kW	Voltage	208-230/460 & 190/380 V
Speed	1745 & 1465 rpm	Service Factor	1.15 & 1.15
Frame	184TC	Enclosure	Totally Enclosed Fan Cooled
Thermal Protection	No Protection	Efficiency	87.5 & 88.5 %
Ambient Temperature	40 °C	Frequency	60 & 50 Hz
Current	14-13/6.5 & 10/5 A	Power Factor	82.5
Duty	Continuous	Insulation Class	F
Design Code	B	KVA Code	J
Drive End Bearing Size	6207	Opp Drive End Bearing Size	6205
UL	Recognized	CSA	Y
CE	Y	IP Code	43
Number of Speeds	1		

Technical Specifications

Electrical Type	Squirrel Cage Induction Run	Starting Method	Across The Line
Poles	4	Rotation	Reversible
Resistance Main	3.05 Ohms	Mounting	Rigid Base
Motor Orientation	Horizontal	Drive End Bearing	Ball
Opp Drive End Bearing	Ball	Frame Material	Rolled Steel
Shaft Type	T	Overall Length	16.69 in
Frame Length	6.75 in	Shaft Diameter	1.125 in
Shaft Extension	2.75 in	Assembly/Box Mounting	F1/F2 CAPABLE
Outline Drawing	A-SS65653-675	Connection Drawing	A-EE7308

SS65653



DASH	FR.	C	BS	AG	MOUNTING
575	182T	15.69	2.25	13.07	F1 OR F2
675	182/4T	16.69	2.75	14.07	F1 OR F2
725	182/4T	17.19	3.00	14.57	F1 ONLY
775	182/4T	17.69	3.25	15.07	F1 ONLY

BOX CAN BE ROTATED IN 90° STEPS.
BOX CAN BE MOUNTED ON OPPOSITE SIDE BY
REMOVING BRACKETS & TURNING FRAME 180°.

			TOLERANCES UNLESS SPECIFIED		MARATHON ELECTRIC	DRAWN DJK 01-04-1993		
NO.	REVISION	BY & DATE	CHK	ANG		SCALE	1=4	REF
13	WAS LINCOLN NOW MARATHON T-BLOCK	RJW 01-02-2008	ML	DEC.	INCHES	CHK	ML 01-05-1993	APPD
12	UPDATED DRAWING	RJW 04-20-2007		.X	±.1	APPD	GK 01-05-1993	SCALE
11	ADDED LEESON LIFT LUG CN34025	MSG 08-14-2001		.XX	±.03	TITLE OUTLINE	180 FR. - BB - TS - TEFC	REF
10	REVISED MOUNTING CN27400-320	CAE 05-11-2000		.XXX	±.005	MAT'L.		FMF
9	ADDED MOUNTING TYPE CN27451	DRS 05-05-1999		.XXXX	±.0005	FINISH		PREV
THIS DRAWING IN DESIGN AND DETAIL IS OUR PROPERTY AND MUST NOT BE USED EXCEPT IN CONNECTION WITH OUR WORK ALL RIGHTS OF DESIGN AND INVENTION ARE RESERVED THIS IS AN ELECTRONICALLY GENERATED DOCUMENT - DO NOT SCALE THIS PRINT			RFP	01-05-1993	CAD FILE ss65653	SIZE	DRAWING NO.	PAGE
			DIST	LB		A	SS65653	OF
								REV.
								13



				TOLERANCES UNLESS SPECIFIED		 Regal Beloit America, Inc.	DRAWN RM	11/20/1990
5	CHG TO REGAL LOGO	SL 09/10/2015	AB	DEC.	INCHES		CHK ML	11/21/1990
4	REVISED IEC NOTATIONS	MSG 11/15/2011	CMN	.X	±.1		APPD SAS	04/24/2003
3	ADDED IEC NOTATIONS... (U1), (V1) ETC. MU95194	MSG 5/10/2010	MJS	.XX	±.02		SCALE	1=1
2	ADDED THE OPTIONAL CORD CONNECTION MU46318	RDH 04/24/2003	DRS	.XXX	±.005	TITLE CONNECTION DIAGRAM 3ø – DUAL VOLTAGE MOTOR		REF
1	REDRAWN	RM 11/20/1990		.XXXX	±.0005	MAT'L.		FMF
NO.	REVISION	BY & DATE	CHK	ANG	±7"30"	FINISH		PREV
THIS DRAWING IN DESIGN AND DETAIL IS OUR PROPERTY AND MUST NOT BE USED EXCEPT IN CONNECTION WITH OUR WORK ALL RIGHTS OF DESIGN AND INVENTION ARE RESERVED THIS IS AN ELECTRONICALLY GENERATED DOCUMENT – DO NOT SCALE THIS PRINT			RFP		CAD FILE ee7308		SIZE	DRAWING NO. PAGE OF REV.
			DIST WP				A	EE7308