

PRODUCT INFORMATION PACKET

Model No: 184TTFC6081

Catalog No: E002

2 HP General Purpose Motor, 3 phase, 1200 RPM, 575 V, 184T Frame, TEFC
General Purpose Motors



Regal and Marathon are trademarks of Regal Rexnord Corporation or one of its affiliated companies.
©2021 Regal Rexnord Corporation, All Rights Reserved. MC017097E



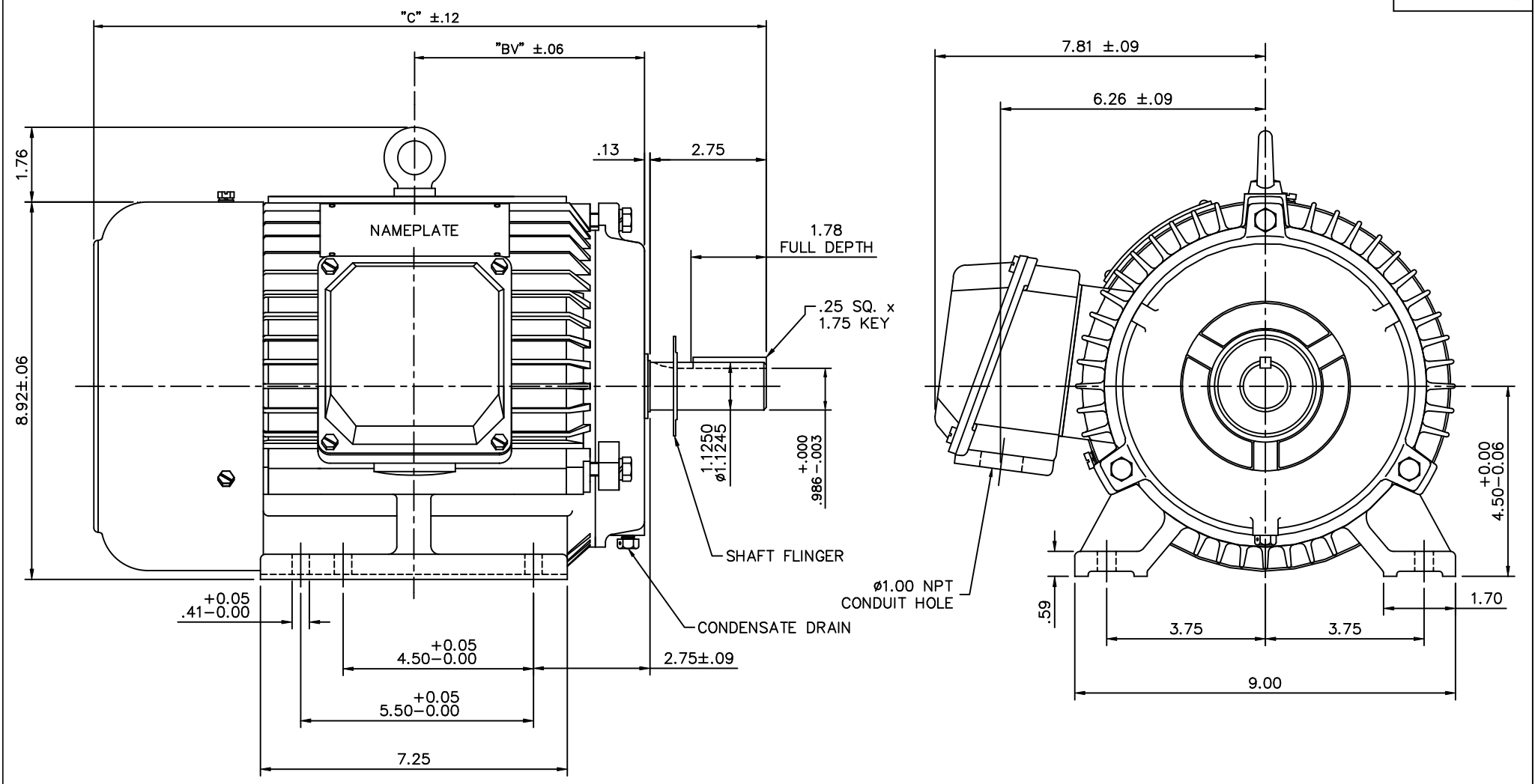
Nameplate Specifications

Output HP	2 Hp	Output KW	1.5 kW
Frequency	60 Hz	Voltage	575 V
Current	2.4 A	Speed	1180 rpm
Service Factor	1.15	Phase	3
Efficiency	88.5 %	Power Factor	69.5
Duty	Continuous	Insulation Class	F
Design Code	B	KVA Code	K
Frame	184T	Enclosure	Totally Enclosed Fan Cooled
Thermal Protection	No	Ambient Temperature	40 °C
Drive End Bearing Size	6206	Opp Drive End Bearing Size	6205
UL	Recognized	CSA	Y
CE	Y	IP Code	43
Number of Speeds	1		

Technical Specifications

Electrical Type	Squirrel Cage Inverter Rated	Starting Method	Line Or Inverter
Poles	6	Rotation	Reversible
Resistance Main	4.65 Ohms	Mounting	Rigid Base
Motor Orientation	Horizontal	Drive End Bearing	Ball
Opp Drive End Bearing	Ball	Frame Material	Cast Iron
Shaft Type	T	Overall Length	16.80 in
Shaft Diameter	1.125 in	Shaft Extension	2.75 in
Assembly/Box Mounting	F1/F2 CAPABLE		
Connection Drawing	005102.01ME	Outline Drawing	16953460ME-184T

This is an uncontrolled document once printed or downloaded and is subject to change without notice. Date Created:10/12/2021



NOTE: 184T HAS 6 MTG. HOLES, USING BOTH 182T AND 184T "2F" LOCATIONS.

FRAME	"C"	"BV"
182T	16.14	5.38
184T	16.80	5.88

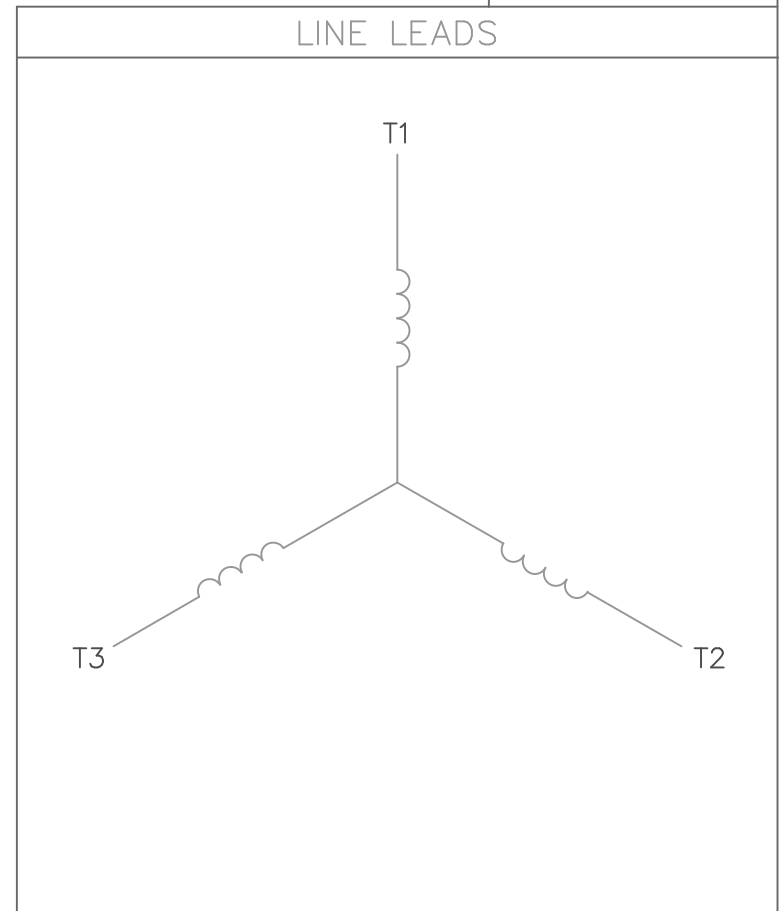
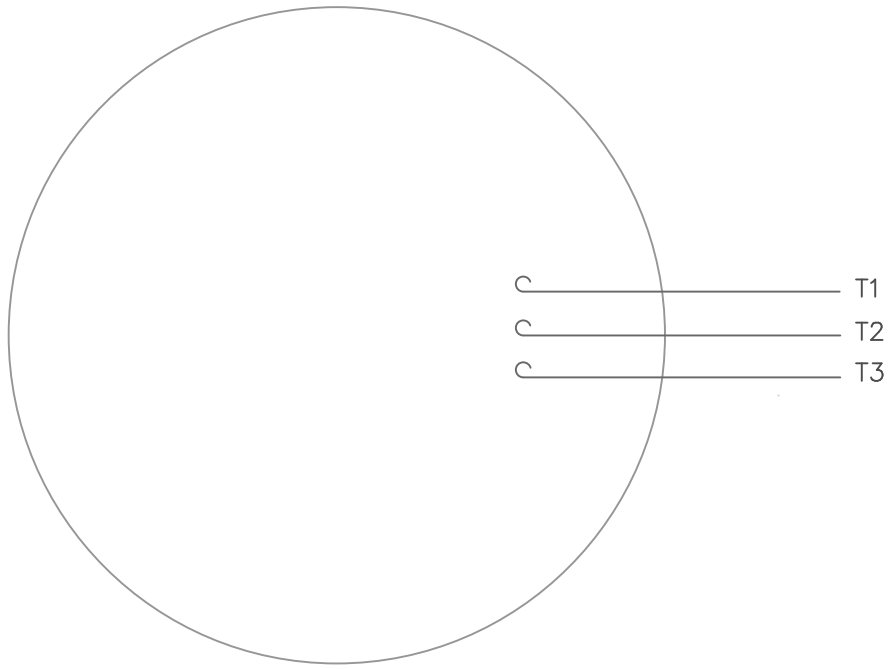
		TOLERANCES UNLESS SPECIFIED		MARATHON ELECTRIC	DRAWN J.J.K. 03/25/99	
NO.	REVISION	BY & DATE	CHK		ANG	FINISH
02	REDRAWN TO CURRENT CAD STANDARDS	CJK 11/14/01	.XX	±.03	TITLE	OUTLINE - 182T & 184T FRAME
01	REDRAWN WITH CURRENT STANDARDS TO CAD	D.R.Z2/15/01	.XXX	±.005		RIGID - TEFC NEW CON-BOX
			.XXXX	±.0005	MAT'L	CAST IRON
			RFP	±1/2"	CAD FILE	16953460ME
			DIST		SIZE	DRAWING NO. B 169534-60ME
					REV.	02

```
ERROR: syntaxerror  
OFFENDING COMMAND: --nostringval--
```

```
STACK:
```

```
/im  
-savelevel-
```

VIEW FROM OUTSIDE OF MOTOR AT SWITCH END.



CONNECT LEADS AS FOLLOWS
FOR FOUR CONDUCTOR CORD ()

CORD	L1 (RED)	L2 (WHITE)	L3 (BLACK)	(GREEN)
MOTOR	T1	T2	T3	GROUND

		TOLERANCES UNLESS SPECIFIED			DRAWN RDW 5/1/02	
		DEC.	INCHES		CHK	
		.X	±.1		APPD	
		.XX	±.01		SCALE 1=1	
		.XXX	±.005		REF	
		.XXXX	±.0005	MAT'L. DECAL - 004169		
NO.	REVISION	BY & DATE	CHK	ANG	FINISH	FMF
			RFP	5/1/02	CAD FILE 00510201ME	SIZE A
			DIST		DRAWING NO. 005102-01ME	REV.

THIS DRAWING IN DESIGN AND DETAIL IS OUR PROPERTY AND MUST NOT BE USED EXCEPT IN CONNECTION WITH OUR WORK ALL RIGHTS OF DESIGN AND INVENTION ARE RESERVED THIS IS AN ELECTRONICALLY GENERATED DOCUMENT - DO NOT SCALE THIS PRINT

CERTIFICATION DATA SHEET

Model#: 184TTFC6081 AA WINDING#: T08706006 NONE 4
 CONN. DIAGRAM: 5102.01ME ASSEMBLY: F1/F2 CAPABLE
 OUTLINE: 169534.60ME

TYPICAL MOTOR PERFORMANCE DATA

HP	KW	SYNC. RPM	F.L. RPM	FRAME	ENCLOSURE	KVA CODE	DESIGN
2	1.49	1200	1180	184T	TEFC	K	B

PH	Hz	VOLTS	FL AMPS	START TYPE	DUTY	INSL	S.F	AMB°C	ELEVATION
3	60	575	2.4	LINE OR INVERTER	CONTINUOUS	F2	1.15	40	3300

FULL LOAD EFF: 88.5	3/4 LOAD EFF: 88.5	1/2 LOAD EFF: 86.5	GTD. EFF	ELEC. TYPE	NO LOAD AMPS
FULL LOAD PF: 69.5	3/4 LOAD PF: 61.5	1/2 LOAD PF: 48.5	87.5	SQ CAGE INV RATED	1.5

F.L. TORQUE	LOCKED ROTOR AMPS	L.R. TORQUE	B.D. TORQUE	F.L. RISE°C
8.9 LB-FT	18	21.2 LB-FT 238	32.3 LB-FT 362	38

SOUND PRESSURE @ 3 FT.	SOUND POWER	ROTOR WK^2	MAX. WK^2	SAFE STALL TIME	STARTS /HOUR	APPROX. MOTOR WGT
50 dBA	60 dBA	- LB-FT^2	- LB-FT^2	20 SEC.	2	101 LBS.

*** SUPPLEMENTAL INFORMATION ***

DE BRACKET TYPE	ODE BRACKET TYPE	MOUNT TYPE	ORIENTATION	SEVERE DUTY	HAZARDOUS LOCATION	DRIP COVER	SCREENS	PAINT
STANDARD	STANDARD	RIGID	HORIZONTAL	FALSE	NONE	FALSE	NONE	BLUE (ENAMEL)

BEARINGS		GREASE	SHAFT TYPE	SPECIAL DE	SPECIAL ODE	SHAFT MATERIAL	FRAME MATERIAL
DE	OPE						
BALL	BALL	POLYREX EM	T	NONE	NONE	1045 HOT ROLLED (C-204)	CAST IRON
6206	6205						

THERMO-PROTECTORS				THERMISTORS	CONTROL	SPACE /n HEATERS
THERMOSTATS	PROTECTORS	WDG RTDs	BRG RTDs			
NONE	NOT	NONE	NONE	NONE	FALSE	NONE VOLTS

If Inverter equals NONE, contact factory for further information

* N O T E S *	INVERTER TORQUE: CONSTANT 20:1
	INV. HP SPEED RANGE: 1.5 X BASE SPEED
	ENCODER: NONE NONE NONE NONE NONE PPR
	BRAKE: NONE NONE NONE P/N NONE NONE NONE NONE FT-LB NONE V NONE Hz

DATE: 06/28/2017 07:21:04 AM
 FORM 3531 REV.3 02/07/99
 ** Subject to change without notice.

Data Sheet

Date: 6/29/2017

184TFC6081

Customer: _____



Attention: _____

Submittal

Submitted by: FAREEDA DUDEKULA

Data @ 575 V

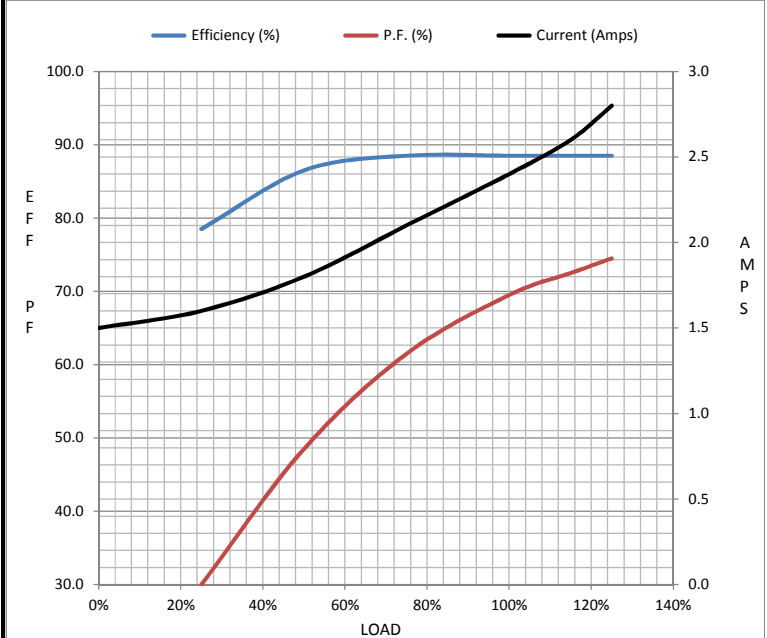
Motor Load Data

Load	0%	25%	50%	75%	100%	115%	125%	LR
Current (Amps)	1.50	1.60	1.80	2.10	2.40	2.60	2.80	18.0
Torque (ft-lb)	0.00	2.20	4.4	6.6	8.9	10.2	11.2	21.2
RPM	1200	1195	1192	1185	1180	1,180	1177	0
Efficiency (%)		78.5	86.5	88.5	88.5	88.5	88.5	
P.F. (%)	6.0	30.0	48.5	61.5	69.5	72.5	74.5	44.5

Motor Speed Data

	LR	Pull-Up	BD	Rated	Idle
Speed (RPM)	0	350	1055	1180	1200
Current (Amps)	18.0	17.5	8.5	2.40	1.50
Torque (ft-lb)	21.2	18.0	32.3	8.9	0.00

Information Block				
HP	2.0			
Sync. RPM	1200			
Frame	184			
Enclosure	TEFC			
Construction	TFC			
Voltage	575 V			
Frequency	60 Hz			
Design	B			
LR Code letter	K			
Service Factor	1.15			
Temp Rise @ FL	38 °C			
Duty	CONT			
Ambient	40 °C			
Elevation	1,000 feet			
Rotor/Shaft wk ²	0.00 Lb-Ft ²			
Ref Wdg	T08706006 NONE			
Sound Pressure @ 1M	50 dBA			
VFD Rating	CONSTANT 20:1			
Outline Dwg	169534.60ME			
Conn. Diag	5102.01ME			
Additional Specifications:				
0				
0				
EQUIV CKT (OHMS / PHASE)				
R1	R2	X1	X2	Xm
2.6980	1.5620	9.3720	12.9220	156.2000



Speed -Torque Curve

