

# PRODUCT INFORMATION PACKET

**marathon®**  
Motors

Model No: 184TTFC6027

Catalog No: U618A

XRI® General Purpose General Purpose Motor, 5 & 5 HP, 3 Ph, 60 & 50 Hz, 230/460 & 190/380 V,  
1800 & 1500 RPM, 184T Frame, TEFC



Regal and Marathon are trademarks of Regal Rexnord Corporation or one of its affiliated companies.

©2023 Regal Rexnord Corporation, All Rights Reserved. MC017097E

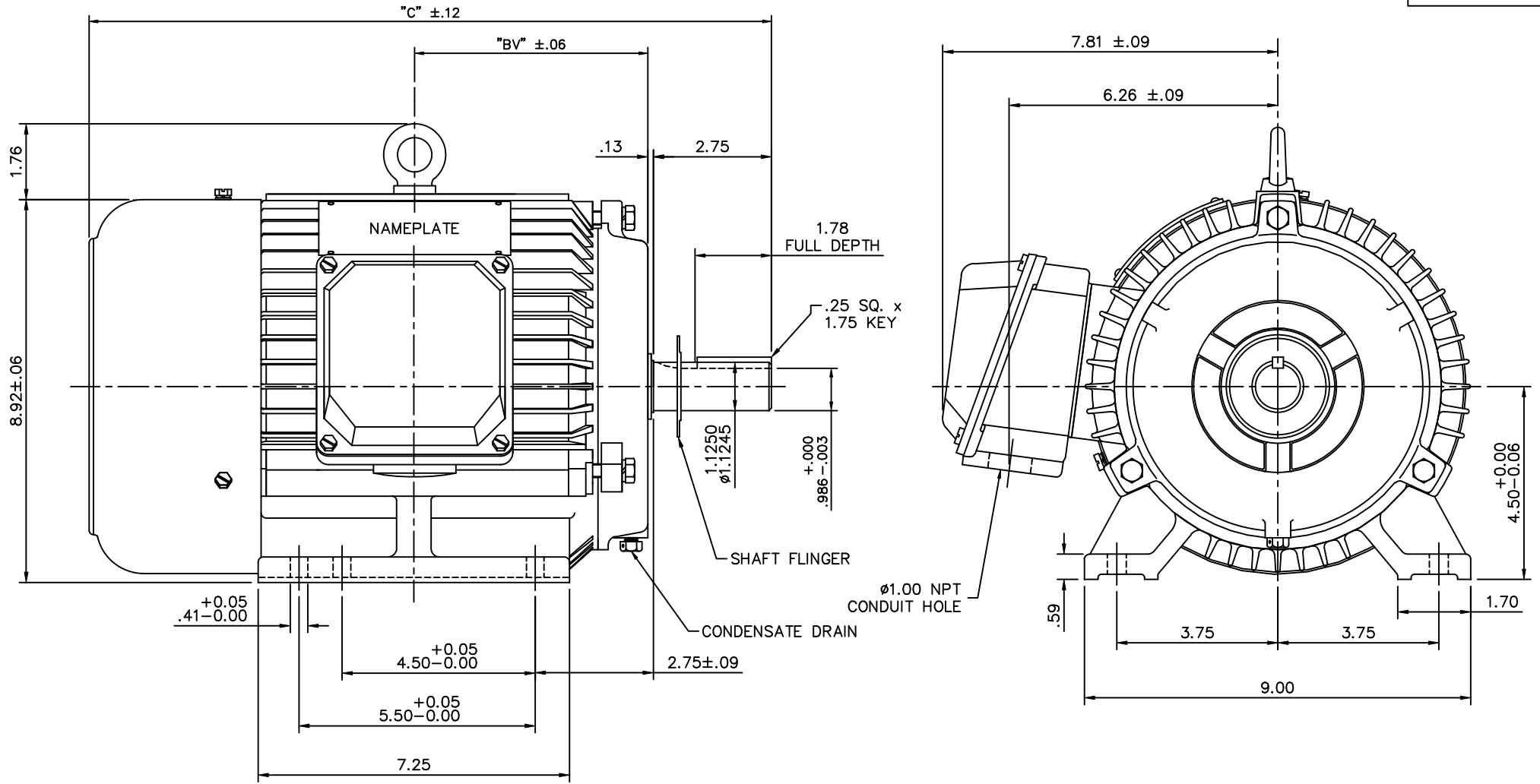
**RegalRexnord**

### Nameplate Specifications

Phase	3	Output HP	5 & 5 Hp
Output KW	3.7 & 3.7 kW	Voltage	230/460 & 190/380 V
Speed	1760 & 1445 rpm	Service Factor	1.15 & 1.15
Frame	184T	Enclosure	Totally Enclosed Fan Cooled
Thermal Protection	No Protection	Efficiency	89.5 & 86.5 %
Ambient Temperature	40 °C	Frequency	60 & 50 Hz
Current	12.8/6.4 & 15.4/7.7 A	Power Factor	81.5
Duty	Continuous	Insulation Class	F
Design Code	B	KVA Code	J
Drive End Bearing Size	6206	Opp Drive End Bearing Size	6205
UL	Recognized	CSA	Y
CE	Y	IP Code	43
Number of Speeds	1		

### Technical Specifications

Electrical Type	Squirrel Cage Induction Run	Starting Method	Across The Line
Poles	4	Rotation	Reversible
Resistance Main	2.019 Ohms	Mounting	Rigid Base
Motor Orientation	Horizontal	Drive End Bearing	Ball
Opp Drive End Bearing	Ball	Frame Material	Cast Iron
Shaft Type	T	Overall Length	16.80 in
Shaft Diameter	1.125 in	Shaft Extension	2.75 in
Assembly/Box Mounting	F1/F2 CAPABLE		
Outline Drawing	16953460ME-184T	Connection Drawing	00501001ME



NOTE: 184T HAS 6 MTG. HOLES, USING BOTH 182T AND 184T "2F" LOCATIONS.

FRAME	"C"	"BV"
182T	16.14	5.38
184T	16.80	5.88

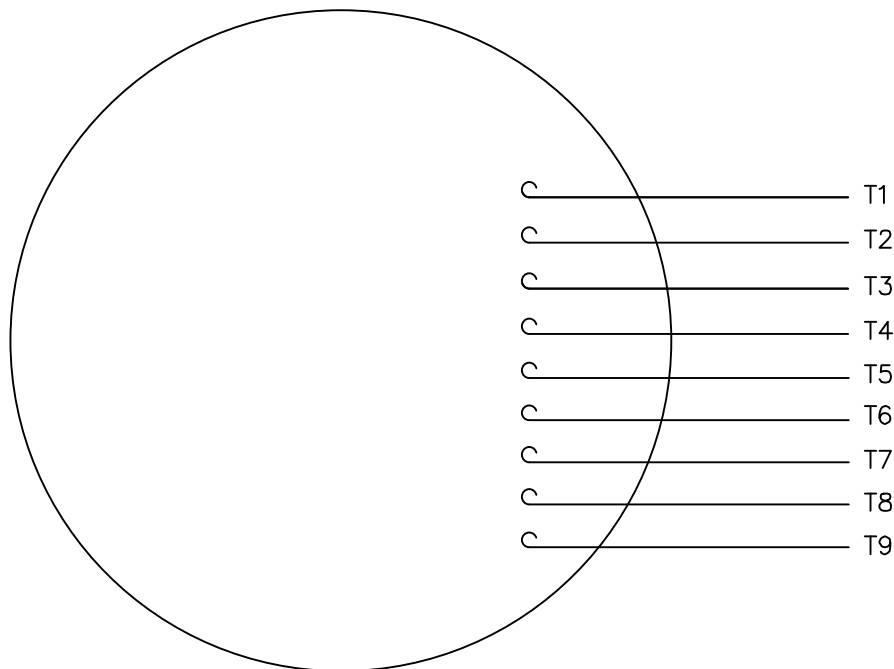
			TOLERANCES UNLESS SPECIFIED		MARATHON ELECTRIC	DRAWN J.J.K. 03/25/99	
			DEC.	INCHES		CHK	
			.X	$\pm .1$		APPD	P.G. 03/31/99
02	REDRAWN TO CURRENT CAD STANDARDS	CJK 11/14/01	.XX	$\pm .03$	TITLE	OUTLINE - 182T & 184T FRAME	SCALE 7-16
01	REDRAWN WITH CURRENT STANDARDS TO CAD	D.R.Z2/15/01	.XXX	$\pm .005$		RIGID - TEFC NEW CON-BOX	REF 169500
NO.	REVISION	BY & DATE	.XXXX	$\pm .0005$	MAT'L	CAST IRON	FMF
			CHK	ANG	FINISH		PREV
THIS DRAWING IN DESIGN AND DETAIL IS OUR PROPERTY AND MUST NOT BE USED EXCEPT IN CONNECTION WITH OUR WORK ALL RIGHTS OF DESIGN AND INVENTION ARE RESERVED THIS IS AN ELECTRONICALLY GENERATED DOCUMENT - DO NOT SCALE THIS PRINT			RFP		CAD FILE	16953460ME	SIZE B
			DIST				DRAWING NO. 169534-60ME
							REV. 02

ERROR: syntaxerror  
OFFENDING COMMAND: --nostringval--

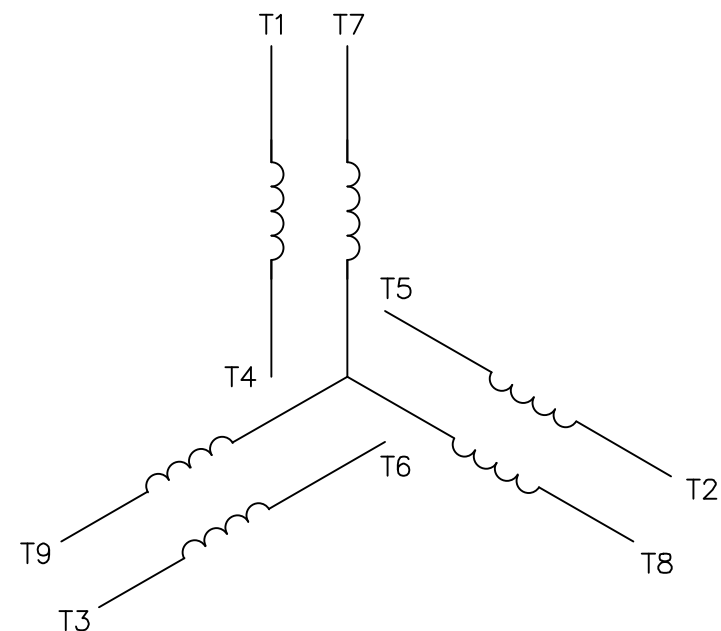
STACK:

/im  
-savelevel-


VIEW FROM OUTSIDE OF MOTOR AT SWITCH END.



## LINE LEADS



VOLTAGE	L1	L2	L3	JOIN & INSULATE
HIGH	T1	T2	T3	(T4,T7) (T5,T8) (T6,T9)
LOW	T1,T7	T2,T8	T3,T9	T4,T5,T6

				TOLERANCES UNLESS SPECIFIED			DRAWN RDW 04/12/02			
				DEC.	INCHES		CHK			
				.X	±.1		APPD			
				.XX	±.01		SCALE 1=1			
				.XXX	±.005	TITLE EXTERNAL WIRING DIAGRAM 3 PHASE W/O PROTECTOR		REF FIG.2-51		
				.XXXX	±.0005	MAT'L. DECAL - 004014		FMF		
NO.	REVISION	BY & DATE	CHK	ANG	±1/2"	FINISH		PREV		
THIS DRAWING IN DESIGN AND DETAIL IS OUR PROPERTY AND MUST NOT BE USED EXCEPT IN CONNECTION WITH OUR WORK ALL RIGHTS OF DESIGN AND INVENTION ARE RESERVED THIS IS AN ELECTRONICALLY GENERATED DOCUMENT - DO NOT SCALE THIS PRINT			RFP	04/12/02		CAD FILE 00501001ME		SIZE A	DRAWING NO. 005010-01ME	REV.
			DIST							

## CERTIFICATION DATA SHEET

Model#: 184TTFC6027 AA  
 CONN. DIAGRAM: 00501001ME  
 OUTLINE: 169534.60ME

WINDING#: T08704022 NONE 3  
 ASSEMBLY: F1/F2 CAPABLE

## TYPICAL MOTOR PERFORMANCE DATA

HP	KW	SYNC. RPM	F.L. RPM	FRAME	ENCLOSURE	KVA CODE	DESIGN
5&5	3.70&3.70	1800	1760&1445	184T	TEFC	J	B

PH	Hz	VOLTS	FL AMPS	START TYPE	DUTY	INSL	S.F	AMB°C	ELEVATION
3	60/50	230/460#190/ 380	12.8/6.4&15.4/ 7.7	ACROSS THE LINE	CONTINUOU S	F2	1.15/1.15	40	3300

FULL LOAD EFF: 89.5&86.5	3/4 LOAD EFF: 89.5	1/2 LOAD EFF: 89.5	GTD. EFF	ELEC. TYPE	NO LOAD AMPS
FULL LOAD PF: 81.5&84.5	3/4 LOAD PF: 74.9	1/2 LOAD PF: 64	87.5	SQ CAGE IND RUN	6 / 3

F.L. TORQUE	LOCKED ROTOR AMPS	L.R. TORQUE	B.D. TORQUE	F.L. RISE°C
14.9 LB-FT	98 / 49	33.8 LB-FT 227	50.2 LB-FT 337	43.5

SOUND PRESSURE @ 3 FT.	SOUND POWER	ROTOR WK^2	MAX. WK^2	SAFE STALL TIME	STARTS /HOUR	APPROX. MOTOR WGT
61 dBA	71 dBA	- LB-FT^2	- LB-FT^2	- SEC.	-	- LBS.

## \*\*\* SUPPLEMENTAL INFORMATION \*\*\*

DE BRACKET TYPE	ODE BRACKET TYPE	MOUNT TYPE	ORIENTATION	SEVERE DUTY	HAZARDOUS LOCATION	DRIP COVER	SCREENS	PAINT
STANDARD	STANDARD	RIGID	HORIZONTAL	FALSE	NONE	FALSE	NONE	BLUE (ENAMEL)

BEARINGS		GREASE	SHAFT TYPE	SPECIAL DE	SPECIAL ODE	SHAFT MATERIAL	FRAME MATERIAL
DE	OPE						
BALL	BALL	POLYREX EM	T	NONE	NONE	1045 HOT ROLLED (C-204)	CAST IRON
6206	6205						

THERMO-PROTECTORS				THERMISTORS	CONTROL	SPACE /n HEATERS
THERMOSTATS	PROTECTORS	WDG RTDs	BRG RTDs			
NONE	NOT	NONE	NONE	NONE	FALSE	NONE VOLTS

If Inverter equals NONE, contact factory for further  
information

INVERTER TORQUE: NONE  
 INV. HP SPEED RANGE: NONE

ENCODER: NONE  
 NONE NONE  
 NONE NONE PPR

BRAKE: NONE NONE  
 NONE P/N NONE  
 NONE NONE  
 NONE FT-LB NONE V NONE Hz

\*  
N  
O  
T  
E  
S  
\*

DATE: 06/28/2017 07:18:41 AM  
 FORM 3531 REV.3 02/07/99  
 \*\* Subject to change without notice.

## Data Sheet

Date: 6/20/2017

Customer: \_\_\_\_\_

Attention: \_\_\_\_\_

Submitted by: FAREEDA DUDEKULA



184TTFC6027

Submittal

Data @ 460 V

## Motor Load Data

Load	0%	25%	50%	75%	100%	115%	125%	LR	
Current (Amps)	3.0	3.3	4.1	5.2	6.4	7.3	7.9	49.0	
Torque (ft-lb)	0.00	3.7	7.4	11.1	14.9	17.3	18.8	33.8	
RPM	1800	1790	1780	1770	1760	1,750	1745	0	
Efficiency (%)		84.9	89.5	89.5	89.5	88.5	88.5		
P.F. (%)	6.6	42.2	64.0	74.9	81.5	83.0	83.5	0.0	

## Motor Speed Data

	LR	Pull-Up	BD	Rated	Idle					
Speed (RPM)	0	600	1535	1760	1800					
Current (Amps)	49.0	46.5	30.0	6.4	3.0					
Torque (ft-lb)	33.8	28.7	50.2	14.9	0.00					
<div><div>Efficiency (%)</div><div>P.F. (%)</div><div>Current (Amps)</div></div> <div>EFFICIENCY (%)</div> <div>P.F. (%)</div> <div>CURRENT (AMPS)</div>						Information Block				
						HP		5.0		
						Sync. RPM		1800		
						Frame		112		
						Enclosure		TEFC		
						Construction		TFC		
						Voltage		3-230/460#190/°V		
						Frequency		60 Hz		
						Design		B		
						LR Code letter		J		
						Service Factor		1.15		
						Temp Rise @ FL		44 °C		
						Duty		CONT		
						Ambient		40 °C		
						Elevation		1,000 feet		
						Rotor/Shaft wk²		0.00 Lb-Ft²		
						Ref Wdg		T08704022 NONE		
Sound Pressure @ 1M		61 dBA								
VFD Rating		NONE								
Outline Dwg		169534.60ME								
Conn. Diag		5010.01								
Additional Specifications:										
0										
0										
EQUIV CKT (OHMS / PHASE)										
R1		R2		X1		X2		Xm		
0.0000		0.0000		0.0000		0.0000		0.0000		

## Speed -Torque Curve

