

PRODUCT INFORMATION PACKET

marathon®
Motors

Model No: 184TTFC6006

Catalog No: U615A

5 HP General Purpose Motor, 3 phase, 3600 RPM, 575 V, 184T Frame, TEFC
General Purpose Motors



Regal and Marathon are trademarks of Regal Rexnord Corporation or one of its affiliated companies.
©2021 Regal Rexnord Corporation, All Rights Reserved. MC017097E

RegalRexnord

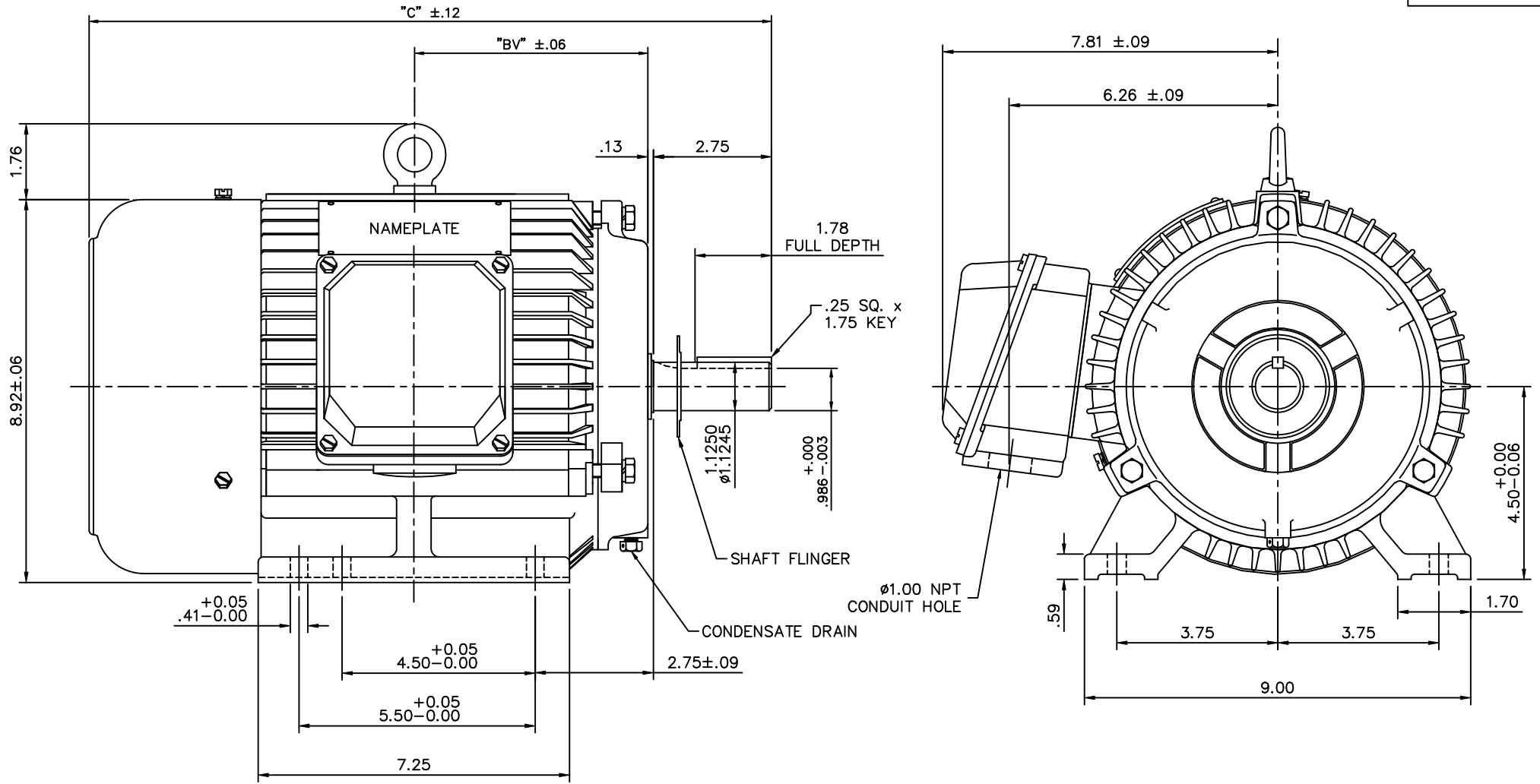
Nameplate Specifications

Output HP	5 Hp	Output KW	3.7 kW
Frequency	60 Hz	Voltage	575 V
Current	4.7 A	Speed	3510 rpm
Service Factor	1.15	Phase	3
Efficiency	88.5 %	Power Factor	89.5
Duty	Continuous	Insulation Class	F
Design Code	B	KVA Code	J
Frame	184T	Enclosure	Totally Enclosed Fan Cooled
Thermal Protection	No	Ambient Temperature	40 °C
Drive End Bearing Size	6206	Opp Drive End Bearing Size	6205
UL	Recognized	CSA	Y
CE	Y	IP Code	43
Number of Speeds	1		

Technical Specifications

Electrical Type	Squirrel Cage Induction Run	Starting Method	Across The Line
Poles	2	Rotation	Reversible
Resistance Main	2.32 Ohms	Mounting	Rigid Base
Motor Orientation	Horizontal	Drive End Bearing	Ball
Opp Drive End Bearing	Ball	Frame Material	Cast Iron
Shaft Type	T	Overall Length	16.80 in
Shaft Diameter	1.125 in	Shaft Extension	2.75 in
Assembly/Box Mounting	F1/F2 CAPABLE		
Connection Drawing	00510201ME	Outline Drawing	16953460ME-184T

This is an uncontrolled document once printed or downloaded and is subject to change without notice. Date Created:10/12/2021



NOTE: 184T HAS 6 MTG. HOLES, USING BOTH 182T AND 184T "2F" LOCATIONS.

FRAME	"C"	"BV"
182T	16.14	5.38
184T	16.80	5.88

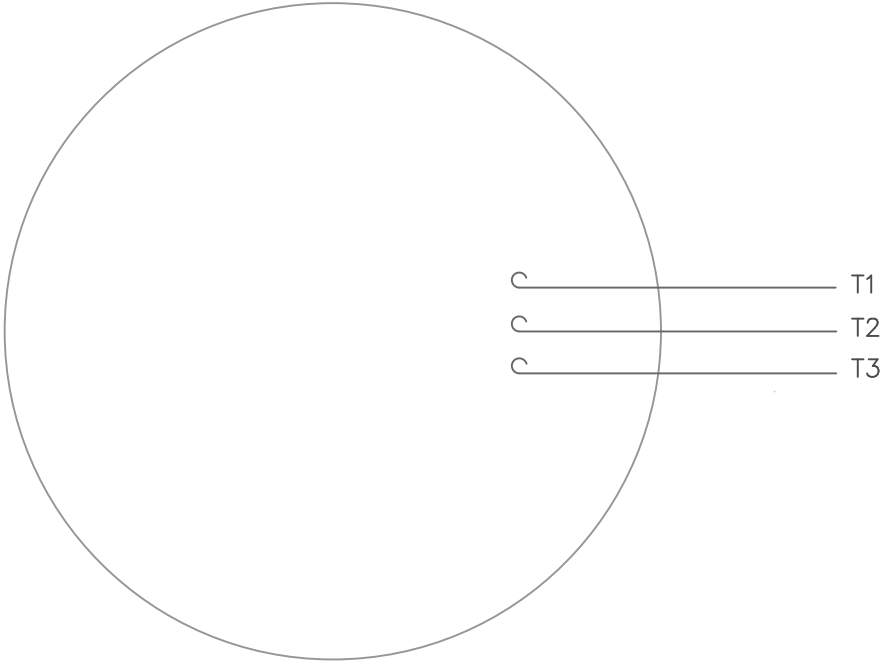
			TOLERANCES UNLESS SPECIFIED		MARATHON ELECTRIC	DRAWN J.J.K. 03/25/99	
			DEC.	INCHES		CHK	
			.X	$\pm .1$		APPD	P.G. 03/31/99
02	REDRAWN TO CURRENT CAD STANDARDS	CJK 11/14/01	.XX	$\pm .03$	TITLE	OUTLINE - 182T & 184T FRAME	SCALE 7-16
01	REDRAWN WITH CURRENT STANDARDS TO CAD	D.R.Z2/15/01	.XXX	$\pm .005$		RIGID - TEFC NEW CON-BOX	REF 169500
NO.	REVISION	BY & DATE	.XXXX	$\pm .0005$	MAT'L	CAST IRON	FMF
			CHK	ANG $\pm 1/2^\circ$	FINISH		PREV
THIS DRAWING IN DESIGN AND DETAIL IS OUR PROPERTY AND MUST NOT BE USED EXCEPT IN CONNECTION WITH OUR WORK ALL RIGHTS OF DESIGN AND INVENTION ARE RESERVED THIS IS AN ELECTRONICALLY GENERATED DOCUMENT - DO NOT SCALE THIS PRINT			RFP		CAD FILE	16953460ME	SIZE B
			DIST				DRAWING NO. 169534-60ME
							REV. 02

ERROR: syntaxerror
OFFENDING COMMAND: --nostringval--

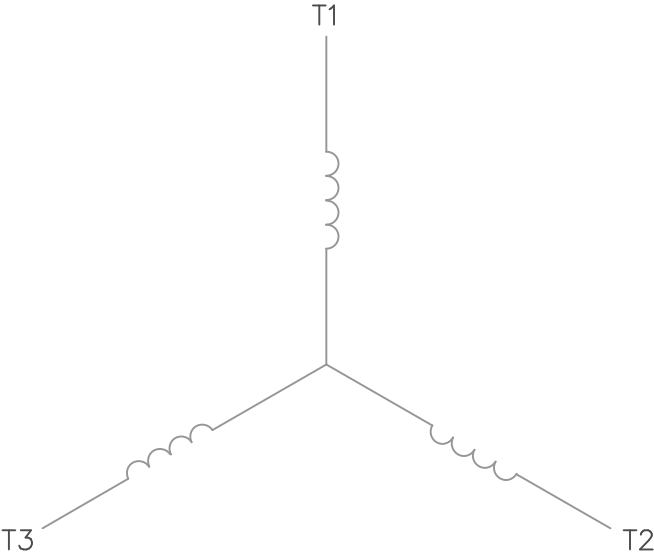
STACK:

/im
-savelevel-

VIEW FROM OUTSIDE OF MOTOR AT SWITCH END.




LINE LEADS



CONNECT LEADS AS FOLLOWS
FOR FOUR CONDUCTOR CORD ()

CORD	L1 (RED)	L2 (WHITE)	L3 (BLACK)	(GREEN)
MOTOR	T1	T2	T3	GROUND

				TOLERANCES UNLESS SPECIFIED			DRAWN RDW 5/1/02		
				DEC.	INCHES		CHK		
				.X	±.1		APPD		
				.XX	±.01		SCALE 1=1		
				.XXX	±.005		REF		
				.XXXX	±.0005	MAT'L. DECAL - 004169		FMF	
NO.	REVISION	BY & DATE	CHK	ANG	±1/2°	FINISH		PREV	
THIS DRAWING IN DESIGN AND DETAIL IS OUR PROPERTY AND MUST NOT BE USED EXCEPT IN CONNECTION WITH OUR WORK ALL RIGHTS OF DESIGN AND INVENTION ARE RESERVED THIS IS AN ELECTRONICALLY GENERATED DOCUMENT - DO NOT SCALE THIS PRINT			RFP 5/1/02		CAD FILE 00510201ME		SIZE A	DRAWING NO. 005102-01ME	REV.
			DIST						

CERTIFICATION DATA SHEET

Model#: 184TTFC6006 AA

WINDING#: T08702011 NONE 4

CONN. DIAGRAM: 00510201ME

ASSEMBLY: F1/F2 CAPABLE

OUTLINE: 169534.60ME

TYPICAL MOTOR PERFORMANCE DATA

HP	KW	SYNC. RPM	F.L. RPM	FRAME	ENCLOSURE	KVA CODE	DESIGN
5	3.70	3600	3510	184T	TEFC	J	B

PH	Hz	VOLTS	FL AMPS	START TYPE	DUTY	INSL	S.F	AMB°C	ELEVATION
3	60	575	4.7	ACROSS THE LINE	CONTINUOUS	F2	1.15	40	3300

FULL LOAD EFF: 88.5	3/4 LOAD EFF: 89.5	1/2 LOAD EFF: 89.5	GTD. EFF	ELEC. TYPE	NO LOAD AMPS
FULL LOAD PF: 89.5	3/4 LOAD PF: 85	1/2 LOAD PF: 75.5	87.5	SQ CAGE IND RUN	1.7

F.L. TORQUE	LOCKED ROTOR AMPS	L.R. TORQUE	B.D. TORQUE	F.L. RISE°C
7.5 LB-FT	37.5	15.8 LB-FT 210	24.7 LB-FT 329	71

SOUND PRESSURE @ 3 FT.	SOUND POWER	ROTOR WK^2	MAX. WK^2	SAFE STALL TIME	STARTS /HOUR	APPROX. MOTOR WGT
57 dBA	67 dBA	0.3 LB-FT^2	- LB-FT^2	15 SEC.	2	- LBS.

*** SUPPLEMENTAL INFORMATION ***

DE BRACKET TYPE	ODE BRACKET TYPE	MOUNT TYPE	ORIENTATION	SEVERE DUTY	HAZARDOUS LOCATION	DRIP COVER	SCREENS	PAINT
STANDARD	STANDARD	RIGID	HORIZONTAL	FALSE	NONE	FALSE	NONE	BLUE (ENAMEL)

BEARINGS		GREASE	SHAFT TYPE	SPECIAL DE	SPECIAL ODE	SHAFT MATERIAL	FRAME MATERIAL
DE	OPE						
BALL	BALL						
6206	6205	POLYREX EM	T	NONE	NONE	1045 HOT ROLLED (C-204)	CAST IRON

THERMO-PROTECTORS				THERMISTORS	CONTROL	SPACE /n HEATERS
THERMOSTATS	PROTECTORS	WDG RTDs	BRG RTDs			
NONE	NOT	NONE	NONE	NONE	FALSE	NONE VOLTS

If Inverter equals NONE, contact factory for further information

*
N
O
T
E
*

INVERTER TORQUE: NONE
INV. HP SPEED RANGE: NONE
ENCODER: NONE
NONE NONE
NONE NONE PPR
BRAKE: NONE NONE
NONE P/N NONE
NONE NONE
NONE FT-LB NONE V NONE Hz

DATE: 06/28/2017 07:17:54 AM

FORM 3531 REV.3 02/07/99

** Subject to change without notice.

Data Sheet

Date: 19-06-2017

Customer:

Attention:

Submitted by: FAREEDA DUDEKULA



184TTFC6006

Submittal

Data @ 575 V

Motor Load Data

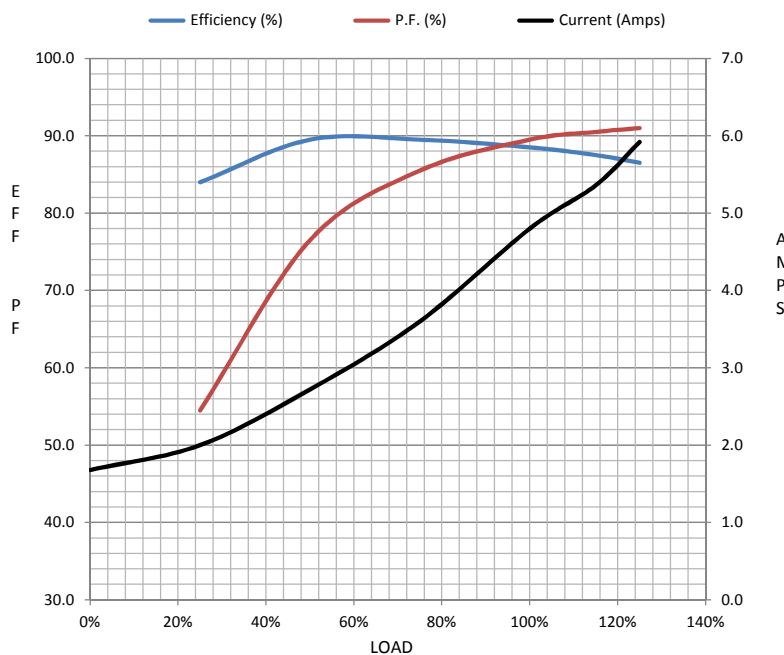
Load	0%	25%	50%	75%	100%	115%	125%	LR	
Current (Amps)	1.68	2.00	2.72	3.6	4.8	5.4	5.9	36.8	
Torque (ft-lb)	0.00	1.80	3.7	5.5	7.5	8.6	9.4	15.3	
RPM	3600	3580	3560	3535	3510	3,495	3480	0	
Efficiency (%)		84.0	89.5	89.5	88.5	87.5	86.5		
P.F. (%)	8.5	54.5	76.5	85.5	89.5	90.5	91.0	55.0	

Motor Speed Data

	LR	Pull-Up	BD	Rated	Idle
Speed (RPM)	0	1800	2955	3510	3600
Current (Amps)	36.8	33.2	23.6	4.8	1.68
Torque (ft-lb)	15.3	17.0	25.0	7.5	0.00

Information Block

HP	5.0			
Sync. RPM	3600			
Frame	184			
Enclosure	TEFC			
Construction	TFC			
Voltage	575 V			
Frequency	60 Hz			
Design	B			
LR Code letter	J			
Service Factor	1.15			
Temp Rise @ FL	71 ° C			
Duty	CONT			
Ambient	40 ° C			
Elevation	1,000 feet			
Rotor/Shaft wk²	0.30 Lb-Ft²			
Ref Wdg	T08702011 NONE			
Sound Pressure @ 1M	72 dBA			
VFD Rating	NONE			
Outline Dwg	169534.60ME			
Conn. Diag	5102.01ME			
Additional Specifications:				
0				
365THFS8036				
EQUIV CKT (OHMS / PHASE)				
R1	R2	X1	X2	Xm
2.1740	1.7660	7.5170	2.8840	195.2500



Speed -Torque Curve

