

PRODUCT INFORMATION PACKET

marathon®
Motors

Model No: 184TTFC6002

Catalog No: U613A

5 HP General Purpose Motor, 3 phase, 3600 RPM, 208-230/460 V, 184T Frame, TEFC
General Purpose Motors



Regal and Marathon are trademarks of Regal Rexnord Corporation or one of its affiliated companies.
©2021 Regal Rexnord Corporation, All Rights Reserved. MC017097E

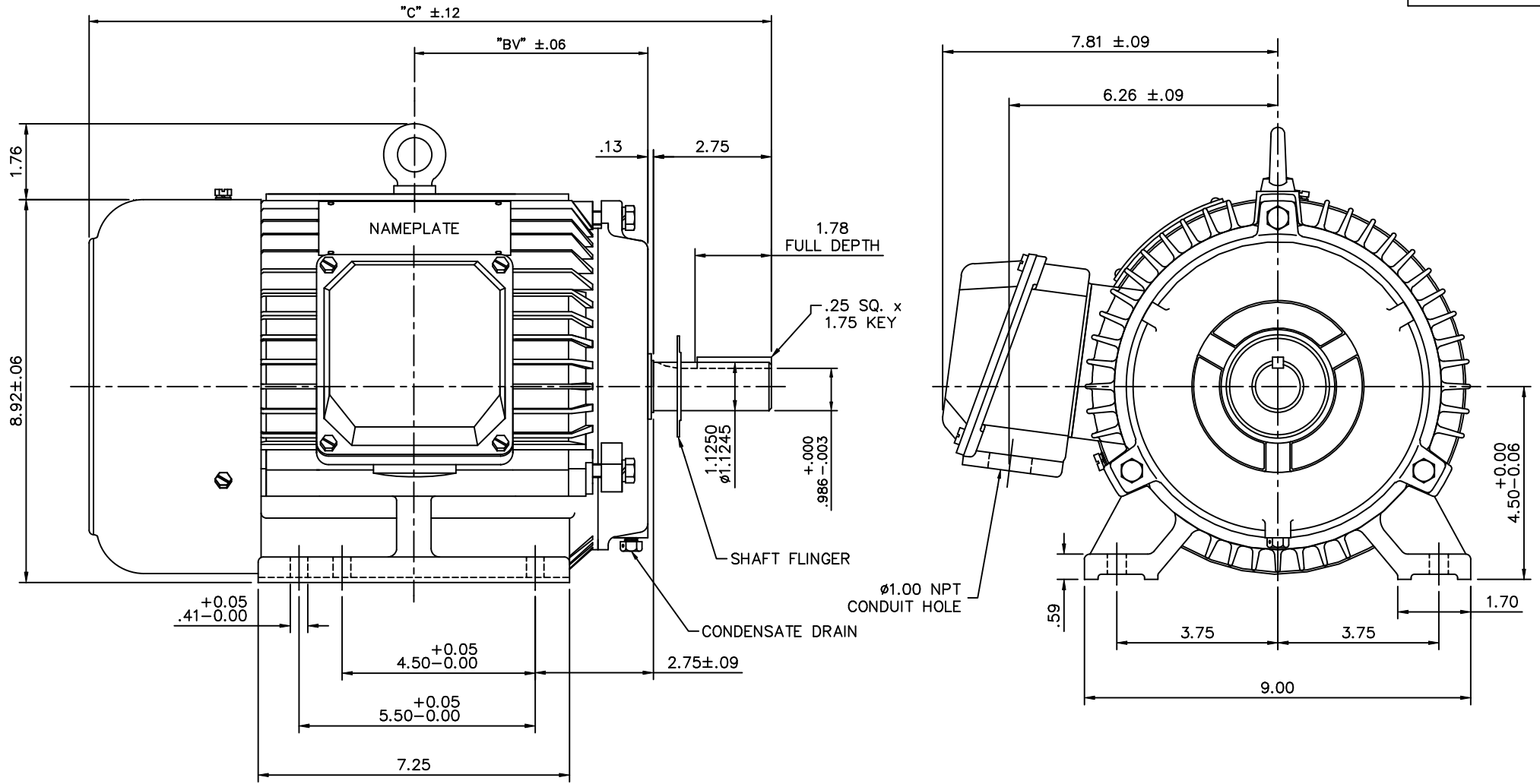
RegalRexnord

Nameplate Specifications

Output HP	5 Hp	Output KW	3.7 kW
Frequency	60 Hz	Voltage	208-230/460 V
Current	13.0-12.0/6.0 A	Speed	3510 rpm
Service Factor	1.15	Phase	3
Efficiency	88.5 %	Power Factor	89.5
Duty	Continuous	Insulation Class	F
Design Code	B	KVA Code	J
Frame	184T	Enclosure	Totally Enclosed Fan Cooled
Thermal Protection	No	Ambient Temperature	40 °C
Drive End Bearing Size	6206	Opp Drive End Bearing Size	6205
UL	Recognized	CSA	Y
CE	Y	IP Code	43
Number of Speeds	1		

Technical Specifications

Electrical Type	Squirrel Cage Induction Run	Starting Method	Across The Line
Poles	2	Rotation	Reversible
Resistance Main	2.32 Ohms	Mounting	Rigid Base
Motor Orientation	Horizontal	Drive End Bearing	Ball
Opp Drive End Bearing	Ball	Frame Material	Cast Iron
Shaft Type	T	Overall Length	16.80 in
Shaft Diameter	1.130 in	Shaft Extension	2.75 in
Assembly/Box Mounting	F1/F2 CAPABLE		
Outline Drawing	16953460ME-184T	Connection Drawing	00501001ME



NOTE: 184T HAS 6 MTG. HOLES, USING BOTH 182T AND 184T "2F" LOCATIONS.

FRAME	"C"	"BV"
182T	16.14	5.38
184T	16.80	5.88

			TOLERANCES UNLESS SPECIFIED		MARATHON ELECTRIC	DRAWN J.J.K. 03/25/99	
			DEC.	INCHES		CHK	
			.X	$\pm .1$		APPD	P.G. 03/31/99
02	REDRAWN TO CURRENT CAD STANDARDS	CJK 11/14/01	.XX	$\pm .03$	TITLE	OUTLINE - 182T & 184T FRAME	SCALE 7-16
01	REDRAWN WITH CURRENT STANDARDS TO CAD	D.R.Z2/15/01	.XXX	$\pm .005$		RIGID - TEFC NEW CON-BOX	REF 169500
NO.	REVISION	BY & DATE	.XXXX	$\pm .0005$	MAT'L	CAST IRON	FMF
			CHK	ANG $\pm 1/2'$	FINISH		PREV
THIS DRAWING IN DESIGN AND DETAIL IS OUR PROPERTY AND MUST NOT BE USED EXCEPT IN CONNECTION WITH OUR WORK ALL RIGHTS OF DESIGN AND INVENTION ARE RESERVED THIS IS AN ELECTRONICALLY GENERATED DOCUMENT - DO NOT SCALE THIS PRINT			RFP		CAD FILE	16953460ME	SIZE B
			DIST				DRAWING NO. 169534-60ME
							REV. 02

ERROR: syntaxerror
OFFENDING COMMAND: --nostringval--

STACK:

/im
-savelevel-

Data Sheet

Date: 12/14/2018

Customer: _____

Attention: _____

Submitted by: FAREEDA DUDEKULA



184TTFC6002

Submittal

Data @ 460 V

Motor Load Data

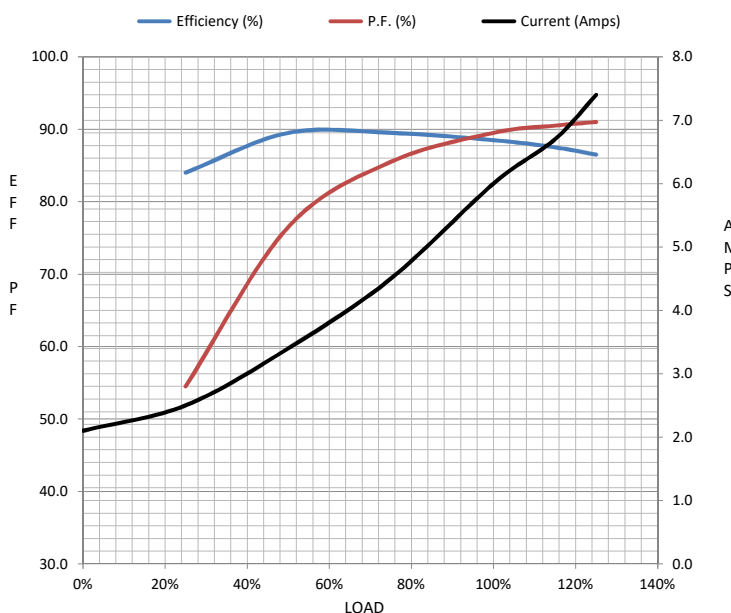
Load	0%	25%	50%	75%	100%	115%	125%	LR	
Current (Amps)	2.10	2.50	3.4	4.5	6.0	6.7	7.4	46.0	
Torque (ft-lb)	0.00	1.80	3.7	5.5	7.5	8.6	9.4	15.3	
RPM	3600	3580	3560	3535	3510	3,495	3480	0	
Efficiency (%)		84.0	89.5	89.5	88.5	87.5	86.5		
P.F. (%)	8.5	54.5	76.5	85.5	89.5	90.5	91.0	55.0	

Motor Speed Data

	LR	Pull-Up	BD	Rated	Idle
Speed (RPM)	0	1800	2955	3510	3600
Current (Amps)	46.0	41.5	29.5	6.0	2.10
Torque (ft-lb)	15.3	17.0	25.0	7.5	0.00

Information Block

HP	5.0			
Sync. RPM	3600			
Frame	184			
Enclosure	TEFC			
Construction	TFS			
Voltage	208-230/460#190/380 V			
Frequency	60 Hz			
Design	B			
LR Code letter	J			
Service Factor	1.15			
Temp Rise @ FL	71 °C			
Duty	CONT			
Ambient	40 °C			
Elevation	1,000 feet			
Rotor/Shaft wk²	0.30 Lb-Ft²			
Ref Wdg	T08702011 NONE			
Sound Pressure @ 1M	72 dBA			
VFD Rating	NONE			
Outline Dwg	169534.60ME			
Conn. Diag	5010.01ME			
Additional Specifications:				
0				
0				
EQUIV CKT (OHMS / PHASE)				
R1	R2	X1	X2	Xm
1.3920	1.1300	4.8110	1.8460	124.9600



Speed -Torque Curve

