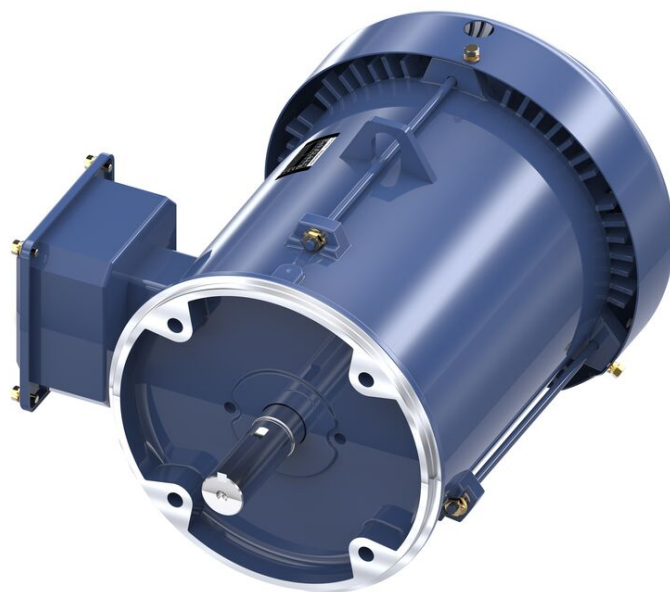


PRODUCT INFORMATION PACKET

Model No: 184TTFBD8029

Catalog No: H1126

Special Voltage Motors, TEFC, 5 HP, 3 Ph, 50 Hz, 220/380/440 V, 1440 RPM, 184TC Frame



Regal and are trademarks of Regal Rexnord Corporation or one of its affiliated companies.
©2022 Regal Rexnord Corporation, All Rights Reserved. MC017097E

Nameplate Specifications

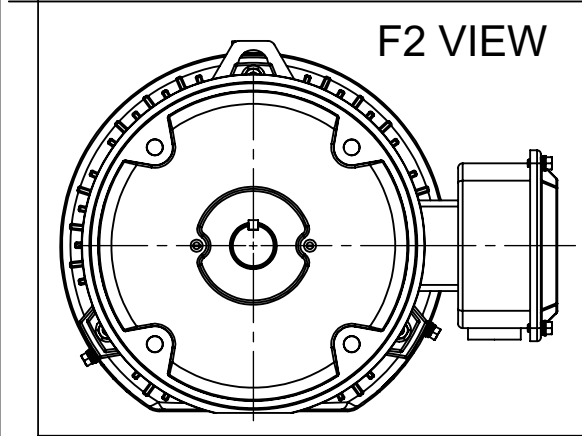
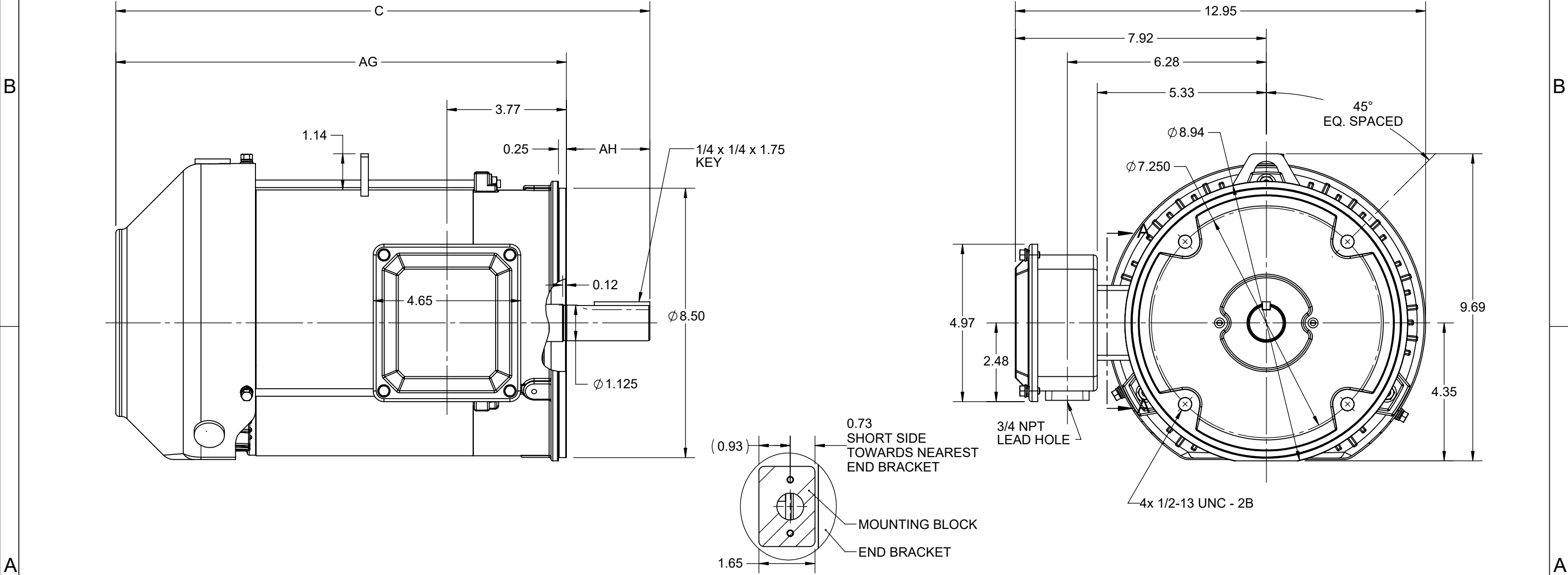
Output HP	5 Hp	Output KW	3.7 kW
Frequency	50 Hz	Voltage	220/380/440 V
Current	13.0/7.5/6.5 A	Speed	1440 rpm
Service Factor	1.15	Phase	3
Efficiency	87.5 %	Power Factor	88.2
Duty	Continuous	Insulation Class	F
Design Code	B	KVA Code	G
Frame	184TC	Enclosure	Totally Enclosed Fan Cooled
Thermal Protection	No Protection	Ambient Temperature	40 °C
Drive End Bearing Size	6206	Opp Drive End Bearing Size	6205
UL	Recognized	CSA	Y
CE	Y	IP Code	55
Number of Speeds	1		

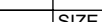
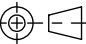
Technical Specifications

Electrical Type	Squirrel Cage Induction Run	Starting Method	Across The Line
Poles	4	Rotation	Reversible
Resistance Main	2.705 Ohms	Mounting	Round
Motor Orientation	Horizontal	Drive End Bearing	Ball
Opp Drive End Bearing	Ball	Frame Material	Rolled Steel
Shaft Type	T	Shaft Diameter	1.125 in
Assembly/Box Mounting	F1/F2 CAPABLE		
Connection Drawing	EE7308AA	Outline Drawing	SS600201-200

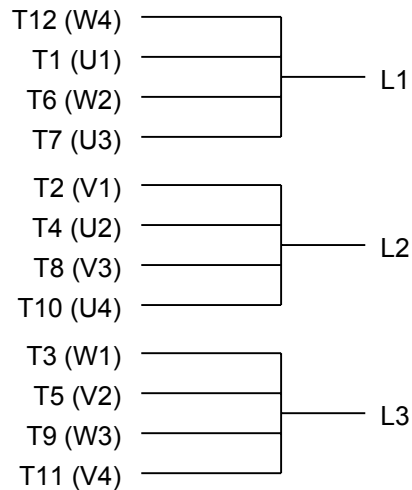
This is an uncontrolled document once printed or downloaded and is subject to change without notice. Date Created:07/18/2022

4						3		2		1	
DASH NO.	C	AG	AH	MOUNTING	FRAME						
100	15.85	13.22	2.62	F1 OR F2	182TC						
200	16.85	14.22			184TC						



DRAWING REVISION D	REVISION BY BISWA	REV DATE/© DATE 16/03/2021	DRAWN BY PRIYA		 Regal Beloit America, Inc.	
ECO CR-0001658	APPROVED BY GNK	DATE 19/03/2021				
ECO DESCRIPTION Unsymmetrical mtg. bracket positional view added.			DATE 08/03/2018		DESCRIPTION OUTLINE	
COPYRIGHT (PER REVISION DATE) REGAL BELOIT AMERICA, INC. ALL RIGHTS RESERVED. PROPRIETARY AND CONFIDENTIAL INFORMATION - THIS DOCUMENT IS THE PROPERTY OF REGAL BELOIT AMERICA, INC. ("OWNER") AND CONTAINS OWNER'S PROPRIETARY INFORMATION. ANY PERSON, CORPORATION OR OTHER FIRM RECEIVING IT IS DEEMED, BY RECEIVING IT, TO AGREE THAT IT, AND/OR ANY PART OF IT, SHALL NOT BE DISCLOSED TO ANY PERSON, CORPORATION OR OTHER ENTITY, DUPLICATED, AND/OR USED, EXCEPT AS EXPRESSLY APPROVED IN WRITING IN ADVANCE BY OWNER. THIS DOCUMENT SHALL BE RETURNED TO OWNER UPON REQUEST. IT MAY BE SUBJECT TO CERTAIN RESTRICTIONS UNDER APPLICABLE EXPORT CONTROL LAWS AND REGULATIONS.			APPROVED BY SBD		182/184TC FR TEFC RS, FOOTLESS	
			DATE 08/03/2018		MATERIAL	
			REFERENCE		PROCESS/FINISH	
			THIRD ANGLE PROJECTION 		SIZE B	
					DRAWING NUMBER SS600201	
					SHEET 1 OF 1	

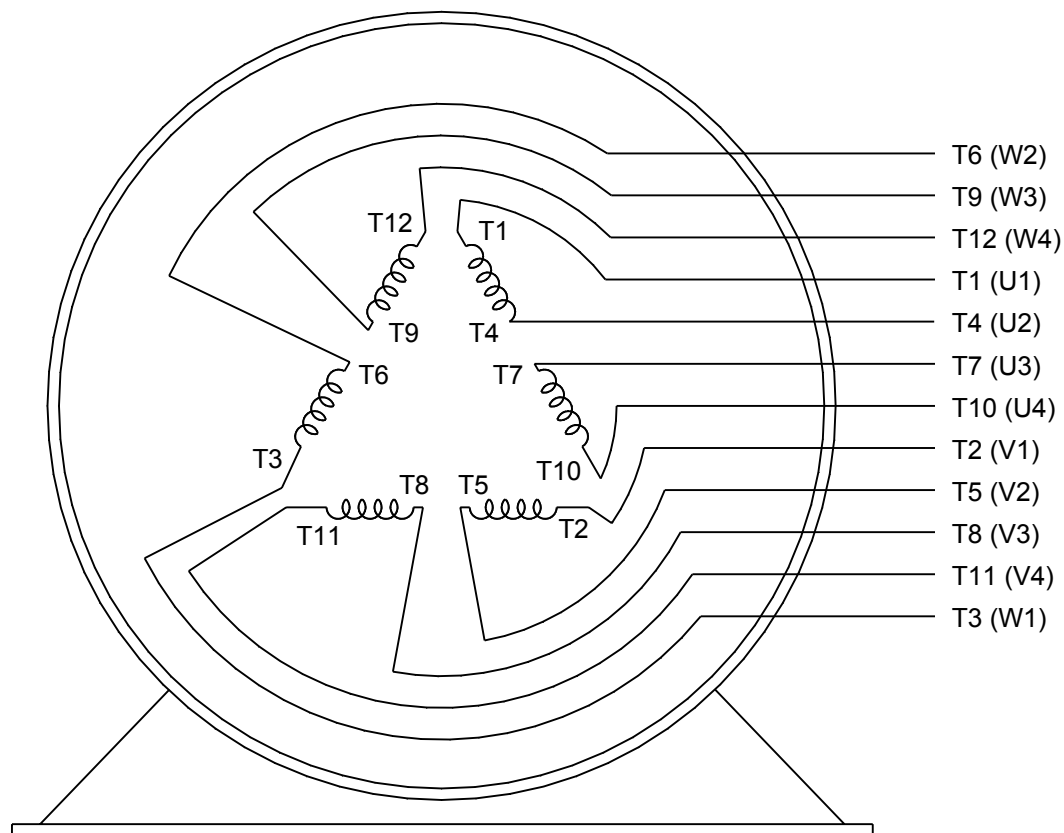
PRIMARY DIMENSIONS ARE INCH
mm DIMENSIONS IN [BRACKETS]
ARE FOR REFERENCE ONLY



LOW VOLTAGE


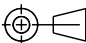


HIGH VOLTAGE



VIEW OF TERMINAL END

DRAWING REVISION K	REVISION BY AJW	DATE 07-17-2015
ECO ECO-0081632	APPROVED BY T. VUE	DATE 07-17-2015
ECO DESCRIPTION REV'D IEC MARKINGS PER IEC 60034-8		
COPYRIGHT REGAL BELOIT AMERICA, INC. ALL RIGHTS RESERVED. PROPRIETARY AND CONFIDENTIAL INFORMATION - THIS DOCUMENT IS THE PROPERTY OF REGAL BELOIT AMERICA, INC. ("OWNER") AND CONTAINS OWNER'S PROPRIETARY INFORMATION. ANY PERSON, CORPORATION OR OTHER FIRM RECEIVING IT IS DEEMED, BY RECEIVING IT, TO AGREE THAT IT, AND/OR ANY PART OF IT, SHALL NOT BE DISCLOSED TO ANY PERSON, CORPORATION OR OTHER ENTITY, DUPLICATED, AND/OR USED, EXCEPT AS EXPRESSLY APPROVED IN WRITING IN ADVANCE BY OWNER. THIS DOCUMENT SHALL BE RETURNED TO OWNER UPON REQUEST. IT MAY BE SUBJECT TO CERTAIN RESTRICTIONS UNDER APPLICABLE EXPORT CONTROL LAWS AND REGULATIONS.		

DRAWN BY LZ	 Regal Beloit America, Inc.	
DATE 01-12-1994		
APPROVED BY GK	DESCRIPTION CONN DIAGRAM-EXTERNAL	
DATE 01-14-1994	3Ø-2/1 DELTA-12 LEADS	
REFERENCE	MATERIAL	PROCESS/FINISH
THIRD ANGLE PROJECTION 	SIZE A	DRAWING NUMBER EE7308AA
		SHEET 1 OF 1



P.O. BOX 8003
WAUSAU, WI 54401-8003
PH. 715-675-3311

DATA VOLTS: 440

CERTIFICATION DATA SHEET

CUSTOMER:**ORDER #:****CONN. DIAGRAM:****OUTLINE:****WINDING:****SPEED:**

EE7308AA

SS600201-200

HA31124040

NONE

2

CUSTOMER P.O. #:**REFERENCE MODEL #:****CAT #:****CUSTOMER PART #:****MOUNTING:**

184TTFB08029

H1126

F1/F2 CAPABLE

TYPICAL MOTOR PERFORMANCE DATA

HP	KW	SYNC RPM	FL RPM	FRAME	ENCLOSURE	TYPE	KVA CODE	DESIGN
5	3.7	1500	1440	184TC	TEFC	TFB	G	B

PH	HZ	VOLTS	AMPS	START TYPE	DUTY	INSL	S.F.	AMB	ELEV.
3	50	220/380/440	13/7.5/6.5	ACROSS THE LINE	CONT	F	1.15	40	3300

F.L. EFF	87.5	3/4 LD EFF	90.0	1/2 LD EFF	91.0	GTD EFF	ELECT. TYPE
F.L. PF	88.2	3/4 LD PF	87.2	1/2 LD PF	81.8	87.0	SQ CAGE IND RUN

F.L. TORQUE	LR AMPS @ 460 V	L.R. TORQUE	B.D. TORQUE	F.L. RISE (° C)
18.5 LB-FT	38.9	35.0 LB-FT	40.0 LB-FT	60

SOUND PRESSURE @ 3 FT.	SOUND	POWER	ROTOR WK ²	MAX. LOAD WK ²	SAFE STALL TIME	STARTS/HOUR	APPROX.	MOTOR WGT
0 dBA	9 dBA		0.389 LB-FT ²	0 LB-FT ²	0 SEC.	0	0	LB.

*** SUPPLEMENTAL INFORMATION ***

DE BRACKET TYPE	ODE BRACKET TYPE	MOUNT TYPE	MOTOR ORIENTATION	SEVERE DUTY	HAZARDOUS LOCATION	DRIP COVER	SCREENS	PAINT
C-FACE	STANDARD	ROUND	HORIZONTAL	NO	NONE	YES	NONE	BLUE (ENAMEL)

BEARINGS	GREASE	SHAFT TYPE	SPECIAL DE	SPECIAL ODE	SHAFT	MATERIAL	FRAME MATERIAL
DE ODE							
BALL BALL	POLYREX EM	T	NONE	NONE	1045 HOT ROLLED (C-204)		ROLLED STEEL
6206 6205							

THERMOSTATS	PROTECTORS	WDG RTD's	BRG RTD's	THERMISTORS	CONTROL	SPACE	HEATERS
NONE	NOT	NONE	NONE	NONE	FALSE		NA

R1 (ohms/ph)	R2 (ohms/ph)	X1 (ohms/ph)	X2 (ohms/ph)	Xm (ohms/ph)	VIBRATION (in/sec)	FLOAT
3.062204986	2.017783934	6.680808864	0.807113573	199.0902493	0.150	ODE

* N O T E s *					INVERTER TORQUE: NONE
					INV. HP SPEED RANGE: NONE
					ENCODER: NONE
					NONE
					NONE PPR

PREPARED BY: CHANDANA DESU	BRAKE: NONE
DATE: 6/20/2022	NONE NONE
	FT-LB: NA
	VOLTAGE: NONE
	HZ:
FORM: 3531 REV_4 2/27/06	UL: V - LIME-INS.CONST UL REC