

PRODUCT INFORMATION PACKET



Model No: 184TTFB4026

Catalog No: E954

Other Purpose Motor, 5 & 3 HP, 3 Ph, 60 & 50 Hz, 208-230/460 & 190/380 V, 1800 & 1500 RPM,
184T Frame, TEFC

Regal and Marathon are trademarks of Regal Rexnord Corporation or one of its affiliated companies.

©2023 Regal Rexnord Corporation, All Rights Reserved. MC017097E



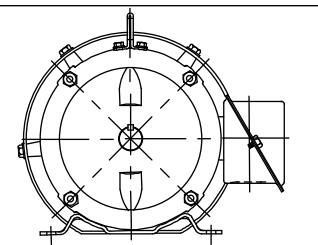
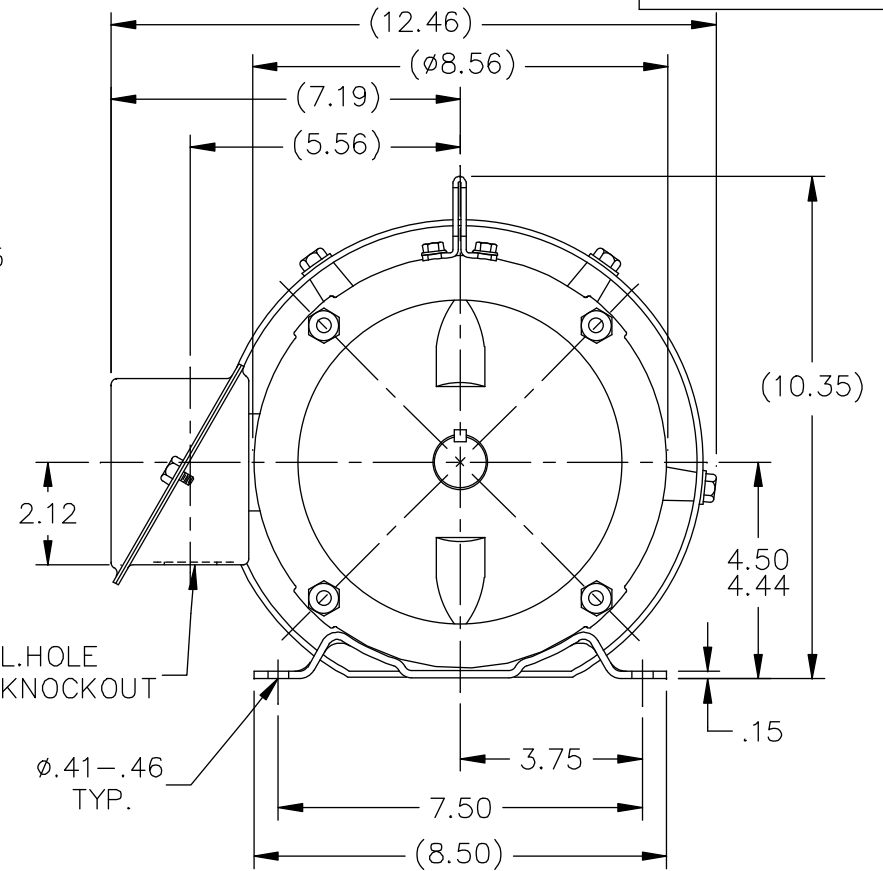
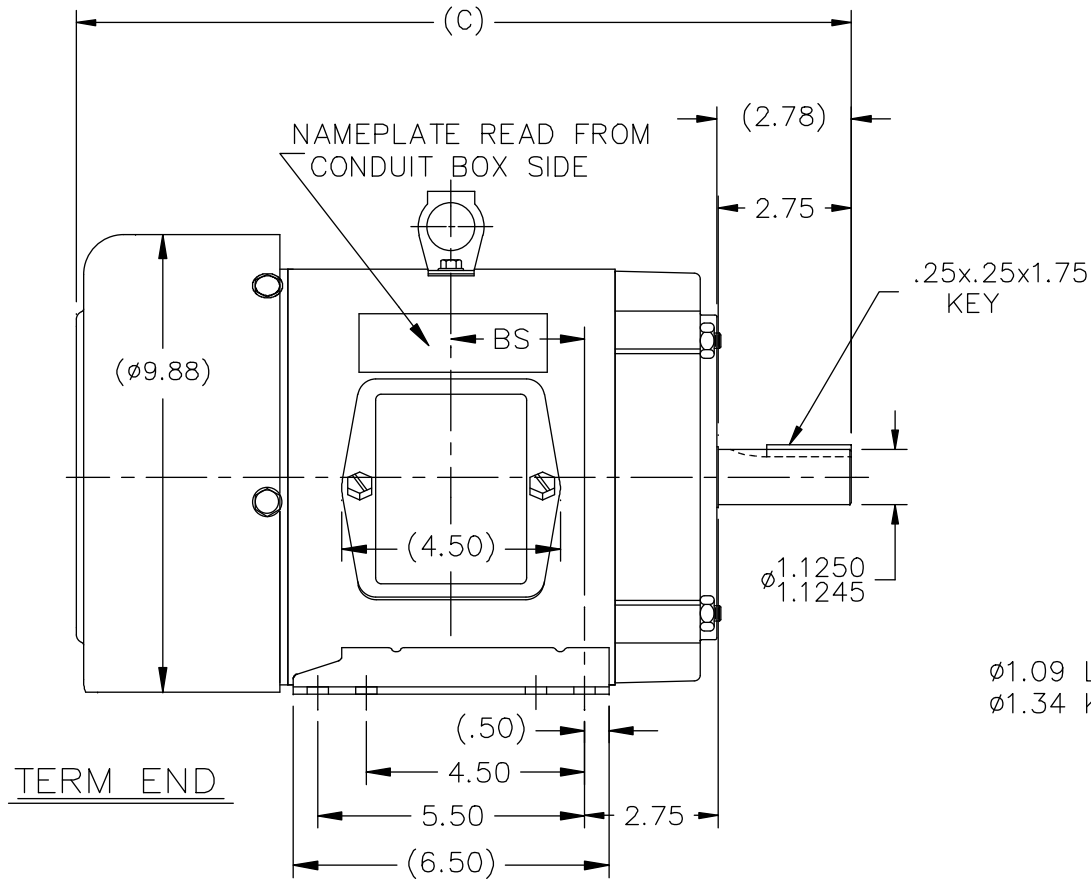
Nameplate Specifications

Phase	3	Output HP	5 & 3 Hp
Output KW	3.7 & 2.2 kW	Voltage	208-230/460 & 190/380 V
Speed	1750 & 1470 rpm	Service Factor	1.15 & 1.15
Frame	184T	Enclosure	Totally Enclosed Fan Cooled
Thermal Protection	No Protection	Efficiency	87.5 & 88.5 %
Ambient Temperature	40 °C	Frequency	60 & 50 Hz
Current	14.2-13/6.5 & 10/5 A	Power Factor	82.5
Duty	Continuous	Insulation Class	F
Design Code	B	KVA Code	J
Drive End Bearing Size	6206	Opp Drive End Bearing Size	6205
UL	Recognized	CSA	Y
CE	Y	IP Code	43
Number of Speeds	1		

Technical Specifications

Electrical Type	Squirrel Cage Induction Run	Starting Method	Across The Line
Poles	4	Rotation	Reversible
Resistance Main	2.5 Ohms	Mounting	Rigid Base
Motor Orientation	Horizontal	Drive End Bearing	Ball
Opp Drive End Bearing	Ball	Frame Material	Rolled Steel
Shaft Type	T	Overall Length	15.97 in
Frame Length	6.75 in	Shaft Diameter	1.125 in
Shaft Extension	2.75 in	Assembly/Box Mounting	F1 ONLY
Outline Drawing	A-SS65651-675	Connection Drawing	A-EE7308

SS65651



F2 VIEW (WHEN APPLICABLE)

NOTES

1. CONDUIT BOX CAN BE ROTATED IN 90° STEPS.
2. CONDUIT BOX CAN BE MOUNTED ON OPPOSITE SIDE BY REMOVING BRACKETS AND TURNING FRAME 180°.

DASH	FR.	C	BS	MOUNTING
575	182T	14.97	2.25	F1 OR F2
625	182/4T	15.47	2.50	F1 OR F2
675	182/4T	15.97	2.75	F1 OR F2
725	182/4T	16.47	3.00	F1 ONLY
775	182/4T	16.97	3.25	F1 ONLY
825	182/4T	17.47	3.50	F1 ONLY

NO.	REVISION	BY & DATE	CHK	ANG	±7'30"
11	REMOVED "TS" FROM TITLE BLOCK	TAT 06-15-2006	ML	TOLERANCES UNLESS SPECIFIED	
10	ADDED NEW LIFT LUG CN 32420	ERH 09-24-2003	ML	DEC.	INCHES
9	ADDED LIFT LUG CN 34025	DRS 06-21-2001		.X	±.1
8	REVISED MOUNTING CN 27400-320	BJW 11-12-1999		.XX	±.03
7	ADDED MOUNTING TO DASH TABLE	MRB 10-17-1998		.XXX	±.005
6	RE-ISSUE ADDED (7.19) DIMENSION.	MH 01-29-1998		.XXXX	±.0005



TITLE OUTLINE
180T FR. - BB - TEFC

MAT'L.

FINISH

DRAWN	DJK	04-16-1993
CHK	ML	07-20-1993
APPD	GK	07-20-1993
SCALE	1=4	
REF		
FMF		
PREV		

THIS DRAWING IN DESIGN AND DETAIL IS OUR PROPERTY AND MUST NOT BE USED EXCEPT IN CONNECTION WITH OUR WORK ALL RIGHTS OF DESIGN AND INVENTION ARE RESERVED THIS IS AN ELECTRONICALLY GENERATED DOCUMENT - DO NOT SCALE THIS PRINT

RFP
DIST LB

CAD FILE ss65651

SIZE
A

DRAWING NO. PAGE OF
SS65651 11



NO.	REVISION	BY & DATE	CHK	ANG	TOLERANCES UNLESS SPECIFIED		DRAWN RM	11/20/1990
					DEC.	INCHES		
5	CHG TO REGAL LOGO	SL 09/10/2015	AB				CHK	ML 11/21/1990
4	REVISED IEC NOTATIONS	MSG 11/15/2011	CMN	.X	±.1		APPD	SAS 04/24/2003
3	ADDED IEC NOTATIONS... (U1), (V1) ETC. MU95194	MSG 5/10/2010	MJS	.XX	±.02		SCALE	1=1
2	ADDED THE OPTIONAL CORD CONNECTION MU46318	RDH 04/24/2003	DRS	.XXX	±.005		REF	
1	REDRAWN	RM 11/20/1990		.XXXX	±.0005		FMF	
					±7'30"		PREV	
THIS DRAWING IN DESIGN AND DETAIL IS OUR PROPERTY AND MUST NOT BE USED EXCEPT IN CONNECTION WITH OUR WORK ALL RIGHTS OF DESIGN AND INVENTION ARE RESERVED THIS IS AN ELECTRONICALLY GENERATED DOCUMENT - DO NOT SCALE THIS PRINT					RFP	CAD FILE ee7308	SIZE	DRAWING NO. PAGE OF REV.
					DIST WP		A	EE7308 5