

PRODUCT INFORMATION PACKET

marathon®
Motors

Model No: 184TTDW8329

Catalog No: C124A

General Purpose Motor, 5 & 3 HP, 3 Ph, 60 & 50 Hz, 208-230/460 & 190/380 V, 1800 & 1500 RPM,
184TC Frame, DP

Regal and Marathon are trademarks of Regal Rexnord Corporation or one of its affiliated companies.

©2023 Regal Rexnord Corporation, All Rights Reserved. MC017097E

RegalRexnord

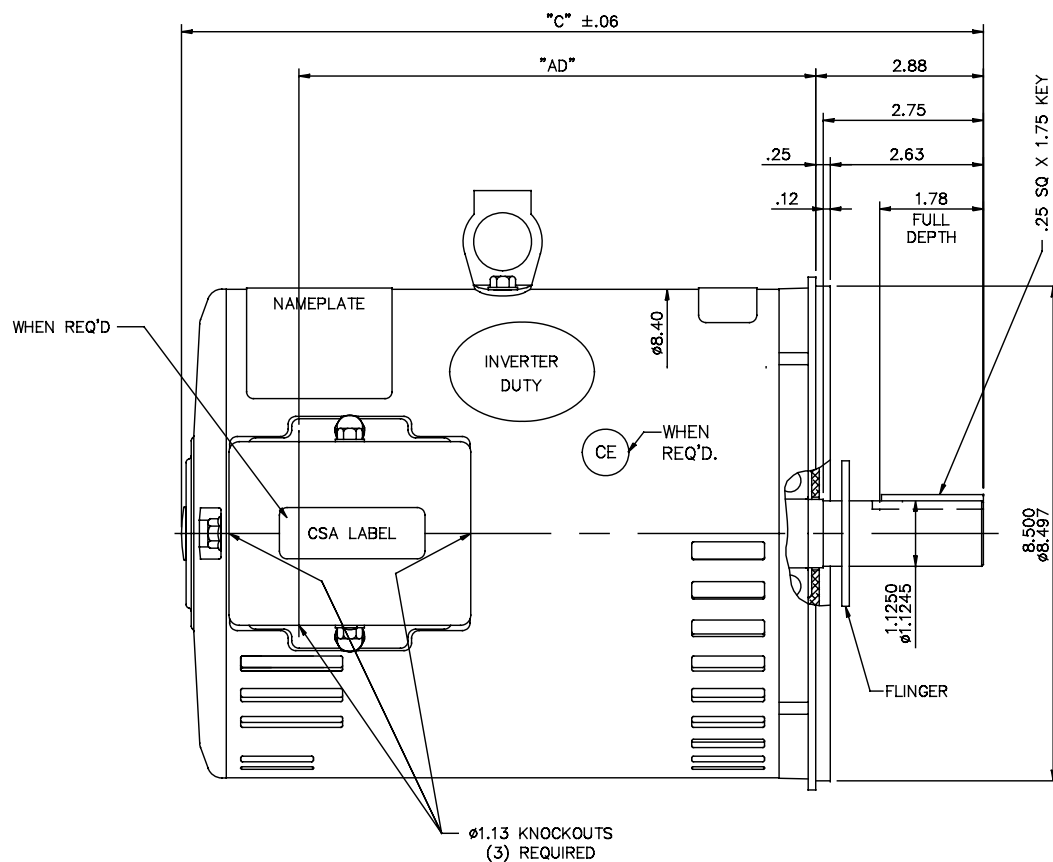
Nameplate Specifications

Phase	3	Output HP	5 & 3 Hp
Output KW	3.7 & 2.2 kW	Voltage	208-230/460 & 190/380 V
Speed	1755 & 1475 rpm	Service Factor	1.15 & 1.15
Frame	184TC	Enclosure	Drip Proof
Thermal Protection	No Protection	Efficiency	87.5 & 88.3 %
Ambient Temperature	40 °C	Frequency	60 & 50 Hz
Current	14.6-13.2/6.6 & 10.4/5.2 A	Power Factor	81.1
Duty	Continuous	Insulation Class	F
Design Code	B	KVA Code	J
Drive End Bearing Size	6206	Opp Drive End Bearing Size	6205
UL	Recognized	CSA	Y
CE	Y	IP Code	12
Number of Speeds	1		

Technical Specifications

Electrical Type	Squirrel Cage Induction Run	Starting Method	Across The Line
Poles	4	Rotation	Reversible
Resistance Main	3.17 Ohms	Mounting	Round
Motor Orientation	Horizontal	Drive End Bearing	Ball
Opp Drive End Bearing	Ball	Frame Material	Rolled Steel
Shaft Type	T	Overall Length	13.28 in
Frame Length	9.00 in	Shaft Diameter	1.125 in
Shaft Extension	2.88 in	Assembly/Box Mounting	F1 ONLY
Connection Drawing	005010.01ME	Outline Drawing	035607-900

035607



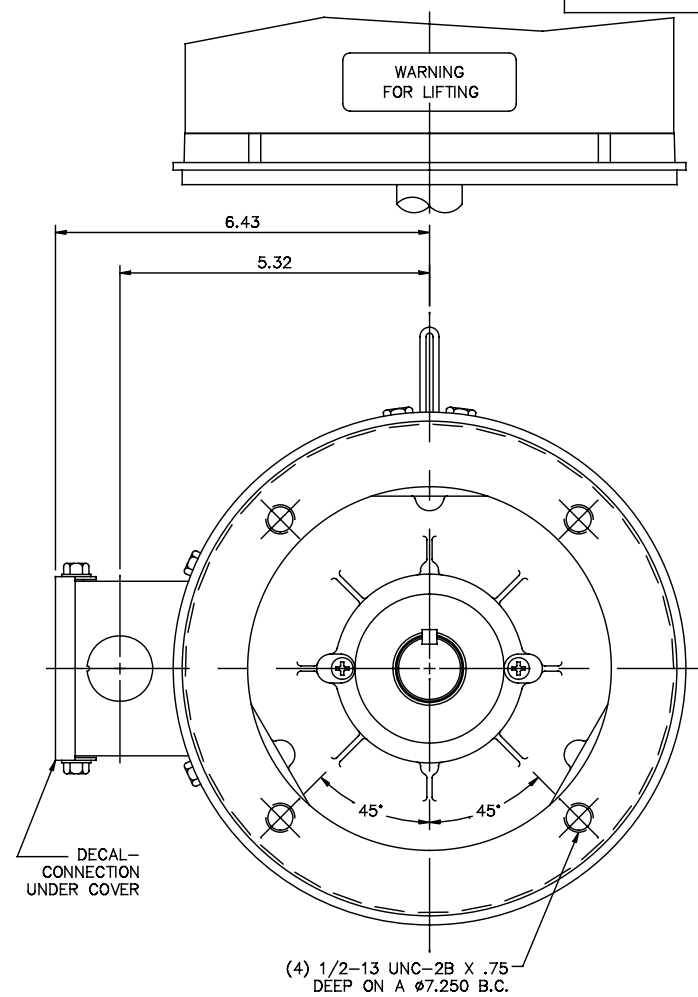
GASKETS THROUGHOUT

MAXIMUM FACE RUNOUT TO BE .004 T.I.R.
MAXIMUM PILOT ECCENTRICITY TO BE .004 T.I.R.
PERMISSIBLE SHAFT RUNOUT TO BE .002 T.I.R.

DASH NO.	"C"	"AD"
800	12.28	7.38
850	12.78	7.88
900	13.28	8.38
950	13.78	8.88
1000	14.28	9.38
1050	14.78	9.88
1100	15.28	10.38
1150	15.78	10.88

NO.	REVISION	BY & DATE
02	CSA LABEL ADDED	PVR 06/24/15
01	ADDED -800 LENGTH PER ISSAC09-3353	SSK 8/17/2009

THIS DRAWING IN DESIGN AND DETAIL IS OUR PROPERTY AND MUST NOT BE USED EXCEPT IN CONNECTION WITH OUR WORK. ALL RIGHTS OF DESIGN AND INVENTION ARE RESERVED. THIS IS AN ELECTRONICALLY GENERATED DOCUMENT - DO NOT SCALE THIS PRINT

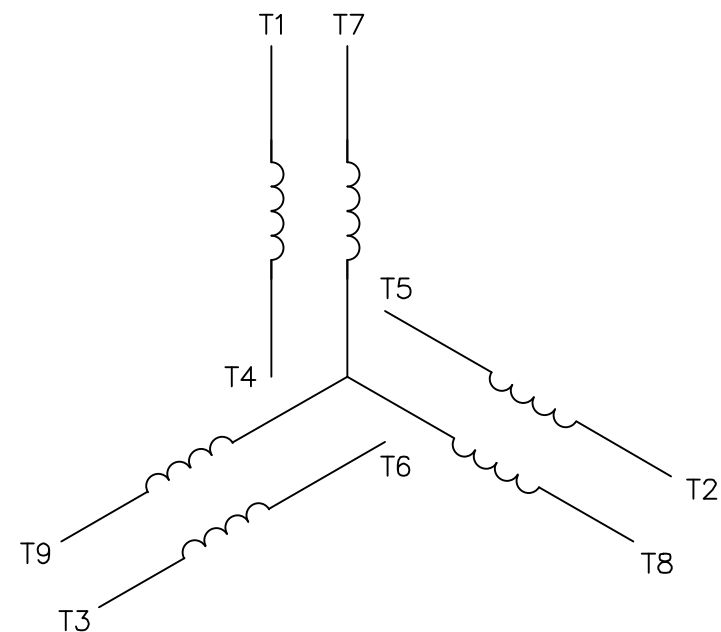
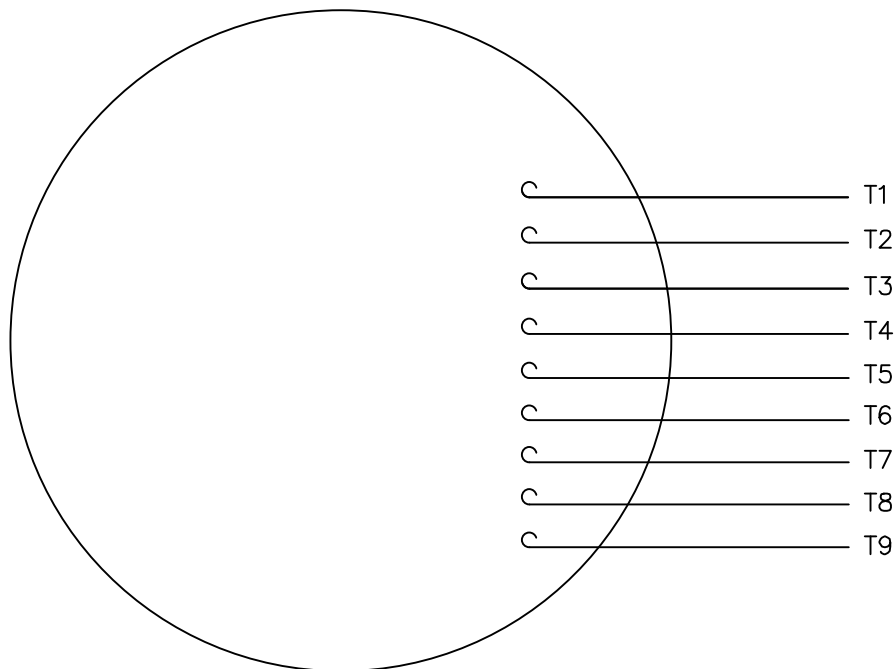


TITLES OUTLINE - 180TC FRAME
DRIP PROOF - "C" FACE


TOLERANCES UNLESS SPECIFIED	DEC.	INCHES
.X	±.1	
.XX	±.03	
.XXX	±.005	
.XXXX	±.0005	
CHK	ANG	±1/2"
RFP		
DIST	NLV	

DRAWN KVN 01/02/2007	CHK	APPD
SCALE 1=2	REF 035603	FMF 182TIDW8067
PREV		
CAD FILE 035607	SIZE B	DRAWING NO. 035607
REV. 02		

VIEW FROM OUTSIDE OF MOTOR AT SWITCH END.



VOLTAGE	L1	L2	L3	JOIN & INSULATE
HIGH	T1	T2	T3	(T4,T7) (T5,T8) (T6,T9)
LOW	T1,T7	T2,T8	T3,T9	T4,T5,T6

				TOLERANCES UNLESS SPECIFIED				DRAWN RDW 04/12/02		
				DEC.	INCHES			CHK		
				.X	±.1			APPD		
				.XX	±.01	TITLE EXTERNAL WIRING DIAGRAM 3 PHASE W/O PROTECTOR		SCALE	1=1	
				.XXX	±.005			REF	FIG.2—51	
				.XXXX	±.0005	MAT'L. DECAL — 004014		FMF		
NO.	REVISION	BY & DATE	CHK	ANG	±1/2*	FINISH		PREV		
THIS DRAWING IN DESIGN AND DETAIL IS OUR PROPERTY AND MUST NOT BE USED EXCEPT IN CONNECTION WITH OUR WORK ALL RIGHTS OF DESIGN AND INVENTION ARE RESERVED THIS IS AN ELECTRONICALLY GENERATED DOCUMENT — DO NOT SCALE THIS PRINT			RFP	04/12/02		CAD FILE 00501001ME		SIZE	DRAWING NO.	REV.
			DIST				A	005010—01ME		